

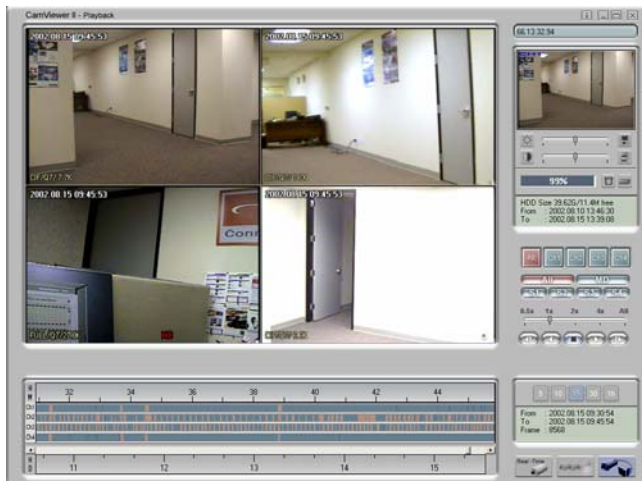
# i-Rec B104

“Stand alone 4-Channel Network DVR”



## The world most reliable Network DVR

<i-Rec CamViewer>



The B104 has built-in networking board, digital image compression, and recording function. B104 is also equipped with quad split and removable HDD rack. B104 is the most reliable network DVR in the World.

In as little as ten minutes, B104 can be installed with your existing CCTV cameras and begin recording. B104 uses the most advanced image compression technology to provide TV quality video over local networks or the Internet as well as record it on internal HDD. The external BNC ports and terminal blocks allow B104 to be easily integrated into existing analog systems. The Wavelet compression technology processes analog video into crisp, court-admissible pictures that are up to 300% smaller than comparable JPEG images.

Any desktop hard drive may be used for the internal HDD.

< Playback, Monitoring, Configuration Programs >



<Rear View>

- HDD Brand: Maxtor, IBM and Fujitsu are recommended
- HDD RPM: 7200 RPM is required to secure 30frames per second recording-speed.

# i-Rec B104

*“Perfect Security Guard”*

## Specifications

<b>Hardware</b> 32bit RISC Embedded processor Flash memory: 8Mbyte RAM: 16Mbyte OS: Embedded Linux	<b>Alarms and I/O</b> Software-controlled four alarms inputs Software-controlled four alarms outputs
<b>Storage Device</b> Removable HDD Rack (Any Desktop HDD is compatible)	<b>MISC. function</b> High Quality Image Area Setting Image Quality Control (10 Levels) Off-line recording Remote data back-up Self-contained file system
<b>Image Resolution Control</b> 720X486, 720X243, 360X243, 180X121, 90X60	Configurable recording conditions (time, sensor, recording speed.....) Schedule recording
<b>Image Compression</b> Compression Algorithm: Wavelet Compression Rate: 10:1 ~200:1	<b>Simultaneous User Support</b> Monitoring: Max. 5 persons. Playback and Administration: 1 person
<b>Performance</b> (on 360X243) Transfer Rate: Max up to 30fps(NTSC) / 25fps(PAL)	<b>Power Supply (included)</b> Input: AC 100~240V, 50~60 Hz, 0.3A Output: DC 12V, 1.5A
<b>Video Channel</b> NTSC or PAL video format are supported 4Ch. External Video Input (BNC Connector)	<b>CamViewer System Requirements</b> Processor: Pentium II 266 and above (Pentium III 500 recommended) Ram: 64 MB and above OS: Windows 98/Me/2000/XP/NT
<b>Management and Software Upgrades</b> Remote System Configuration via Network Software Upgrades via Network	<b>Network</b> Protocol: TCP/IP, ARP, RARP, ICMP, DHCP, PPPoE Line: 10-Base T Ethernet (RJ-45)
<b>Security</b> Password (Based User or Administration Authentication) IP-filtering (Secure Mode) Image Encryption	<b>PTZ control</b> RS232, RS485/RS422 Multiple PTZ devices are supported via RS422/RS485

## Application Service

**i-Rec Registration Service**  
Service that helps User find Dynamic IP easily at Dynamic IP Registration Server when i-Rec is connected on xDSL or Cable Modem

**i-Rec Naming Service**  
Service that endows i-Rec with Domain Name and maps between IP Address and Domain Name

## Ideal For

- Integration into larger systems
- Monitoring Point of Sales areas
- Convert operations
- Small 4 channel retail settings
- Warehouse / Industrial yards
- Home / School / Day care centers

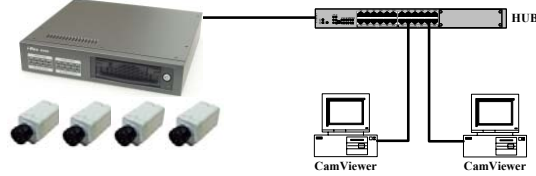
## Key Features

- Monitoring recorded and live images over Network
- Various configurable recording conditions (time, sensor, recording speed.....)
- Removable HDD rack (Compatible with any existing desktop HDD)
- Various configurable monitoring conditions
- 4 channel Support
- 4 sensors input
- 4 alarm output
- S/W Motion Detection
- Recording and Playback images at the same time
- Schedule recording
- Max. recording rate: 30fps at single channel mode, 4fps / 4Ch
- RS 232 and RS 485/RS422 Port Support for PTZ Control
- Easy setting
- Dynamic IP (DHCP, Floating IP) support (when you use xDSL and Cable Modem)
- Wavelet Compression (30-300% greater efficiency than JPEG) for Higher Refresh Rate and Crisper Images.
- Embedded Linux OS For Excellent Stability and Less Downtime

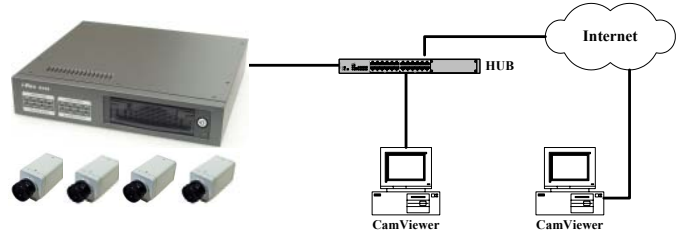
-- “Specifications are subject change without notice” --

## Network Configuration Diagram

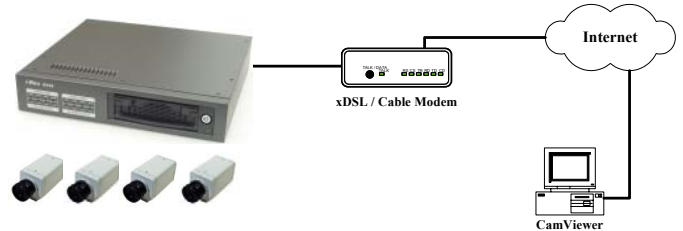
### 1. Connection on LAN



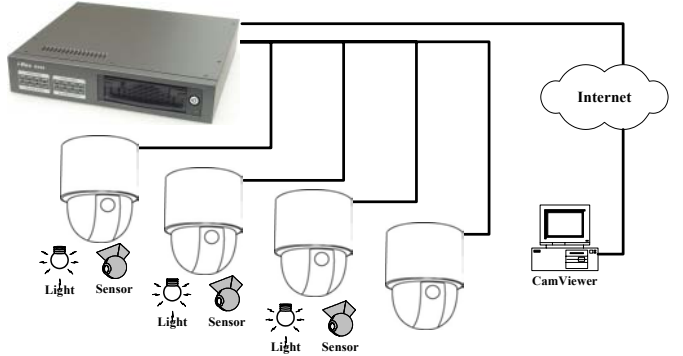
### 2. Connection on Internet dedicated line



### 3. Connection on xDSL / Cable Modem line



### 4. Connection with external devices



## Distributed by:

## WebGate USA.

465 Halstead St., Suite #110  
Pasadena, CA 91107, USA

Tel: 1-626-351-6500  
Fax: 1-626-351-3660

## WebGate Inc.

4F, Pika Bldg., 894-20, Hokye  
2-dong, Dongan-gu, Anyang-si,  
Kyunggi-do, Korea (431-836)

Tel: 82-31-455-3555  
Fax: 82-31-455-3955  
[Sales@webgateinc.com](mailto:Sales@webgateinc.com)  
[Http://www.webgateinc.com](http://www.webgateinc.com)