



IB8156

Ultra-mini Bullet Network Camera

1.3MP · 30 fps · Ultra-Mini Size · Easy Installation

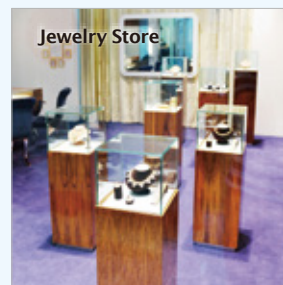
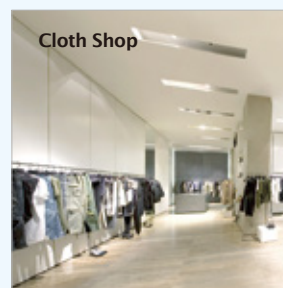
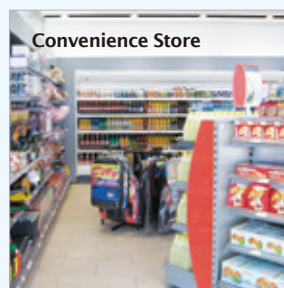
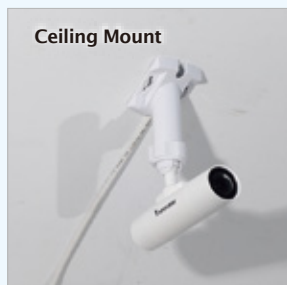
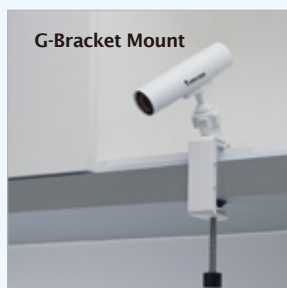
VIVOTEK IB8156 is an ultra-mini bullet network camera, specially designed for indoor applications in which camera appearance is cared, such as luxury stores, antique stores and cloth shops.

The IB8156 is equipped with a 1.3-megapixel sensor and the ability to output 30 frames per second in H.264 compression. It includes multiple streams with different settings and applications, such as recording or live viewing.

Users can also benefit from simple installation with the compact housing and standard PoE power input design, as well as a MicroSD card slot for local storage.

Key Features

- 1.3-Megapixel CMOS Sensor
- 30 fps @ 1280x1024
- Real-time H.264, MJPEG Compression (Dual Codec)
- Built-in IEEE 802.3af Compliant PoE
- Built-in MicroSD/SDHC/SDXC Card Slot for On-board Storage
- Ultra-mini Size Design
- Flexible Installation Options: Ceiling, Wall and G-bracket Mount
- Easy Installation



Technical Specifications

Model	IB8156-C (Cable Management) IB8156-G (G Bracket)	Intelligent Video	Video Motion Detection	Triple-window video motion detection								
System Information		Alarm and Event										
CPU	Multimedia SoC (System-on-Chip)	Alarm Triggers	Video motion detection, manual trigger, digital input, periodical trigger, system boot, recording notification, camera tampering detection									
Flash	16MB	Alarm Events	Event notification using digital output, HTTP, SMTP, FTP and NAS server File upload via HTTP, SMTP, FTP and NAS server									
RAM	256MB	General										
Camera Features		Connectors	RJ-45 for Network/PoE connection									
Image Sensor	1/3" Progressive CMOS	LED Indicator	System power and status indicator									
Maximum Resolution	1280x1024	Power Input	IEEE 802.3af PoE Class 1									
Lens Type	Fixed-focal	Power Consumption	Max. 2.3 W									
Focal Length	f = 3.6 mm	Dimensions	Ø: 32 mm x 117 mm (w/o bracket)									
Aperture	F 1.8	Weight	Net: 83 g (Body Only) 108 g (IB8156-C) 178 g (IB8156-G)									
Field of View	77° (horizontal) 61° (vertical) 101° (diagonal)	Safety Certifications	CE, LVD, FCC Class B, VCCI, C-Tick									
Shutter Time	1/5 sec. to 1/32,000 sec	Operating Temperature	Starting Temperature: -10°C ~ 40°C (14°F~ 104°F) Working Temperature: -20°C ~ 40°C (-4°F~ 104°F)									
Minimum Illumination	0.2 Lux @ F1.8	Warranty	24 months									
On-board Storage	MicroSD/SDHC/SDXC card slot	System Requirements										
Video		Operating System	Microsoft Windows 7/Vista/XP/2000									
Compression	H.264 & MJPEG	Web Browser	Mozilla Firefox 7~10 (streaming only) Internet Explorer 7.x, 8.x, 9.x, 10.x									
Maximum Frame Rate	30 fps @ 1280x1024 In both compression	Other Players	VLC: 1.1.11 or above QuickTime: 7 or above									
Maximum Streams	3 simultaneous streams	Included Accessories										
S/N Ratio	Above 53 dB	Others	Quick installation guide, warranty card, alignment sticker, ceiling mount bracket, wall-mount bracket									
Video Streaming	Adjustable resolution, quality and bitrate Configurable video cropping for bandwidth saving	Dimensions										
Image Settings	Adjustable image size, quality and bit rate Time stamp, text overlay, flip & mirror Configurable brightness, contrast, saturation, sharpness, white balance, exposure control, gain, backlight compensation, privacy masks Scheduled profile settings											
Network		<table border="1"> <tr> <td>Users</td> <td>Live viewing for up to 10 clients</td> </tr> <tr> <td>Protocols</td> <td>IPv4, IPv6, TCP/IP, HTTP, HTTPS, UPnP, RTSP/RTP/RTCP, IGMP, SMTP, FTP, DHCP, NTP, DNS, DDNS, PPPoE, CoS, QoS, SNMP, 802.1X, UDP, ICMP</td> </tr> <tr> <td>Interface</td> <td>10Base-T/100 BaseTX Ethernet (RJ-45)</td> </tr> <tr> <td>ONVIF</td> <td>Supported, specification available at www.onvif.org</td> </tr> </table>			Users	Live viewing for up to 10 clients	Protocols	IPv4, IPv6, TCP/IP, HTTP, HTTPS, UPnP, RTSP/RTP/RTCP, IGMP, SMTP, FTP, DHCP, NTP, DNS, DDNS, PPPoE, CoS, QoS, SNMP, 802.1X, UDP, ICMP	Interface	10Base-T/100 BaseTX Ethernet (RJ-45)	ONVIF	Supported, specification available at www.onvif.org
Users	Live viewing for up to 10 clients											
Protocols	IPv4, IPv6, TCP/IP, HTTP, HTTPS, UPnP, RTSP/RTP/RTCP, IGMP, SMTP, FTP, DHCP, NTP, DNS, DDNS, PPPoE, CoS, QoS, SNMP, 802.1X, UDP, ICMP											
Interface	10Base-T/100 BaseTX Ethernet (RJ-45)											
ONVIF	Supported, specification available at www.onvif.org											

Compatible Accessories

PoE Kits



POE-IJ-1748NDN
802.3af Compliant PoE Injector



AW-FED-0500
4-port Unmanaged PoE Switch

All specifications are subject to change without notice. Copyright © VIVOTEK INC. All rights reserved.

Distributed by:



VIVOTEK INC.
6F, No.192, Lien-Cheng Rd., Chung-Ho,
New Taipei City, 235, Taiwan, R.O.C.
T: +886-2-82455282 F: +886-2-82455532
E: sales@vivotek.com

VIVOTEK USA
2050 Ringwood Avenue,
San Jose, CA 95131
T: 408-773-8686 F: 408-773-8298
E: salesusa@vivotek.com

VIVOTEK Europe
Randstad 22-133, 1316BW Almere,
The Netherlands
T: +31(0)36-5298-434
E: sales europe@vivotek.com

Ver 1.3