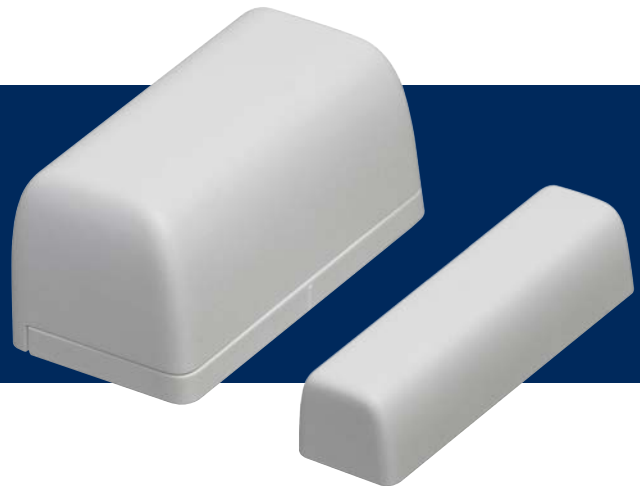


MCT-370

ZigBee Long Range Wireless Magnetic Door/ Window Sensor



Features that Make a Difference:

- Ideal for protecting doors and windows
- Fits any window/door type and décor
- Best for large magnetic gap applications
- Prolonged battery life of 5.9 years (with typical use)
- ZigBee HA 1.2 and OTA support
- Temperature sensing
- Back cover tamper protection
- Easy installation and maintenance
 - Easy to install and remove
 - Low-battery alert
 - Simple user battery replacement process

The majority of home and business owners, according to polling, see smart home capabilities as an extension of their safety. That's why millions choose to use our advanced ZigBee intrusion devices as part of their smart home and business solution.

Tyco is pleased to introduce the MCT-370, a fully supervised long range compact ZigBee wireless magnetic contact transmitter, designed primarily for protecting doors and windows.

Offering superior performance and prolonged battery life, its durable capabilities support installations where a large magnet gap is required. The MCT- 370 is fast and easy to install in a wide range of residential and commercial environments, and requires very little maintenance due to its user friendly, no tools required battery replacement process.

The MCT-370 is also designed to harvest environmental data that can be sent to smart home systems.

Specifications

Wide Magnet Gap	Over 25.4 mm / 1 in
Supported Network	ZigBee H.A 1.2, OTA firmware upgrade support
Frequency	2.4 GHz as per IEEE 802.15.4
Battery Type	3V Lithium CR2; Panasonic or Duracell Ultra only
Nominal Battery Capacity	850 mAh
Battery Life	5.9 years (for typical use); offers user friendly replacement process without the use of tools
Tamper Alert	Back tamper protection; reported when a tamper event occurs
Operating Temperature	0°C to 49°C / 32°F to 120°F
Operating Environment	Indoor
Dimensions (L x W x H)	44.5 x 22 x 24 mm / 1.75 x 0.87 x 0.94 in
Weight (including battery)	21.5 g / 0.8 oz

Certifications

