

- Advanced Event Detector
- Cooperation between Video Agents
- Distributed recording system
- Self-adaptive algorithms
- Drag and drop set-up
- PTZ control
- Multiple stream, adaptive frame rate
- H264, full D1, full frame rate
- Resolution and frame rate adjustable
- Two-way AAC audio
- Alarm inputs and relay outputs
- Integration in third party software
- SD Secure Digital Slot
- 80GB Hard Disk (optional, H264 recording)



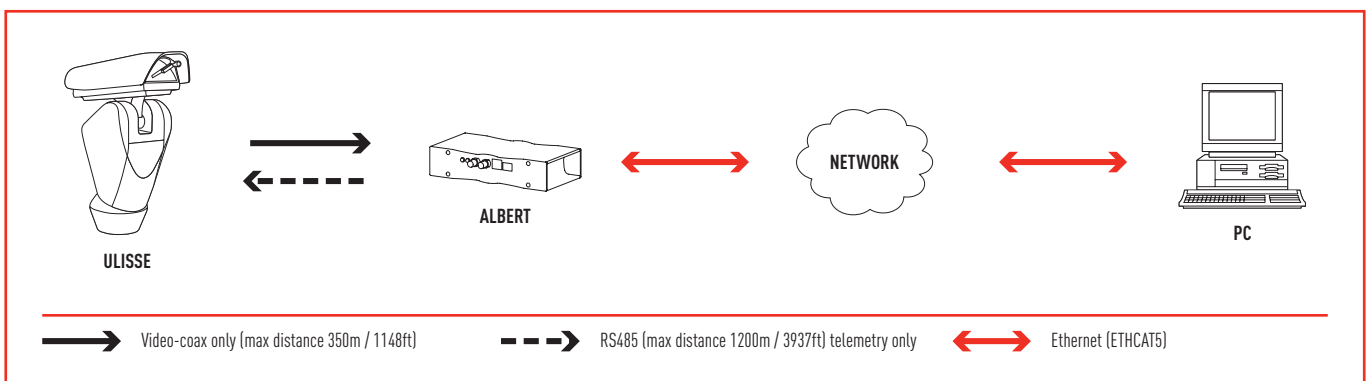
The Video Agent ALBERT is a revolutionary digital security product, with advanced algorithms for the Video Content Analysis and with extraordinary capabilities like Intelligent Cooperation and Assisted Navigation. Like a member of a team, each ALBERT unit broadcasts information about its activities, knows what the others are doing and sets its PTZ parameters accordingly to perform cooperative actions, with a minimum of setup effort and no need of a central server. Thanks to the Assisted Navigation capability, when an operator is monitoring an area with a given camera, the system automatically monitors the best neighbouring areas. If the active view changes (PTZ camera) the neighbouring views change accordingly. When ALBERT detects an event, it broadcasts a priority message to the others and all available units promptly orientate the camera towards the alarmed area.

ALBERT features an advanced, outdoor-oriented, self-learning event detector. Minimum configuration parameters are needed. The system will automatically adapts parameters to moving trees, rain, sea waves, light changes and shadows.

Video Agents cooperate for optimal covering of the areas, reducing overlapping between cameras while patrolling and cooperate to provide the best video sequence of views, for a given area.

Thanks to an on board engine, it is possible to search for events and play back the related video.

In case of someone tampering with one Video Agent, neighbouring units can cover the given area until repairs have been made.



## TECHNICAL DATA

### GENERAL

1 video input number (PAL/NTSC)

1 audio input (mono)

1 audio output (stereo)

Active loopthrough

#### Supported resolutions:

- 720x576/720x480 D1
- 720x288/720x240 2CIF
- 360x288/360x240 CIF
- 180x144/180x120 QCIF

#### Video Compression Algorithms:

- H.264 main profile
- Snapshot Jpeg

Audio Compression Algorithms: AAC Standard

1 simultaneous encoder

2 streaming simultaneous outputs

Web server

Ethernet port: 10/100 Mbit

SD slot

Hard Disk: 80GB

2 digital outputs (contacts relay)

2 digital inputs (alarm contacts)

### MECHANICAL

Made of aluminium

Epoxypolyester powder painting, orange colour

Dimensions: 200Wx100Dx44Hmm

### ELECTRICAL/VIDEO

Power Supply 12Vdc

Power consumption 4W

Power consumption with hard disk 7W

### COMMUNICATIONS

Dome control RS485

### PROTOCOL

VIDEOTECH MACRO

PELCO D

*Pelco D is registered trademark.*

*Because ALBERT may be interfaced with equipment not manufactured by Videotec, it is possible that the interface protocols have changed or are in a different configuration from earlier tested units from us. Videotec recommends a bench test prior to installation, Videotec will not be liable for any installation costs or lost revenues in the event a compatibility problem will occur.*

### RELATED PRODUCTS

ULISSE Positioning Unit

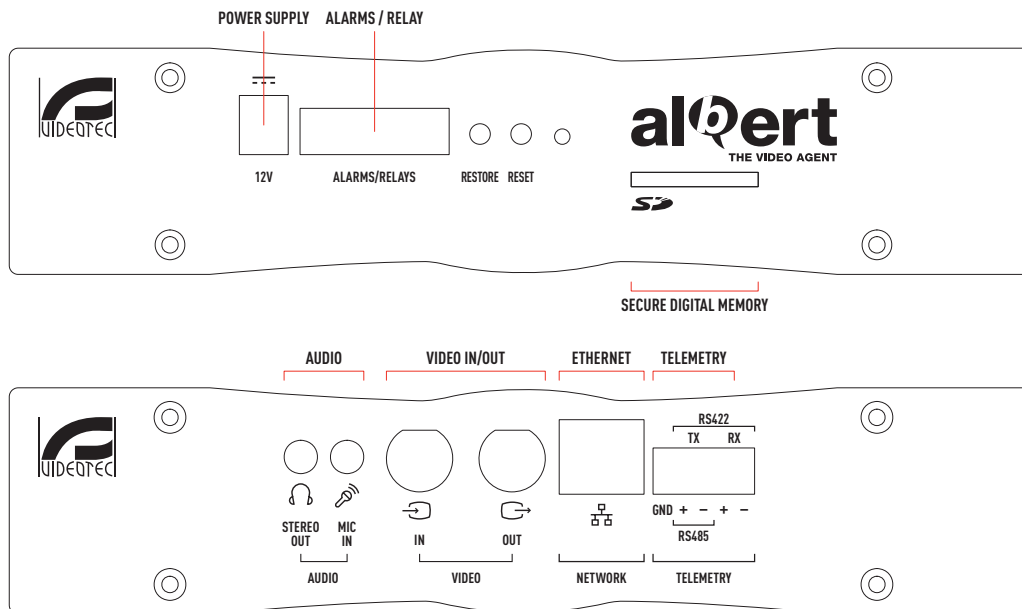
DCJ Keyboard to control matrices, multiplexers and telemetry equipped with three axis joystick

DCT Touch screen keyboard to control matrices, multiplexers, DVRs and telemetry equipped with three axis joystick

### ENVIRONMENT

Indoor

Operating temperature: 0-50°C



Unit Weight:  
0,550Kg (with hard disk 0,680Kg)

Package Weight:

Package Dimension (BxHxL):

Master Carton:

**OPERATOR CONSOLE**

**Area setting**

Agents Settings Areas Settings Views Settings Submit Model

VTEC  
Park A  
Park B  
Canteen  
Gallery  
Front E  
Front G  
Exit A  
Exit B  
Rear E  
West A  
West B

West A  
Canteen  
Park B  
Park A

Area Name: VTEC

Logger

Pencil drawing an area

Grafical tool

List of areas

**Preset settings: association of cameras to areas of interest with easy drag and drop**

Agents Settings Areas Settings Views Settings Submit Model

Ulisse 2 - V  
Ulisse 4 - V  
LIP1 - WL  
LIP2 - W  
LIP3 - TB  
Ulisse 5 - V  
Ulisse 8 - V  
LIP5 - WL  
Ulisse 7 - V  
LIP9 - TV  
LIP9 - TV

Park B  
Curve  
Park A  
Front E  
Gallery

Ulisse 4 - V  
192.168.0.4  
Model: Manufacturer: Storage Usage: 3% of 30.59 GB Firmware release: 0

Park A - Ulisse 4  
Area: Park A  
Agent: Ulisse 4 - V  
ViewQuality: 10  
mer 23. mag 13:33:55 2008

Park B - Ulisse 4  
Area: Park B  
Agent: Ulisse 4 - V  
ViewQuality: 8  
mer 23. mag 13:30:55 2008

Front E - Ulisse 4  
Area: Front E  
Agent: Ulisse 4 - V  
ViewQuality: 10

Front G - Ulisse 4  
Area: Front G  
Agent: Ulisse 4 - V

Panic: 32.82  
Tilt: 9.60  
Zoom: 1.00  
View Quality: 1.0

View Name: Park A - Ulisse 4

Logger

A camera is being dragged and dropped

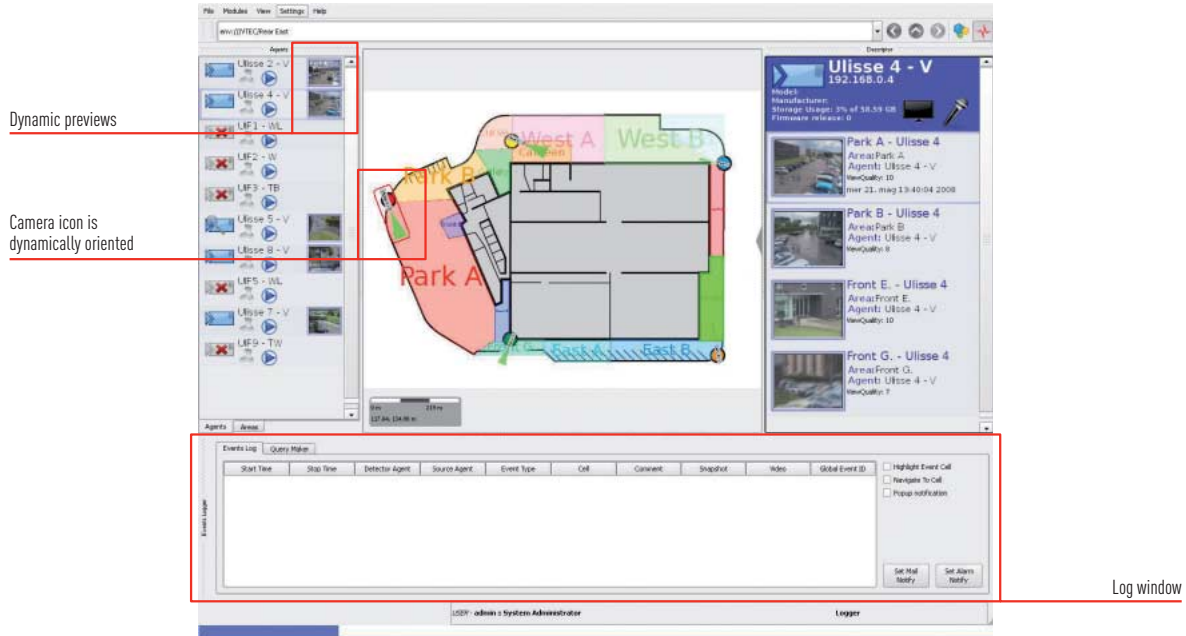
Site graphical representation

Preset window with preview

List of preset

**OPERATOR CONSOLE**

Software in action showing views and event log bar



Example of Assisted Navigation at Videotec's installation

