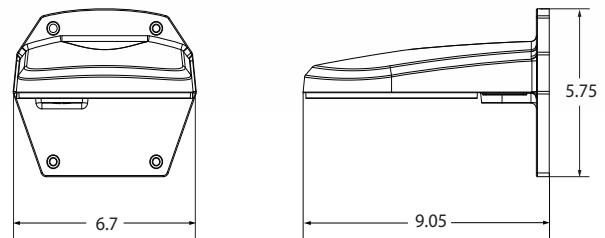


## Wall-Mount Arm V670-HDB243



- ▶ Wall-mount adapter for indoor and outdoor camera domes
- ▶ Die-cast aluminum construction with polyester powder-coat finish
- ▶ Maximum load is 11 lb (5 kg)
- ▶ 3/4-inch NPT inlet fitting
- ▶ Length: 9.05" (230 mm)
- ▶ Width: 6.7" (170 mm)
- ▶ Height: 5.75" (146 mm)
- ▶ Weight: 2.87 lb (1.3 kg)

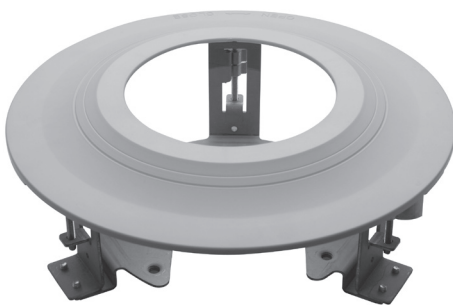
### Dimensional Data



### Application

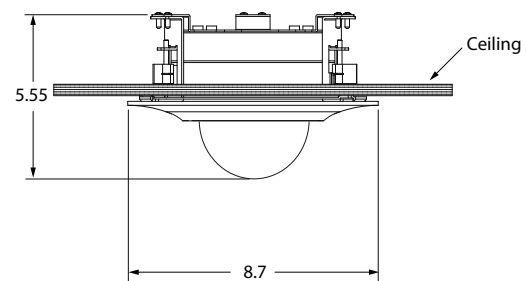
- ▶ V672D Dome
- ▶ V672V-1/V988D Vandalproof Dome
- ▶ Cruiser™ SN673V-B/SN693V PTZ camera
- ▶ V670-HCM155/V670-HCM151/V670-HCM-150

## In-Ceiling Kit V670-HCS254V



- ▶ In-ceiling mounting kit for outdoor camera domes
- ▶ For flush mounting in a drop ceiling
- ▶ Steel and injection-molded plastic
- ▶ Maximum load is 1.3 lb (0.6 kg)
- ▶ Diameter: 8.7" (220 mm)
- ▶ Height: 5.55" (141 mm)
- ▶ Weight: 1.1 lb (0.5 kg)

### Dimensional Data



### Application

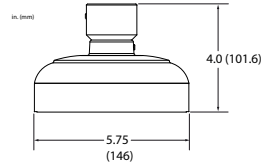
- ▶ V672V-1/V988D Vandalproof Dome

## NPT Pipe Adapter V670-HDA202-1



- ▶ Converts outdoor domes to pendant mounting
- ▶ Die-cast aluminum construction
- ▶ 1-1/2-inch NPT male adapter
- ▶ Height: 4" (101.6 mm)
- ▶ Diameter: 5-3/4" (146 mm)
- ▶ Weight: 1.4 lb (0.64 kg)

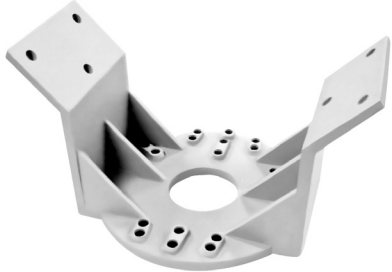
### Dimensional Data



### Application

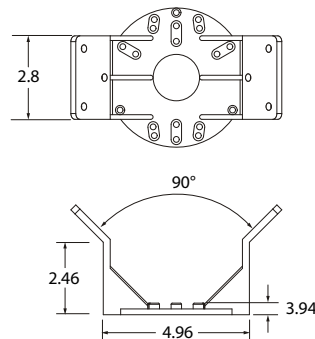
- ▶ V672V-1/V988D Vandalproof Domes
- ▶ Cruiser SN673V-B/SN693V Domes
- ▶ SVFT-WM/SVFT-UWM Wall Mounts

## Corner-Mount Adapter V670-HCM150



- ▶ Die-cast aluminum construction
- ▶ Maximum load is 63.5 lb (25 kg)
- ▶ Depth: 2.8" (72 mm)
- ▶ Width: 4.96" (126 mm)
- ▶ Weight: 0.98 lb (0.45 kg)

### Dimensional Data



### Application

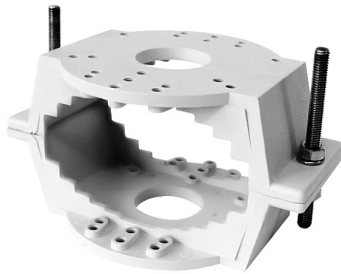
- ▶ SN680D/SN683D/SN240D, Cruiser™ SN673V/SN693V PTZ domes (requires V672-HDB242E or V672-HDB243)
- ▶ V933EZ, V672D, V672V-1, V672B, V988D, V988B, V922B (requires V672-HDB242E or V672-HDB243 or V988B-BOX)
- ▶ V670-HDB243 Wall-Mount Arm (requires V670-HCM155); V672-HDB242E (with HCM154)
- ▶ V988B-BOX

Data Sheet Number: V299-60  
Dated: 3/2019

Vicon Data Sheet Part Number: 8009-7299-60-03  
Specifications subject to change without notice.

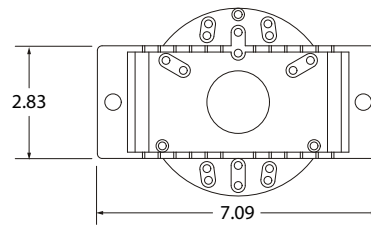
Vicon and its logo are registered trademarks of Vicon Industries Inc.  
Copyright © 2019 Vicon Industries Inc. All rights reserved.

## Pole-Mount Adapter V670-HCM151



- ▶ Die-cast aluminum construction
- ▶ Maximum load is 63.5 lb (25 kg)
- ▶ Fits pipes with diameters of 2.95" to 5.7" (75 mm to 145 mm)
- ▶ Length: 7.09" (180 mm)
- ▶ Width: 2.83" (72 mm)
- ▶ Weight: 1.64 lb (0.75 kg)

### Dimensional Data



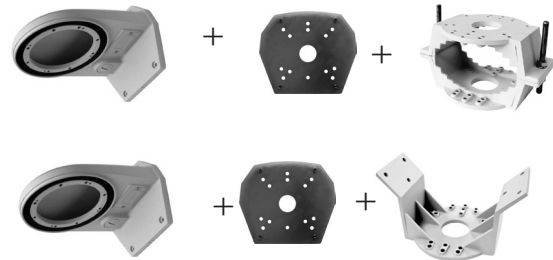
### Application

- ▶ SN680D/SN683D/SN240D, Cruiser™ SN673V/SN693V PTZ domes (requires V672-HDB242E or V672-HDB243)
- ▶ V933EZ, V672D, V672V-1, V672B, V988D, V988B, V922B (requires V672-HDB242E or V672-HDB243 or V988B-BOX)
- ▶ V670-HDB243 Wall-Mount Arm (requires V670-HCM155); V672-HDB242E (with HCM154)
- ▶ V988B-BOX

## Adapter V670-HCM155



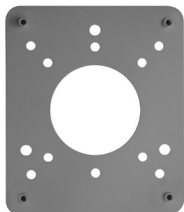
- ▶ Allows the wall arm to be mounted on a corner or pole mount adapter
- ▶ Easily installed



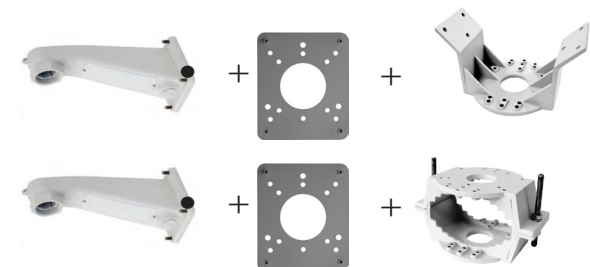
### Application

- ▶ V670-HDB243 and V670-HCM150/ V670-HCM151 for the Cruiser SN673V-B/SN693V, V672V-1, V672D, V933EZ, V988D Domes

## Adapter V670-HCM154



- ▶ Allows the wall arm to be mounted on a corner or pole mount adapter
- ▶ Easily installed



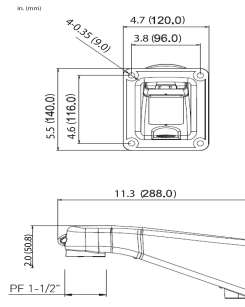
### Application

- ▶ V670-HDB242E and V670-HCM150/ V670-HCM151 for the SN680D/SN683D/SN240D and Cruiser SN673V-B/SN693V

## Pendant Mount Arm V670-HDB242E



- ▶ Pendant arm wall/ceiling mount
- ▶ Die-cast aluminum construction
- ▶ Maximum load is 19.8 lb (9.0 kg)
- ▶ Depth: 11.3" (288 mm)
- ▶ Height: 5.5" (140 mm)
- ▶ Weight: 3.8 lb (1.8 kg)



### Application

- ▶ SN680D, SN683D and SN240D Domes

## Ceiling Mount V670-HDB241



- ▶ Light-duty ceiling mount
- ▶ Die-cast aluminum construction
- ▶ Maximum load is 19.8 lb (9.0 kg)
- ▶ Inlet Dimension: PF 1-1/2 in.
- ▶ Weight: 2.65 lb (1.2 kg)

### Application

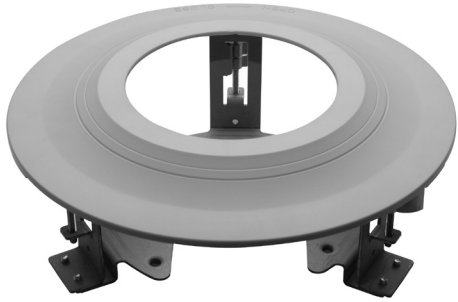
- ▶ SN680D, SN683D and SN240D Domes

Data Sheet Number: V299-60  
 Dated: 3/2019

Vicon Data Sheet Part Number: 8009-7299-60-03  
 Specifications subject to change without notice.

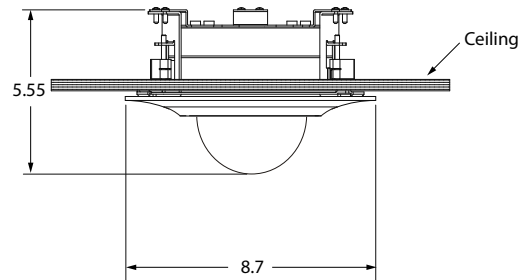
Vicon and its logo are registered trademarks of Vicon Industries Inc.  
 Copyright © 2019 Vicon Industries Inc. All rights reserved.

### In-Ceiling Kit V670-HCS300



- ▶ In-ceiling mounting kit
- ▶ Steel and injection-molded plastic
- ▶ Maximum load is 1.3 lb (0.6 kg)
- ▶ Diameter: 8.7" (220 mm)
- ▶ Height: 5.55" (141 mm)
- ▶ Weight: 1.1 lb (0.5 kg)

#### Dimensional Data

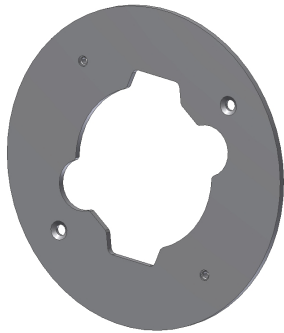


#### Application

- ▶ Cruiser SN673V-B Domes

---

### Trim Ring V670-TRIM



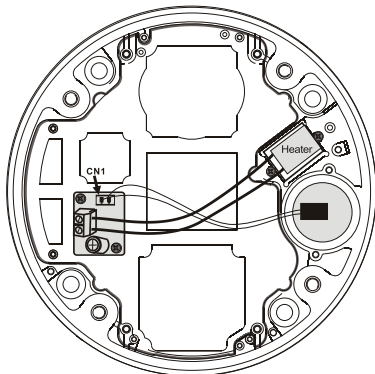
- ▶ Allows the camera domes to be mounted on a 4 x 4 electrical box with no gaps, for a neat look
- ▶ Easily installed
- ▶ Aluminum construction; 0.125 in. (0.03 mm) thick
- ▶ 6.25 in. (159 mm) diameter

#### Application

- ▶ V672D and V672V Domes

---

### Heater Accessory V670-HT202VF/V670-HT202VK



- ▶ Extends low range temperature of camera dome to -20° (-29° C)
- ▶ Easily installed at the factory or at a dealer site

#### Application

- ▶ V672D/V672V Domes

### Wall Mount V670-WM



- ▶ Wall mount
- ▶ Maximum load is 11 lb (5 kg)
- ▶ Height: 7.5 in. (191.5 mm); Width: 8.8 in. (224 mm)
- ▶ Weight: 1.6 lb (0.50 kg)

#### Application

- ▶ SN672V-B and SN693V Cruiser PTZ Domes
- ▶ V670-BOX and V670-PMB

---

### Pendant Mount V670-PM



- ▶ Pendant/Ceiling mount
- ▶ Maximum load is 11 lb (5 kg)
- ▶ Height: 13.9 in. (353 mm)
- ▶ Weight: Approx. 2.0 lb (0.9 kg)

#### Application

- ▶ SN672V-B and SN693V Cruiser PTZ Domes
  - ▶ V670-BOX and V670-PMB
-

### Backbox V670-BOX

- ▶ For ease of cabling
- ▶ Diameter: 5.75 in. (146.1 mm)
- ▶ Weight: 1.1 lb. (0.50 kg)



#### Application

- ▶ SN672V-B and SN693V Cruiser PTZ Domes
- ▶ V670-WM and V670-PM

---

### Pendant Mount Box V670-PMB

- ▶ For ease of cabling
- ▶ Diameter: 5.75 in. (146.1 mm)
- ▶ Weight: 1.1 lb. (0.50 kg)



#### Application

- ▶ SN672V-B and SN693V Cruiser PTZ Domes
  - ▶ V670-WM and V670-PM
-