



PRODUCT SPECIFICATION

MODEL: V2400WM AND V2400AWM

PRODUCT CODE: 1954 AND 1957

DESCRIPTION: HEAVY-DUTY WALL MOUNTS

Models V2400WM and V2400AWM Heavy-Duty Wall Mounts are designed to support pan-and tilt drives, scanners, camera/lens systems, and environmental housings with total camera station load ratings of up to 200 pounds (91kg) for the V2400WM and 100 pounds (45 kg) for the V2400AWM. These industrial, outdoor units are constructed of die-cast aluminum.

TECHNICAL INFORMATION

MECHANICAL

Mounting: Wall or vertical structure; four 3/8-inch bolts. See Figure 1.
Wall or corner installation; support strut and corner mounting bracket. See Figure 2

Type: V2400WM; fixed
V2400AWM; adjustable.

Maximum Tilt: V2400AWM; $\pm 60^\circ$.

Maximum Rotation: V2400AWM; 360°

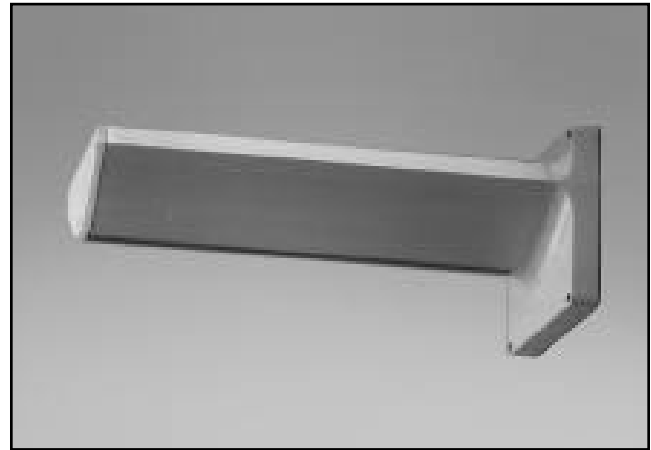
Load Rating: V2400WM; 200lb (90.8 kg)
V2400AWM; 100lb (45.4 kg)

Application: Outdoor.

Cable Runs: Provision to run cables through to base of unit.

Construction: Base; die-cast aluminum
Extrusion; aluminum.
End cap; foam-molded plastic.

NOTES	SPEC NO.	REV.	SEC.
SUPERSEDES PRODUCT SPECIFICATION 417-1084	417	289	7



V2400WM WALL MOUNT

Finish: Base; cast-iron gray semi-gloss enamel.

Dimensions: See Figures 1,2 and 3.

Weight: See Table 1.

Shipping Information See Table 1.

ASSOCIATED EQUIPMENT AND ACCESSORIES

Model V2400CMB Corner Mounting Bracket: For corner mounting capabilities. Product Code 1956.

Model V2400S Support Strut: Provides added strength for heavy loads. Can be used alone or with corner mounting bracket. Product Code 1955.

Model V20A Pole Mounting Adapter: Accommodates pole diameters from 4 to 10 inches (10 cm to 25 cm). Product Specification 532.

**TABLE I
UNIT WEIGHTS AND SHIPPING INFORMATION**

Model No.	Weight		Shipping Dimensions						Shipping Weight		Shipping Volume	
	lb	kg	Height		Width		Length		lb	kg	ft ³	m ³
			in.	cm	in.	cm	in.	cm				
V2400WM	12.3	5.6	8.6	21.8	9.3	23.6	30.9	78.5	15.4	7.0	1.4	0.04
V2400AWM	14.3	6.5	8.6	21.8	9.3	23.6	30.9	78.5	17.9	8.1	1.4	0.04
V2400S	1.9	0.9	3.6	9.1	3.6	9.1	30.3	77.8	2.5	1.1	0.2	0.006
V2400CMB	13.2	6.0	8.0	20.3	11.0	27.9	12.5	31.8	14.2	6.4	0.6	0.02

Product specifications subject to change without notice.
Copyright © 1999 Vicon Industries Inc. All rights reserved.

Vicon part number 8006-7417-00-00
Vicon and its logo are registered trademarks of Vicon Industries Inc.

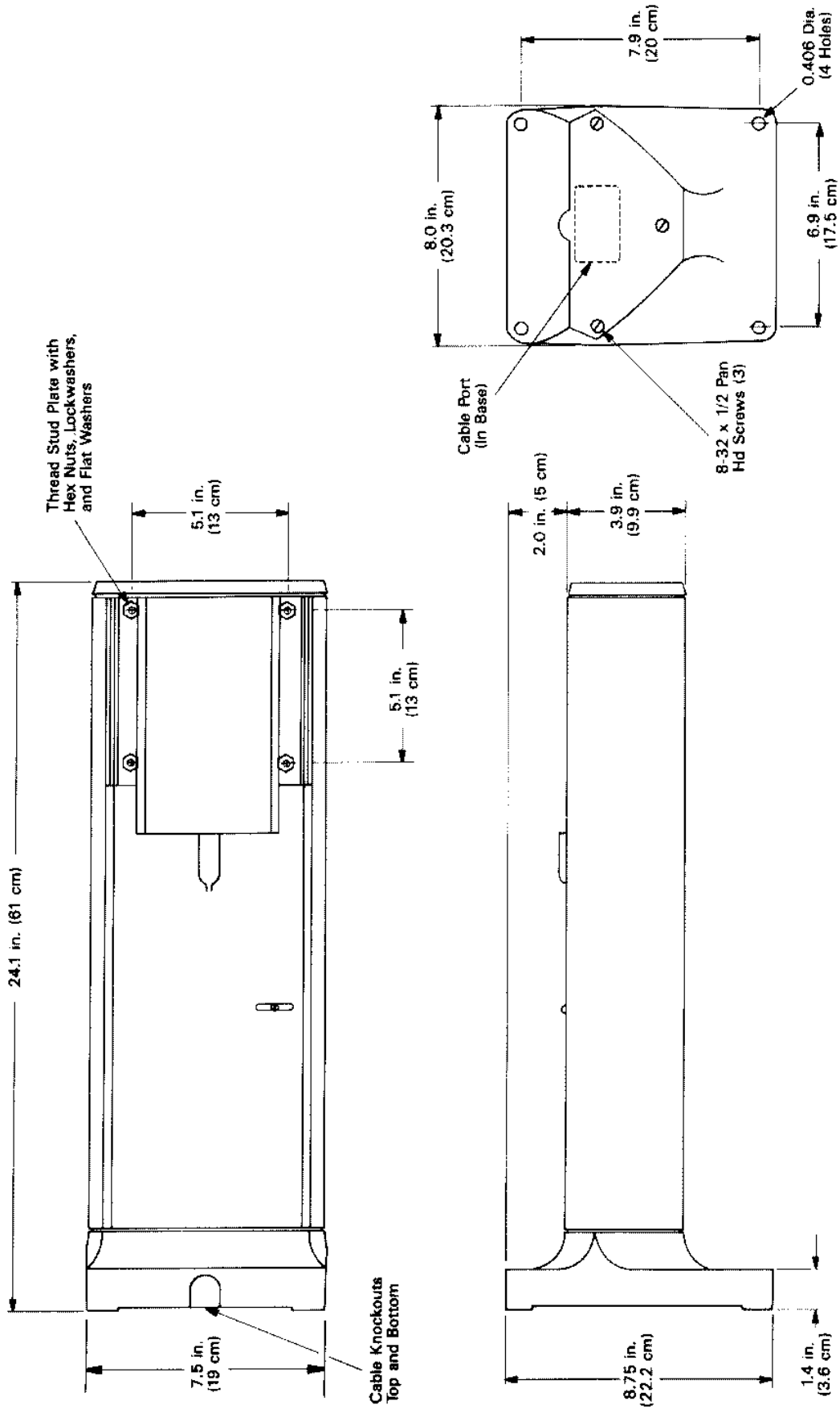
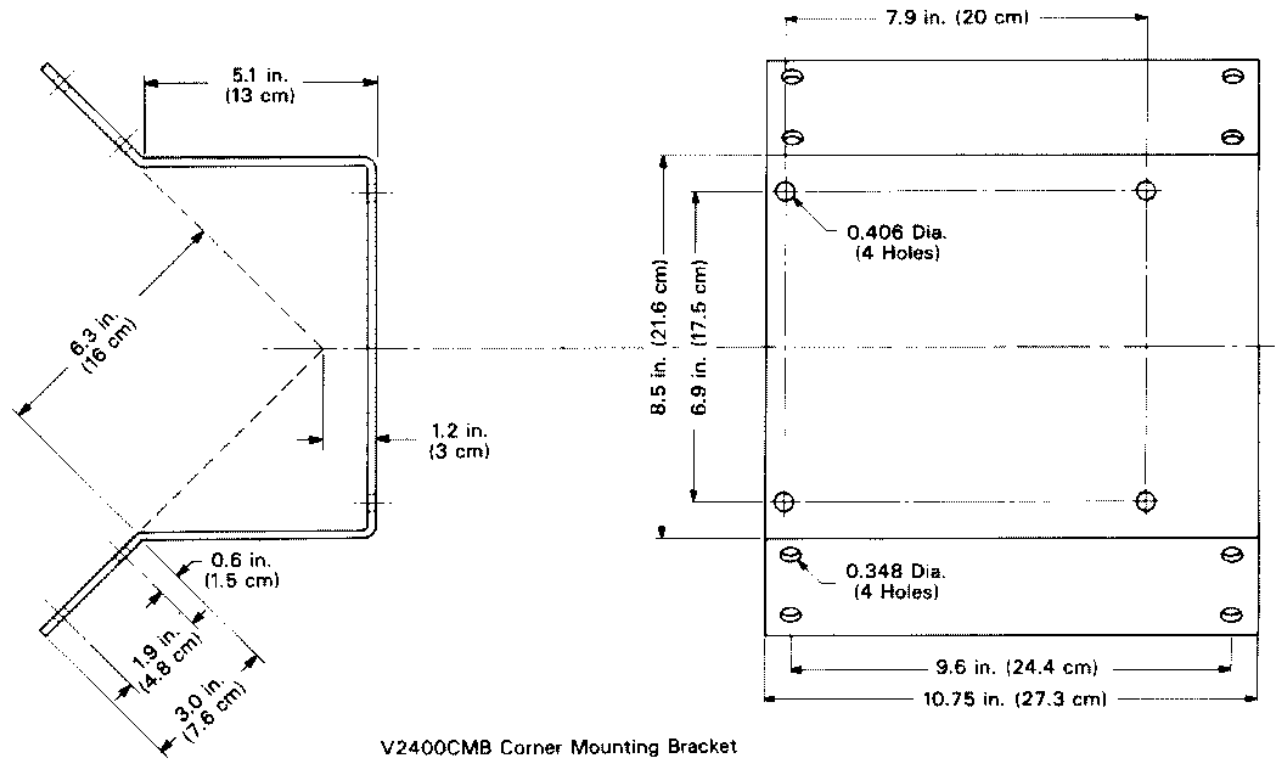
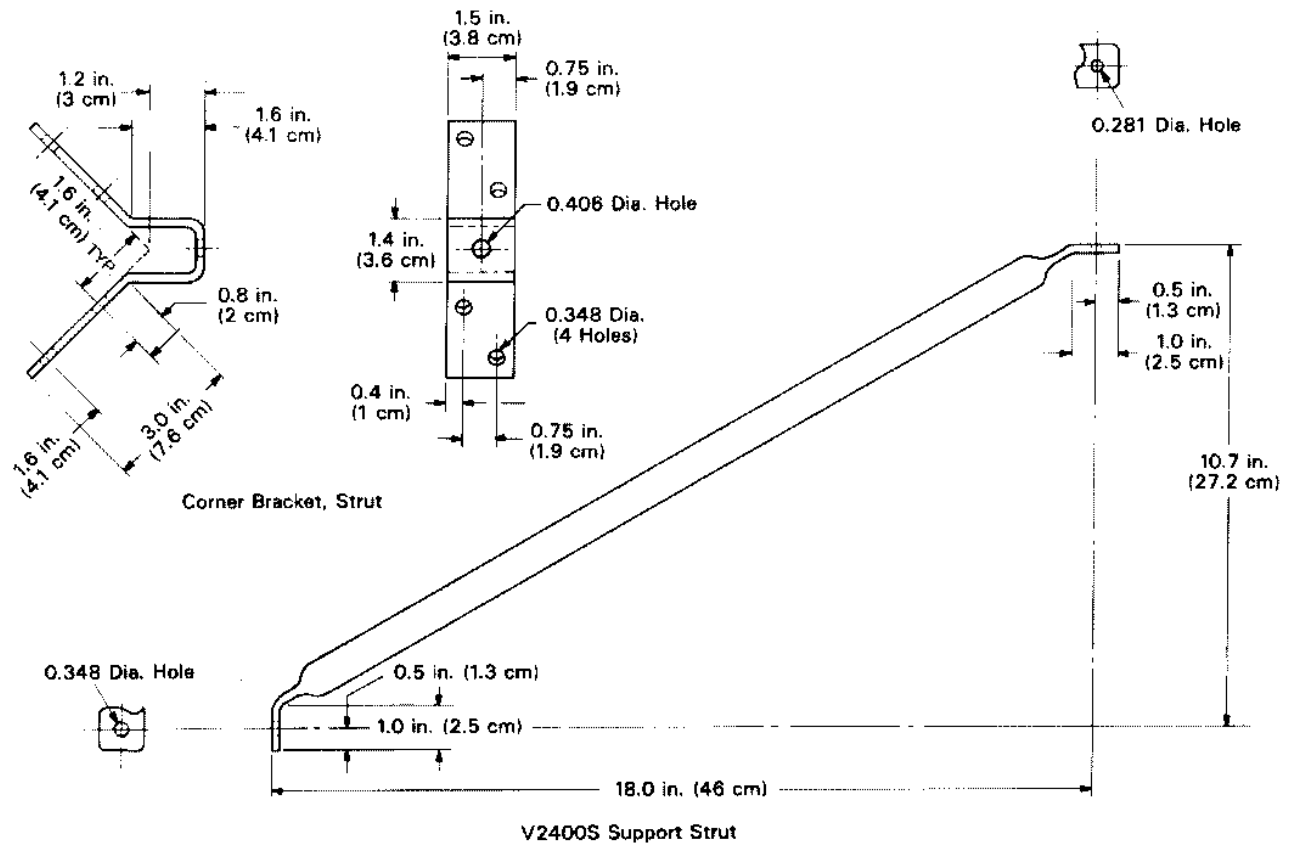


Figure 1
V2400WM Outline Drawing

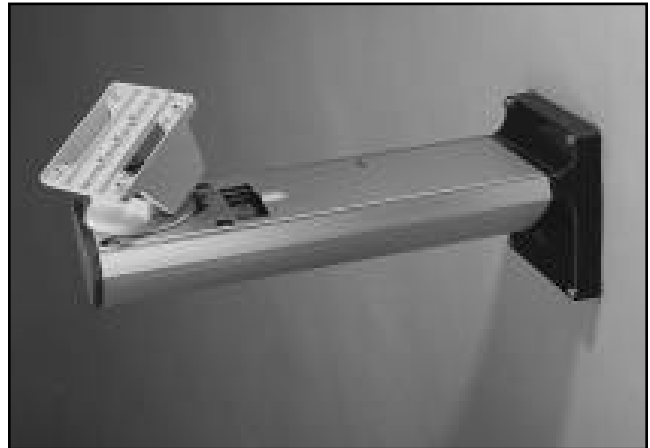
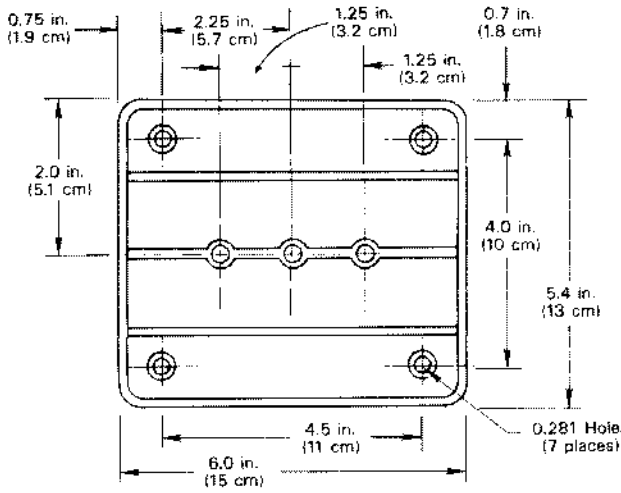


V2400CMB Corner Mounting Bracket

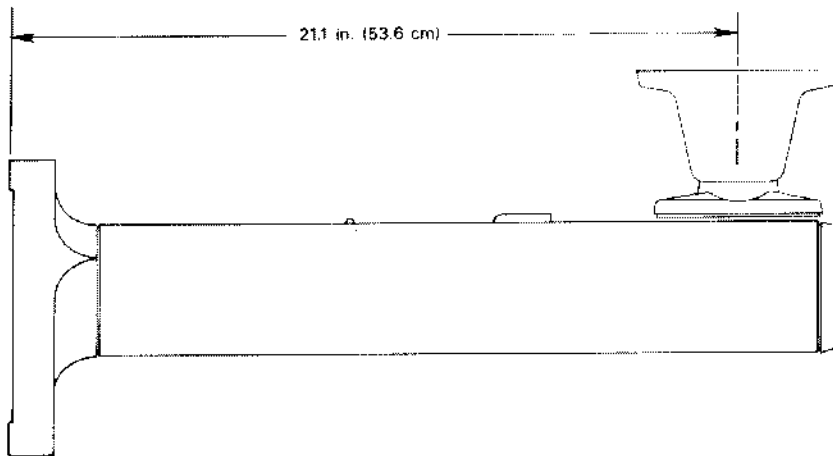
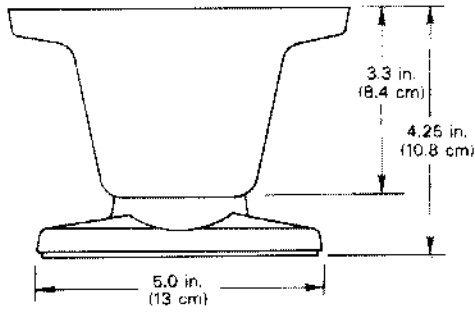


V2400S Support Strut

Figure 2
Mounting Accessories



V2400AWM WALL MOUNT



**Figure 3
V2400AH Adjustable Head**