

Overview

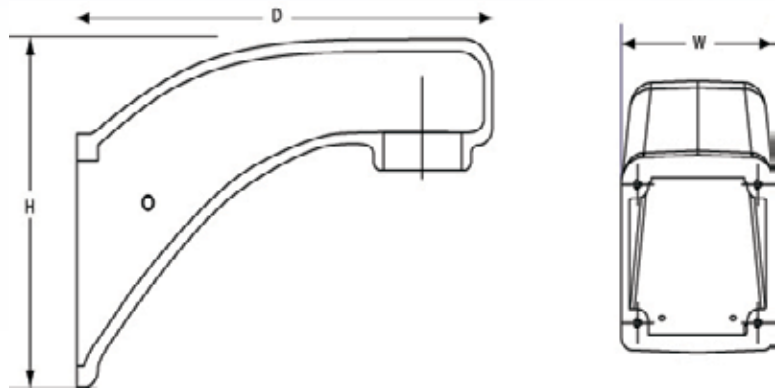
Vicon offers several mounting options to increase its versatility. These include wall mounts, ceiling mounts, parapet mounts and mounting adapters for corner and pole mounting.

Wall Mount SVFT-WM-1



- Wall mounting camera domes
- Cast aluminum construction
- 1-1/2-inch NPT-F pipe thread
- Height: 4.9 in. (124 mm)
- Width: 3.5 in. (89 mm)
- Depth: 7.5 in. (191 mm)
- Weight: 1.4 lb (0.6 kg)

Dimensional Data

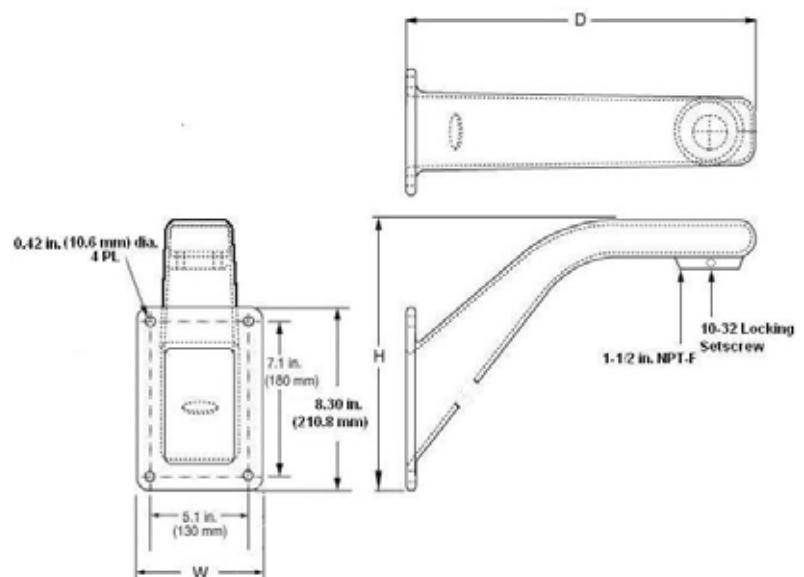


Wall Mount SVFT-UWM-1



- Wall mounting camera domes
- Cast aluminum construction
- 1-1/2-inch NPT-F pipe thread
- Height: 11.6 in. (295 mm)
- Width: 6.3 in. (160 mm)
- Depth: 14.6 in. (371 mm)
- Weight: 4.5 lb (2.0 kg)

Dimensional Data



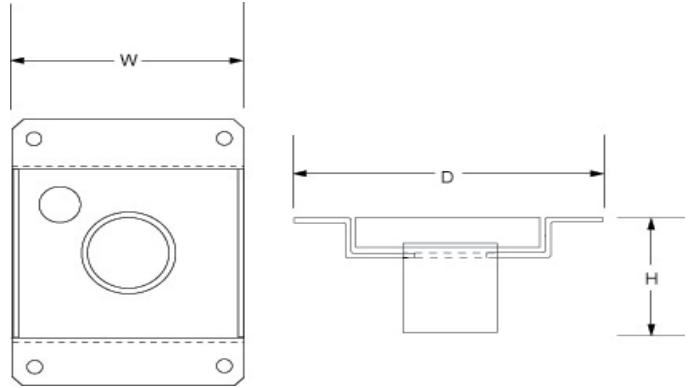
CAMERA MOUNTING ACCESSORIES

Ceiling Mount SVFT-UCM-1



- Ceiling mounting
- Carbon steel construction
- 1-1/2-inch NPT-F pipe thread
- Height: 3.0 in. (76 mm)
- Depth: 9.1 in. (231 mm)
- Width: 6.0 in. (152 mm)
- Weight: 3.3 lb (1.5 kg)

Dimensional Data

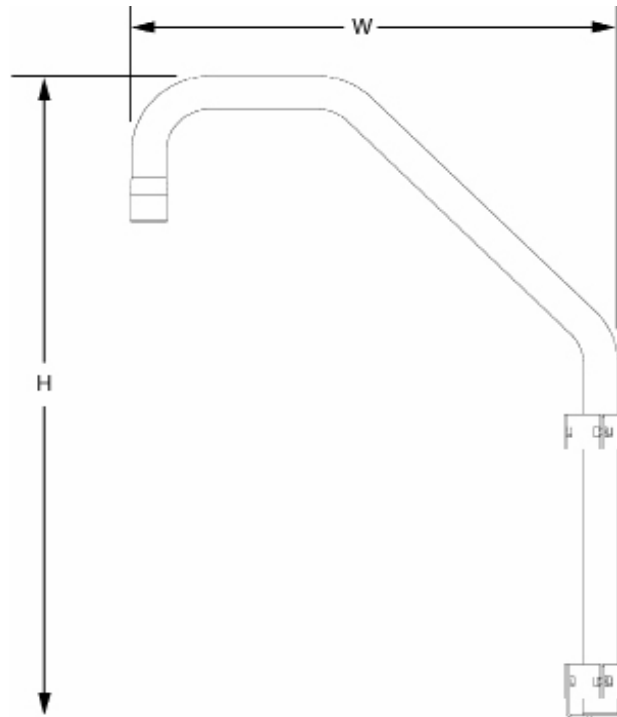


Parapet Mount SVFT-UPM-1



- Designed specifically for parapet mounting camera domes
- Aluminum and steel construction
- 1-1/2-inch NPT-F pipe thread
- Height: 37 in. (940 mm)
- Width: 27 in. (686 mm)
- Load Rating: 40 lb (18 kg)
- Weight: 7.6 lb (3.4 kg)

Dimensional Data



Data Sheet Number: V134-51

Vicon Data Sheet Part Number: 8009-7134-51-00

Dated: 1/2019

Specifications subject to change without notice.

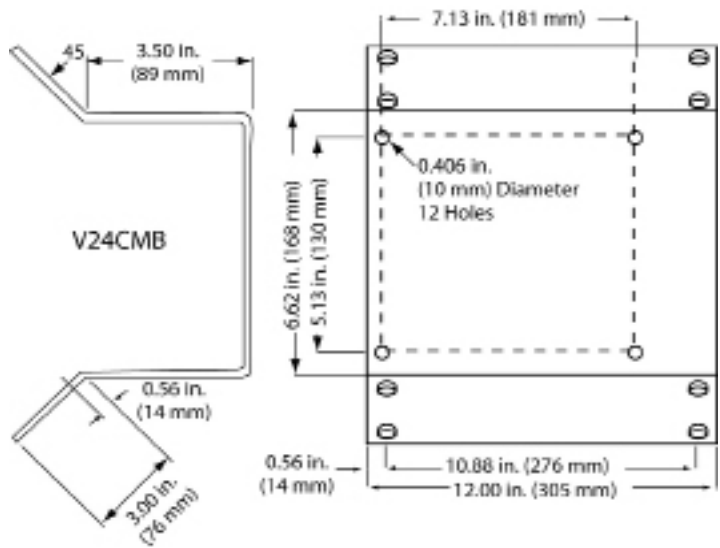
Vicon and its logo are registered trademarks of Vicon Industries Inc.

Copyright © 2019 Vicon Industries Inc. All rights reserved.

Corner Mount Bracket V-24CMB-1



Dimensional Data



- Designed for corner mounting SVFT wall mounts
- Corrosion-protected steel construction
- Height: 6.6 in. (168 mm)
- Width: 12 in. (305 mm)
- Weight: 8.2 lb (3.7 kg)

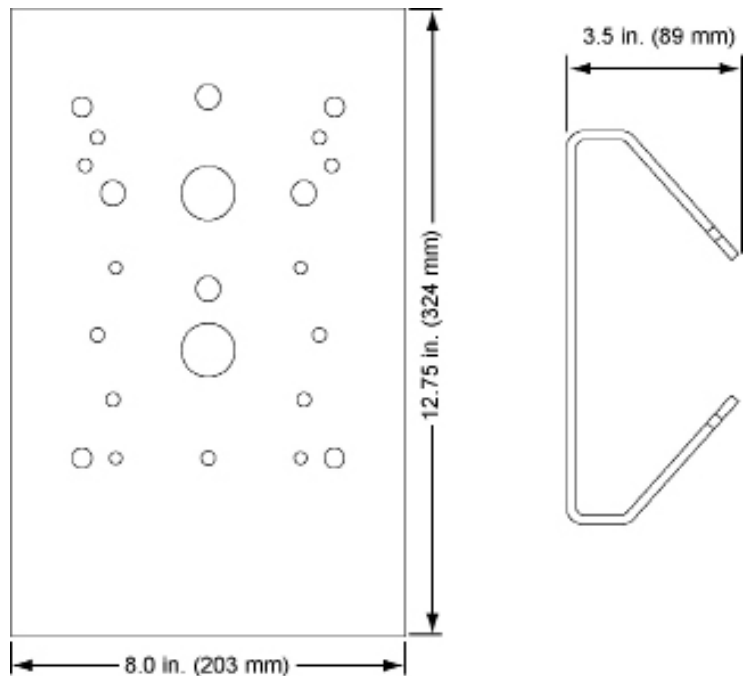
Application

- For corner mounting SVFT-WM-1 and SVFT-UWM-1 wall mounts

Pole Mount Adapter V-20B-A-1 Series



Dimensional Data



- Designed for pole mounting SVFT wall mounts
- Available with aluminum or stainless steel construction
- Fits 4 - 10 in. diameter poles
- Height: 12.75 in. (324 mm)
- Width: 8 in. (203 mm)
- Depth: 3.5 in. (89 mm)
- Weight: Aluminum - 3.7 lb (1.7 kg); steel - 11 lb (5 kg)

Application

- For pole mounting SVFT-WM-1 and SVFT-UWM-1 wall mounts