



## Powerful video security built for the toughest environments

### Overview

Verkada's Bullet Series delivers enterprise-grade security with leading edge based processing and onboard storage in a new, bold form factor. Built to withstand the toughest environments, the Bullet Series features a sealed aluminum housing, ensuring cameras stay protected with an IK10 vandal resistance and IP67 waterproof rating.

With powerful long range IR sensors, image resolutions up to 4K and lens options for wide angle or telephoto, Verkada bullet cameras deliver stunning video quality day or night, even in the most challenging indoor and outdoor environments.

All cameras in the Bullet Series are part of Verkada's line of hybrid cloud cameras and work out-of-the-box. With standard features like end-to-end encryption, onboard storage, and advanced motion-based insights, organizations are able to quickly scale their coverage and increase situational awareness across any number of locations.

The Bullet Series' powerful processing delivers advanced computer vision features including Verkada's edge-based People and Vehicle Analytics. Bringing speed and efficiency to investigations, footage is processed directly on the camera, meaning results are nearly instant and always accessible.

### Industry-Leading 10-Year Product Warranty

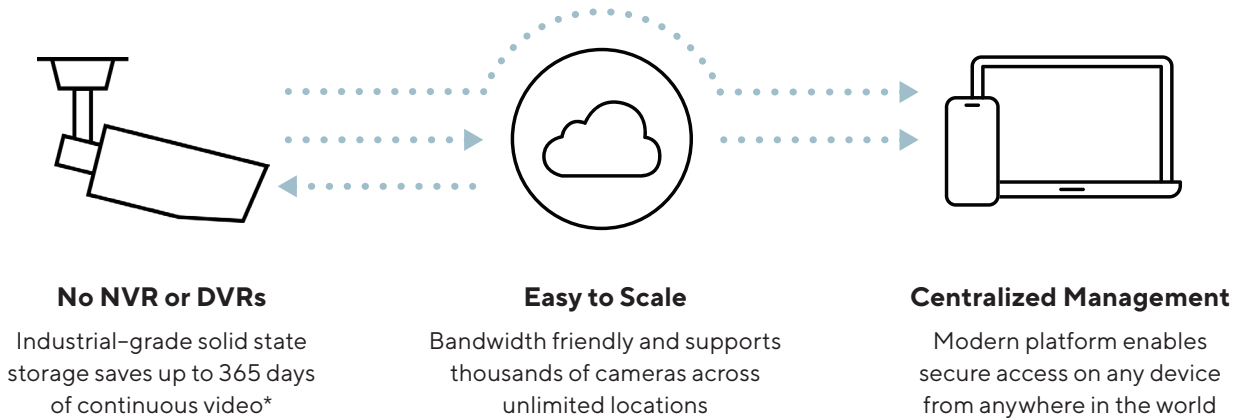
All Verkada hardware purchases are backed by our 10-year limited warranty. For more information, visit [verkada.com/support/end-user-agreement](https://verkada.com/support/end-user-agreement).

### Key Features

- Available in wide angle and telephoto lens options
- Long-range IR illuminators for optimal nighttime visibility
- License Plate Recognition available for telephoto cameras
- Highly durable, vandal resistant form factor
- Edge-based processing for motion, People, and Vehicle Analytics
- Up to 365 days of onboard storage in standard quality
- Low-bandwidth impact, only using 20-50 kbps per camera at rest
- Waterproof IP67-rated aluminum housing with hermetically sealed lens assembly
- Highly durable with an IK10 rating 20-50 Kbps per camera at rest



## Verkada's Hybrid Cloud Architecture



## The reliability of on-camera solid-state storage, with the accessibility of the cloud

### Simple to Install

- No NVRs, DVRs, or servers—just a PoE connection
- Cameras come online and configure in minutes
- No added software or complexities like port forwarding

### Easy to Use

- Centralized management for seamless access vertically anywhere
- No training required to access footage and features
- Find, download, and share footage from any device

### Advantages of Cloud-Managed Solution

- Secure remote access on any device nearly anywhere
- Real-time alerts if cameras fall offline
- SAML-based integration with single-sign on (SSO) solutions
- Continuous updates with new AI features
- Instantly share live footage via SMS and email
- Live, proactive alerting based on unusual activity
- People counting and heatmaps to visualize your space

### Ready For Scale

- Bandwidth-friendly, using 20-50 Kbps per camera in steady mode
- Scale to thousands of cameras across all locations
- No added equipment needed to support additional cameras

### No Hidden Costs

- Hardware includes an industry-leading 10-year warranty
- Automatic firmware updates keep systems secure
- New features and enhancements are added at no additional costs

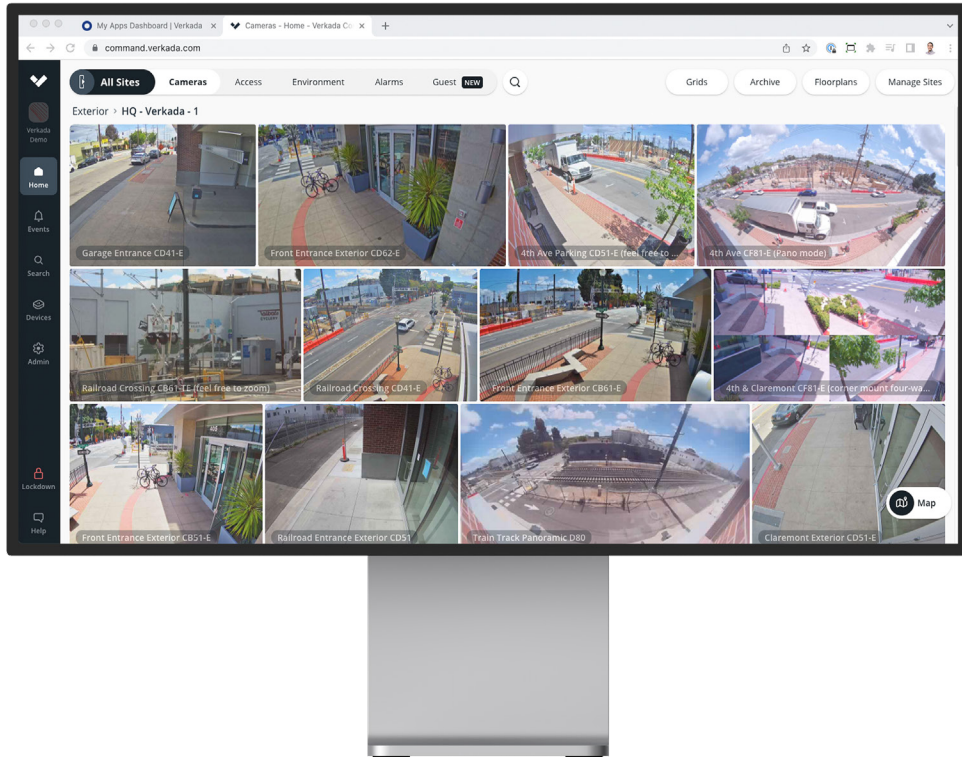
\*All our cameras record in "adaptive quality," capturing both standard and high quality streams. Standard quality video is stored up to the amount of retention specified by the customer. The amount of high quality video stored on the camera will depend on the amount of motion detected by the camera over time. To learn more, visit our website: <https://www.verkada.com/blog/recording-in-adaptive-quality/>





## Command Platform Overview

All-in-one cloud-based management software for Verkada security cameras



Command, Verkada’s cloud-based management software, is designed to deliver simple access and management for all cameras and users across all sites from virtually anywhere in the world. From Command, users can set up new cameras, create sites, manage settings, access live and archived footage, manage users, and access the advanced features powered by Verkada’s edge based analytics.

### Security & Permissions

- SAML/OAuth support for single sign-on
- 2-factor authentication options
- User permissions can be controlled at camera, site and organization levels

### Remote Access

- Access from nearly any device (desktops, smartphones, tablets)
- Native apps for iOS, Android, and Verkada’s VX52 Viewing Station

### Occupancy Trends

- Estimate how many people cross a customizable digital line on a video feed
- Monitor usage of a space to optimize business operations

### Archiving and Sharing

- Command licenses include unlimited cloud archiving
- Easily export any footage in a shareable MP4 format
- Create and share Live Links with first responders

### Powerful Edge-Based Analytics

- Search footage by date, time, and motion
- Access People and Vehicle Analytics to simplify investigations



## Verkada's People Analytics

Simplify and speed up investigations with intelligent people and face detection



People Analytics combines intelligent edge-based video processing with computer vision in the cloud to give users high-quality images of all individuals identified in the scene. With Verkada's centralized management platform, customers can filter people by various attributes, including date, time, appearance, clothing color, backpack detection, and facial matches.

## Bring Intelligence to Investigations

### Face Search

- Quickly search for matching people by selecting an existing face from your organization or by uploading an image

### Person History

- Browse through high-resolution snapshots of people detected in frame
- Save snapshots or easily access associated full-res video

### Investigate Anywhere

- People Analytics is available from any device and can be accessed from virtually anywhere in the world

### Attribute Filters

- Filter based on a range of attributes, including clothing color, gender appearance, and facial matches

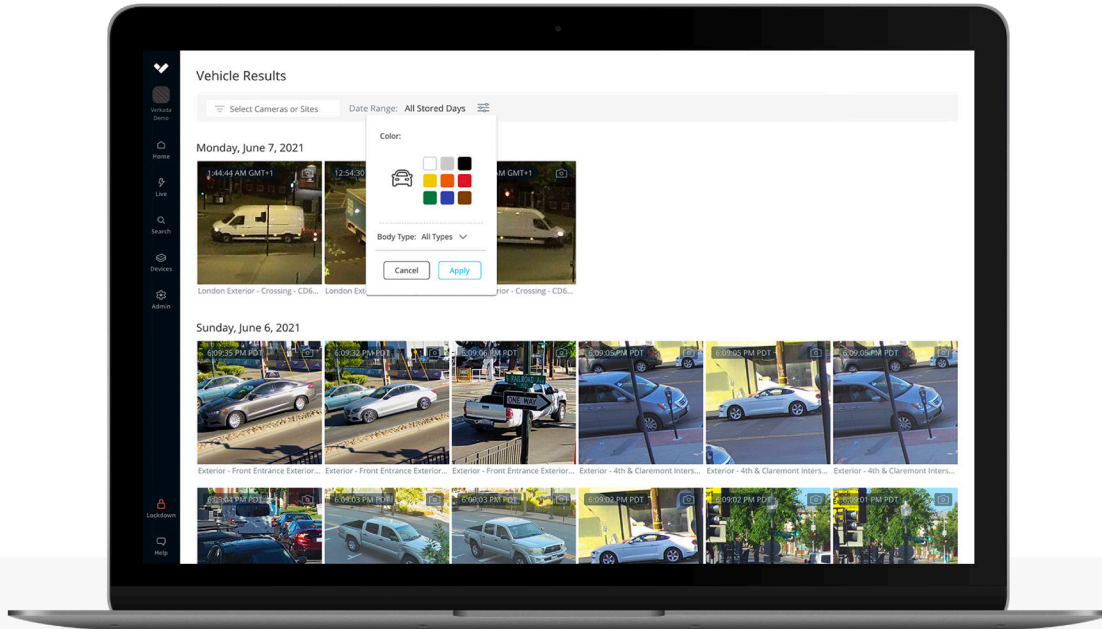
### Cross-Camera Tracking

- Easily find potential suspects or people of interest across all cameras deployed across all sites
- Create and export playback of multiple angles of a person to quickly provide evidence



## Verkada's Vehicle Analytics

Quickly search and filter  
to find vehicles of interest



Vehicle Analytics is a powerful edge-based feature that gives users high-quality images of all vehicles identified in the scene. With Verkada's centralized management platform, customers can filter vehicles by date, time, color, and body type.

## Find and Filter Vehicles with Ease

### Vehicle History

- Browse through high-resolution snapshots of vehicles detected in frame
- Save snapshots or easily access associated full-res video

### Investigate Anywhere

- Vehicle Analytics is available from any device and can be accessed from virtually anywhere in the world

### Attribute Filters

- Filter based on a range of attributes, including vehicle color, and body type

### Cross-Camera Tracking

- Easily find similar vehicles of interest across all cameras deployed across all sites
- Create and export playback of multiple angles of a vehicle to quickly provide evidence

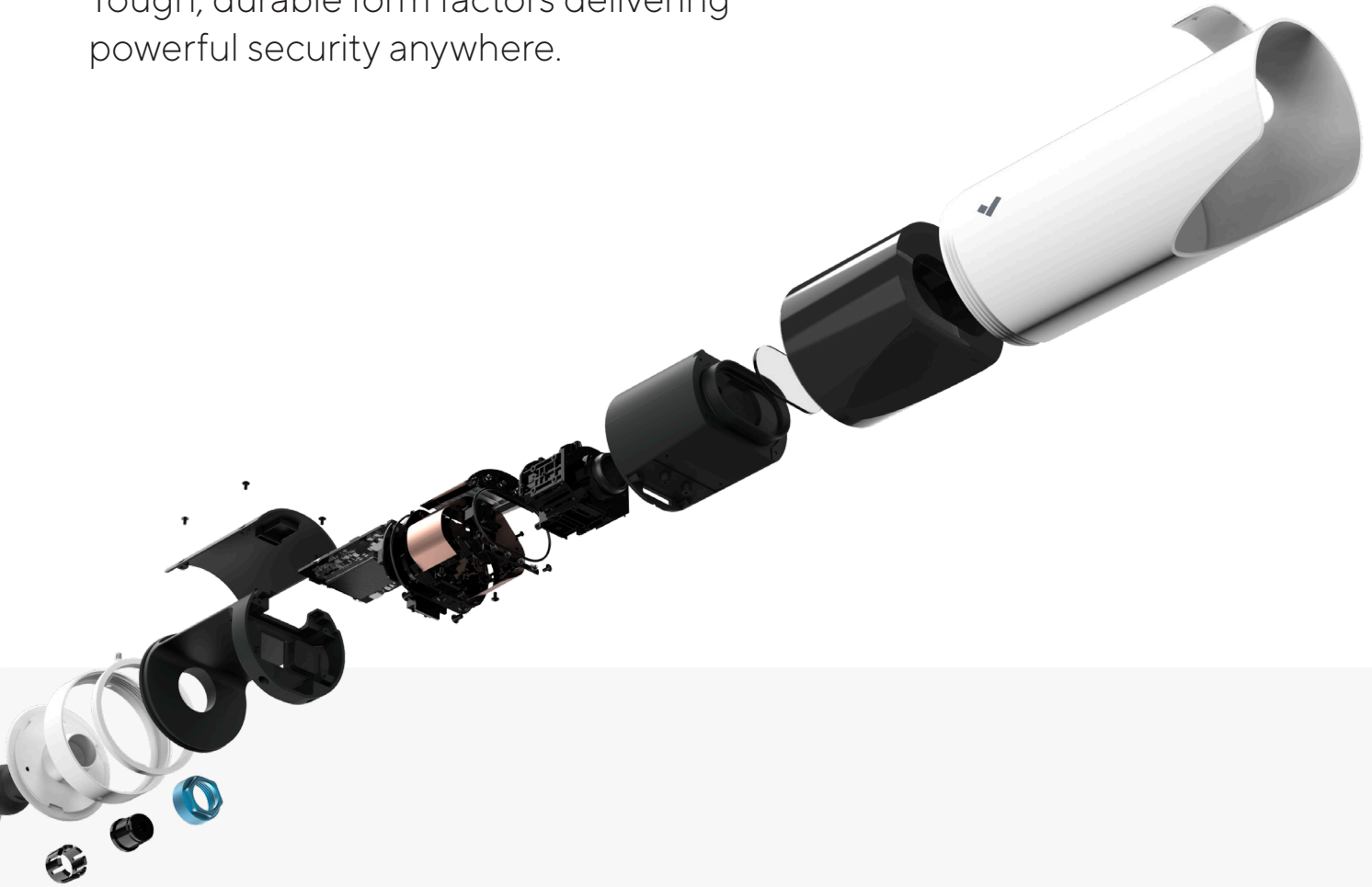
### License Plate Recognition

- Leverage a dual-camera system to provide LPR coverage, monitor a live LPR feed, and search by plate number.
- Receive License Plate of Interest Alerts via SMS or email with an image or link to review the associated footage.



## Verkada's Bullet Series Hardware

Tough, durable form factors delivering powerful security anywhere.



### Built Tough

- IK10-rated CNC aluminum housing for unmatched precision and durability
- Waterproof IP67-rated hermetically sealed lens assembly

### High-Capacity Storage

- Enterprise-grade solid-state drives provide up to 365 days of continuous recording
- Wide range of storage options to ensure your organization meets all compliance requirements

### Uncompromised Image Quality

- High image resolution up to ultra-HD 4K
- Up to 3x optical zoom
- Long-range IR sensors for enhanced nighttime viewing
- Built-in shield to protect lens from obstruction

### Lens Options

- The Bullet Series comes in a wide angle and telephoto models



### Comparison: Wide Angle & Telephoto

## Understand the lens options of Verkada's Bullet Series

#### Wide Angle

#### Telephoto

Focal Length

2.8mm-8mm

8mm-20mm

Image at No Zoom



CB61-E at 2.8mm

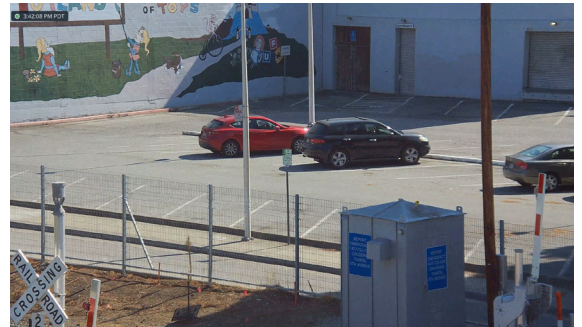


CB61-TE at 8mm

Image at Full Zoom



CB61-E at 8mm



CB61-TE at 20mm



# Bullet Series Tech Specs



CB51-E



CB61-E



CB51-TE



CB61-TE

<b>Sensor Resolution*</b>	5MP (2688 x 1944)	4K (3840 x 2160)	5MP (2688 x 1944)	4K (3840 x 2160)
<b>Lens Type</b>	Optical Zoom			
<b>Image Sensor</b>	1/2.8" Progressive CMOS			
<b>Focal Length</b>	f=2.8mm-8mm		f=8mm-20mm	
<b>Iris</b>	P-Iris			
<b>Audio</b>	-			
<b>Aperture</b>	F1.3-F2.4		F1.5-F2.8	
<b>Field of View (after LDC**)</b>	Horizontal: 41°-95° (91°) Vertical: 40°-59° (57°) Diagonal: 50°-105° (107°)	Horizontal: 42°-95° (83°) Vertical: 25°-48° (45°) Diagonal: 49°-100° (95°)	Horizontal: 15.9°-38.9° (33°) Vertical: 12.2°-29.2° (23°) Diagonal: 18°-46° (41°)	Horizontal: 17°-41.8° (36°) Vertical: 10°-23.8° (21°) Diagonal: 21°-52° (42°)
<b>IR Range</b>	30m / 98ft in low light		50m / 164ft in low light	
<b>Onboard Storage</b>	From 128GB to 2TB	From 384GB to 2TB	From 128GB to 2TB	From 384GB to 2TB
<b>Resistance Rating</b>	IK10, IP67			
<b>Dimensions</b>	Ø: 81 L: 263mm with mountplate			
<b>Operating Specs</b>	Power: 12W (IEEE 802.3af PoE), 20W (IEEE 802.3at PoE) Temperature: -20°C - 50°C (14°F - 122°F), 802.3af / -40°C - 50°C (-40°F - 122°F), 802.3at Humidity: 90%			
<b>Connectivity</b>	10/100Mb RJ-45 Cable Connector for Network/PoE Connection			

\*All our cameras record in "adaptive quality," capturing both standard and high quality streams. Standard quality video is stored up to the amount of retention specified by the customer. The amount of high quality video stored on the camera will depend on the amount of motion detected by the camera over time. To learn more, visit our website: <https://www.verkada.com/blog/recording-in-adaptive-quality/>

\*\*Lens Distortion Correction (LDC) crops the sensor field of view to deliver a rectified, undistorted output image.





## Professional Video Monitoring for Verkada Cameras

### Meet Your Virtual Guard

Verkada offers a 24/7 professional monitoring service to review and respond to events from your Verkada cameras.

Monitoring is provided by three fully redundant, U.S.-based, UL listed central stations with Five Diamond Certification from The Monitoring Association.



### Assess the Situation

- While your site is armed, our agents will review video in real time when any camera detects a person.
- If the person is deemed a threat to people or property, an alarm will be raised.

### Make Contact

- When an alarm is raised, agents will call and send SMS messages to the predetermined contact list.
- If there's a visible emergency in progress, agents will contact local emergency services immediately.

### Take Action

- If a threat is confirmed by someone on the contact list, or if no one can be reached, agents will dispatch local first responders to the site address.
- All events can be reviewed, archived and accessed from Command for incident investigation.

### Alarm License Pricing

Professional monitoring of Verkada cameras is included in the Alarm License. The Alarm License includes access to the cloud-managed Verkada Alarms platform and unlimited video review of person detection events. One Alarm License is required for each unique site address, with no limit on monitored cameras.

### Alarm License Pricing

Product Name	Description	Cost (MSRP) USD
LIC-BA-1Y	1-Year Alarm License	\$1,499
LIC-BA-3Y	3-Year Alarm License	\$3,999
LIC-BA-5Y	5-Year Alarm License	\$5,999
LIC-BA-10Y	10-Year Alarm License	\$11,999



# Ordering Information

## Bullet Series

Product Name	MP*	WDR	Lens	IR	Onboard Storage	Maximum SQ Onboard Retention*	People/ Vehicle Analytics	Cost (MSRP) <sup>USD</sup>
CB51-30E-HW	5.0	✓	Zoom	30m	128GB	30 Days	✓	\$1,399
CB51-60E-HW	5.0	✓	Zoom	30m	256GB	60 Days	✓	\$1,799
CB51-90E-HW	5.0	✓	Zoom	30m	384GB	90 Days	✓	\$2,199
CB51-365E-HW	5.0	✓	Zoom	30m	2TB	365 Days	✓	\$3,599
CB61-30E-HW	8.0	✓	Zoom	30m	384GB	30 Days	✓	\$1,799
CB61-60E-HW	8.0	✓	Zoom	30m	1TB	60 Days	✓	\$2,699
CB61-90E-HW	8.0	✓	Zoom	30m	2TB	90 Days	✓	\$3,599
CB51-30TE-HW	5.0	✓	Zoom	50m	128GB	30 Days	✓	\$1,499
CB51-60TE-HW	5.0	✓	Zoom	50m	256GB	60 Days	✓	\$1,899
CB51-90TE-HW	5.0	✓	Zoom	50m	384GB	90 Days	✓	\$2,299
CB51-365TE-HW	5.0	✓	Zoom	50m	2TB	365 Days	✓	\$3,699
CB61-30TE-HW	8.0	✓	Zoom	50m	384GB	30 Days	✓	\$1,899
CB61-60TE-HW	8.0	✓	Zoom	50m	1TB	60 Days	✓	\$2,799
CB61-90TE-HW	8.0	✓	Zoom	50m	2TB	90 Days	✓	\$3,699

\*All our cameras record in "adaptive quality," capturing both standard and high quality streams. Standard quality video is stored up to the amount of retention specified by the customer. The amount of high quality video stored on the camera will depend on the amount of motion detected by the camera over time. To learn more, visit our website: <https://www.verkada.com/blog/recording-in-adaptive-quality/>



# Ordering Information

## Video Security Cloud License Pricing

Product Name	Description	Cost (MSRP) USD
LIC-1Y	1-Year Camera License	\$199
LIC-3Y	3-Year Camera License	\$549
LIC-5Y	5-Year Camera License	\$899
LIC-10Y	10-Year Camera License	\$1,799

## Viewing Station Pricing

VX52-HW	VX52 Viewing Station	\$499
LIC-VX-1Y	1-Year Viewing Station License	\$499
LIC-VX-3Y	3-Year Viewing Station License	\$1,299
LIC-VX-5Y	5-Year Viewing Station License	\$1,999
LIC-VX-10Y	10-Year Viewing Station License	\$3,999

## Alarm License Pricing

LIC-BA-1Y	1-Year Alarm License	\$1,499
LIC-BA-3Y	3-Year Alarm License	\$3,999
LIC-BA-5Y	5-Year Alarm License	\$5,999
LIC-BA-10Y	10-Year Alarm License	\$11,999