

Premier Elite Series Detectors

Grade 2 Interchangeable Detectors

A revolution in motion sensor technology, the Premier Elite Series will change the way you think about detector design. Utilising an interchangeable PCB chassis system, different detection modules can be exchanged between housings, maximising flexibility and guaranteeing future-proof installations. With a complete range of EN 50131 Grade 2 sensors to choose from, you'll be sure to find a detection solution that meets your needs.

Premier Elite IR High Immunity PIR

- 15m Volumetric Range
- Sealed Optical System
- Temperature Compensation
- Remote Led Disable
- Digital Pulse Count
- EN 50131-2-2 Grade 2

Premier Elite TD Twin Dual Element PIR

- Twin Dual Element Detection
- 15m Volumetric Range
- Sealed Optical System
- Microprocessor Technology
- Digital Temperature Compensation
- EN 50131-2-2 Grade 2

Premier Elite QD Genuine Quad Element PIR

- Genuine Quad Element Detection
- 15m Volumetric Range
- Sealed Optical System
- Microprocessor Technology
- Digital Temperature Compensation
- EN 50131-2-2 Grade 2

Premier Elite DT Dual Technology Detector

- 15m Volumetric PIR & Microwave Range
- Fluorescent Light Protection
- Sealed Optical System
- Microprocessor Technology
- Digital Temperature Compensation
- EN 50131-2-4 Grade 2



Texecom
Designed to Perform

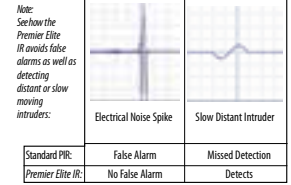
Premier Elite Series - Motion Detectors with Interchangeable PCB Module

Premier Elite IR



EN 50131-2-2 & EN 50131 Grade 2

High immunity PIR with interchangeable electronics module. Multi mode digital pulse count maximises detector performance. ICC™ (Intruder Confirmation Circuitry) ensures false alarm immunity from RF, lightning and mobile phones.

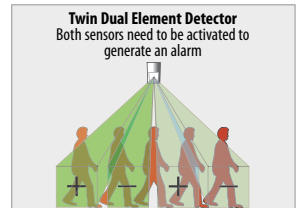


Premier Elite TD



EN 50131-2-2 & EN 50131 Grade 2

Twin dual element PIR with interchangeable electronics module. Two dual element sensors provide exceptional stability, ideal for commercial applications. Features advanced microprocessor design and digital temperature compensation.

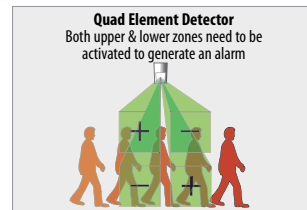


Premier Elite QD



EN 50131-2-2 & EN 50131 Grade 2

Quad element digital PIR with interchangeable electronics module. Genuine quad detection provides additional stability for harsh environments. Features advanced microprocessor design and digital temperature compensation.

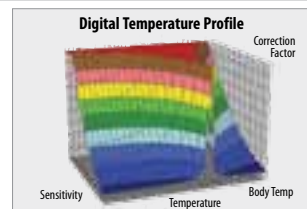


Premier Elite DT



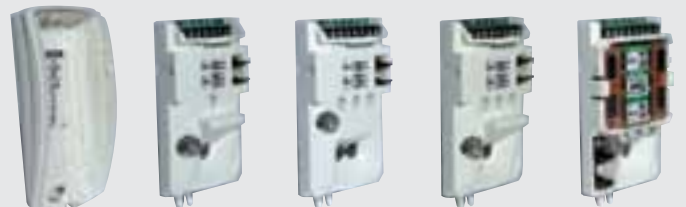
EN 50131-2-4 & EN 50131 Grade 2

Digital dual technology detector with interchangeable electronics module. X-band doppler, adjustable microwave range, digital temperature compensation and advanced signal processing ensures maximum false alarm immunity. CloakWise™ (CW) version also available.



Interchangeable PCB Module

The Premier Elite Series incorporates an innovative interchangeable PCB module system for easy upgrading across the range. By utilising a common backplate component different detection technologies can be simply exchanged, ensuring the correct sensor configuration for any installation requirement.



European Standards

Conforms to European Union (EU) Electro-Magnetic Compatibility (EMC) Directive 89/336/EEC (amended by 92/31/EEC and 93/68/EEC).

Approved to BS EN 55022 Class B and BS EN 50130-4 : 1996.

The CE mark indicates that this product complies with the European requirements for safety, health, environmental and customer protection.

Texecom products are protected by UK and International patents, trademarks and registered design rights.

UK Registered Design Numbers: 3004997, 3004260, 3004261 and 3008616.

Premier Elite is a trademark of Texecom Limited.

© 2010 Texecom Limited. Premier Elite is a trademark of Texecom Limited. (LIT-0165)

Premier Elite AM Series Grade 3 Detectors Also Available



Certificate Number: FM 35285

