









# XPass 2

Outdoor Compact RFID Device



XPass 2 is an outdoor compact RFID device based on Suprema's state-of-the-art RFID technology and multi-hardware platform. With the multi-form factor technology, mullion-type, gangbox-type, and gangbox keypad-type are all supported which provides perfect installation in various environments. XPass 2 also supports dual-frequency (125kHz / 13.56MHz) RFID technology and can read the mobile cards using NFC and BLE, the latest mobile communication technologies. Packed in a rugged IP65/IP67 rated dust & waterproof performance as well as IK08 rated vandal-proof structure, suitable for tough environment and outdoor installation.

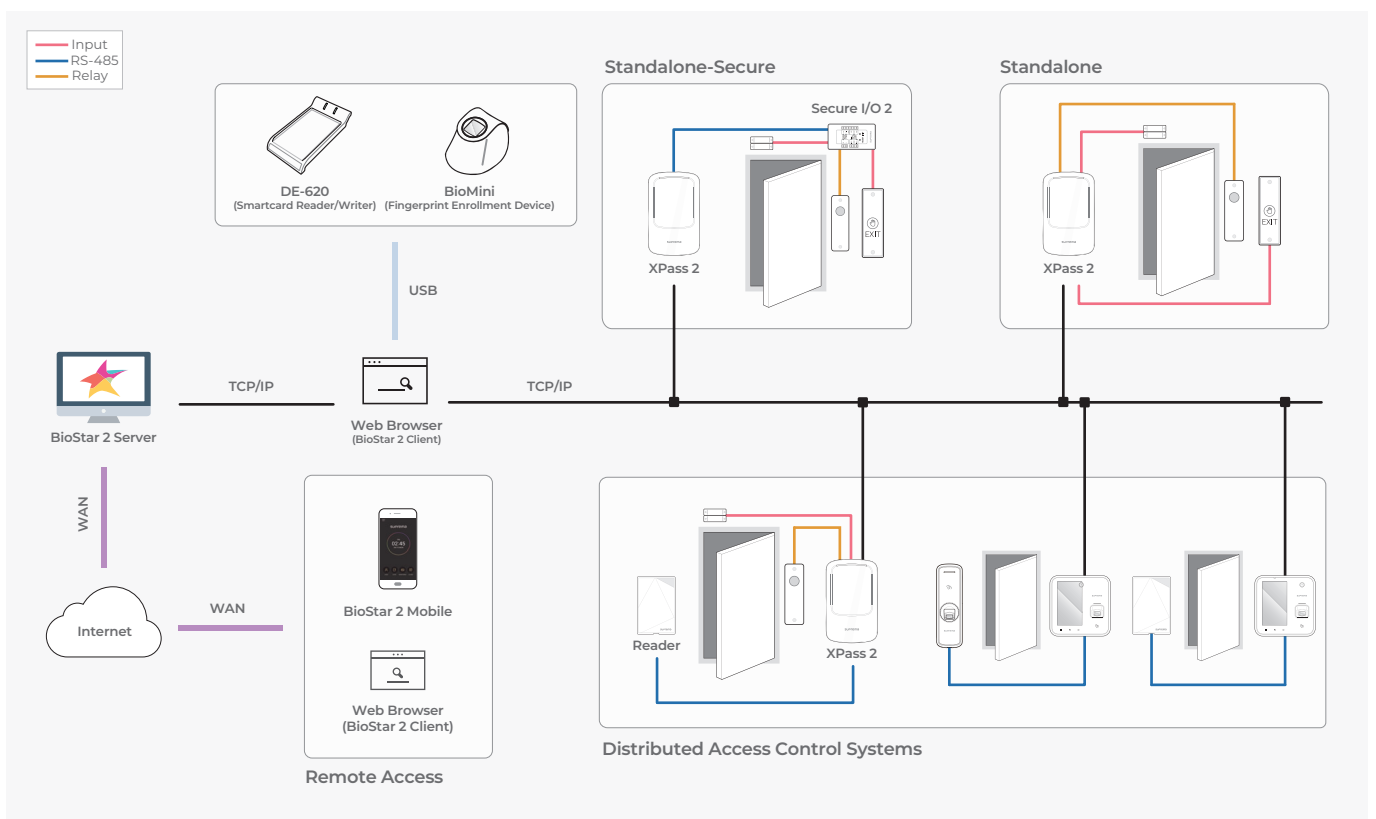
### Features

-  Mobile card (NFC and BLE)
-  Industry standard communication via OSDP
-  Multi-type hardware structure
-  Enhanced security with the Secure Element
-  IP67 - Water and Dust Resistant
-  IK08 - Vandal Resistant
-  Multi-card Reading
-  Power over Ethernet

### Specification

125kHz card compatibility	EM
13.56MHz card compatibility	MIFARE, MIFARE Plus, DESFire/EV1, FeliCa
CPU	1.0GHz
Memory	4GB Flash + 64MB SDRAM
Max. Users	200,000
Max. Text Logs	1,000,000
Mobile card	NFC, BLE
IP rating	IP65, IP67
IK rating	IK08
Installation type	Mullion: XP2-MDPB Gangbox: XP2-GDPB, XP2-GKDPB
Keypad	Not Supported : XP2-MDPB, XP2-GDPB Supported (3x4): XP2-GKDPB
Ethernet	Supported (10/100 Mbps, auto MDI/MDI-X)
RS-485	1ch Master or Slave
Wiegand	1ch In or Out
TTL	2ch Input
Relay	1 Relay
PoE	Supported (IEEE 802.3af compliant)
Sound	Multi-tone buzzer
Operating Temperature	-35 °C ~ 65 °C
Operating Humidity	0% ~ 95%, non-condensing
Power	DC 12V or DC 24V
Dimensions (WxHxD, mm)	48 x 145 x 27: XP2-MDPB 80 x 130 x 25: XP2-GDPB, XP2-GKDPB
Certificates	CE, FCC, KC, RoHS, REACH, WEEE, SIG

### System Configurations



### Suprema Inc.

17F Parkview Tower, 248, Jeongjail-ro, Bundang-gu, Seongnam-si, Gyeonggi-do, 13554, Rep. of KOREA  
 T +82 31 783 4502 F +82 31 783 4503 E sales\_sys@supremainc.com www.supremainc.com

©2019 Suprema Inc. Suprema and identifying product names and numbers herein are registered trademarks of Suprema, Inc. All non-Suprema brands and product names are trademarks or registered trademarks of their respective companies. Product appearance, build status and/or specifications are subject to change without notice. [SUPREMA-AHL-XP2-EN-REV04]