



OMNIS

Flexibility and customization for any solution

Time and Attendance/Workforce Management
Multimedia Workstation

OMNIS makes revolutionary multi-function time & attendance terminal to adapt to meet specific and changing customer requirements as business goals.

With Suprema's latest biometric technology, OMNIS provides class-leading performance through World's best matching performance, uncompromised security, and accuracy.

Take Full Control

Give customers complete control of a terminal and the flexibility to match changing needs with solutions that work across the company /organization. This includes customization of the user interface, management, and monitoring of workflows and enhanced security.

Advantages at a glance

- Large 5" IPS display with rugged capacitive touchscreen
- Open platform for easy integration of a customized user interface
- Powerful platform using a quad-core processor with expansion using a SD slot
- Supports virtually all credentials for enhanced accuracy and flexibility (RFID card, Magnetic stripe card, Mobile card)
- Suprema high-performance fingerprint biometrics
- Versatile interfaces include Wiegand, RS-485, TTL I/O, and relay
- Supports PoE, built-in Wi-Fi, tamper, and 2MP camera

Features



World's Fastest Performance

- Powered by 1GHz Quad-core CPU
- Up to 150,000 matches per second (1:N)
- Data transfer speed up to 5,000 users/min



Improved Accuracy & Security

- Up to 5x enhanced recognition performance
- New advanced LFD(live finger detection) technology
- Improved optical sensor and algorithm



Expanded Capacity

- Max. 500,000 users
- 5mil text logs/50,000 image logs
- Large memory: 1GB RAM+ 8GB Flash



Best-in-class Features

- 5" IPS LCD touchscreen with reinforced glass front
- 2MP wide-angle camera for clear face image logs
- Videophone support/Extensive RF card options



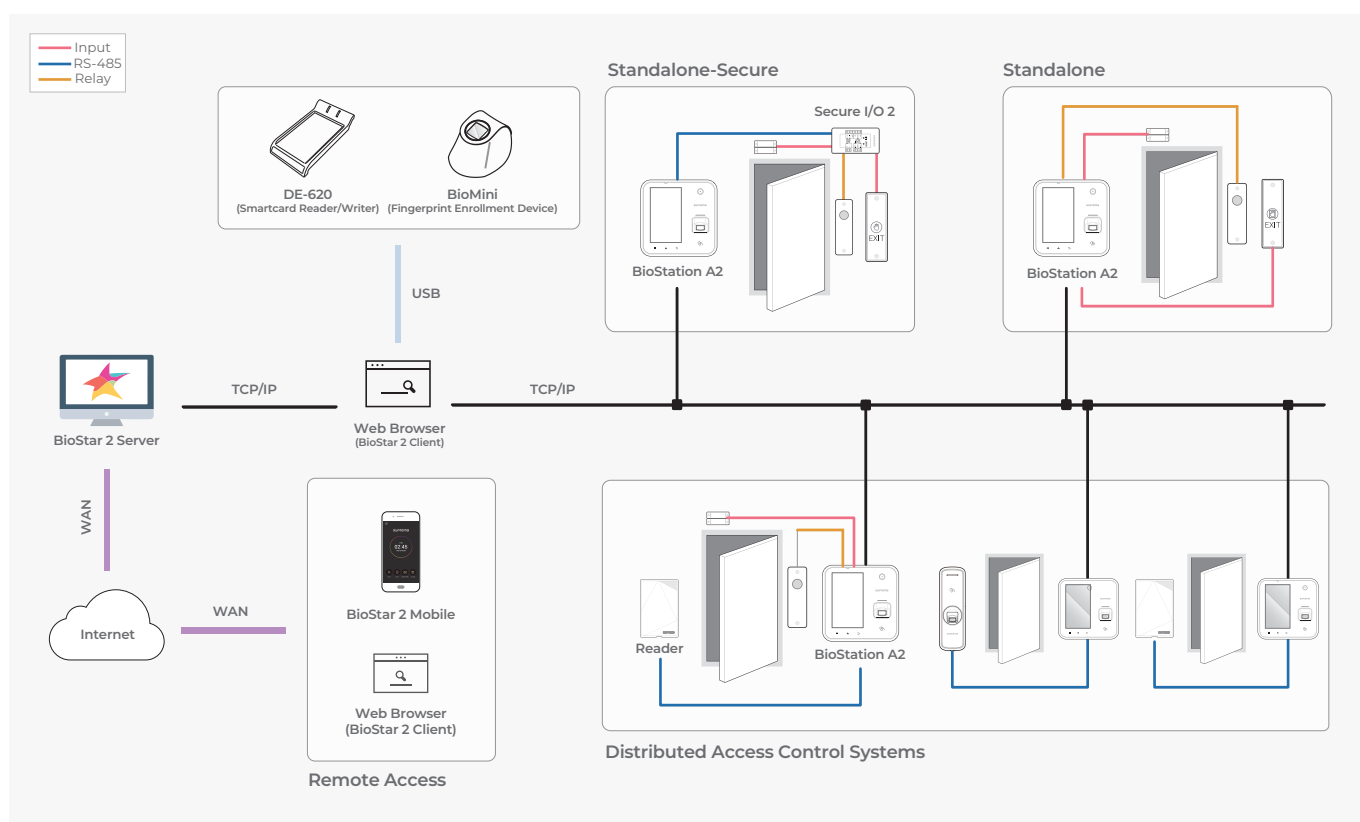
Versatile Interfaces

- TCP/IP, Wi-Fi, PoE(IEEE802.3af)
- USB host/OTG, SD card
- Wiegand, RS485, TTL I/O. relay

Specifications

Biometric	Fingerprint			
Template	SUPREMA/ISO 19794-2/ANSI 378			
Extractor / Matcher	MINEX certified and compliant			
LFD	Supported			
RF Option	OMNIS-E 125 KHz EM	OMNIS-H 125 KHz HID Prox	OMNIS-I 13.56MHz MIFARE MIFARE Plus, DESFire/EV1 FeliCa, iCLASS SE/SR, NFC	OMNIS-M 13.56MHz MIFARE MIFARE Plus, DESFire/EV1 FeliCa, NFC
CPU	1.0 GHz Quad Core			
Memory	1GB RAM + 8GB Flash			
Max. User	500,000 (1:1), 100,000(1:N)			
Max. Template	1000000(1:1), 200,000(1:N)			
Max. Logs	5,000,000(text), 50,000(image)			
LCD	5" IPS LCD with capacitive touchscreen			
LED	Multi-Color LED			
Sound	24 bit/Voice DSP (echo cancelation)			
Wi-Fi	Supported (IEEE 802.11 b/g)			
Interfaces	TCP/IP, RS485, Wiegand, TTL, Relays, USB			
SD Card	MicroSD up to 32GB			
PoE	Supported (IEEE 802.3af compliant)			
Tamper	Supported			
Power	DC 12V			
Operating Temperature	-20°C - 50°C			
Operating Humidity	0% - 80%, non-condensing			
Camera	2 MP wide-angle (1600 x1200)resolution			
Dimension (W x H x D)	155 mm x 155 mm x 40 mm			
Unit Weight	440g			
Certificates	CE, FCC, KC, RoHS, REACH, WEEE			

System Configurations



Suprema America LLC

250 International Pkwy, Suite 134 Lake Mary, FL 32746

T +1 (800) 490-6971

E sales_na@supremainc.com

www.supremainc.com

©2019 Suprema Inc. Suprema and identifying product names and numbers herein are registered trademarks of Suprema, Inc. All non-Suprema brands and product names are trademarks or registered trademarks of their respective companies. Product appearance, build status and/or specifications are subject to change without notice. [SUPREMA-AHL-OMNIS-EN-REV01]