

Features and Benefits

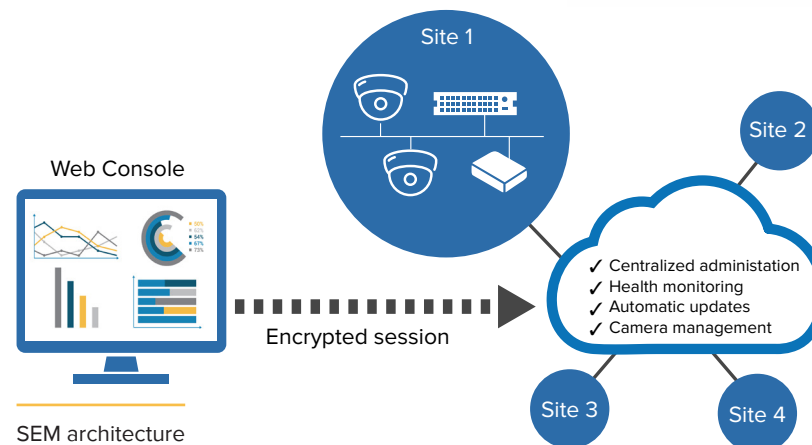
- Maximize uptime:
 - Identify offline devices
 - Monitor system status and resource thresholds
- Lower TCO:
 - Centralized management
 - Push policy and configuration updates
- Reduce risk:
 - Address common attack vectors
 - Enforce password policies
 - Push firmware updates
- Increase compliance:
 - Avoid non-compliant configurations
 - Block unauthorized local changes

Centralized cloud management for multi-site video surveillance deployments

Senstar Enterprise Manager™ (SEM) streamlines IT operations through unified health monitoring and settings management while automating firmware updates for network cameras and Senstar products.

Distributed installations of Symphony™ video management software (VMS), R-Series Network Video Recorders (NVRs), E-Series physical security appliances (PSAs) and Thin Clients are ideally suited for SEM.

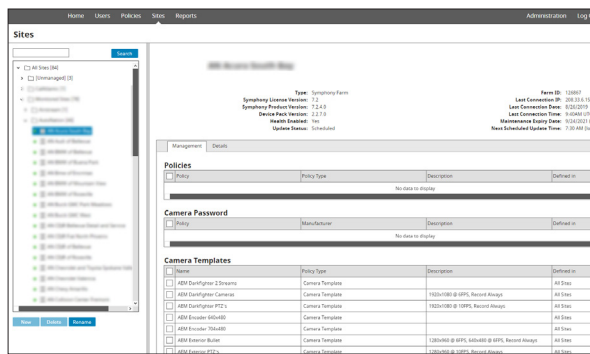
When used in combination with the SEM Bridge*, Enterprise Manager can dramatically reduce the effort required to manage geographically dispersed network cameras.



*Learn more about SEM Bridge on page 2

CENTRALIZED SENSTAR SYMPHONY VMS ADMINISTRATION

SEM enables administrators to manage settings across many servers in distributed network environments. Policy templates standardize commonly configured items while precedence ensures that settings explicitly defined by SEM cannot be changed by local server administrators.



SEM sites and policies

AUTO-UPDATE

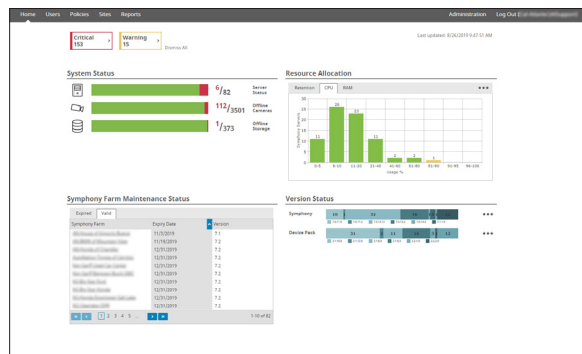
SEM provides a cloud platform for centralized firmware management. SEM reports Senstar Thin Client and Enterprise Bridge firmware versions and can be used to facilitate bulk updates. Using the SEM Bridge, camera firmware can also be updated remotely.

CLOUD BACKUP

Through SEM, Symphony server configurations can be periodically backed up to the cloud. In the event of misconfiguration or catastrophic server failure, settings can be easily restored.

SYSTEM HEALTH DASHBOARD

Availability and health metrics are continually monitored for VMS servers, server farms and cameras. Server CPU, memory and storage utilization are tracked. A web-based dashboard provides on-demand access to deployment-wide system status. Health summary reports can be automatically e-mailed to administrators.



SEM dashboard

SEM BRIDGE

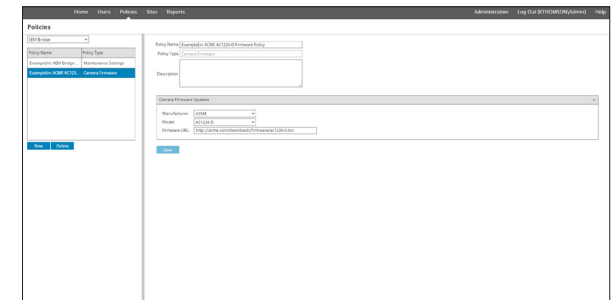
SEM Bridge is a purpose-built hardware device deployed on premises. It works in conjunction with SEM to facilitate advanced camera management. With a compact footprint and PoE support, the SEM Bridge is easily installed. In distributed surveillance networks, typically one SEM Bridge is required per site.



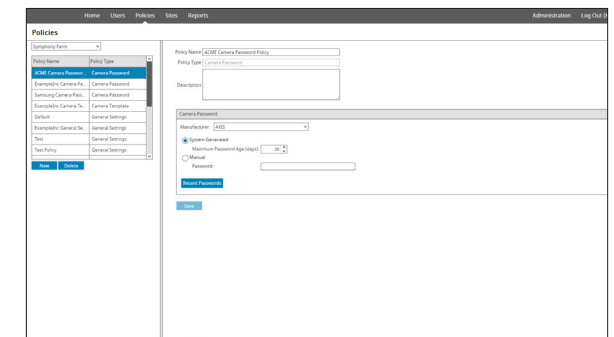
SEM Bridge

CAMERA MANAGEMENT

SEM significantly reduces the effort required to manage distributed network cameras. Using the SEM Bridge, cameras are automatically discovered and inventoried. Camera firmware can be centrally updated from the cloud, without the need for on-site personnel. SEM automates camera password update policies, reducing risk and simplifying the adaption of best practices.



SEM camera password management



SEM camera firmware management

Technical Specifications

SUPPORTED PRODUCTS

Symphony software	Yes
Symphony licenses	Yes
R-Series NVRs	Yes
E-Series PSAs	Yes
Thin Client	Yes
Symphony Camera Mgmt	Yes

SYSTEM HEALTH DASHBOARD

Server & Device Monitoring	Continuous, via health packet updates
Dashboard Metrics	Server & device availability, server CPU, memory, storage, Symphony software & device pack versions, firmware versions
E-Mail Health Summaries	Hourly, daily, weekly

MANAGEMENT

Centralized Management	TLS-encrypted browser interface
Administration	Role-based
System Configuration Backup	Automated, cloud-based
Account Security	Password protection, role-based account security
Cloud Security	<ul style="list-style-type: none"> Outbound connection architecture (customer premises equipment initiated) Firewall friendly SSL encrypted (port 443) SSL Labs "A" rating

RELEASE MANAGEMENT

Software Inventory	All installed Senstar software
Firmware Distribution	Major releases
Scheduling	Immediately or within specified change window

POLICY MANAGEMENT

User Administration	Users & groups, permissions
System Defaults	General settings
Maintenance	Firmware updates and system backups

CAMERA MANAGEMENT

Inventory	Auto-discovery and inventory report
Password Management	Automatic password update policy
Configuration Management	Camera configuration policy templates
Firmware Management	Centralized firmware updates

SEM BRIDGE

SEM Bridge Camera Mgmt	Axis, Bosch, Samsung, Vivotek
Operating System	Linux
USB 2.0 Ports	2
Network	<ul style="list-style-type: none"> 1x 1 Gigabit Ethernet Second network interface supported via USB adapter
Network Protocols	TCP, UDP, IP, HTTP, RTSP, ICMP, ARP, DHCP, DNS, ONVIF
Operating Temperature	0 to 45 °C (32 to 113 °F)
Storage Temperature	-20 to 45° C (-4 to 113 °F)
Dimensions (WxDxH)	175 x 120 x 35 mm (6.8 x 4.7 x 1.4 in)
Weight	600 g (1.3 lb)
Power	Power over Ethernet IEEE 802.3af Class 3 (8.5W max)
Compliance	CE, FCC, RoHs
Mounting Options	Wall, shelf
Warranty	2 years

ORDERING INFORMATION

SEM Bridge	AIM-AEM-A10S
SEM Symphony Server SaaS Subscription	Per server block, 1 to 5 year term
SEM Device SaaS Subscription	Per device block, 1 to 5 year term