

Switch2 - A simple Switch2 system



The Switch2 system is a stand alone access control system meaning that it is not administered centrally. The system comprises of a separate reader and control unit. This makes Switch2 suitable for high security, external doors. The example above shows Switch2 securing the external doors of a leisure club. It is ideal for this application as it is secure and simple to manage.

1

Control unit and power supply

Every door needs a control unit. The unit can be supplied with a 12Vdc power supply.

Switch2 in plastic housing
See Page 30 for details.



2

Reader

1 or 2 readers can be fitted to each door. There is a wide range of readers compatible with Net2 including proximity, magstripe and keypads.

PROXIMITY P50 reader
See Page 31 for details.



3

Exit button

Switch2 systems can be connected to any 'push to make' button to enable egress.

E series exit button
See Page 48 for details



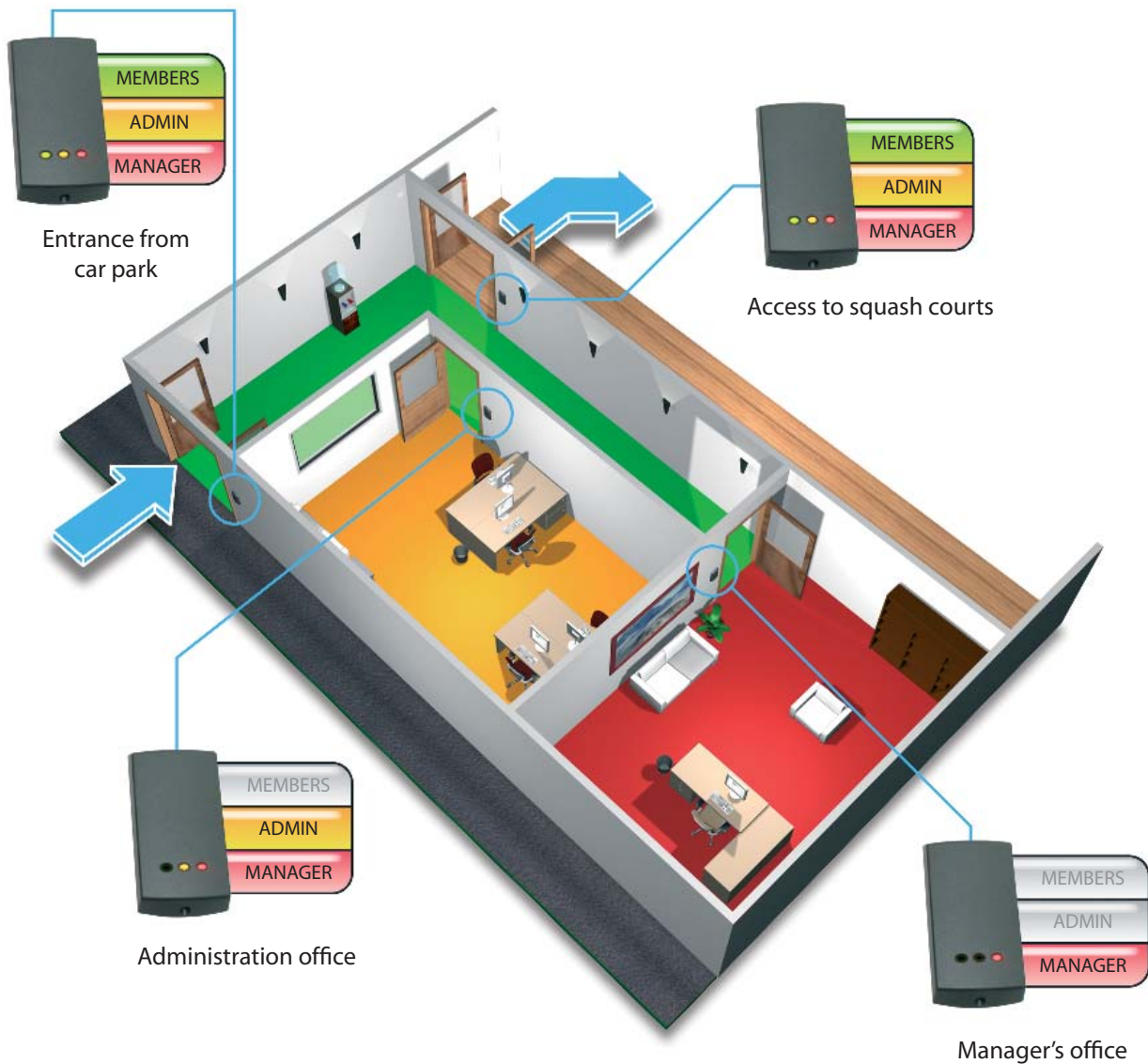
4

Electric Lock

The Switch2 control unit has voltage free relay contacts. This means that it is capable of operating any type of electric lock.

Fail open electric release
See Page 50 for details.





Restricting access by token colour

The diagram above shows a leisure centre with 3 areas secured using Switch2 systems. Different types of users are issued different colours of token.

- Management** - Access all areas
- Administration** - Access to the admin office and squash courts
- Members** - Access to the squash courts only

This simple example demonstrates how multiple Switch2 systems can be configured to provide grouped access rights.

PROXIMITY function card pack
See Page 43 for details.



PROXIMITY green keyfob
See Page 42 for details.



PROXIMITY amber keyfob
See Page 42 for details.



PROXIMITY red keyfob
See Page 42 for details.



Switch2 range - control units



Switch2 control unit
405-321 £80.00



Switch2 control unit and 1A PSU in black plastic housing
242-166 £95.00

Switch2 - readers



PROXIMITY KP50 keypad
355-110 £120.00



PROXIMITY KP75 keypad
375-110 £120.00



PROXIMITY backbox reader black
370-225BL £135.00



PROXIMITY backbox reader white
370-225WT £135.00



CARDLOCK reader satin chrome
409-711SC £110.00



CARDLOCK reader black plastic external
266-898 £60.00

Switch2 - tokens



PROXIMITY 100 card pack green
830-100G £350.00



PROXIMITY 100 keyfob pack green
820-100G £350.00



PROXIMITY function card pack
820-000 £40.00



CARDLOCK 100 card starter pack
850-100 £150.00



CARDLOCK function card pack
877-012 £40.00



PROXIMITY encoding system USB
412-500 £70.00

Compact range - accessories



12V dc 1A power supply in black plastic housing
998-241 £14.00



12V 1.2AH battery for 1A boxed PSU
339-425 £15.00



12V 7AH battery for 2A boxed PSU
862-719 £22.50



1A 12V dc boxed backup power supply
339-424 £49.50



2A 12V dc boxed power supply with mains monitoring
857-693 £84.00



Reader cable 10 core CR9540 10m roll
166-010 £12.00

Switch2 range - readers



PROXIMITY P38 reader
333-110 £99.00



PROXIMITY P50 reader
353-110 £99.00



PROXIMITY P75 reader
373-110 £99.00



PROXIMITY vandal proof reader
568-855 £135.00



PROXIMITY panel mount reader
390-135 £135.00



PROXIMITY metal reader
390-747 £150.00



TOUCHLOCK K38 keypad
331-110 £60.00



TOUCHLOCK K50 keypad
351-110 £60.00



TOUCHLOCK K75 keypad
371-110 £60.00



TOUCHLOCK K38 stainless steel keypad
332-110 £80.00



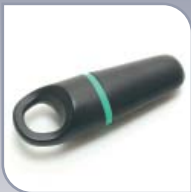
TOUCHLOCK K50 stainless steel keypad
352-110 £80.00



TOUCHLOCK K75 stainless steel keypad
372-110 £80.00



PROXIMITY enrolment card plus for additional site
542-990 £50.00



Unencoded PROXIMITY keyfob green
202-325G £2.50



Unencoded PROXIMITY card green
202-668G £2.50



Unencoded PROXIMITY Watchprox, silver
202-782SL £2.50



Unencoded PROXIMITY ISO card
202-630 £4.00

Exit buttons



Exit button E38
336-310 £25.00



Exit button E50
356-310 £25.00



Exit button E75
376-310 £25.00



Exit button E75 with screw connector
376-320 £25.00