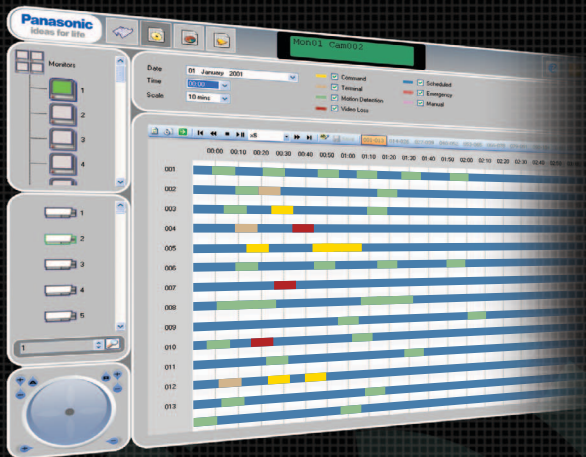
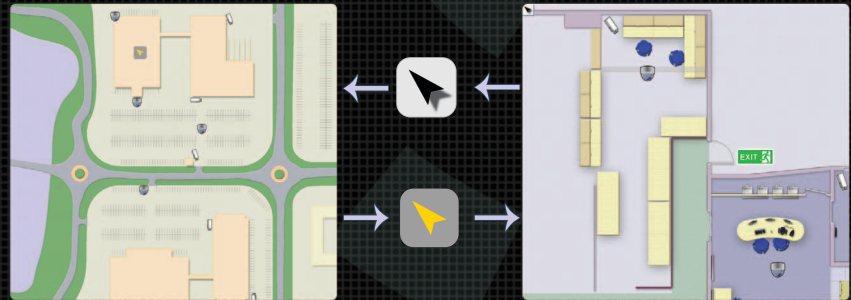


Panasonic WINICS650 control software integrates Panasonic System Solutions strong product range in an easy to use, install and maintain software package. Control of the WJ-SX650 matrix and WJ-HD316A digital recorder can be taken by the software giving simple navigation of live and recorded images.

Simple Navigation

Navigation through the WINICS650 control software is intuitive and quick to use. With the help of panning maps and correctly placed hotspots, operators can move seamlessly from one camera to another across multiple maps.



Unique Recording Grid

A unique recording grid allows stored images to be reviewed efficiently and with ease. A graphical on screen display shows the recording type (schedule, motion detection, terminal etc.) each represented by a different coloured bar.

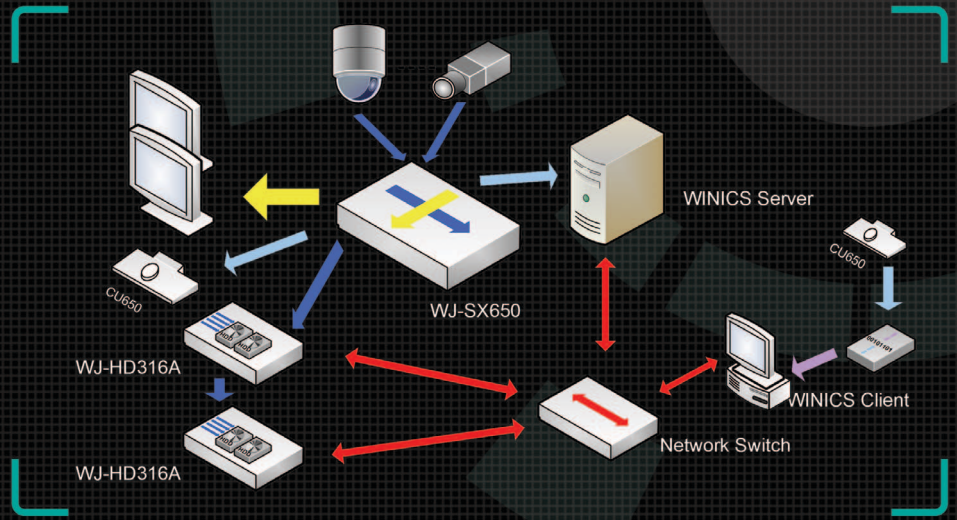
Controller Integration

All functions available from the WV-CU650 desktop controller are available from WINICS650 thanks to a transparent link from desktop controller to matrix via the WINICS650 system. Communication is through the WINICS network removing the need for a separate data cable for the controller from the matrix.



System Example

This example shows WINICS650 installed on a server with a separate client PC; it is also possible to run the client and server on the same PC. A WINICS650 system allows WINICS650 clients and CU650 controllers to operate a matrix simultaneously to suit the level of control required at each operator position.



System Features

Easy Install

Configuration is performed from the SX650 Admin Console, a familiar program to many installers. A few simple settings are entered into the WINICS650 software and the system is ready to use.

Mapping Support

Drag and drop camera icons and hot spots are simply placed on the map in the configuration tool and saved. The next time the client starts the new camera locations are applied.

Database Maintenance

A quick database backup feature gives the option for Panasonic S³ to support if difficulties occur. Also the database can easily be restored to an earlier archived version.

Reporting

Full audit and alarm reports are stored on the WINICS650 server. User operations such as camera and monitor selections are stored in the database. A report can be generated for a given operator, computer and time frame.



System Requirements

	Server	Client / Server
CPU	2.4GHz	2.4GHz
RAM	256 MB	512 MB
Hard Disk	40GB	40GB
Monitor	800x600 or greater	1152x864 or greater
Network	10/100 Base-T	10/100 Base-T
OS	Windows XP (SP2) / 2003	Windows XP (SP2) / Vista-Bus