

# ePAC Spindle Lock™

The ePAC Spindle Lock is an electronic lock suited for all cabinets and lockers with a door thickness of up to 20mm. The lock has an integrated standard lever lock and is designed for easy and efficient installation.

With an in-built proximity reader, the ePAC Spindle Lock is designed to ease the task of key management. Easy to administer using a programming card, the Spindle Lock reads KeyPAC® (125KHz), PAC® (153KHz) or MiFare (13.56MHz) proximity technology.

Simple to use by presenting an authorised card or token, the operating lever can be turned left or right, and the locker door is opened.

The ePAC Spindle Lock can be installed with the lever on the right or the left as required and an additional screw ensures that the lock is fixed into place. The lock is powered through a conventional 3.6V AA lithium battery, providing up to 50,000 operations. With an externally accessible battery compartment, change of the battery is easy with the use of a special tool supplied.

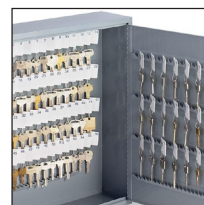
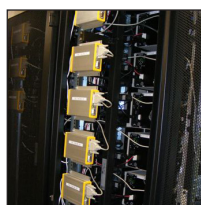
The Spindle Lock also has in-built wireless capability and can easily be integrated into a PAC® electronic access control system offering a reliable and cost effective add-on to existing PAC systems and an easy upgrade option from standalone access control. Cards and tokens can be managed centrally via PAC's software allowing keyholders (employees, club members or visitors) to be managed via access groups or time profiles with relevant access authority levels. This allows for lockers to be allocated specifically to a keyholder or kept free for general use.

## Key Features:

- Programmable electronic spindle lock
- Available as Onepro - KeyPAC® (125KHz) & PAC® (153KHz) or MiFare® (13.56Mhz) proximity technology
- Up to 200 keyholders in standalone mode
- To preserve battery life, a 'wake up' button is used before presenting a card or token
- Available as standalone or can be integrated into PAC SecureNet™, PAC EasiNet Residential™ or iPAC™ systems
- Suitable for installation horizontally or vertically with the option of left or right hand doors
- Supplied with three standard cams and battery change tool
- Suitable for wooden, steel and aluminium cabinet doors
- Fits all doors with a thickness of up to 20mm
- No cabling required
- Audible low battery warning signal in standalone mode and low battery warning event log when linked to iPAC, PAC SecureNet or PAC EasiNet Residential systems
- Replaceable Lithium 3.6V AA battery with battery life of up to 50,000 openings
- Service card offers compatibility with our complete ePAC range

## Typical Applications:

- Server room cabinets
- Hospital/medical cabinets
- Secure office cabinets
- Work or sports lockers
- Key cabinets
- Storerooms

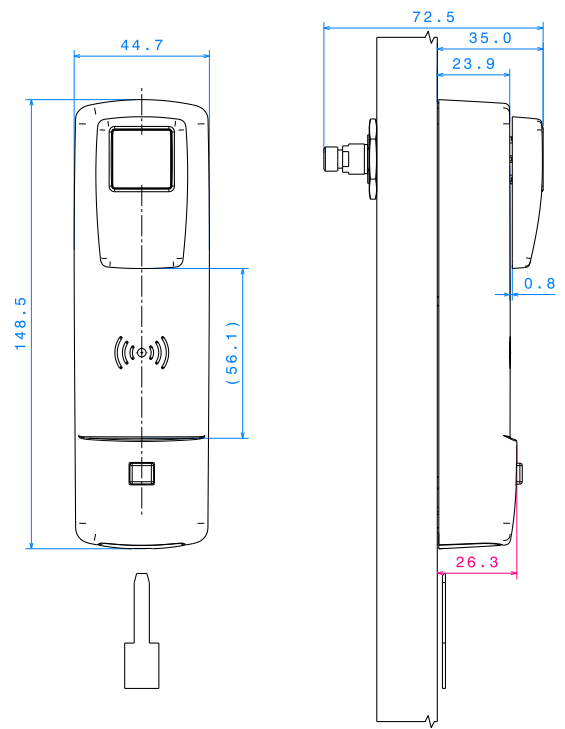


## Features & Specification

Description	Oneprox™ Spindle Lock Mifare Spindle Lock
ID Technology	KeyPAC (125KHz) proximity technology PAC (153KHz) proximity technology MiFare (13,56 MHz) proximity technology - MiFare Classic, MiFare DESFire, MiFare DESFire EV1, serial code only
Dimensions	44.7 x 148.5 x 35.0 mm
Maximum Read Range	Up to 20mm
Environment	Internal
Operating Temperature	-20°C to 65°C
Storage Temperature	-40°C to 85°C
Power Supply	1 x Type AA 3.6 V Lithium
Battery Life	up to 50,000 openings
Audiovisual Indication	Red & Green LED's with audible sounder
Material	ABS (thermoplastic)
Certifications	DIN EN 300330-1 Issue: 2006-08 DIN EN 300330-2 Issue: 2006-08 OENORM EN 301489-1 V 1.5.1, 2005-03-01 OENORM EN 301489-3 V 1.4.1, 2003-01-01 RL 1999/5/EG, RegTP Vfg. Nr. 30/2006

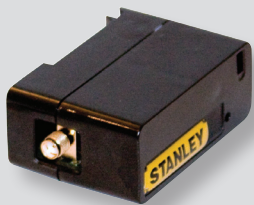
## Ordering Information

Please contact PAC Customer Services for more information



## Required for an Integrated solution:

### 40252 Wireless Module (without Antenna)



- DIN rail fitting
- 8-20V DC
- Simple one-touch, one to one pairing with ePAC Spindle Lock
- Simple to wire and powered by PAC 512 controllers
- H: 65 x W: 50 x D: 40mm

### 40253 Antenna 868 SMA Type-1, Short

- For use with Wireless Module
- Range up to 8m



### 40254 Antenna 868 SMA Type-1, Long

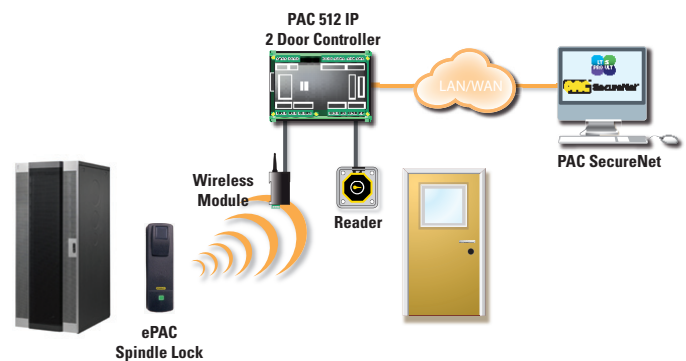
- For use with Wireless Module
- Range up to 20m



## Key Features - Integrating with PAC:

- Up to 75,000 keyholders when linked with PAC SecureNet™ or PAC EasiNet Residential™
- Up to 1,100 keyholders when linked with iPAC
- Compatible with iPAC and PAC 500 Series controllers
- Wireless Module can be mounted up to 8m from the ePAC Spindle Lock (dependant on building environment)
- When used with PAC access control software, the ePAC Spindle Lock offers full door control and monitoring, ie. keyholder information, time profiles, access groups, passage mode, door status and area management etc.
- If communication is lost between the ePAC Spindle Lock and Wireless Module, the lock will automatically revert to standalone mode using the internally pre-programmed keyholder list
- Encrypted communication between the ePAC Spindle Lock and Wireless Module for secure communication

## Typical Integrated Wireless Solution



## STANLEY Security Products

PAC Access Control, 1 Park Gate Close, Bredbury, Stockport, Cheshire, SK6 2SZ  
Tel: +44 (0) 161 406 3400 Fax: +44 (0) 161 406 8984 Email: customerservices@stanleysecurityproducts.co.uk

[www.stanleysecurityproducts.com](http://www.stanleysecurityproducts.com)

Stanley Security Products is a sales channel of Stanley Security Solutions

Stanley Security Solutions Ltd. Registered in England and Wales No. 181585. Registered Office: Stanley House, Bramble Road, Swindon, Wiltshire SN2 8ER. VAT No. 232 2446 95

All reasonable care has been taken to ensure that the information contained in this publication is accurate as at the date of printing. Such information is nevertheless liable to variation in the event of changes occurring subsequent to the date of printing in the product services or statements referred to in this publication.