

# Evolution 05 and 12

## 360° Stainless Steel Cameras

The next step in 360° total situational awareness

### 5MP or 12MP sensor and no moving parts

#### 5MP sensor

- Up to 30 fps video stream at 1 MP and ¼ MP
- 0.2 lux minimum illumination and electronic WDR

#### 12MP high-resolution sensor

- Up to 30 fps at 2.0 MP
- 0.1 lux minimum illumination
- Constant 360° surveillance with no blind spots
- No moving parts, no maintenance and silent operation
- PoE or 12 VDC powered
- 3-years warranty

### Advanced features

- Local SD card slot for event recording
- Configurable privacy regions
- Polygonal video motion detection regions
- Local alarm digital input and output
- Audio microphone input

### Uniquely suited for demanding environments

- Electropolished marine grade 316 stainless steel
- Withstands high pressure washes and corrosion
- IP66, IP67, IP68, IP69K and NEMA Type 4X & 6P rated for dust and water protection
- IK10+ rated for vandalism protection
- Certified by NSF to NSF/ANSI Standard 169
- HCV EU marked for HACCP environments
- Surface and pendant mounting options available with matching stainless steel accessories

### Applications

- Food and processing areas
- Industrial and chemical plants
- Vehicle wash stations
- Ports and marine applications
- High end architecture



Model	EVO-05-SS2	EVO-12-SS2
-------	------------	------------

### Extensive VMS/NVR platform integration with Oncam SDK

- Market leading Oncam 3D dewarping software
- Full live and retrospective dewarping available
- Camera features are accessible through VMS platforms
- Simultaneous multiple video streams
- 10x digital zoom capability through client-side dewarping
- H.264 / MJPEG streaming with multiple quality levels
- Optimizes bandwidth and storage utilization
- Intuitive web-based interface for viewing and configuration
- Supported by major VMS / NVR systems
- ONVIF profile S conformant

# Evolution 05 and 12

## 360° Stainless Steel Cameras



The next step in 360° total situational awareness

General		
Model	EVO-05-SS2	EVO-12-SS2
Lens Field of View	180° Horizontal, 168° Vertical	180° Horizontal, 180° Vertical
Image Sensor	5 MP, 2592 H x 1944 V pixels and 1/2.5-inch CMOS Sensor	12.4 MP, 4072 H x 3046 V pixels and 1/2.3-inch Sony CMOS Sensor
Lens	185° / F2.0	
Minimum Illumination	0.2 lux = 50 IRE F/2.0	0.1 lux = 50 IRE F/2.0
Frame Rate	30 fps for 1 MP and ¼ MP resolution 15 fps for 2 MP resolution 10 fps for 4 MP full resolution	30 fps for 2MP and ¼ MP resolution 14 fps for 6, and 4 MP resolution 12 fps for 9.6MP resolution
Video Motion Detection	8 configurable polygonal regions	
External Input	1x contact input	
External Output	1x contact output	
Security	Configurable password protection	
Advanced Event Management	Triggered by motion, external input or HTTP event, result configurable, external output, FTP/SMTP upload and local recording	
Networking	TCP/IP, HTTP, DHCP, DNS, NTP, FTP, SMTP and RSTP	
Privacy	10 configurable privacy regions	
SD Card	Built-in SD card slot. Supports cards up to 128 GB capacity. Speed class 10 or higher required.	
Audio Connections	Audio In through 3.5 mm jack, RTSP using G711 codec or ONVIF S	
Audio Input Level	Mic input level range is approximately 5 mV to 50 mV	
Analog Video Out	Test port for production, not available in normal operation	
White Balance Range	Auto White Balance (Range = approximately 2500 K ~ 8000 K)	

Video		
Model	EVO-05-SS2	EVO-12-SS2
Video Stream 1 Codec	H.264 High, Level 5 / MJPEG (streams configurable)	H.264 in 9.6 MP, 6 MP, 4 MP, 2 MP
Video Stream 1 Compression Level	Multi-levels of compression and frame rate adjustment	
Video Stream 1 Pixel Resolution	Fisheyes at: 4 MP (2144 x 1944), 2 MP (1488 x 1360), 1 MP (1056 x 960), ¼ MP (528 x 480)	Fisheyes at: 9.6 MP (3200 x 3000), 6 MP (2528 x 2376), 4 MP (2080 x 1960), 2 MP (1472 x 1384)
Video Stream 2 Codec	H.264 High, Level 5 / MJPEG (streams configurable)	H.264 in ¼ MP
Video Stream 2 Compression Level	Multi-levels of compression and frame rate adjustment	
Video Stream 2 Pixel Resolution	Fisheyes at: 4 MP (2144 x 1944), 2 MP (1488 x 1360), 1 MP (1056 x 960), ¼ MP (528 x 480)	Fisheyes at: ¼ MP (544 x 512)
Video Stream 3 Codec	MJPEG at ¼ MP	
Video Stream 3 Compression Level	Multi-levels of compression and frame rate adjustment	
Video Stream 3 Pixel Resolution	Fisheye at: ¼ MP (528 x 480)	Fisheyes at: ¼ MP (544 x 512)
* VCam Stream 4, 5, 6, 7 Codec	N/A	H.264
* VCam Stream 4, 5, 6, 7 Compression Level	N/A	Multi-levels of compression and frame rate adjustment
* VCam Stream 4, 5, 6, 7 Pixel Resolution	N/A	4x independent onboard dewarped VCams at 1 MP (1280 x 720), ¼ MP (640 x 480)
Maximum Frame Rate	30 fps	
Image Control	Settings: brightness / contrast / saturation / exposure compensation, compression quality and wall / ceiling / table mount	
Image Enhancement	Electronic WDR 60dB	
PTZ Functionality	10x zoom with Oncam 3D client-side dewarping software	
VMS / NVR Support	Contact Oncam Sales for the supported VMS / NVR list	
Web Browser Compatibility	Internet Explorer 9, Edge 25, Firefox 23 and Chrome 29 or above. Plug-in required for full functionality	
Unicast	Up to 20 simultaneous users depending on the resolution settings	
Multicast	Supported for H.264 main camera stream	
Bit Rate Control	Variable Bit Rate Controls, Constant Bit Rate Control and Constant Quality Control	Constant Bit Rate Control and Constant Quality Control

\* Video Stream 2 and VCams cannot be used simultaneously.

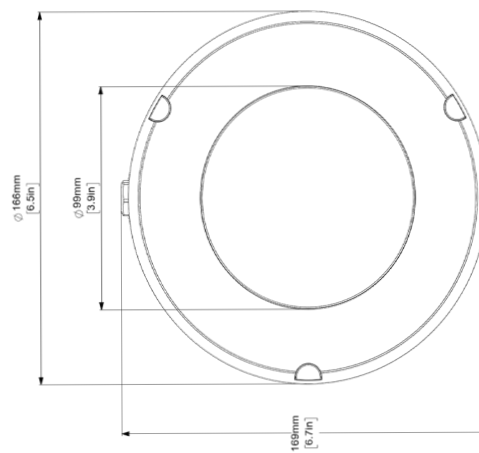
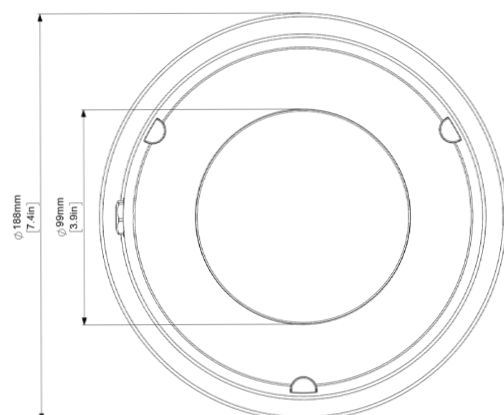
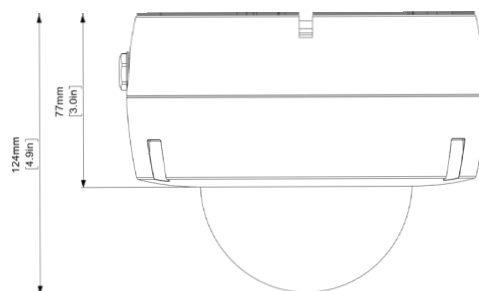
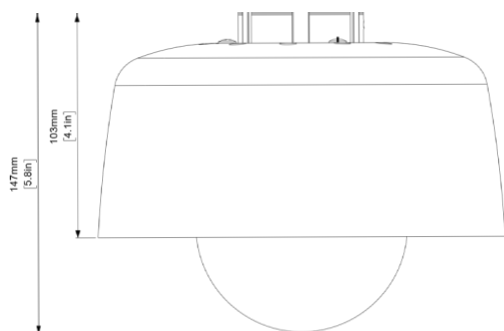
# Evolution 05 and 12

## 360° Stainless Steel Cameras



The next step in 360° total situational awareness

Model	EVO-05-SS2	EVO-12-SSK2
<b>Electrical</b>		
Ports	RJ45 2.1mm DC Input jack 6-pin 1.5mm Phoenix for external I/O BNC for test video output	
Network Cable Type	CAT5 or better for 100Base-TX	CAT5 or better for 1000Base-TX
Power Input	12 VDC, 1.0 A (min) LPS or NEC Class 2 power supply or Power over Ethernet (PoE), IEEE standard 802.3af	
Power Consumption (maximum)	4.05 W (PoE 48 VDC) / 3.19 W (DC 12 VDC)	8.4 W (PoE 48 VDC) / 7.32 W (DC 12 VDC)
<b>Mechanical</b>		
Camera Mount	Surface or Pendant mount	
Weight	Surface	5.00 kg (11.02 lbs)
	Pendant	5.795 kg (12.77 lbs)
Dimensions (D x W x H)	Surface	124 x 166 x 169 mm (4.9x 6.5 x 6.7 in.)
	Pendant	147 x 188 x 188 mm (5.8 x 7.4 x 7.4 in.)
Housing Material	Electropolished marine grade 316 stainless steel with polymer bubble	
<b>Environmental</b>		
Operating Temperature Range	-40 to +55°C (-40 to +131°F)	
Ingress Protection	IP66, IP67, IP68 (2m, 30mins), IP69K, NEMA Type 4X & 6P	
Impact Resistance	IK10+	
Food Safety and Hygiene	NSF/ANSI Standard 169, HCV EU	
<b>Certifications</b>		
IEEE802.3af, CE, AS/NZS CISPR 22:2009+A1:2010, CISPR 24:2010 (Class A), FCC, ICES-003, KCC, CU, RCM, SASO, UL 60950-1(ed.2), CAN/CSA C22.2 No. 60950-1-07, RoHS, REACH, IP66, IP67, IP68, IP69K, IK10+, NSF/ANSI Standard 169, HCV EU, NEMA Type 4X & 6P		



# Evolution 05 and 12

## 360° Stainless Steel Cameras


The next step in 360° total situational awareness




### Accessories

#### Surface Mounting

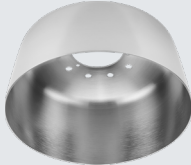
##### Surface Mounting Option

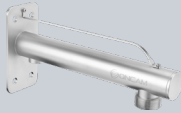
Stainless Steel Conduit Adaptor	OBE-20-SCA Weight 0.240kg (0.53 lb)	
---------------------------------	---	---


#### Pendant Mounting

Stainless Steel Pendant Mount Adaptor	OBE-20-SPM Weight 0.225kg (0.495 lb)	 Mini Spanner (Included)
---------------------------------------	--	---


#### Pendant Mounting Options

Stainless Steel Environmental Shield	OBE-20-SES Weight 0.570kg (1.26 lb)	 Hook Spanner (Included)
--------------------------------------	---	--


Stainless Steel Pendant Arm	OBE-20-SPA Weight 2.065kg (4.55 lb)	
-----------------------------	---	---

Stainless Steel Pendant Arm Corner Mount	OBE-20-SPC * Weight 1.655kg (3.65 lb)	
--	---	---

\* Stainless Steel Pendant Arm (OBE-20-SPA) Required

Stainless Steel Pendant Arm Pole Mount	OBE-20-SPP * Weight 0.890kg (1.96 lb)	
--	---	---

\* Stainless Steel Pendant Arm (OBE-20-SPA) Required

Stainless Steel Pipe Thread Adaptor	OBE-20-PTA Weight 0.360kg (0.79 lb)	
-------------------------------------	---	---

# Evolution 05 and 12

## 360° Stainless Steel Cameras

The next step in 360° total situational awareness



### Camera Configurations

#### Surface Mounting

Stainless Steel Camera - EVO-05-SS2/ EVO-12-SS2



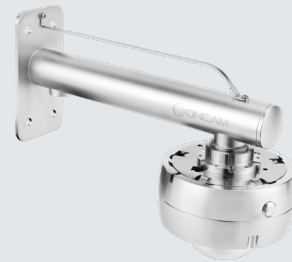
#### Surface Mounting (Conduit)

Stainless Steel Conduit Adaptor - OBE-20-SCA

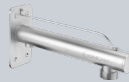


#### Pendant Mount (Wall)

Stainless Steel Pendant Mount Adapter - OBE-20-SPM

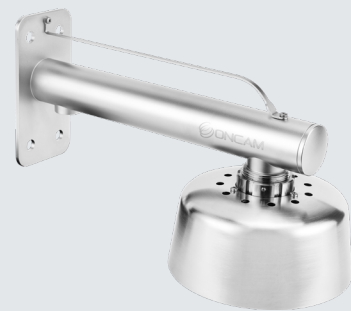


Stainless Steel Pendant arm - OBE-20-SPA

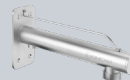


#### Pendant Mount With Sunshield (Wall)

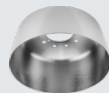
Stainless Steel Pendant Mount Adapter - OBE-20-SPM



Stainless Steel Pendant arm - OBE-20-SPA

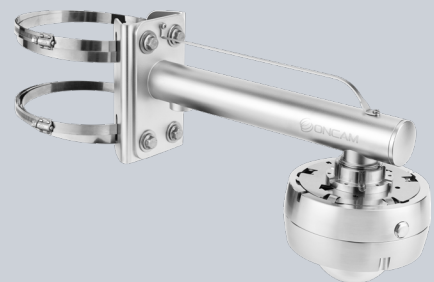
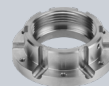


Stainless Steel Environmental Shield - OBE-20-SES



#### Pendant Mount (Pole)

Stainless Steel Pendant Mount Adapter - OBE-20-SPM



Stainless Steel Pendant arm - OBE-20-SPA



Stainless Steel Pendant Arm Pole Mount - OBE-20-SPP



# Evolution 05 and 12

## 360° Stainless Steel Cameras



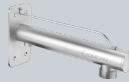
The next step in 360° total situational awareness

### Pendant Mount With Sunshield (Pole)

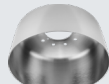
Stainless Steel Pendant Mount Adapter - OBE-20-SPM



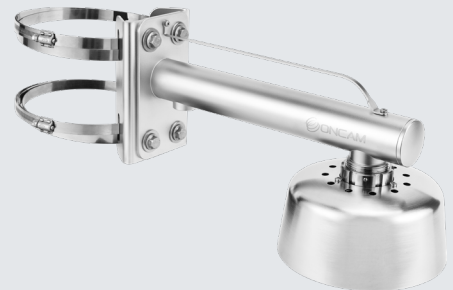
Stainless Steel Pendant arm - OBE-20-SPA



Stainless Steel Environmental Shield - OBE-20-SES



Stainless Steel Pendant Arm Pole Mount - OBE-20-SPP

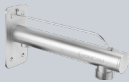


### Pendant Mount (Corner)

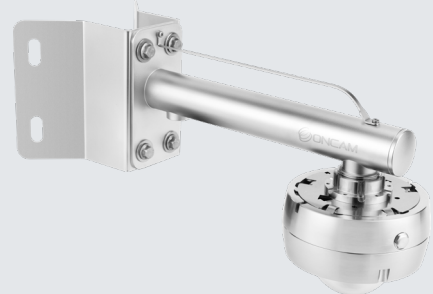
Stainless Steel Pendant Mount Adapter - OBE-20-SPM



Stainless Steel Pendant arm - OBE-20-SPA

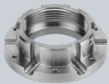


Stainless Steel Pendant Arm Corner Mount - OBE-20-SPC

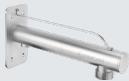


### Pendant Mount With Sunshield (Corner)

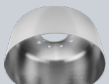
Stainless Steel Pendant Mount Adapter - OBE-20-SPM



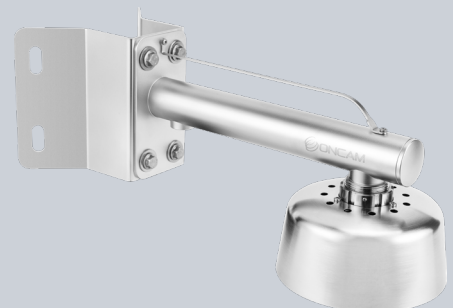
Stainless Steel Pendant arm - OBE-20-SPA



Stainless Steel Environmental Shield - OBE-20-SES



Stainless Steel Pendant Arm Corner Mount - OBE-20-SPC



© Copyright 2019 ONVU Technologies AG. All rights reserved.  
Oncam is a trading name of ONVU Technologies AG. Subject to change without notice.

EVO-XX-Sxx-26\_2019.02

Oncam Global Ltd. | Building 4, Chiswick Park | 566 Chiswick High Road | London, W4 5YE | United Kingdom  
oncamgrandeye.com | + 44 (0) 20 7371 6640 | sales@oncamgrandeye.com