

VPort 704-T

4-slot modular industrial multi-service gateway



- > Hot-swappable capability for versatile modules
- > -40 to 75°C operating temperature
- > High MTBF with passive backplane and fanless design
- > Automatically detect and configure the module's IP address
- > Moxa Turbo Ring supported (recovery time < 50 ms)



16

IP Surveillance > VPort 704-T

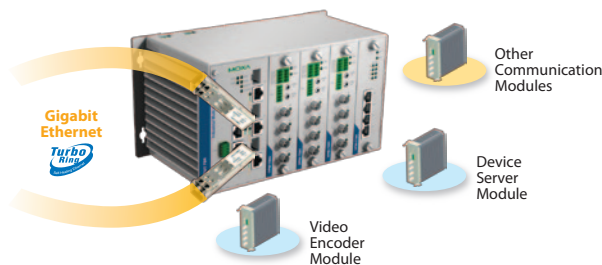
Introduction

The VPort 704-T series modular industrial multi-service gateways come with 3 built-in Gigabit ports, 3 10/100 Mbps fast Ethernet ports, and 4 slots for installing Ethernet, serial, or power interface modules. The 4 slots accept a versatile assortment of communications modules, including a serial-to-Ethernet module (VPM-7704), and other modules that adhere to the design rules for VPort 704-T modules. The modular design turns the VPort 704-T into an extremely versatile communications interface, and makes the VPort 704-T particularly well suited for use at field sites.

The VPort 704-T's -40 to 75°C wide operating temperature, metal housing, passive backplane, and fanless design make it particularly well suited for harsh industrial environments and mission-critical applications, including oil and gas, trackside, and city traffic monitoring systems.

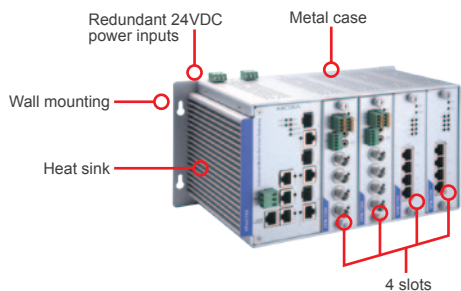
Modular, Integrated Solutions

The VPort 704-T industrial multi-service gateway can be used with a variety of modules for field site device communication applications.



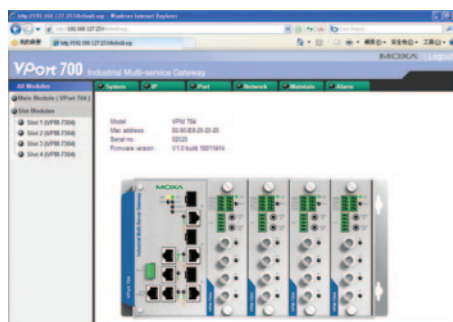
Rugged Design

- Passive backplane and fanless design for high MTBF
- Hot swappable for low MTBR
- -40 to 75°C wide operating temperature
- Rugged aluminum housing
- Redundant 24 VDC power inputs
- CE, FCC, UL508 compliance



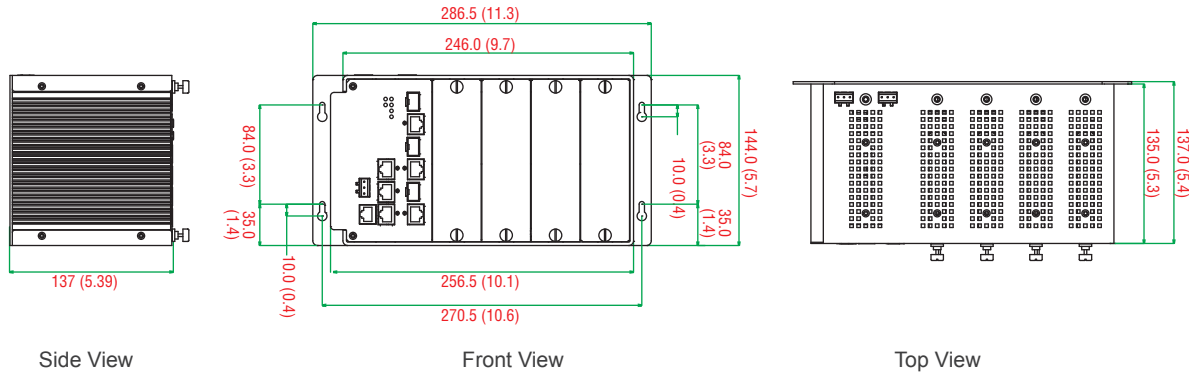
Easy to Use

- Visual GUI for system and connection status
- Easy IP configuration
- One web console for configuring all modules
- System diagnosis for easy maintenance



Dimensions

Unit: mm (inch)



Specifications

Technology

Standards:

- IEEE 802.3 for 10BaseT
- IEEE 802.3u for 100BaseT(X) and 100Base FX
- IEEE 802.3ab for 1000BaseT(X)
- IEEE 802.3z for 1000BaseSX/LX/LHX/ZX/EZX
- IEEE 802.3x for Flow Control
- IEEE 802.1D for Spanning Tree Protocol
- IEEE 802.1w for Rapid STP
- IEEE 802.1Q for VLAN Tagging
- IEEE 802.1p for Class of Service
- IEEE 802.1X for Authentication
- IEEE 802.3ad for Port Trunk with LACP

Protocols: IGMPv1/v2 device, GMRP, GVRP, SNMPv1/v2c/v3, DHCP Server/Client, BootP, TFTP, SNMP, SMTP, RARP, RMON, HTTP, Telnet, Syslog, DHCP Option 66/67/82, SSH, SNMP Inform, Modbus/TCP, LLDP

MIB: MIB-II, Ethernet-Like MIB, P-BRIDGE MIB, Q-BRIDGE MIB, Bridge MIB, RSTP MIB, RMON MIB Groups 1, 2, 3, 9

Flow Control: IEEE 802.3x flow control, back pressure flow control

Switch Properties

- Priority Queues:** 4
- Max. Number of Available VLANs:** 64
- VLAN ID Range:** VID 1 to 4094
- IGMP Groups:** 256

Interface

- Fast Ethernet:** 3 10/100BaseT(X) RJ45 ports
- Gigabit Ethernet:** 3 10/100/1000BaseT(X) ports, auto negotiation speed, or 3 1000BaseSFP slots for fiber ports
- Console Port:** RS-232 (RJ45 connector)
- Alarm Contact:** 1 relay output with current carrying capacity of 1 A @ 24 VDC

Power Requirements

- Input Voltage:** Dual 24 VDC power inputs for redundancy
- Power Consumption:** 14.5 watts (without modules)
- Overload Current Protection:** Present
- Connection:** 2 removable 3-pin terminal blocks
- Reverse Polarity Protection:** Present

Physical Characteristics

- Housing:** Metal
- Dimensions:** 286.5 x 144 x 137 mm (11.26 x 5.67 x 5.39 in)
- Weight:** 2790 g (6.15 oz) (includes four slot covers)
- Installation:** Wall mounting

Environmental Limits

- Operating Temperature:** -40 to 75°C (-40 to 167°F)
- Storage Temperature:** -40 to 85°C (-40 to 185°F)
- Ambient Relative Humidity:** 5 to 95% (non-condensing)

Standards and Certifications

- Safety:** UL 508 (Pending)
- EMI:** FCC Part 15 Subpart B Class A, EN 55022 Class A
- EMS:** EN 61000-4-2 (ESD) Level 2, EN 61000-4-3 (RS) Level 3, EN 61000-4-4 (EFT) Level 3, EN 61000-4-5 (Surge) Level 3, EN 61000-4-6 (CS) Level 3, EN 61000-4-8, EN 61000-4-11
- Shock:** IEC60068-2-27
- Freefall:** IEC60068-2-32
- Vibration:** IEC60068-2-6

Ordering Information

Available Models

VPort 704-T: 4-slot industrial multi-service gateway, 3 combo Gigabit ports, 3 10/100baseT(x) ports, -40 to 75°C operating temperature

Communication Modules (can be purchased separately)

VPM-7704: 4-port RS-232/422/485 3-in-1 device server module

Optional Accessories (can be purchased separately)

DR-4524/75-24/120-24: 45/75/120 W DIN-Rail 24 VDC power supplies

MDR-40-24/60-24: 40/60 W DIN-Rail 24 VDC power supplies, -20 to 70°C operating temperature

Package Checklist

- VPort 704-T multi-service gateway
- Two 3-pin terminal blocks for 2 redundant power inputs
- One 3-pin terminal block for 1 relay output
- RJ45 to DB9 console port cable
- Documentation and software CD
- Quick installation guide (printed)
- Warranty card