

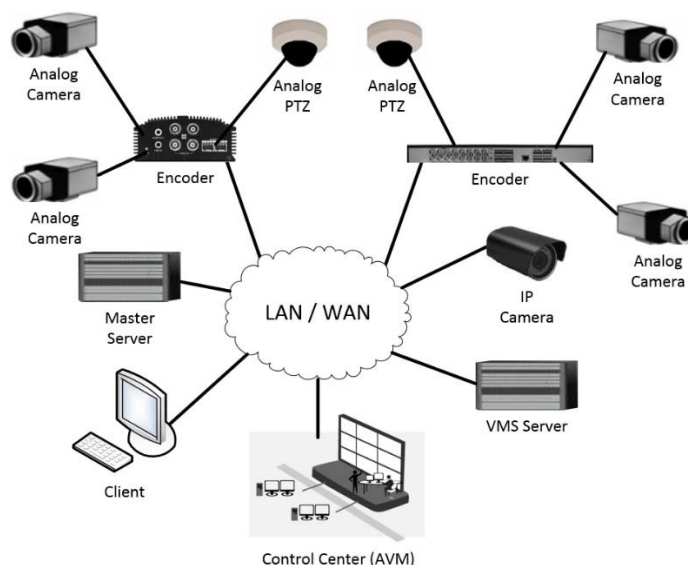


Mirasys WD1-4 and WD1-16 Encoders

Mirasys Encoders (Mirasys WD1-4 & Mirasys WD1-16) capture video feeds from analog cameras and send them to a Mirasys Video Management System (VMS) environment over an IP network. The encoders are fully site independent and can be located anywhere in a local or wide area network. **They can communicate directly with all Mirasys systems, bringing all the Mirasys benefits into the reach of existing analog camera networks – the benefits range from intelligent video analysis (VCA) to automatic number plate recognition and all control room tools.** You can remotely control existing equipment such as PTZ cameras, access control devices, or sensors. Mirasys encoders can also be connected to specialized cameras such as a miniature, microscope or thermal cameras.

Key Benefits

- **Broad support of Encodings** – Virtually any analog camera can be supported as Mirasys encoders supports WD1/4CIF/2CIF/CIF/QCIF encodings by H.264/MPEG4/MPEG2 compressions all the way to 25 fps (PAL) or 30 fps (NTSC) and 15 fps MJPEG compression. WD1 (960H) resolution (960x576 PAL, 960x480 NTSC) is widescreen by default.
- **Recording Server Can Reside Anywhere** – The Recording Server (VMS) can reside anywhere on the IP network, and not where the analog cabling terminates, as when using a hybrid server with capture/grabber cards.
- **Digital I/O Support** – Compared to a hybrid server with capture/grabber card, the Digital I/O support is built-in/included with an encoder (no separate I/O card/device required).
- **Can be powered and controlled by the Network** – Mirasys encoders can be controlled by an SNMP manager, which has the task of monitoring or managing a group of hosts or devices on a computer network. Mirasys encoders support all different versions of SNMPv1/v2c/v3(MIB-II). The Mirasys WD1-4 can also be powered over the Ethernet (PoE).

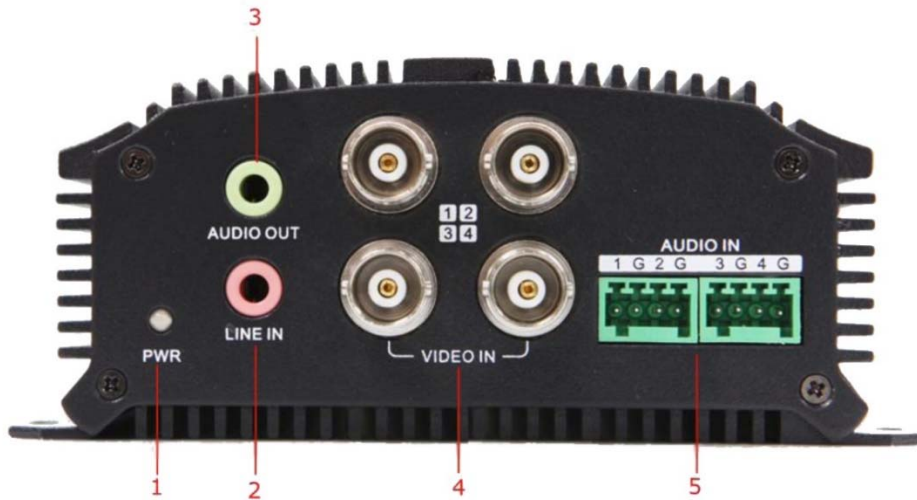


The encoders can be placed anywhere within the network infrastructure



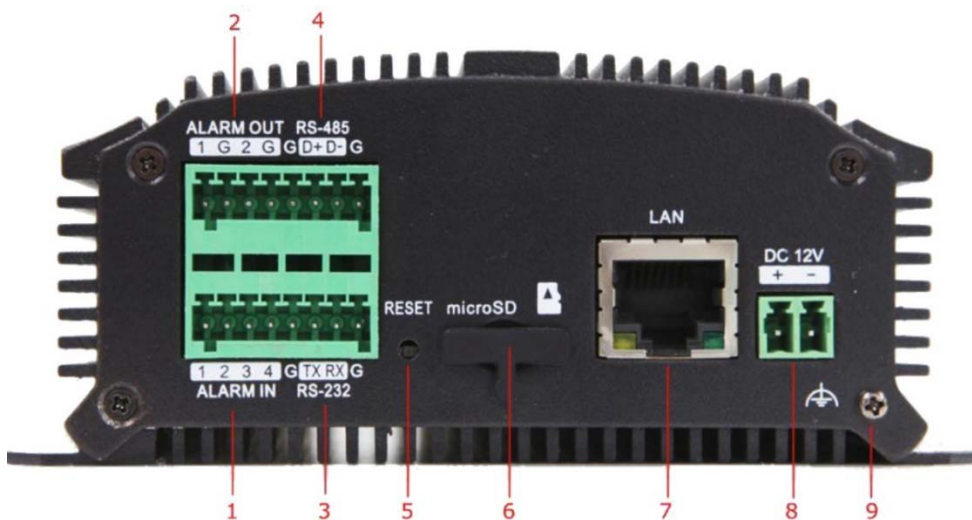
MIRASYS WD1-4 FOR 1 TO 4 CHANNELS

Front panel



- 1) Power Led Indicator
- 2) Line In
- 3) Audio Out
- 4) Video In
- 5) Audio In

Back panel



- 1) Alarm In
- 2) Alarm Out
- 3) RS-232 Serial Interface
- 4) RS-485 Serial Interface
- 5) Reset
- 6) microSD slot (not used)
- 7) 10/100 Mbps adaptive Ethernet, PoE)
- 8) 12 VDC
- 9) GND

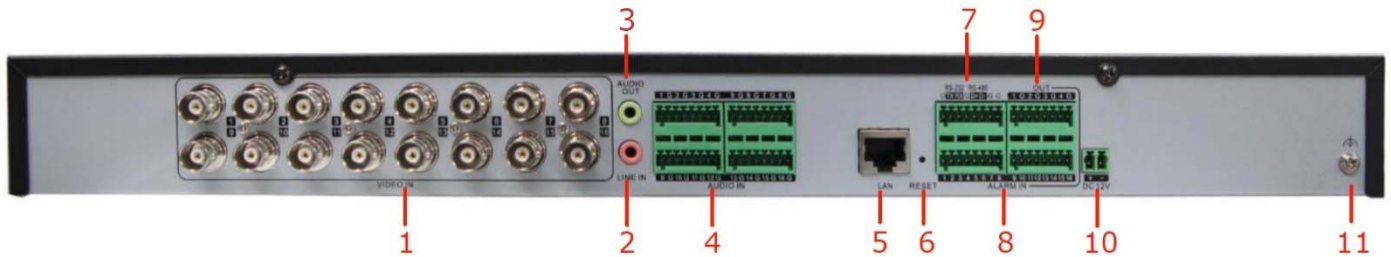
**Mirasys WD1-4 Stats and Attributes**

Video/Audio input	Video Compression:	H.264 / MPEG4 / MPEG2 / MJPEG
	Video input:	4-ch, BNC (1.0 Vp-p, 75 Ω)
	Audio compression:	G.711u
	Audio input:	4-ch, Line input interface (2.0 Vp-p, 1 kΩ)
	Two-way audio:	1-ch, 3.5 mm audio (2.0 Vp-p, 1 kΩ)
Video/Audio output	Audio output:	1-ch, 3.5mm interface (Linear, 600 Ω)
	Encoding resolution:	WD1 / 4CIF / 2CIF / CIF / QCIF
	Frame rate:	H.264/MPEG4/MPEG2 encoding: 25 fps (P) / 30 fps (N); MJPEG encoding: 15 fps
	Video bit rate:	32 Kbps ~ 3072 Kbps, or user defined (Max. 8192 Mbps)
	Audio bit rate:	64 Kbps
	Dual Stream:	Support
	Stream Type:	Video / Video & Audio
Network protocols	Protocols Supported:	IPv4/v6, HTTP, HTTPS, QoS layer3 DiffServ, FTP, SMTP, Bonjour, UPnP, SNMPv1/v2c/v3(MIB-II), DNS, DynDNS, hkdDNS, NTP, RTSP, RTP/RTCP, TCP, UDP, IGMP, ICMP, DHCP, ARP, SOCKSv4/v5, PSIA, ONVIF, HIKCGI, netFilter
Data storage	Not Used	
External interface	Network interface:	1 RJ-45 10 / 100 Mbps adaptive Ethernet interface (PoE)
	Serial interface:	1 RS-485, 1 RS-232
	Alarm in:	4
	Alarm out:	2
General	Power supply:	12 VDC, or PoE
	Consumption:	≤ 8W
	Working temperature:	-10°C~+55°C(14°F~131°F)
	Working humidity:	10%~90%
	Dimension(W×D×H):	114 × 48 × 128 mm
	Weight:	≤ 1 Kg



MIRASYS WD-1-16 FOR 1 TO 16 CHANNELS, 19" RACKMOUNT COMPATIBLE

Back Panel



- | | |
|---|------------------------------------|
| 1) Video in | 7) RS-232, RS-485 Serial Interface |
| 2) Line in | 8) Alarm in |
| 3) Audio out | 9) Alarm out |
| 4) Audio in | 10) 12 VDC |
| 5) Up to 1000 Mbps adaptive Ethernet interface) | 11) GND |
| 6) Reset | |

Mirasys WD1-16 Stats and Attributes

Video/Audio input	Video Compression:	H.264 / MPEG4 / MPEG2 / MJPEG
	Video input:	16-ch, BNC (1.0 Vp-p, 75 Ω)
	Audio compression:	G.711u
	Audio input:	16-ch, Line input interface (2.0 Vp-p, 1 kΩ)
	Two-way audio:	1-ch, 3.5 mm audio (2.0 Vp-p, 1 kΩ)
Video/Audio output	Audio output:	1-ch, 3.5mm interface (Linear, 600 Ω)
	Encoding resolution:	WD1 / 4CIF / 2CIF / CIF / QCIF
	Frame rate:	H.264 / MPEG4 / MPEG2 encoding: 25 fps (P) / 30 fps (N); MJPEG encoding: 15 fps
	Video bit rate:	32 Kbps ~ 3072 Kbps, or user defined (Max. 8192 Mbps)
	Audio bit rate:	64 Kbps
	Dual Stream:	Support
	Stream Type:	Video / Video & Audio
Network protocols	Protocols Supported:	IPv4/v6, HTTP, HTTPS, QoS layer3 DiffServ, FTP, SMTP, Bonjour, UPnP™, SNMPv1/v2c/v3 (MIB-II), DNS, DynDNS, hkDDNS, NTP, RTSP, RTP/RTCP, TCP, UDP, IGMP, ICMP, DHCP, ARP, SOCKSv4/v5, PSIA, ONVIF, HIKCGI, netFilter
External interface	Network interface:	1 RJ-45 10 / 100 / 1000 Mbps adaptive Ethernet interface (PoE)



Mirasys Encoders

Datasheet, January 2016

	Serial interface:	1 RS-485, 1 RS-232
	Alarm in:	16
	Alarm out:	4
General	Power supply:	12 VDC, or PoE
	Consumption:	≤ 22W
	Working temperature:	-10°C~+55°C(14°F~131°F)
	Working humidity:	10%-90%
	Dimension(W×D×H):	440 × 45 × 274 mm (19" rackmount compatible)
	Weight(without HDD):	≤ 4 Kg

WIDE SUPPORT FOR ANALOG PTZ PROTOCOLS

Supported PTZ Protocols for Mirasys WD1-4 and Mirasys WD1-16

1602-PROTOCOL	IntegrativeP	PLD	TIANDY-PELCO-D
3609hd	KALATEL	RedApple	TIANDY-PELCO-P
A-01	KC3360S	RM110	TIANMIN-PELCO-D
AB-D	Kony	SAE	TIANMIN-PELCO-P
AB-P	KTD-348	Samsung	TL-HHX2000
ACES	LC-D2104	SHINEI	TL-PELCO-P
ADV	LG MULTIX	Siemens	TL-V1200
ALSON	LILIN	SONY-EVI-D100/P	VC-2000PTC-C
ANTEN	MAOWANG	SONY-EVI-D30/31	VCL
BBV-RS422	NAIJIE	SONY-EVI-D70	VICON
BEWATOR-PELCO-D	NITRO	SPD-2200	VIDO B-01
DRAGON	PANASONIC_CS850	SUNELL	VIDO B-02
DSCP	PELCO-D	TCL-PELCO-D	YAAN-1
HIKVISION	PELCO-P	TCL-PELCO-P	YAAN-2
Honeywell	PELCO-RS422TY	TC-PELCO-D	YF-06
HY	PHILIPS	TC-PELCO-P	YOULI
INFINOVA	PHILPS-3	TECHWIN	
Infinovadcp001a	PIH-1016	Tiandy	

ENCODER ORDER CODES

P20EW04	Mirasys WD1-04	4ch WD1 (960H) encoder
P20EW16	Mirasys WD1-16	16ch WD1 (960H) encoder