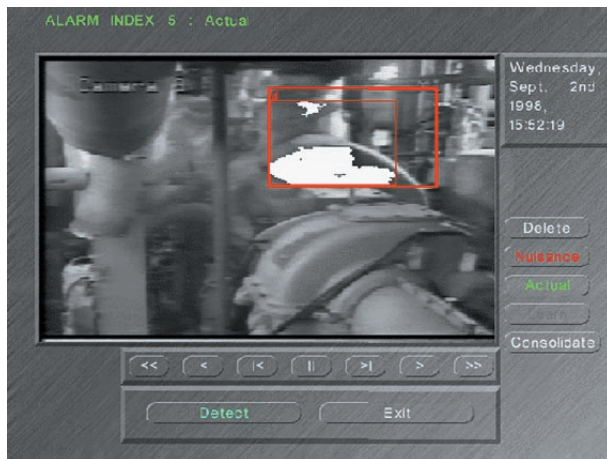


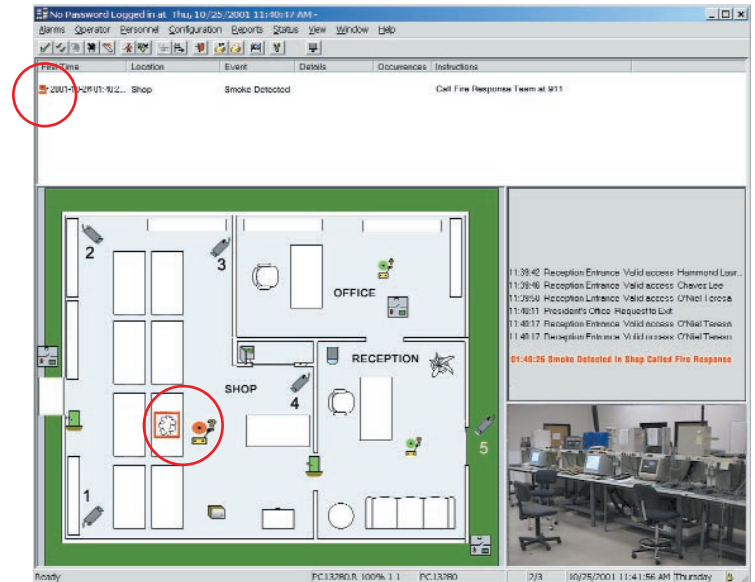
Visual Smoke Detection Module



Video Smoke Detection



Video imagery of smoke, programmed into zone on computer monitor, sounds alert before it is visible to the human eye.



Early detection of a potential fire can mean the difference in the cost of damage to a facility and its assets. Reliable, early warning without unwanted or nuisance alarms are the reasons for growing interest in CCTV-based fire detection systems. MAXxess now makes standard indoor and outdoor CCTV cameras more useful with a powerful integration system capable of detecting smoke in the incipient stages of fire, sometimes before it is even visible to the naked eye!

The MAXxess Visual Smoke Detection Module uses a self-contained processing system capable of recognising small amounts of smoke within the video image and is precise enough to distinguish smoke from steam. Not just a motion detector! Specifically designed to detect smoke. Through customised zones and alarm conditions false alarms are minimised. With the use of standard CCTV cameras detection is flexible to indoor/outdoor conditions as well as distances.

Visual Smoke Detection Features

- *Fast, early detection to a potential fire*
- *Utilises existing CCTV surveillance cameras*
- *On-screen visual verification*
- *Up to 80 detection zones per system*
- *Indoor or outdoor use*
- *Long range detection*
- *Wide area coverage*
- *Real time detection*
- *Customisable zone and alarm outputs*
- *Unaffected by extreme weather or temperatures*
- *Digital alarm image storage to hard disk*
- *Seamlessly integrates with MAXxess security systems*

Benefits

- *Eliminates failed or delayed detection due to human error*
- *Fast response to a potential fire*
- *Minimises cost of fire damage with early detection*

Visual Smoke Detection Module

Specifications

System Requirements: Industrial Pentium® II Computer,
SVGA Monitor, Keyboard & Mouse
19" Rack mount option

Power Supply: 230/115V AC

Camera Requirement: Fixed Mounting
Monochrome or Colour
NTSC or PAL
Min 380 TV Lines of Resolution
Auto White Balance
Auto Gain Control
Auto Iris with Manual Focus

MAXxess

An Odetics Company

www.maxxess-systems.com

MAXxess Systems

Headquarters

1515 S. Manchester Ave.
Anaheim, CA USA
92802-2907

Tel + (1) 714 772 1000

800 842 0221

Fax + (1) 714 780 7592

Email sales@maxxess-systems.com

Service & Technical Support

Tel + (1) 714 772 1000

800 842 0221

Fax + (1) 714 780 7592

Email support@maxxess-systems.com

MAXxess Systems

Europe, Middle East, Africa

Fujitsu House
Lovelace Road
Bracknell, Berkshire
England, RG12 8SN

Tel +44 (0) 870 234 7654

Fax +44 (0) 870 234 7655

Email sales@maxxess-systems.com

Service & Technical Support

Tel +44 (0) 870 234 5992

Fax +44 (0) 870 234 7655

Email support@maxxess-systems.com

Information furnished by MAXxess is believed to be accurate and reliable. However, no responsibility is assumed by MAXxess for its use nor for any infringements of patents or other rights of third parties that may result from its use. No license is granted by implication or otherwise under any patent rights of MAXxess Systems, Inc. Specifications subject to change without notice.

© 2002 MAXxess Systems, Inc., Anaheim, CA USA
3606-VSD Printed in the UK