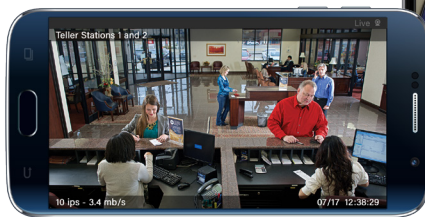
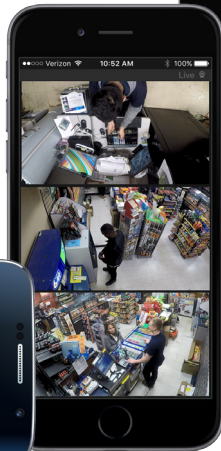


# Command Mobile

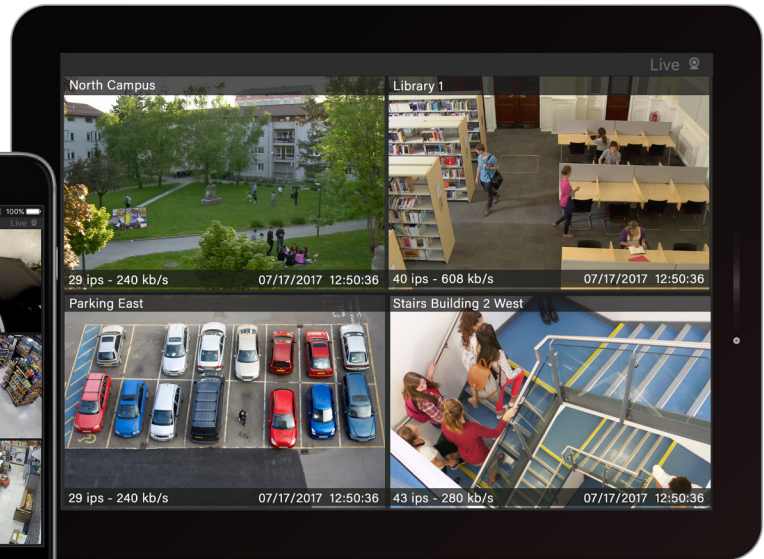
Mobile application for viewing live and recorded video



Use full-screen mode to take a closer look

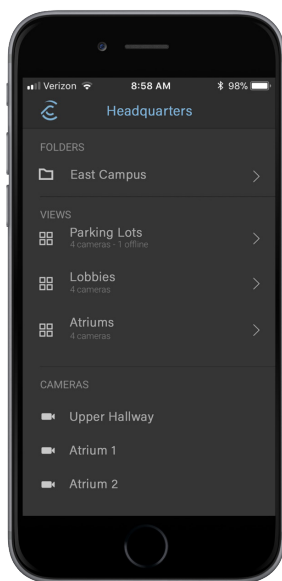


In vertical view, see video from three cameras on one screen, with or without camera information displayed



In horizontal view, see video from four cameras on one screen, with or without camera information displayed

**March Networks® Command™ Mobile** is a smartphone app that allows you to view live and recorded video on your mobile device; it works seamlessly with the cameras on your March Networks 8000, 9000 or RideSafe recorder. The March Networks Command Mobile smartphone app runs on iPhones, iPads, and Android devices, and can be downloaded for free from the App Store or Google Play.



The Logical and Personal folders in Command make it easy for you to display the cameras and pre-programmed views at each of your locations.

## Key Benefits

- ▼ **Situational awareness.** Remotely conduct a “virtual patrol” to assess a situation in advance, prior to taking action, including PTZ control and dewarping of compatible 360° cameras.
- ▼ **Synchronized with Command Enterprise Server (CES).** The app is an extension of Command Client, so it accepts your existing Command login credentials, and gives you access to both the Logical and Personal tree resources (folders, views, and cameras) already set up in CES.
- ▼ **View live and pre-recorded video.** Search for archived video by time and date, then use the timeline slider to move back and forth in the recorded video.
- ▼ **Pinch to zoom.** Easily control zoom settings and see the details you need.
- ▼ **View camera information.** For each camera displayed on your device, you can see the camera’s name, frame rate, data rate, date and time.
- ▼ **Adjust video quality.** For both live and recorded video, you can adjust the video to achieve the perfect balance between image quality and frame rate, based on the available bandwidth.

*Use your mobile device to access your cameras and check in on your business from wherever you are.*

# Command Mobile

## MOBILE DEVICE REQUIREMENTS

- Apple iPhone and iPad (iOS Version 10 and above)
- Android (OS 6 and above)

## RECORDING SYSTEM MINIMUM REQUIREMENTS\*

- 8000 Series Hybrid NVRs and RideSafe Recorders (v5.8.5 and above)
- 9000 Series IP Recorders ( v5.9 and above)
- Command Recording Server (v2.1.1 and above)
- Command Enterprise Server (v2.2 and above)

\* Requirements may change based upon new releases and software/firmware EOL.

## NETWORK REQUIREMENTS

- Applicable Cellular data Networks
- Wi-Fi Network

## SECURITY

End-to-end with TLS 1.2 encryption

