



# IR CAMERA

CMR 7082 / 7084 / 7088

D&N ATR 700TVL IR Camera



## 700TVL ICON

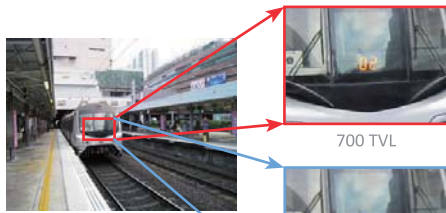


### Resolution Of 700TV Lines

By adopting a diagonal 6mm(1/3") 480K pixels, 570K pixels CCD, the camera produces clear picture quality with a horizontal resolution of 700TV lines for color.



700 TVL



700 TVL

Conventional



### High Light Compensation

Improves the visual recognition of license plates and other such objects by suppressing or masking strong light sources (such as the headlights of automobiles) in dark places.



Conventional



HLC



### Adaptive Tone Reproduction

Improves the visibility of the entire picture by providing the optimum gradation compensation.



Conventional



2D ATR



### AWB

Allows the color camera to adjust the tone according to the light source, adjust to produce white color while detecting white color object in the scene.



AWB OFF



AWB ON



### Noise Reduction

Reduces the image noise in order to improve the image quality of the camera ,in particular ,it reduces the noise which is generated under low-brightness shooting conditions and other high-gain states

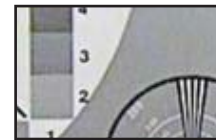
#### ► Noise reduction keeping image sharpness (2D)



NR Off



Conventional NR



Preserved edge by New 2D-NR



### Privacy Zone

Privacy zones prevent objects and areas such as windows and doors which are within the camera's viewing range but not in the scope of surveillance , 8 masking areas per screen simultaneously.



Conventional



Privacy Zone



### OSD

This camera provides an on screen display (OSD) setup menu where all advanced functions can be selected and setup via OSD.



### Color Rolling Suppression (ANTI CR)

Suppresses the color rolling which arises when there are slight deviations between the blinking frequency of non -inverter fluorescent lights and the drive frequency of the image sensor devices.



ANTI CR





# CMR 7082 / 7084 / 7088

Camera Series  
IR Camera

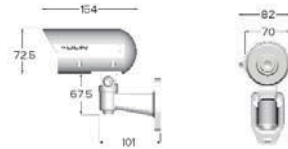
D&N ATR 700TVL IR Camera

## Features

- Resolution Of 700TV Lines
- Adaptive Tone Reproduction(ATR)
- Noise Reduction(2D-NR)
- High Light Compensation(HLC)
- Color Rolling Suppression(ANTI CR)
- Day & Night
- White Balance
- On Screen Display(OSD)
- Privacy Zone
- Radiant Distance Up to 30M



**Dimensions** Body : 82mm(W) x 72.5mm(H) x 154mm(D)



Bracket: 101mm(L)  
(Unit:mm)

## Weatherproof IR Camera

Name		Day & Night ATR 700TVL IR Camera						
Series Number		CMR 7082 / 7084 / 7088						
Model		CMR7082N/P3.6	CMR7082N/P6	CMR7084N/P3.6	CMR7084N/P6	CMR7088N/P3.6	CMR7088N/P6	
Lens	Focal Length	3.6mm	6mm	3.6mm	6mm	3.6mm	6mm	
	Iris	F2.0	F1.8	F2.0	F1.8	F2.0	F1.8	
	Angle of View	H	73°	44.5°	73°	44.5°	73°	44.5°
		V	54.5°	33.1°	54.5°	33.1°	54.5°	33.1°
D		92°	56°	92°	56°	92°	56°	
Power Supply System	DC12V (±10%)		AC24V±10%		AC100~240V			
Pick Up Element	NTSC or PAL							
Effective Pixels	NTSC	1/3" Exview HAD CCD Sensor						
	PAL	976(H) x 494(V)						
Chip Size	976(H) x 582(V)							
H/V Sync.	5.58mm(H) x 4.67mm(V)							
Frequency	NTSC	15.734 KHz / 59.94Hz [NTSC]						
	PAL	15.625 KHz / 50Hz [PAL]						
Scanning System	2:1 Interlace							
Menu Control	OSD Control							
Sync. Mode	Internal							
Resolution	Color: 700TV Lines, Mono: 750TV Lines							
Minimum Illumination	0.2Lux/F1.8, 0Lux(IR On)							
S/N Ratio	More Than 50dB (AGC-OFF)							
Auto Gain Control	AUTO / MANUAL							
White Balance	ATW / PUSH / USER1 / USER2 / ANTI CR / MANUAL / PUSH LOCK							
Shutter	Auto	1/60(1/50)S ~ 1/100,000S						
	Manual	1/60(1/50)S, 1/100(1/120)S, 1/250S, 1/500S, 1/1,000S, 1/2,000S, 1/4,000S, 1/10,000S						
Adaptive Tone Reproduction	Luminance	LOW / MID / HIGH						
	Contrast	LOW / MIDLOW / MID / MIDHIGH / HIGH						
Back Light Compensation	BLC / HLC(High Light Compensation) / OFF							
Noise Reduction	Y / C / Y/C / OFF							
Picture Adjust	MIRROR / BRIGHTNESS / CONTRAST / SHARPNESS / HUE / GAIN							
Privacy Masking	ON / OFF							
Privacy Masking Zone	8 Zones							
OSD Language	ENGLISH/JAPANESE/GERMAN/FRENCH/RUSSIAN/PORTUGUESE/SPANISH/SIMPLY CHINESE							
Video Output	CVBS 1.0Vp-p, 75ohm							
Gamma Characteristic	γ=0.45							
Power Consumption	7.8W		11W					
Operating Temperature	-10°C ~ +50°C (14°F ~122°F)							
IP Rating	IP66							
Windows	Φ65 Heat Resistant Glass							
InfraredLED	PeakWavelength	850nm						
	Radiant Distance	30M						
	Beam Spread	30°						
Dimension	Body:82mm(W) x 72.5mm(H) x 154mm(D), Bracket: 101mm(L)							
Weight	530g			540g				