

# Illustra **EDGE**

Simple, Out-of-the-Box  
IP Camera/VMS Solution



The Illustra Edge Series IP cameras are a complete camera/VMS solution combining the ease and simplicity of the exacqVision VMS with the quality and features of Illustra IP cameras.

The Illustra Edge Solution:

- Easy and cost effective way to deploy a high-definition IP video system for up to 10 cameras
- No server hardware required—video stored to the onboard micro SD card. Saves time and money.
- Complete bundled solution including a licensed exacqVision Edge server with 1 year SSA, premium quality, high performance Micro SD Card and an Illustra Pro Fisheye, Compact Mini-Dome, or Compact Mini-Bullet camera
- Expandable to unlimited servers with simple license upgrade to exacqVision Edge+

## High Definition Video as Easy as 1-2-3

**1**



**Mount**



**2**



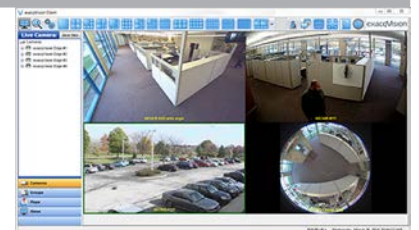
**Connect**



**3**



**Watch**



## High Quality, High Definition Compact Cameras

### Illustra Pro Fisheye

- High resolution 360° situation awareness
- On-board and Client-side dewarping
- 5MP



### Illustra Pro Compact Dome

- 2MP, 1080p
- Wide field of view
- Discreet
- 3-Axis gimbal



### Illustra Pro Compact Mini-Bullet

- 2MP, 1080p
- True day/night
- IR illumination
- Wide dynamic range



# Specifications

## Ideal Illustra Edge Applications

- Small retail or office installations where less than 10 cameras are needed
- Remote sites where server hardware installations is not practical (power transformer sub-stations, oil & gas wells)
- Enterprise installations with the need to deploy cameras not included or accessible on the central surveillance system
- Environments with unreliable wireless or WAN connectivity – camera records even when network is down
- Monitor remote server rooms independently of building surveillance recording.



### TYPICAL RECORDING\*

SD Card	Camera Resolution			
	1MP	2MP	3MP	5MP
32GB	13 days	6 days	N/A	N/A
64GB	27 days	12 days	8 days	5 days

*Typical storage experience based on recording at 10 fps at 15% motion using H.264 codec. Results will vary. 10 days motion based video recording (in most installation use-cases)*

\* Upgrade to Edge+ to archive more video to an exacqVision S-Series network storage appliance or other compatible NAS appliance.

## exacqVision Edge

System	
Maximum simultaneous cameras	10
Free Windows, Linux, or Mac clients	Yes
Browser-based viewing of live/stored video	with installation of free PC web service software
Tablet/smartphone based viewing of live/stored video	with installation of free web service software on a separate computer
Client-side dewarp of fisheye camera	Yes
Client bandwidth throttling	Yes
Pre-post alarm recording	Yes
Soft triggers	Yes
Live View	
View cameras on multiple monitors	Yes
PTZ control and presets	Yes
Digital PTZ controls and presets	Yes
Motion and alarm indication	Yes
Search, Playback, Export, and Archive	
exacqReplay instant replay	Yes
Thumbnail and timeline event search	Yes
Multi-camera playback	Yes
Export video to DVD	Yes
Export video to .AVI, .MOV, or .EXE file	Yes

## Illustra IP Cameras

	Compact Mini-Dome	Compact Mini-Bullet	Fisheye
Max Frame Rate/Video Compression			
H.264	30 ips @ 1920 x 1080	30 ips @ 1920 x 1080	30 ips @ 1920 x 1080
MJPEG	30 ips @ 1920 x 1080	30 ips @ 1920 x 1080	30 ips @ 1920 x 1080
Resolution Options	720p, 1080p	720p, 1080p	CIF, 4CIF, 720p, 1080p
Imager	1/2.7"	1/2.9"	1/2.5"
Day/Night	Soft Day/Night	True Day/Night	Color only
Minimum Illumination (Lux)			
Color	0.3	N/A	1.2 lux
B/W	N/A	0 at F2.0	N/A
IR	N/A	0	N/A
IR Illuminator	No	Yes	N/A
Lens Type	2.80mm fixed	4.3mm	1.37mm
Horizontal Field of View	123.2°	74.4° (H) - 40.8° (V)	180°
Auto Focus/Motorized Zoom	No	Yes	No
Motion Detection	Yes	Yes	Yes
Alarm Input/Output	N/A	1/1	N/A
Wide Dynamic Range	N/A	96dB	82dB
Onboard Storage	Yes, SD card included	Yes, SD card included	Yes, SD card included
Power Input	PoE 802.3af, Class 2	12V DC, PoE 802.3af	PoE 802.3af, Class 3
Power Draw	7W maximum, average of 3-5W for normal daily use	4.44W	See datasheet
Operating Temperature	PoE: 0°C to 40°C (32°F to 104°F)	12V DC: -20°C to 50°C (-4°F to 122°F); PoE: -20°C to 45°C (-4°F to 113°F)	PoE: -10°C to 45°C (14°F to 113°F)
Dimensions	55 x 105 x 105 mm (2.17 x 4.13 x 4.13 in)	73.5 x 76 x 245 mm (2.89 x 2.99 x 9.65 in)	Body diameter: 149 mm (5.85 in); Height: Vandal-resistant 74 mm (2.91 in), Non Vandal-Resistant 60 mm (2.36 in)
Outdoor Rating	N/A	IP66	N/A
Vandal Resistant	IK10-rated	IK10-rated	N/A
Housing Color	White	White	White

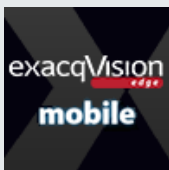
## Model Numbers

Model	Description
IQS02CFICWSN	Illustra Edge 2MP compact mini-dome, 2.8mm, indoor, vandal, clear, white, SDN, 32GB micro SD card, exacqVision Edge server license with 1 Year SSA
IQS02MFONWTY	Illustra Edge 2MP compact mini-bullet, 4.3mm, outdoor, vandal, white, TDN, WDR, 32GB micro SD card, exacqVision Edge server license with 1 Year SSA
IQS05FFACWCY	Illustra Edge 5MP Fisheye 360°, 1.37mm, indoor, non-vandal, white, color, WDR, 64GB micro SD card, exacqVision Edge server license with 1 Year SSA

### ILLUSTRA CAMERA MODEL KEY

ILLUSTRA SERIES	MODEL	RESOLUTION	FORM FACTOR	LENS	ENVIRONMENT	BUBBLE	COLOR	DAY/NIGHT/IR	WDR	OTHER	
I	E = Essentials	L = Lite	01 = 1MP	B = Bullet	N = None	N = None	N = None	B = Black	C = Color Only	N = No	A = Hardware Update
	F = Flex	P = Plus	02 = 2MP	C = Compact Dome	F = Fixed	A = Indoor NonVandal	C = Clear	G = Gray	I = TDN w/IR	T = Multi-Exposure (>60 Frames)	
	P = Pro	S = Standard	03 = 3MP	D = Dome	0 = 1.8–3mm	B = Outdoor NonVandal	S = Smoked	S = Silver	S = Soft Day/Night	Y = Yes	
	Q = Edge		05 = 5MP	F = Fisheye	1 = 2.8–12mm	I = Indoor Vandal	W = White	T = TDN			
				M = Mini-Bullet	2 = 3–9mm	O = Outdoor Vandal					
				P = PTZ	3 = 9–22mm						
				W = Wireless Cube	4 = 9–40mm						
				X = Box	5 = 20x						
					6 = 30x						

## Related Products



exacqVision  
Mobile App



victor

## Approvals



Driving network video through global standardization

[www.illustracameras.com](http://www.illustracameras.com)