



Setting New Standards  
in Entrance Control

**Secure** Provides similar level of security as traditional 1/2 height turnstiles

**Fast** Throughput of up to 1 person per second

**Aesthetic** Unique elegant and versatile design for premium applications

**Safe** Unhindered disabled access and emergency egress

**Convenient** Integrates with all access control systems

**Reliable** Over 1000 systems installed worldwide

## Concept

Fastlane optical turnstiles have been designed to provide a solution to the common problems faced by the modern building environment, such as the need for quick unhindered access for staff and visitors, while protecting assets, information and personnel from the dangers of unauthorised entry, in an aesthetic environment.

Three main points highlight the design philosophy behind Fastlane:

- High Security
- Quick and Easy Throughput
- Discreet Aesthetics

Fastlane turnstiles are state of the art 'optical' turnstiles, which replace the need for an intrusive physical/mechanical barrier by utilising active infra-red beams to create an invisible electronic field between two pedestals. Fastlane automatically monitors the passage of every individual entering and leaving the facility, only alerting security staff to the presence of unauthorised entrants. Clients and employees alike pass through Fastlane's channels with speed and safety whilst all unauthorised entry attempts are identified.



## Fastlane Clearstyle

The Fastlane Clearstyle has redefined the optical turnstile category, by providing the most discreet form of security possible and exceeding the most demanding architects' design requirements. Clearstyle blends right in to the fabric of the building, delivering the perfect combination of security and aesthetics. The construction is a combination of stainless steel and clear Perspex panels. The stainless steel end sections can be provided in a variety of finishes to ensure a perfect match with the building's surroundings.



## Secure

Fastlane offers a similar level of security as a 1/2 height turnstile and is designed to alert security staff to unauthorised entry attempts by triggering an audible alarm and controlling other security measures such as CCTV systems, lighting and locking doors. Fastlane activates an alarm in the event of an illegal action i.e. if an unauthorised person attempts to enter.

Fastlane is also designed to detect the following: -

**Tailgating** - People who attempt to enter without a valid access card by following closely behind an authorised cardholder.

**Collusion & Obstruction** - Fastlane alarms when two individuals actively collude to gain entry with a single card, or where beams are deliberately blocked.

**Pass-back** - Helps to enforce the 'one card, one person, one direction' rule, assisting the access control system to maintain 'anti pass-back' integrity.

**Non-entry** - Fastlane can detect when a card is presented but a person does not pass through the channel.

## Aesthetic

Fastlane's discreet presence offers unrivalled benefits in terms of aesthetics and design flexibility. A wide range of enclosures are available and the pedestals can be custom designed to complement the most diverse design concepts, providing a welcoming and non-confrontational entrance to staff and clients alike, ensuring the ultimate in architectural flexibility and security. This is particularly relevant in corporate offices, listed buildings, banks, airports etc. where design is a high priority.

## User-friendly

The absence of a physical barrier ensures fast throughput (up to one person per second) and unrestricted movement for all personnel, with safe disabled access and emergency egress. Users are greeted by an intuitive user interface, which automatically guides the user through the entry and exit procedure, ensuring fast easy access for authorised users.

## Disabled Access

Fastlane's combination of audible and visual sounders coupled with 'wheelchair width' lane options make Fastlane compliant with most international disabilities regulations without the need for a separate passgate.

## Easy Installation

Fastlane has been designed with easy installation and low maintenance in mind and can be integrated into any existing access control or building management system. Fastlane can be used in conjunction with most card reading technologies, making it ideal for both new installations and retrofits in to existing buildings.

### Power Requirements:

12v DC (11.9-14v) Supply current 2A nom per lane  
Mains PSU supplied (115v or 230v).

### Optics:

Pulsed multi infrared beam array, synchronised for detection, environmentally hardened to avoid sunlight interference.

### User Interface:

User programmable Tri-colour Graphic Display

### Sounders:

Single Tone Sounder: Card Authorisation/Alarm Condition

### Inputs:

Require voltage-free switching (current sense 1mA typical)  
Entry Request (NORMALLY OPEN)  
Exit Request (NORMALLY OPEN)  
Visitor Access (NORMALLY OPEN)

### Outputs:

Voltage free relay contacts rated 0.5A, 28vDC in two groups for the following functions:

#### Output to System:

Entry (NORMALLY CLOSED)  
Exit (NORMALLY CLOSED)  
Alarm (NORMALLY CLOSED)

#### Flow Control and Alarm Outputs:

Ready for Entry (NORMALLY CLOSED, NORMALLY OPEN, COMMON poles)  
Ready for Exit (NORMALLY CLOSED, NORMALLY OPEN, COMMON poles)  
Remote Alarm (NORMALLY OPEN)

#### Display Programming Software:

##### Operating System:

Windows 95, 98, NT compatible

#### Lane width:

Standard: 600-700 mm (23-28 inches)  
Disabled: 860-960 mm (33-38 inches)

#### Speed of Throughput

1 person per second typical. (Subject to access control system)

#### Tailgate Detection Distance

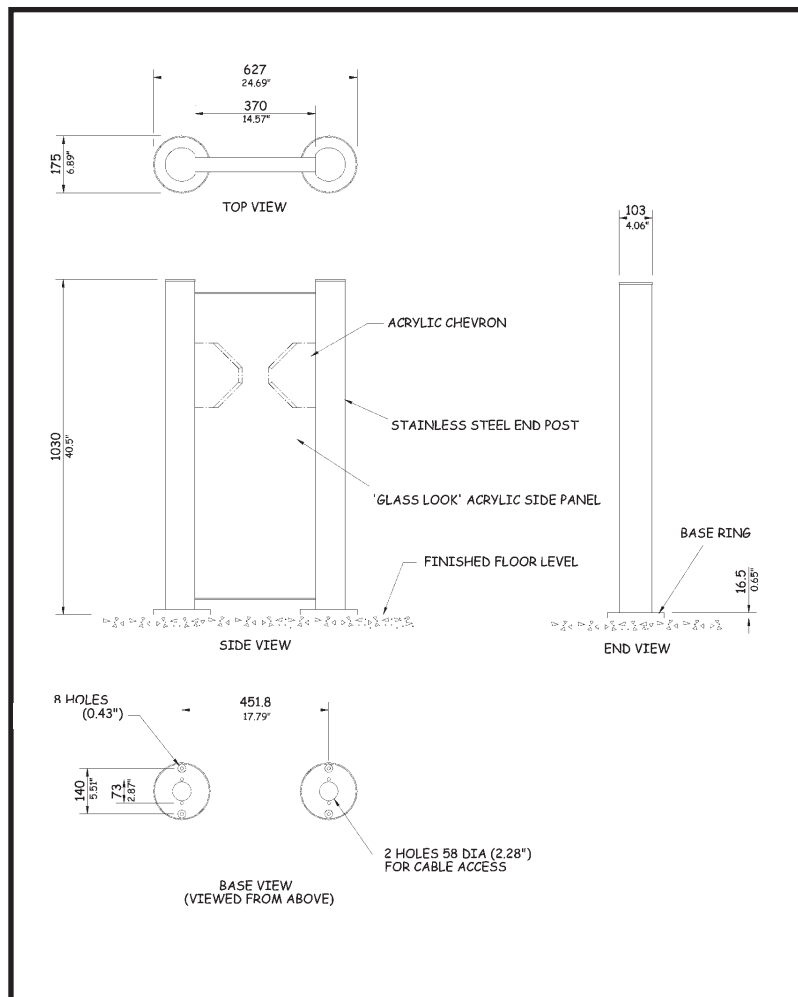
1/2 centimetre (1/4 inch)

#### Modes

Bi-Directional Card In/Card Out On Demand  
Bi-Directional Card In/Free Exit  
Enter Only/Exit Only  
Lane Closed

(Due to continued improvements specifications are subject to change without prior notice)

for further information please contact your local dealer or the manufacturer



### Accessories and Optional Extras

#### Fastlane Floor Protector

The Fastlane Floor Protector system is designed for temporary installations and enables Fastlanes to be installed quickly and cost effectively, without drilling or otherwise damaging the floor on which they stand. The system is modular and designed to support Fastlane pedestals without the need for drilling fixing bolts in to the floor or running a conduit under the floor between pedestals for cables.

#### Fastlane Infill System

The Fastlane Infill System is a series of decorative modular panels, which complement the Fastlane and Fastlane *plus* turnstiles by guiding users in the desired direction.

#### Fastlane Remote Control

This desk mounted controller is designed to allow the guard to override some of the features of the Fastlanes, facilitate visitor entry and to give a visual indication of alarms at the guard desk.

#### Card Reader Mounting

A number of alternative card reader mounting options are available. Please contact your dealer for further details.

#### Alternative material and colour finishes

A number of alternative colour and material finishes are available. Please contact your dealer for further details.