

# Vindicator Badge Manager 3

## Enhancements for People Management

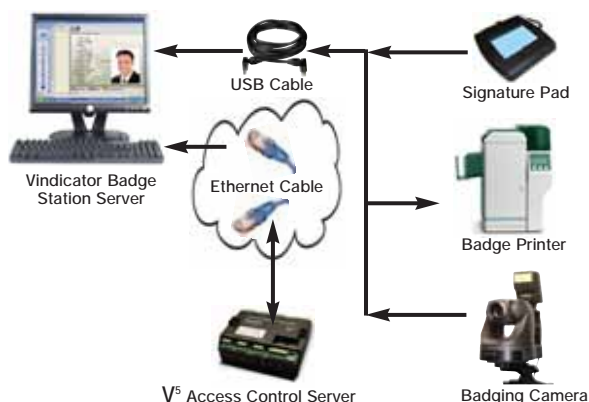


### Single Solution for all Badging Needs

Honeywell's Vindicator® solutions provide a complete platform for creating electronic access control credentials as well as issuing, enrolling and managing the entry rules associated with controlling access to and around facilities. Badge Manager includes a photo badging camera, badge printer and system software for administering all badging needs. This solution is scalable – so it can be used at one workstation or many by having local workstations share access to a common SQL database on the Badge Manager server. Badge Manager is a customizable solution that can meet the specific needs of your site and is equipped with the tools to facilitate enterprise badge creation and management. These tools include badge design tools and an enhanced flexibility to create custom badge templates and user-definable fields.

Vindicator Badge Builder is used to create and maintain complete badge profiles. It is capable of creating separate profiles for each class of cardholder and printing cards with different colors, layouts and content based on access privileges of users.

### Standalone Configuration



## FEATURES

**Badge Manager** - Badging operators and administrators get a consolidated view into the access control system. Operators are able to view, search for and manage all badgeholders across the system from any one of the installed badging client workstations.

**Badge Builder** - An important element to badge management is being able to create badge profiles which meet the needs of each required type of user, location and use-case in the operating environment. Badge Builder provides an intuitive and powerful badge-profile creation and management toolkit.

**Location Assignment** - Badging administrators can view and assign personnel to locations – and vice versa – using Badge Manager. The operator can easily and quickly see which locations are accessible to that badgeholder or group, which schedules are in effect, and what entry rules are being applied.

**Entry Rules Management** - Graphical screens are provided to create and manage group rules, authorization levels and their combinations. Characteristics such as schedules, permission/restriction settings, etc. are now available from these graphical screens as well as from PC SMART PAC.

**Report Wizard** - The user now has many options to generate system reports and can start with either a badge report or an audit report by applying database fields with filters. The user can configure a badge holder or operator action report with incredible flexibility.

**Synchronizing with the V<sup>5</sup> ACS** - In addition to pushing and pulling records to or from a V<sup>5</sup> server, Badge Manager 2.0 ensures that locations, authorization levels, group rules and schedules are reflected on the V<sup>5</sup> and vice versa.

# Vindicator Badge Manager 3

## Enhancements for People Management

### BENEFITS

#### Integrated Picture and Signature Capture

Easily capture digital photo and signature for badgeholder as demographic information is being entered.

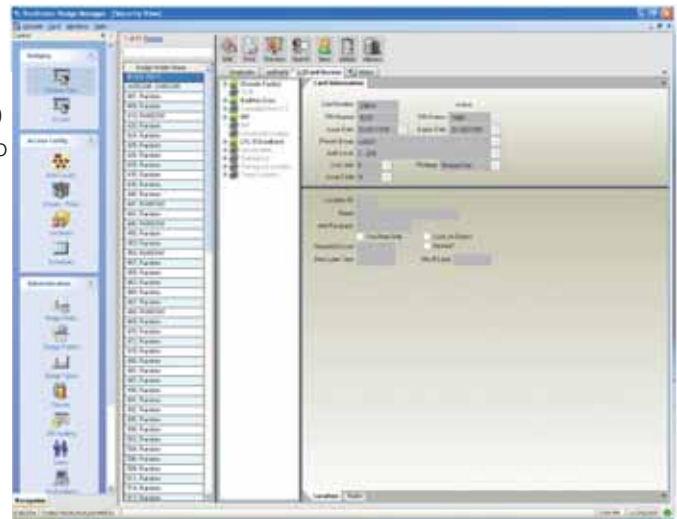
- Photo and signature fields are automatically populated when captured.



#### Card Access Privileges

To save administrators time and reduce errors, Badge Manager 2.0 includes intuitive viewing for badging administrators of locations to which a badgeholder has access with their credential.

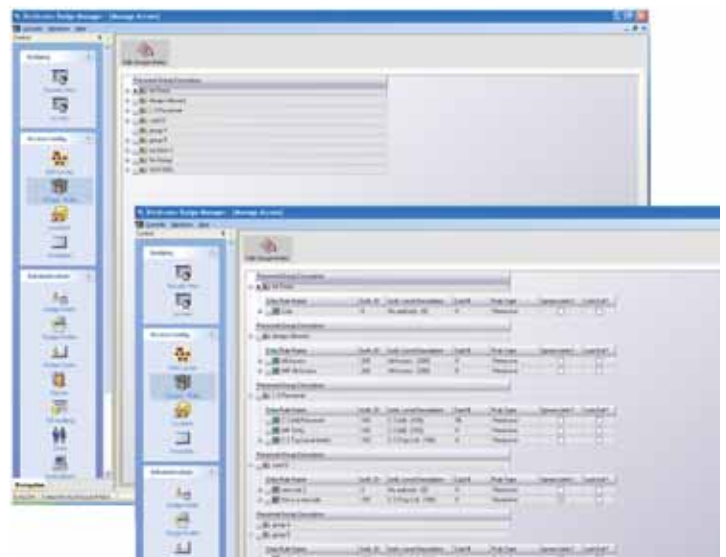
- Easily searchable, enterprise view of all badgeholders in the database.
- “Tree-View” of all locations and associated groups with special emphasis on locations to which badgeholder has access.
- Properties of highlighted location are available to badging administrator.



#### Manage Access View

The system administrator has a complete view of all groups and card rules in the system.

- Tree-view of all rules, associated schedules and other characteristics of each rule.
- Complete view of all locations to which group members have access – including locations inherited because of authorization levels.



# Vindicator Badge Manager 3

## Enhancements for People Management

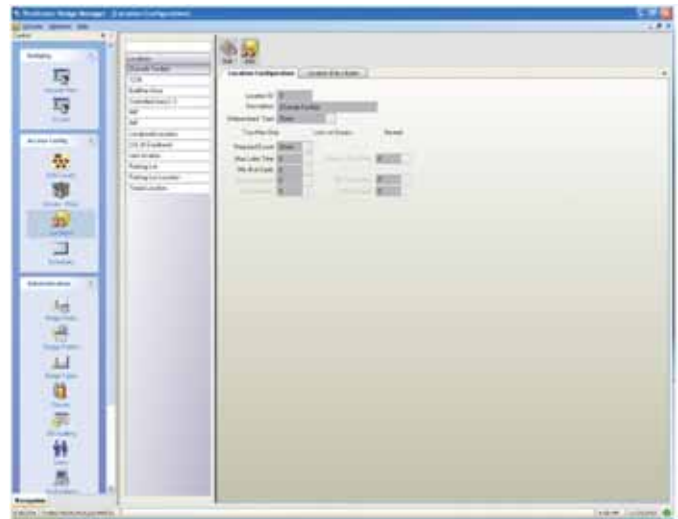
### BENEFITS

---

#### Location Configuration

Each location can be graphically configured to meet the operational needs of your team and facility.

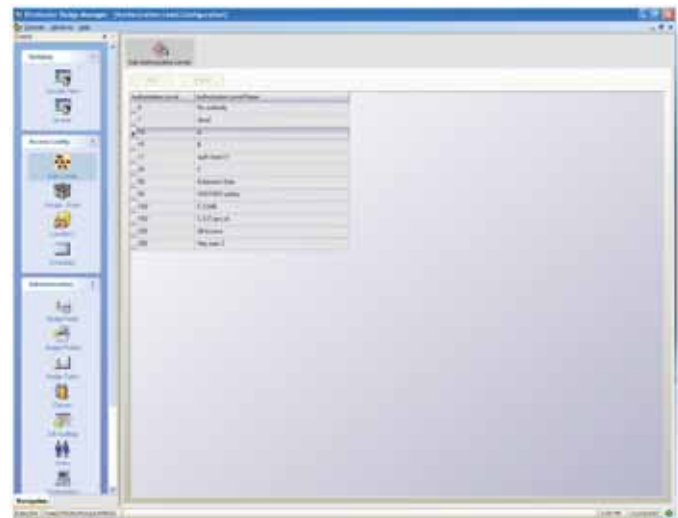
- Location details can be modified to suit the needs of your security policy.
- New locations can be created as easily as right clicking or selecting the “Add” button.



#### Authorization Level Maintenance

Overall system reliability and site security is enhanced by authorization levels—the first level of priority in determining whether a badgeholder can access a location. Each level is created and described through a user-friendly graphical interface.

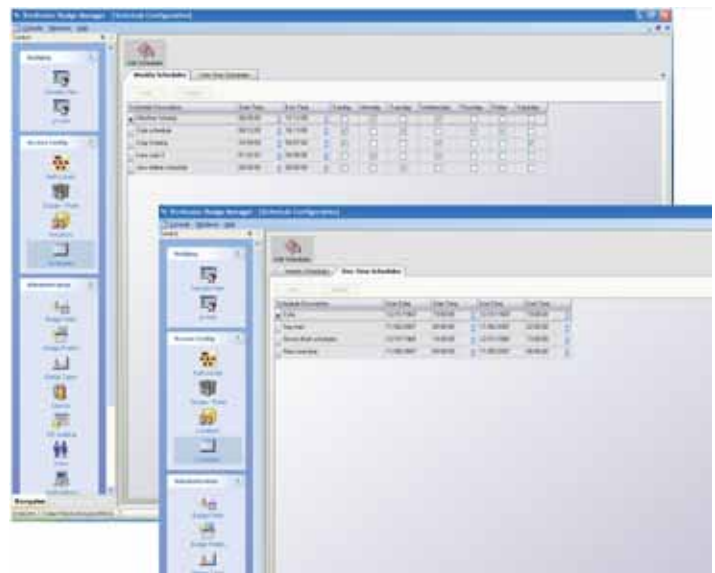
- All available authorization levels are visible along with descriptions.



#### Integrated Schedule Creation and Maintenance

Capture digital photo and signature for badgeholder as demographic information is being entered.

- Weekly and one-time schedules are visualized on Badge Manager for easy understanding and modification.
- Schedule changes are synchronized to the V<sup>6</sup> for seamless operation.



# Vindicator Badge Manager 3

## Enhancements for People Management

### SPECIFICATIONS

#### Badge Manager Specifications

- Operating Database MS SQL 2012
- Up to four simultaneous connections to any single V<sup>5</sup> ACS
- >40,000 badges (per badge station)<sup>1</sup>
- FIPS 201-2 Compliant
- 256 V<sup>5</sup> authority levels<sup>1</sup>
- Unlimited user defined classes<sup>2</sup>
- Unlimited user defined workstations<sup>2</sup>
- Unlimited user defined badge types<sup>2</sup>
- Database auditing
- Database reporting
- Intel Core I7 Processor, Win 7 or 10 64 bit OS, MS Office 2010 Pro, 16GB RAM, 2x 1000GB HD
- 256 V<sup>5</sup> user groups<sup>1</sup>
- Supports double-sided badge printing
- Supports magnetic stripe encoding

### ORDERING

#### System Components

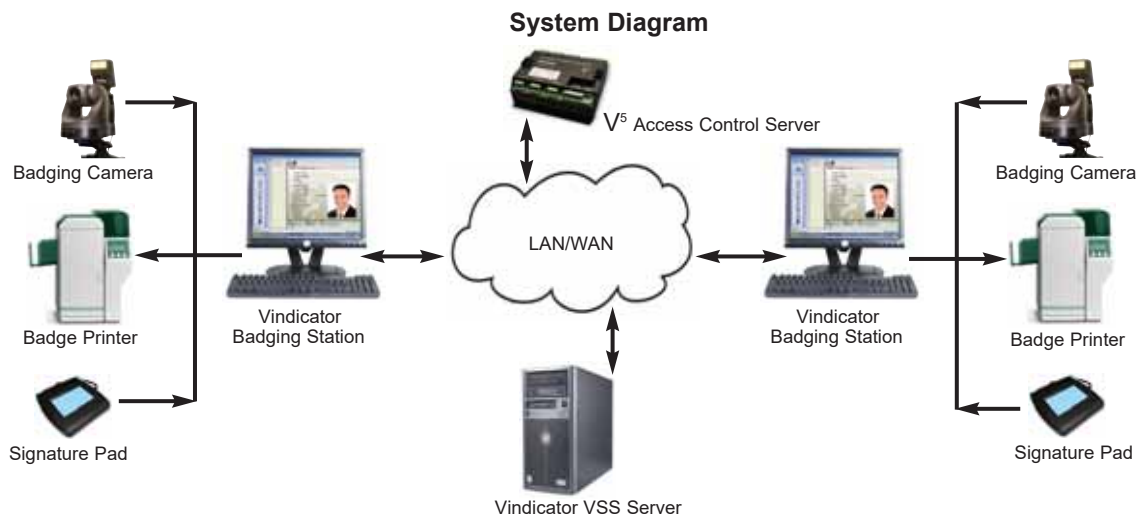
- 548-53000-01 AE VBM 3 Client Workstation (Win 7)
- 548-53000-11 AE VBM 3 Client Workstation (Win 10)
- 548-53100-01 AE VBM 3 SCIF Workstation (Win 7)
- 548-53100-11 AE VBM 3 SCIF Workstation (Win 10)
- 548-53400-01 AE VBM 3 / VCC 2 SCIF Workstation (Win 7)
- 548-53400-11 AE VBM 3 / VCC 2 SCIF Workstation (Win 10)
- 548-63000-01 SE VBM 3 Client Workstation (Win 7)
- 548-63000-11 SE VBM 3 Client Workstation (Win 10)
- 548-63100-01 SE VBM 3 SCIF Workstation (Win 7)
- 548-63100-11 SE VBM 3 SCIF Workstation (Win 10)
- 548-63400-01 SE VBM 3 / VCC 2 SCIF Workstation (Win 7)
- 548-63400-11 SE VBM 3 / VCC 2 SCIF Workstation (Win 10)

#### Additional Services Available

Please contact a Honeywell representative for details.

- Custom Badge Configuration Services
- Custom Database Entry and Conversion Services
- System Support and Preventive Maintenance Services
- Security Design and Configuration Services

<sup>1</sup> Minimum specification. Varies with configuration and storage options. Limited only by MSDE/MSSQL DB size.



For more information: [www.honeywellvindicator.com](http://www.honeywellvindicator.com)

#### Honeywell Security Group

Honeywell Vindicator Technologies  
3019 Alvin Devane Blvd, Bldg. 4, Suite  
430 Austin, TX 78741  
1.512.301.8400 (sales)  
1.800.367.1662 (support)  
[www.honeywell.com](http://www.honeywell.com)

# Honeywell