

VEHICLETRACE™ EDGE APPLICATION LICENSE

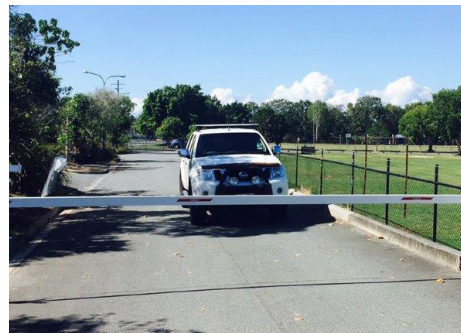
Video Analytic for License Plate Recognition

The VehicleTrace application by Honeywell is a high performance vehicle license plate detection and recognition engine that runs on the edge.

It supports more than 190 countries with reliable performance over a wide range of plate types, orientations and environmental conditions. Typical uses include access control at site entrances, car park monitoring, and scenarios where vehicles travel at low speeds.

Running on supported Honeywell cameras, VehicleTrace delivers ONVIF style events for easy integration with head-end software. Combined with Honeywell's iFTE platform, license plate events can be viewed and searched by central station operators for efficient site management. Honeywell's MAXPRO® VMS augments this basic detection and reporting functionality with full featured license plate searches, and support for black- and white-listed plates. Users can program the system to raise an alert when VIP guests arrive, or to send an alarm when a known offender visits the site. Searching through recorded footage for a vehicle of interest is also simplified with the ability to search for license plate metadata quickly and easily.

VehicleTrace is available as an uploadable module from Honeywell MyWebTech pages or as pre-configured, pre-licensed LPR camera.



LICENSING

Perpetual licenses are available and trial licenses are available free of charge. Speak to your salesperson for details. You can visit mywebtech.honeywell.com to download the software and for information on how to activate the product once you have obtained a credit token containing your license.

FEATURES AND BENEFITS

- Detects up to 2 lanes of vehicles, and up to 8 plates in the view
- Character height adjustment permits optimum results over a range of capture distances
- Wide tolerance on the angle of tilted license plates
- Wide tolerance on the approach angle of vehicles
- Wide tolerance on the orientation of non-horizontal plates
- Supports Latin, Hebrew and Arabic alphabets, enabling support for >190 countries
- Built-in grammar checker can identify the license plate's country from up to 6 selected countries
- Supports square plates as well as rectangular
- Supports reading plates with either dark or light characters
- ONVIF-based event metadata is easily integrated into different head-ends
- Designed for site entrance applications with vehicle speeds up to 50km/h (31mph)
- Highly accurate

Honeywell

VEHICLETRACE™ EDGE APPLICATION LICENSE

SPECIFICATIONS	
MINIMUM CHARACTER HEIGHT	2% of image height
MAXIMUM CHARACTER HEIGHT	10% of image height
MAX ROTATION ABOUT X-AXIS (PITCH)	± 35°
MAX ROTATION ABOUT Y-AXIS (YAW)	± 40°
MAX ROTATION ABOUT Z-AXIS (ROLL) ±	± 35°
COUNTRY SUPPORT	Over 190 countries (please refer to supported country list)
ALPHABET SUPPORT	Latin, Hebrew, Arabic
COUNTRY GRAMMAR CHECK	Can be enabled for up to 6 countries
MULTIPLE LINE PLATES*	1 and 2 line plates supported
PLATE COLOURS	Dark characters on light background, light on dark or both
MAXIMUM PLATES PER IMAGE	8
EVENT METADATA	ONVIF event for every plate detected, containing: <ul style="list-style-type: none"> • Plate number • Country (if grammar check enabled) • Confidence • Number of plate lines • Plate bounding box
ACCURACY	97.5% - 99.7% based on real world parking applications*
INTEGRATION	Fully supported by Maxpro R600

* Real world accuracy is subject to environmental conditions, and the license plates used, so performance will vary. Accuracy claims by manufacturers cannot be compared directly unless the test conditions are identical and unbiased.

ORDERING

The software can be downloaded from Honeywell's MyWebTech pages. Licenses are available through your normal sales channels. The part numbers for the perpetual license and for the free demonstration license are shown below.

PART NUMBER	DESCRIPTION
49975920	VehicleTrace Edge 60-day demonstration license
49975921	VehicleTrace Edge perpetual license

COMPATIBLE CAMERAS

VehicleTrace is available for upload onto the following Honeywell camera.

MODEL	DESCRIPTION
HBL6GR2	4.1-16.4mm, rugged bullet camera

VehicleTrace is also available in a pre-configured, pre-licensed package.

MODEL	DESCRIPTION
HBL6GR2-LPR	4.1-16.4mm, rugged bullet camera with VehicleTrace and licence pre-installed

For more information

www.honeywell.com/security

Honeywell Commercial Security

715 Peachtree St. NE
 Atlanta, GA 30308
 1.800.323.4576
www.honeywell.com

ADPRO and IntrusionTrace are trademarks of Honeywell. Honeywell reserves the right, without notification, to make changes in product design or specifications.

HSV-LPR-03-US(1219)DS-Z
 © 2019 Honeywell International Inc.

FLEXIBLE ALGORITHMS DEAL WITH A VARIETY OF PLATES



White letters on dark backgrounds



Dark letters on a light backgrounds



Vehicle approach angles



Double line license plates



QUICK AND EASY SETUP

- Purchase the HBL6GR2-LPR kit
- Position the camera for optimum 24/7 view
- Tailor to your application using the one-page configuration
- Connect to MAXPRO® VMS for a fully integrated solution

FULLY INTEGRATED WITH MAXPRO VMS

- Black/white lists
- Search on license plate
- Review video at time of entry

