

# PASSPOINT PLUS

The PassPoint family of products has now been expanded with PassPoint PLUS, the enhanced version of the widely acclaimed PassPoint Express. Like PassPoint Express, PLUS continues to offer powerful simplicity in setup and maintenance, which provides major savings in materials and labor. PLUS is a full-featured access control system priced at the cost of systems with far fewer capabilities and features. This is truly an all in one package.



## **BENEFITS AND FEATURES**

### **BADGING**

- Custom Photo ID Badge design software and twain compatibility means there are no additional expensive software packages to buy
- Place card holder information or bar codes on ID badges
- Card holder's picture displays based on an event

### **FLOOR PLAN GRAPHICS**

- Dynamic 3-D view with real-time maps provide visual status of the facility
- Controls system devices from the floor plan view
- No need to go through multiple screens to unlock a door
- Built-in Floor Plan Designer

### **REPORTING ENHANCEMENTS**

- Scheduled reports do not require manual intervention which saves time and money
- Run a report from archived events to find out what events took place last month
- Reports available via internet for easy access

### **REAL-TIME ALARM MONITORING**

- User-defined instructions reduce training time for system operators
- Event reports will show annotations, forcing guards to acknowledge an event
- Recognizing important events is easier by adding colors and sounds
- Event notification without system operator intervention via numeric/alphanumeric pager, email, or website posting

### **PASSPOINT DIRECT**

- Provides updates and the latest system news via the internet
- Automatic notification from user defined web server

### **ADDITIONAL FEATURES**

- Magnetic stripe (ABA Track 2) support allows you to retro-fit existing installations or generate a unique format for a new customer
- Batches of card holders can be modified quickly and easily, eliminating tedious, repetitive card holder data modification



# PASSPOINT PLUS



## DYNAMIC FLOOR PLAN GRAPHICS

- Dynamic 3-D view
- Control actions right from the floor plan
- Zoom-in to additional maps
- Built-in Floor Plan Designer



## PHOTO-ID BADGING

- Custom badge designer
- Uses your active database in design mode
- Visual Verification Mode (Grant or deny access after a card is presented)
- Twain compatible

## THE HEART OF THE SYSTEM

PassPoint PLUS is bundled in complete kits with everything needed for a two-door access system. The PPLUSASK Access Starter Kit consists of:

## MLB-MAIN LOGIC BOARD

The MLB is the main controller of the access control system. It holds the system configuration information, card database, and event log. It includes a real time clock used to validate schedules and provide a time and date stamp for events. The MLB also provides two input zones and one form C relay output.

## DCM-DOOR CONTROL MODULE

The DCM provides all of the inputs and outputs necessary to manage up to two doors of access control. Two supervised form C relays, two trigger outputs, and four supervised zone inputs (for managing door status and egress) are supplied on-board.

## POWER SUPPLY

The power supply produces a nominal 12 VDC at 1.8 ampere when connected to the supplied 18 VAC transformer. It has sufficient power to run the MLB, DCM, two card readers, and two door locks (rated 12 VDC at < 450 mA each).

## SIMPLE LOW COST SYSTEM EXPANSION

PassPoint delivers the absolute lowest cost for expansion. You save hundreds of dollars per door on wiring, labor and equipment.

## DEK-DOOR EXPANSION KIT

The DEK includes the materials you need to expand your existing PassPoint Access Control System. Each single kit provides the basic equipment for an additional one or two-door installation. It contains a PassPoint DCM and power supply combination that is pre-mounted in a metal-backed box and an 18 VAC transformer is also included.



## REAL-TIME ALARM MONITORING

- See Alarms and Events as they happen!
- Route Alarms and Events through
  - Alpha or Numeric Pager
  - Email
  - Internet Website
  - Add sound or colored events
  - Annotate each event
  - Leave detailed instructions upon event

# PASSPOINT EXPRESS

## PASSPOINT EXPRESS

PassPoint Express is the powerful base that is the foundation for PassPoint PLUS. Express is designed to provide you with the lowest cost and simplest access control system that will expand easily for the growing customer.

## ECHELON LONWORKS®

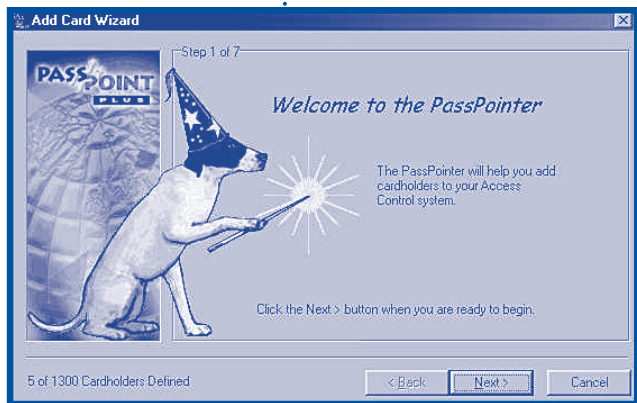
- For quick and easy service near access points (doors) LonWorks allows modules to be conveniently distributed throughout the facility
- LonWorks requires inexpensive, polarity insensitive, unshielded twisted pair wiring between panels
- Using Bus Topology
  - Up to 4000' using 18 AWG/2 conductor wiring (recommended) or
  - Up to 8000' using 16 AWG/2 conductor wiring
- Using Free Topology (star, loop, or loop/bus combination)
  - Up to 1500' using 20-22 AWG/2 conductor wiring
- New modules are enrolled using a plug and play type of operation (no dip switches)
- Major reduction of installation costs for wire, labor, equipment and programming

## MAINTENANCE AND REPORTING

- Configuration Wizards walk the user through the system, simplifying otherwise complex tasks
- Save on travel costs and generate revenue with remote service and reporting
- Save time by using the systems many pre-configured reports (hourly, daily, weekly)
- In the event of power loss all configurations and transaction data are maintained, because flash memory is used
- Multiple reader technologies and formats, make PassPoint ideal for retro-fit installations

## POWER SUPPLY

- Power supply in the unit has sufficient power for readers, logic boards and locks
- Power supply monitors the conditions of the battery, in the event of AC power loss or low-battery a report is made to the system
- No need for extra power supplies on a new installation



## WIZARDS

- Easy to use
- Quickly setup system
  - Panel Configuration
  - Software Configuration
  - Card Holders
  - Hardware Enrollment



# PASSPOINT PLUS

## PC REQUIREMENTS

### Operating System –

Windows 95, 98, or NT 4.0

**IBM Compatible PC** – Intel® Pentium Processor® II (200 mHz)

**Disk space** – 80 MB Hard drive space available with 32 MB of RAM

**Monitor** – SVGA video display 800 x 600 resolution (256 colors)

**Printer** – Configured printer for reporting

**Mouse**

## PANEL SPECIFICATIONS

**SIZE** 14.5" H x 12.5" W x 3" D

**POWER** 18 VAC 50 VA or 12 VDC 1.8 amps

**TEMPERATURE** 35°F to 110°F (2°C to 43°C)  
Humidity 90% max. non condensing

## ORDERING INFORMATION

- PTPLUSASK** PLUS Access Starter Kit
- PTPLUSBSK** PLUS Basic Starter Kit (without cards or readers)
- PTPLUSUG2** PassPoint PLUS Software UPGRADE
- PTASKPROX** Access Starter Kit
- PTBSK** Basic Starter Kit (without cards or readers)

## ADDITIONAL EQUIPMENT

- PTDEK** Door Expansion Kit
- PTQRM** Quad Relay Module
- PTZIM** Zone Input Module
- PTVGM** Vista Gateway Module
- PTCEK** Card Enrollment Kit
- PTCANPOWER** Enclosure with power supply, suitable for up to two modules
- PTPROX** Proximity Reader
- PTPROX25** Prox. Cards (25) pcs.

Consult your Sales Representative for more information.

## VGM-ADEMCO VISTA GATEWAY MODULE

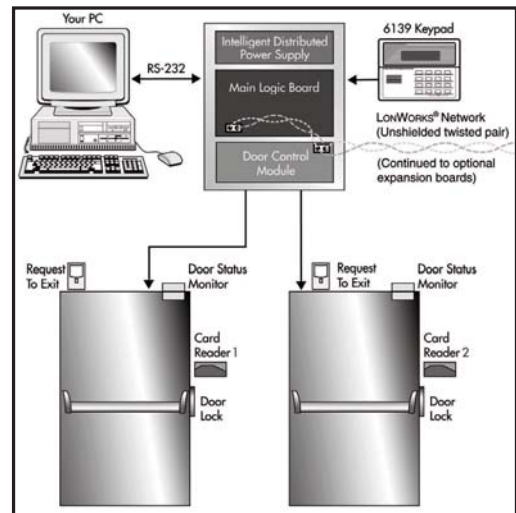
Take your Access Control installation to the next level with the integrated Fire and Burglary features of the Vista system. The VGM intelligently links the power of PassPoint with the established feature set of the Vista 128 series panels. **A tremendous business opportunity** exists by offering the flexibility to integrate these two powerful systems into one homogeneous system that is simple to program and maintain. **Imagine the potential revenues when you install a commercial Vista panel and can offer an integrated Access Control system as an add-on for your customer.**

## INTEGRATION FEATURES

- Provides interactive integration between ADEMCO Vista and PassPoint Access Control
- No complex wiring between burglary and access means simple installation
- Map your access points into the Vista system
- Reduces false alarms by prohibiting access until the system is disarmed or by card swipe that will arm/disarm the system
- Use your Vista wireless key to gain access
- Transmit Access Control point contact ID codes to a central station

## PLUS Access Starter Kit (PTPLUSASK) contains:

- System enclosure - including cam-lock
- Intelligent distributed power supply
- Main Logic Board (MLB)
- Door Control Module (DCM)
- Wall transformer - 18 VAC - 50 VA
- ADEMCO 6139 Keypad/Display
- Two card readers (proximity type)
- 50 Proximity cards
- PassPoint Quick-Start Guide
- Cable for PC connection, RS-232 (6' long)
- PassPoint PLUS (Windows-based) software package
- Two year warranty



CAPACITY	SYSTEM FEATURE
2000	CARD HOLDERS
7000	EVENTS
32	DOORS OF ACCESS
33	RELAY OUTPUTS
32	TRIGGER POINTS
66	ZONE INPUT POINTS
64	TIME SCHEDULES
32	HOLIDAYS
128	ACCESS GROUP LEVELS

5007 South Howell Ave.  
Milwaukee, WI 53207  
www.nciaccess.com

Tel: (414) 769-5980  
(800) 323-4576  
Fax: (414) 769-5989

**ADEMCO**  
**GROUP**  
INTEGRATED SYSTEMS

LowWorks® is a registered trademark of Echelon Corporation in the United States and/or other countries. Intel® and Pentium® are registered trademarks of the Intel Corporation in the United States and/or other countries. Microsoft and Windows are either trademarks or registered trademarks of Microsoft Corporation in the United States and/or other countries. Specifications subject to change without notice. © 2000 Northern Computers, Inc. All rights reserved.