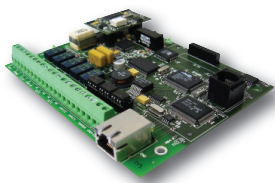
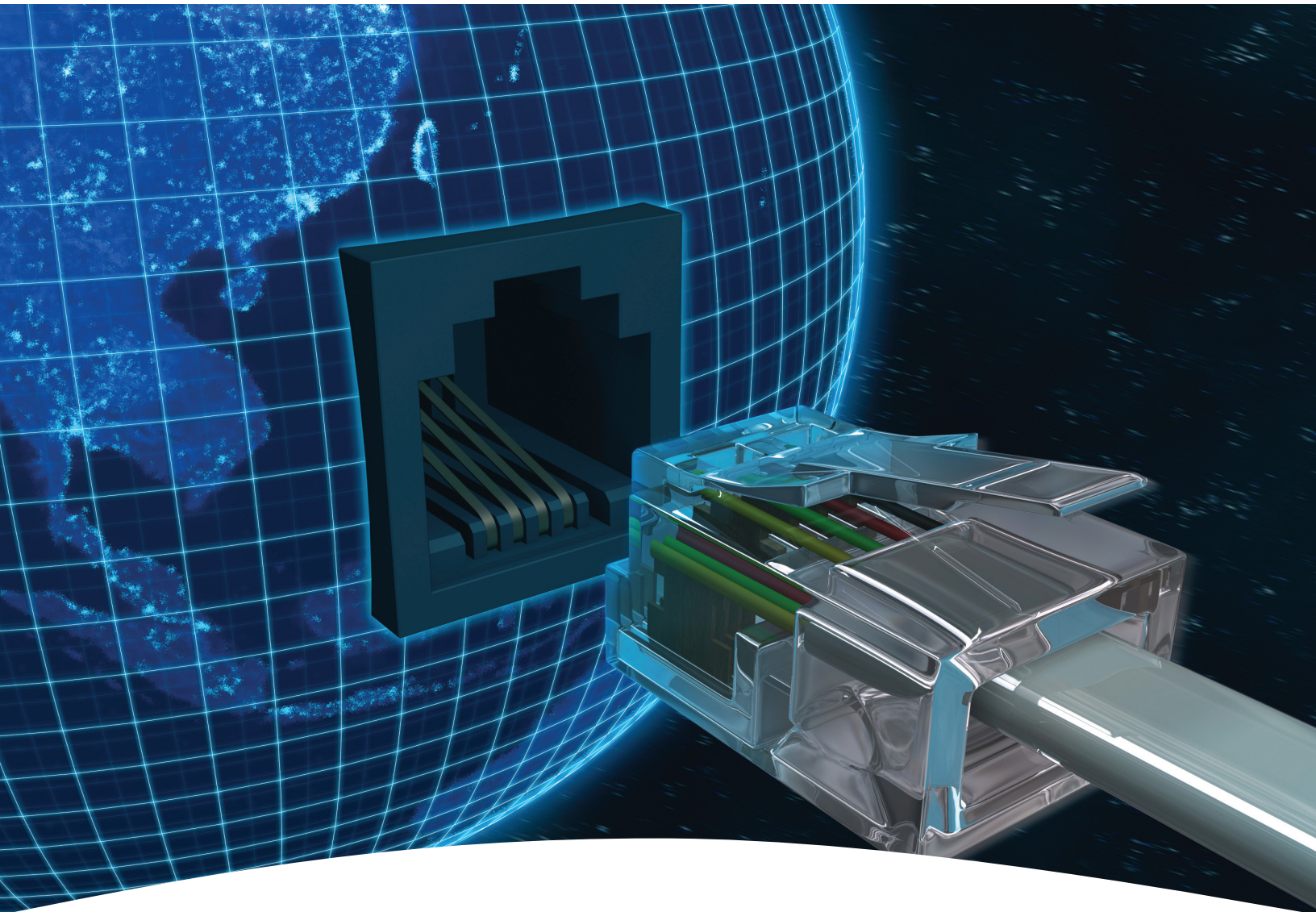


MIP-2/2UD

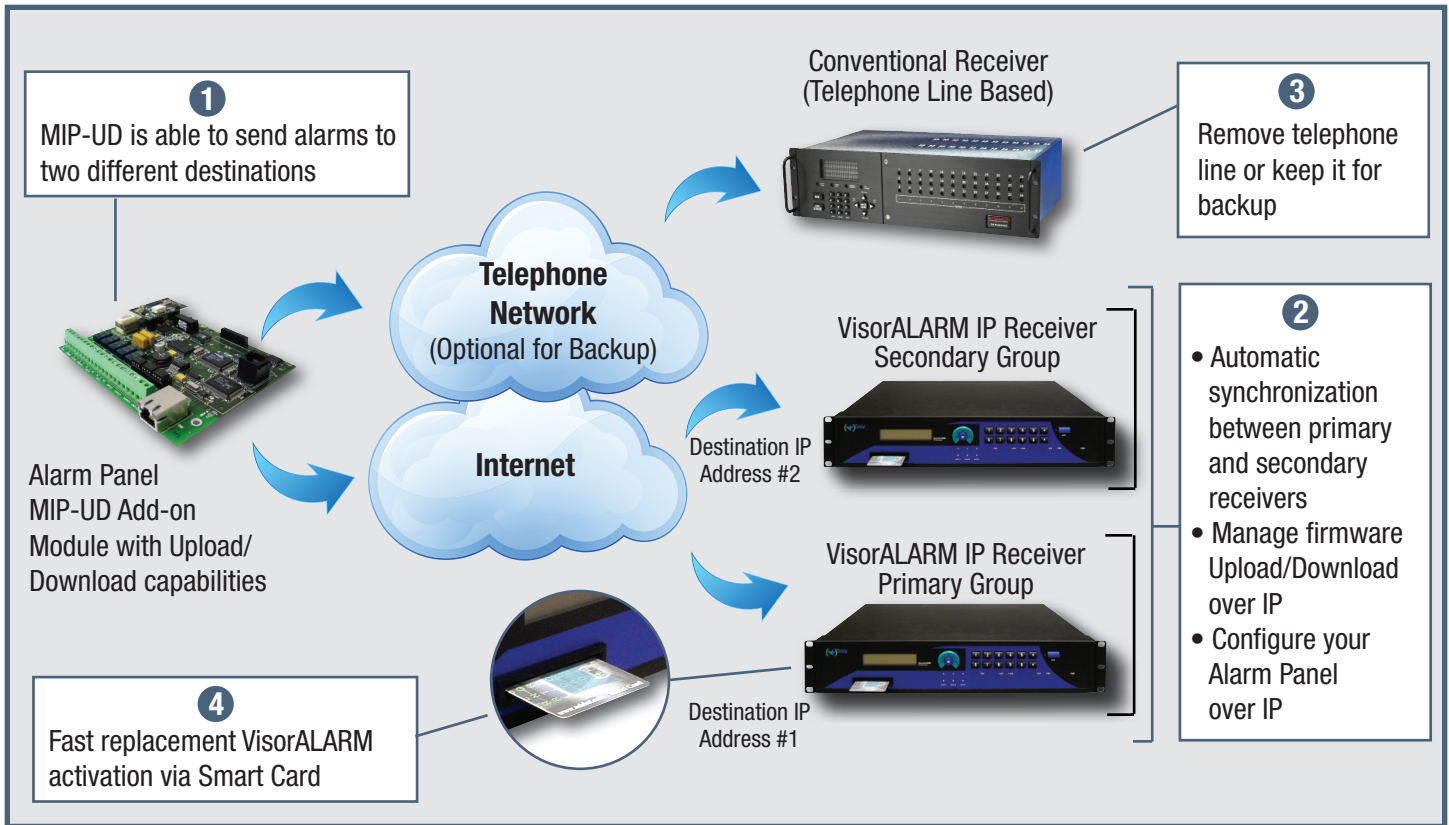
IP Communicator for Burglar Alarm Panels



The MIP-2/UD is a simple communications device that allows the transmission of alarms generated by a conventional control panel through any kind of IP network at the same time that it keeps the standard telephone line as a back-up mechanism.

Designed to work with most of the already installed control panels, the MIP-2/2UD allows for a faster and more economic alarm transmission, improving response times, decreasing costs and offering value added features such as the supervised line functionality that allows the central station to detect if any of the alarm panels go off-line.

Honeywell



Features

- Allows any Contact-ID Burglar alarm panel to transmit alarms over IP networks
- Saves the cost of an 800 number to receive alarms. Transmission is done through a flat rate Internet connection that is shared with other devices
- Eliminates the cost of two dedicated phone lines. Only the customer's shared IP equipment is required
- Can use newer low-cost, non-analog, digital telephone services such as cable or fiber optics
- Increases connection supervision to the central station from the once-a-day test signal to once every 30 - 90 seconds
- Requires no change to the existing panel configuration. The IP Communicator connects directly to the primary and secondary analog panel telephone ports
- Fast alarm transmission (less than 1 second transmission time) for better response times to burglar alarms
- Works over any type of customer-provided Ethernet 10/100 Base network connection (LAN or WAN), DSL modem or cable modem.

For more information on Central Stations, please visit: <http://www.honeywellpower.com/comm-mip-2UD.html>

Find out more

www.honeywellpower.com or scan this QR Code:



Honeywell Power
Honeywell International Inc.
12 Clintonville Road
Northford, CT 06472
Tel: 203.484.7161
Fax: 203.484.7118
www.honeywell.com

February 2014
Printed in U.S.A.
© 2013 Honeywell International Inc.

Honeywell