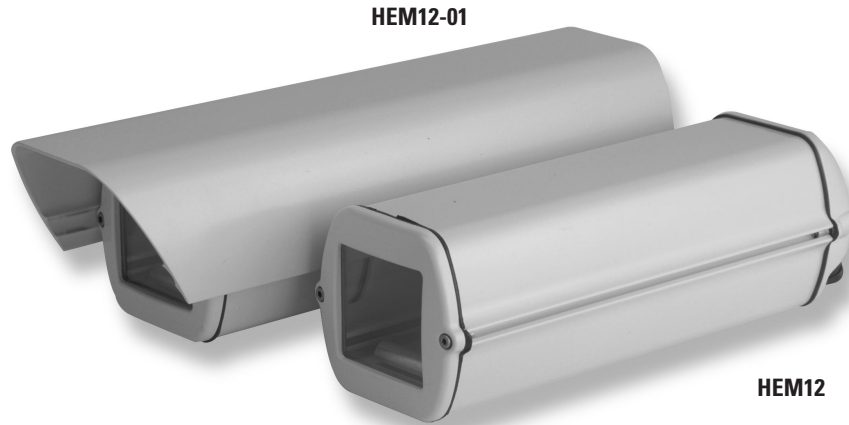


# HEM12

**MEDIUM ENVIRONMENTAL HOUSING**



The HEM12 series is a stylish and functionally designed camera enclosure with features such as snap-on sunshield and adjustable mounting track that allow easy installation.

To ensure proper camera/lens adjustment, the camera remains stationary when opening the housing for camera service.

It is constructed of die-cast and extruded aluminum with an epoxy powder coating making them corrosion resistant. Weatherproofing and dustproofing are accomplished with durable neoprene end gaskets making housings suitable for all indoor and outdoor applications.

This housing can accommodate 1/2" and 1/3" CCD cameras with fixed focal length or small zoom lenses.

- Contemporary design
- Die-cast and extruded aluminum construction
- Adjustable mounting track
- Hinged/removable body for easy servicing
- Snap-on sunshield option
- Indoor/outdoor installations
- Epoxy powder coated for corrosion resistance
- Dustproof, IP65 weatherproofing
- Pre-assembled heater & blower models available
- Cost effective
- 2-year limited warranty



# HEM12

## TECHNICAL SPECIFICATIONS

### MODELS

<b>HEM12</b>	Indoor/outdoor enclosure for 1/2" and 1/3" CCD cameras with fixed focal length lenses or small zoom lenses
<b>HEM12-01</b>	Same as HEM12 except supplied with snap-on sunshield
<b>HEM12-02</b>	Same as HEM12 except supplied with snap-on sunshield and 24V ac heater
<b>HEM12-03</b>	Same as HEM12 except supplied with snap-on sunshield, 24V ac heater and 24V ac blower

### MECHANICAL

Camera Mounting	Slotted camera sled
Max Camera Size	Accommodates camera/lens combinations (including BNC) up to: HEM12/HEM 12-01 2.7W x 2.8H x 12L in HEM12-02/HEM12-03 2.7W x 2.8H x 11L in
Viewing Area:	
HEM12/HEM 12-01	2.6W x 2.4H in
HEM12-02/HEM12-03	2.6W x 2.4H in
Viewing Window	Clear 1/8" double-density glass
Cable Entry	Two compression fittings
Dimensions	See drawings
Weight:	
HEM12	3.0 lbs (1.4kg)
HEM12-01/02/03	4.1 lbs (1.9kg)

### GENERAL

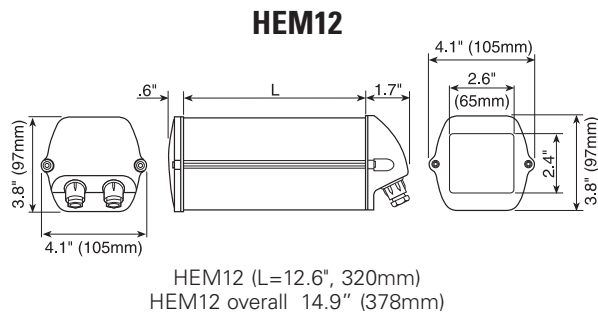
Construction	Extruded and die-cast aluminum
Finish	Almond color, epoxy powder coating
Environment	Indoor/outdoor

### OPTIONS

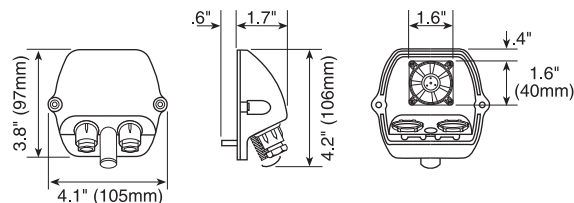
HEM12-SS	Snap-on sunshield for HEM12
HEM10-BK	Thermostat controlled blower kit for HEM12, 24V ac (regulated to 24V dc), 3.4 Watts
HEM12-HK	Thermostat controlled heater kit for HEM12, 24V ac, 20W

### RECOMMENDED MOUNTS

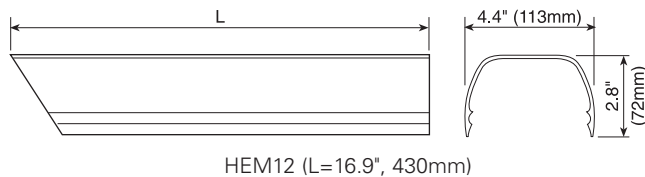
<b>WBM</b>	Recommended medium-duty wall mount with integrated ball joint head, 8" long. Supports up to 35 lbs
<b>WB+BJ</b>	Heavy-duty wall mount with integrated ball joint, 12" long. Supports up to 55 lbs
<b>CM5</b>	Ceiling "J" mount with integrated ball joint, 15.4" long. Supports up to 40 lbs
<b>CMP</b>	20" extension for CM5 ceiling mount
<b>CP</b>	Reinforcing plate adapter for WBM & WB+BJ, 5.1W x 6.3H in.
<b>CW</b>	Corner-mount adapter for WBM & WB+BJ
<b>SFP</b>	Pole-mount adapter for WBM & WB+BJ, adjustable for 3" to 5.5" poles



### HEM12-BK (Blower Kit)



### HEM12-SS (Sunshield)



*Design and specifications subject to change without notice.*

Conversion: 1" = 25.4mm  
Measurement conversions are approximate

#### Ultrak Worldwide Support Center:

1305 Waters Ridge Drive  
Lewisville, TX 75057  
(800) 796-2288 (972) 353-6500  
Fax (972) 353-6670

