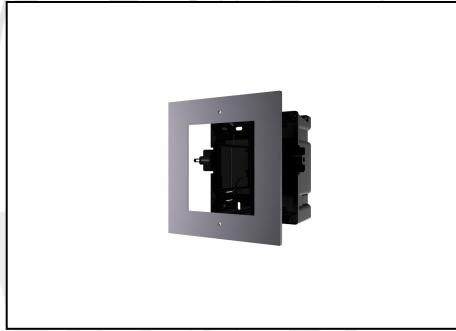


DS-KD-ACF1/Plastic Accessory Package



- 1 Flush mounting module brackets of modular door station: includes gang box, cover screws, lines, etc.
- Plastic material

▪ **Specification**

General	
Weight	Net weight: 195 g Gross weight: 366 g
Working temperature	-40 °C to 55 °C(-40 °F to 131 °F)
Working humidity	10% to 95%
Dimension (W × H × D)	Cover: 134 mm × 124 mm × 4 mm (5.28" × 4.88" × 0.16") Gang Box: 134 mm × 135 mm × 56 mm (5.28" × 5.31" × 2.20")
Material	Plastic

▪ **Available Model**

DS-KD-ACF1/Plastic

▪ **Accessory**



DS-KD8003-IME1



DS-KD8003Y-IME2



DS-KD8003-IME1(B)



DS-KD-PMR

Headquarters

No.555 Qianmo Road, Binjiang District,
Hangzhou 310051, China
T +86-571-8807-5998
www.hikvision.com



Follow us on social media to get the latest product and solution information.

