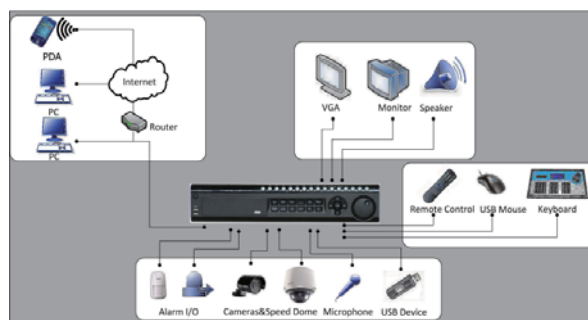


DS-9104/9108/9116HFI-S Standalone DVR



Key Features

- H.264 video compression
- 3 independent local video output (VGA, MAIN and AUX video/audio out)
- Up to 32 simultaneous users
- Advanced motion detection
- Easy back-up to USB and optical drives
- Support up to 8 SATA hard disk drives



Specifications

		DS-9116HFI-S	DS-9108HFI-S	DS-9104HFI-S
Video/Audio input	Video compression	H.264	H.264	H.264
	Video input	16-ch, BNC(1.0Vp-p, 75Ω), PAL/NTSC adaptive	8-ch, BNC(1.0Vp-p, 75Ω), PAL/NTSC adaptive	4-ch, BNC(1.0Vp-p, 75Ω), PAL/NTSC adaptive
	Audio compression	OggVorbis	OggVorbis	OggVorbis
	Audio input	16-ch, BNC(2Vp-p, 1kΩ)	8-ch, BNC(2Vp-p, 1kΩ)	4-ch, BNC(2Vp-p, 1kΩ)
	Voice talk input	2-ch, BNC(2Vp-p, 1kΩ)	2-ch, BNC(2Vp-p, 1kΩ)	2-ch, BNC(2Vp-p, 1kΩ)
Video/Audio output	Preview resolution	PAL:704×576 NTSC:704×480		
	VGA output	1, resolution: 1024×768/60Hz, 1024×768/70Hz, 1280×1024/60Hz		
	Recording resolution	4CIF/DCIF/2CIF/CIF/QCIF		
	Video output	2-ch, BNC(1.0Vp-p, 75Ω)		
	Frame rate	PAL: 25fps, NTSC: 30fps		
	Video bit rate	32Kbps~2048Kbps, or user-defined (Max. 6144Kbps)		
	Audio output	2-ch, BNC(linear electrical level, 600Ω)		
	Audio bit rate	16kbps		
Hard disk driver	Synchronous playback	4-ch		
	Interface type	8 SATA interface		
External interface	Capacity	Each interface supports more than 2TB capacity		
	Network interface	1, RJ45 10M/100M/1000M adaptive Ethernet interface		
	Serial interface	1 RS-232 interface (for parameters configuration, maintenance , transparent channel); 1 RS-485 interface (for PTZ control); 1 RS-485 keyboard interface (for special keyboard control)		
	USB interface	3, USB2.0		
	Alarm input	16-ch		
General	Alarm output	4-ch		
	Power supply	100~240VAC, 6.3A, 50~60Hz		
	Consumption	28W (without hard disk or DVD-R/W)		
	Working temperature	-10°C~+55°C		
	Working humidity	10%~90%		
	Chassis	19" standard 2U chassis		
	Dimension (mm)	450mm(D)×450mm(W)×95mm(H)		
Weight	≤8Kg (without hard disk or DVD-R/W)			