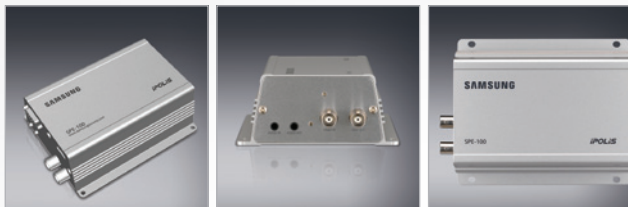


# Encoding at the Edge of your Network



1CH H.264 Network Video Encoder

## SPE-100



SPE-100 is a high performing video encoder that converts video from analog cameras on to IP network system leveraging existing cost-effective analog system creating a hybrid solution. Highly efficient H.264 compression technology and ONVIF standard compliant, SPE-100 is the perfect solution when there is a need for hybrid solution.

- Real-time 30(25)fps at high resolution(4CIF)
- Max.resolution : 704 x 480, 704 x 576(4CIF)
- H.264/MPEG-4/MJPEG triple codec
- Multiple streaming simultaneously
- Bi-directional audio, SD memory slot support
- ONVIF standard protocol support

# 1CH H.264 Network Video Encoder

# SPE-100

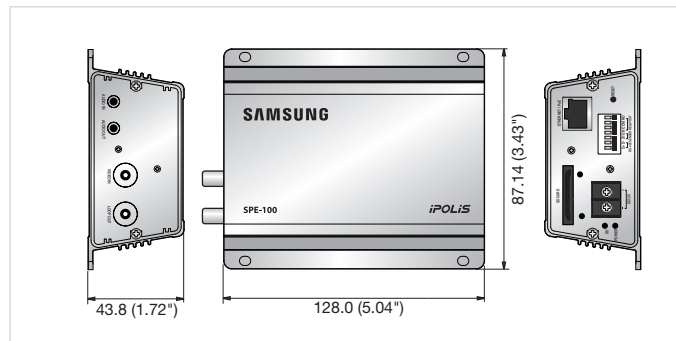


## Specifications

	SPE-100N	SPE-100P
<b>OPERATIONAL</b>		
Video In	CVBS : 1.0 Vp-p / 75Ω composite, NTSC/PAL auto detection	
Video Out	CVBS : 1.0 Vp-p / 75Ω composite, Loop out	
De-interlacing Filter	Built-in	
Event Trigger	Motion detection, Video loss, Tampering, Network disconnection	
Alarm I/O	Input 1ea / Output 1ea (Relay)	
Remote Control Interface	RS-485	
RS-485 Protocol	Samsung-T/E, Pelco-P/D, Panasonic, Honeywell, AD, Vicon, GE, Bosch, Sungjin	
<b>NETWORK</b>		
Ethernet	RJ-45 (10/100BASE-T)	
Video Compression Format	H.264, MPEG-4, MJPEG	
Resolution	704 x 480, 640 x 480, 352 x 240, 320 x 240	704 x 576, 640 x 480, 352 x 288, 320 x 240
Max. Framerate	30fps	25fps
Video Quality Adjustment	H.264, MPEG-4 : Compression level, Target bitrate level control, MJPEG : Quality level control	
Bitrate Control Method	H.264, MPEG-4 : CBR or VBR, MJPEG : VBR	
Streaming Capability	Multiple streaming (Up to 10 profiles)	
Audio I/O	1ea line in / 1ea Line out	
Audio Compression Format	G.711 u-law	
Audio Communication	Bi-directional audio	
IP	IPv4, IPv6	
Protocol	TCP/IP, UDP/IP, RTP(UDP), RTP(TCP), RTSP, NTP, HTTP, HTTPS, SSL, DHCP, PPPoE, FTP, SMTP, ICMP, IGMP, SNMPv1/v2c/v3(MIB-2), ARP, DNS, DDNS, QoS, UPnP	
Security	HTTPS(SSL) login authentication, Digest login authentication IP address filtering, User access log, 802.1x authentication	
Streaming Method	Unicast / Multicast	
Max. User Access	10 users at unicast mode	
Memory Slot	SD/SDHC memory slot	
ONVIF Conformance	Yes	
Web Viewer	Supported OS : Window XP / VISTA / 7, Mac OS X (10.7 or higher) Supported Browser : Internet Explorer (7.0 or higher), FireFox (9.0 or higher), Chrome (15.0 or higher), Safari (5.1 or higher)	
Central Management Software	SmartViewer 4.0, NET-i viewer	
<b>ENVIRONMENTAL</b>		
Operating Temperature / Humidity	-10°C ~ +50°C (+14°F ~ +122°F) / 20% ~ 80% RH	
<b>ELECTRICAL</b>		
Input Voltage / Current	12V DC, PoE (IEEE802.3af)	
Power Consumption	Max. 4W	
<b>MECHANICAL</b>		
Color / Material	Silver / Metal	
Dimensions (WxHxD)	128.0 x 43.8 x 87.14mm (5.04" x 1.72" x 3.43")	
Weight	391g (0.86 lb)	

## Dimensions

Unit : mm (inch)



The Eco mark represents Samsung Techwin's will to create environment-friendly products, and indicates that the product satisfies the EU RoHS Directive.

Design and specifications are subject to change without notice.

### ■ DISTRIBUTED BY

**SAMSUNG TECHWIN CO., LTD.** 701, Sampyeong-dong, Bundang-gu, Seongnam-si, Gyeonggi-do Korea 463-400  
Tel : +82-70-7147-8741~8749, 8752~8760 Fax : +82-31-8018-3745 www.samsungsecurity.com www.samsungcctv.com

**SAMSUNG TECHWIN AMERICA INC.**  
100 Challenger Rd., Suite 700 Ridgely Park, NJ 07660  
Toll Free : +1-877-213-1222 Direct : +1-201-325-6920  
Fax : +1-201-373-0124

**SAMSUNG TECHWIN EUROPE LTD.**  
2st floor No5, The Height, Brookland, Weybridge, Surrey, U.K.  
KT13 0NY  
Tel : +44-1932-82-6700 Fax : +44 1932 82 6701

**SHANGHAI SAMSUNG TECHWIN CO., LTD.**  
32F, Bk B, International Business Center,  
No. 391 Guiping Rd., Shanghai, China, 200233  
Tel : +86-21-5427-1155 Fax : +86-21-5423-5122



**SAMSUNG TECHWIN**