

# Low Light 30X PTZ Network Camera SNP-3300A

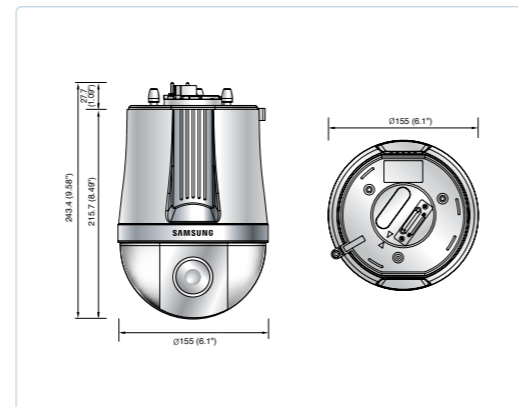


## Specifications

Mode	SNP-3300A(N)	SNP-3300A(P)
Power Source	24V AC (±10%)	
Power Consumption	Max. 18W	
Image Pick-up Device	1/4" Vertical double density interline CCD	
Total Pixels	811(H) x 508(V)	795(H) x 596(V)
Effective Pixels	768(H) x 494(V)	752(H) x 582(V)
Scanning System	2 : 1 Interlace	2 : 1 Interlace
	525 Lines / 60 Fields / 30 Frames	625 Lines / 50 Fields / 25 Frames
Synchronization	Internal / Line lock selectable	
Scanning Frequency	Horizontal : 15,734KHz / Vertical : 59.94Hz	
Horizontal Resolution	Horizontal : 15,625KHz / Vertical : 50Hz	
Video Output	1.0Vp-p / 75Ω (Video 0.714Vp-p, Sync 0.286Vp-p)	1.0Vp-p / 75Ω (Video 0.7Vp-p, Sync 0.3Vp-p)
Min. Illumination	0.08Lux@F1.6 (B/W mode) 0.003Lux@F1.6 (Sens-up mode)	
Wide Dynamic Range	52dB (128X)	
S / N Ratio (Y signal)	50dB (AGC off, Weight on)	
Day & Night	Color / B/W / Auto selectable (ICR filter change)	
White Balance	ATW / AWC / Manual selectable (1800°K ~ 10,500°K)	
Electronic Shutter Speed	Auto / Manual selectable (1/60 ~ 1/120,000)	Auto / Manual selectable (1/50 ~ 1/120,000)
SSNR	Low / Middle / High / Off selectable	
Motion Detection	On / Off selectable (Output via terminal)	
Privacy Function	On / Off selectable (8 Programmable zones)	
Preset Positions	128 Positions	
Digital Flip	Left / Right, Up / Down selectable	
Zoom Ratio	30X, f3.3 ~ 99.0mm (F1.6 ~ 3.7)	
Angle Field of View	Horizontal : Appr. 58.0°(Wide) to 2.22°(Tele) / Vertical : Appr. 44.8°(Wide) to 1.68°(Tele)	
Digital Zoom	Built-in (2X, 4X, 8X, Total 240X zoom)	
Rotation Angle	Pan : 360° Endless / Tilt : -4° ~ -184° (Digital flip)	
Rotation Speed	Pan : 240°/sec (64 step) / Tilt : 240°/sec (64 step)	
Video Channel	1 Input / 1 Output through BNC	
Hardware	CPU : Samsung ARM CPU (200MHz) OS : Embedded Linux	
Compression Method	MPEG-4 / JPEG selectable video compression, ADPCM audio compression	
Compression / Transmission Speed	Video : Max. VGA 30fps	Video : Max. VGA 25fps
Image Quality Control	5 levels	
Audio Input / Output	1 / 1	
Internet Browser	MS Internet Explorer ver 5.5 or higher	
Resolution	704 x 480, 704 x 240, 352 x 240	704 x 576, 704 x 288, 352 x 288
Security	Password (User authentication), Control message encryption	
DIO Supports	4 Sensor input, 2 Alarm output	
User Connection	20 Users	
Protocol Supported	HTTP, TCP/IP, PPPOE, FTP, SMTP, DHCP, DDNS, NTP	
Misc. Function	Event / Alarm, FTP / E-mail notification	
System Resource	32Bit RISC processor, 64MB SDRAM, 64MB flash, 512KB ROM	
Network Interface	10/100 Base-T Ethernet using RJ-45	
Viewer Application	Network management software / Web viewer	
DDNS	Support (xDSL, DHCP, Cable modem, etc)	
SDK	3rd Party SDK support	
Operating Temperature	0°C ~ +40°C	
Operating Humidity	30% ~ 80% RH	
Dimensions	Ø155(W) x 243.4(H)mm / Ø6.1"(W) x 9.58"(H)	
Weight	2.5Kg (5.51 lb)	

## Dimensions

Unit : mm (inch)



## Option (Accessories)



Connecting the world with the network!

iPOLiS Live broadcast of  
30X PTZ network camera is beginning.

Area Zoom function  
SNP-3300A

imagine Surveillance Beyond Time & Space

The SNP-3300A is an ultra low light PTZ network camera with a built-in 30X A/F zoom lens. The SNP-3300A is equipped with various functions including MPEG-4 /JPEG compression, fast 30fps VGA-class image transmission, an ultra low light level surveillance function, and WDR, ensuring a 24 hour optimum network connection anytime anywhere.



The Eco mark represents Samsung Techwin's will to create environment-friendly products, and indicates that the product satisfies the EU RoHS Directive.

Design and specifications are subject to change without notice.

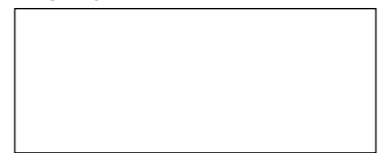


**SAMSUNG TECHWIN CO., LTD.**  
145-3, Sangdaewon 1-dong, Jungwon-gu, Seongnam-si, Gyeonggi-do Korea 462-703  
Tel : +82-31-740-8151-8 Fax : +82-31-740-8145  
www.samsungcctv.com

**SAMSUNG OPTO-ELECTRONICS UK, LTD.**  
Samsung House, 1000 Hillwood Drive,  
Hillwood Business Park Chertsey, Surrey KT16 0PS  
Tel : +44-1932-455312 Fax : +44-1932-455325

**TIANJIN SAMSUNG OPTO-ELECTRONICS CO., LTD.**  
No.9 Zhangheng St. Micro-Electronic Industrial  
Park, Jingang Rd. Tianjin P.R.China 300385  
Tel : +86-22-23887788-8503 Fax : +86-22-23887788-8505

■ DISTRIBUTED BY



I.D-0808



**SAMSUNG TECHWIN**



Real time connection via the **internet** anytime anywhere!

A large area can be captured at once, using the **240X zoom-in** function and high **speed pan/tilt** function.

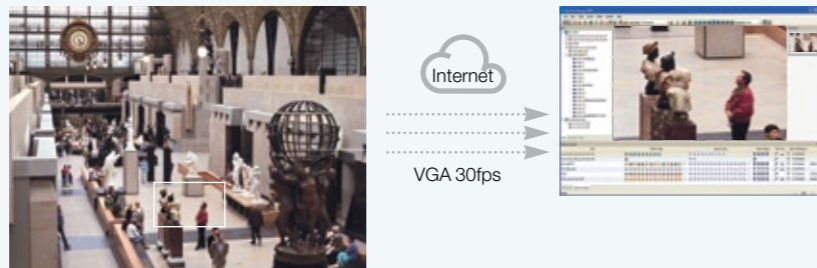


The SNP-3300A is a high performance PTZ network camera with a built-in 30X A/F zoom lens, which provides an ultra low light level surveillance function and an excellent WDR function. Images that are being monitored can be compressed using the MPEG-4 /JPEG method, and VGA-class high resolution images can be transmitted at 30fps in real time, anytime anywhere. The integration of various network functions, including the powerful "Network Manager" and web viewer, two-way audio, and remote PTZ control achieves complete network security.

Network integrated management for monitoring high tech manufacturing lines to urban areas!  
**Easy & Powerful 30X Network Monitoring**

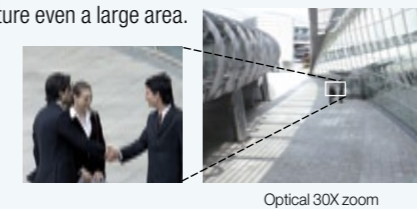
#### Supporting MPEG-4/JPEG compression, transmission of VGA-class 30fps

The SNP-3300A enables the user to select MPEG-4 or JPEG compression depending on the environment. The superb network performance allows real-time transmission of VGA-class high resolution images and achieves an output of 4-split images in analogue.



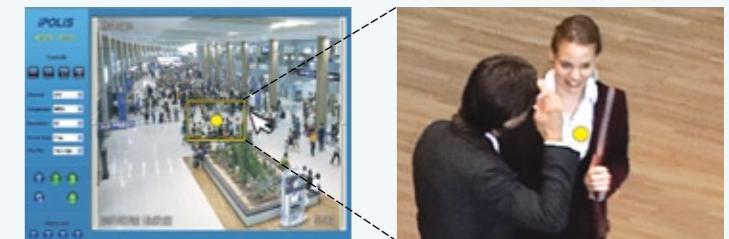
#### Optical 30X. Up to 240X zoom (3.3 ~ 99mm)

The SNP-3300A has a built-in 30X A/F zoom lens, and provides up to 240X magnification of surveillance areas. The SNP-3300A also has a high speed pan/tilt function to quickly capture even a large area.



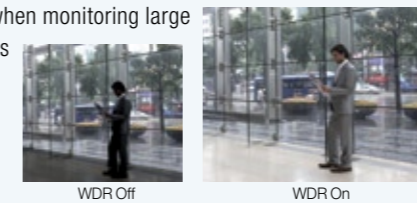
#### Area Zoom function

SNP-3300A supports a new remote PTZ feature, Area Zoom. With the area zoom feature, the user can drag the mouse over a desired area and the SNP-3300A will pan, tilt and zoom automatically to a selected area of an image up to 10x optically. This new feature gives user the ability to view an image quickly and accurately with a click of a mouse.



#### Supporting 126X WDR wide area backlight compensation

The SNP-3300A employs a delicate pixel unit analysis technique that enhances WDR performance by 126 times. The SNP-3300A provides clear images without interference from backlight when monitoring large lobbies and airport and bus terminals.



#### Additional function

- Supporting a remote PTZ control function and an alarm function
- Supporting dynamic IP and DDNS
- Two-way audio transmission
- Supporting 128 Preset and automatic surveillance functions
- Motion detection and privacy masking
- Convenient installation of various accessories

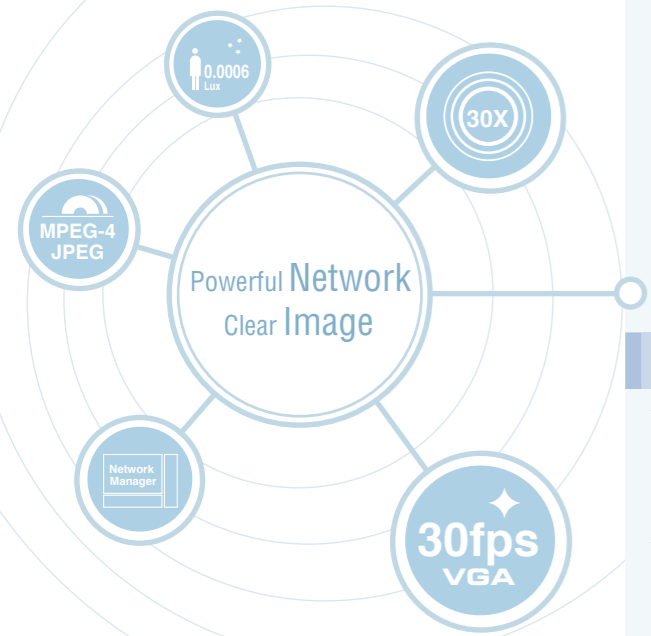
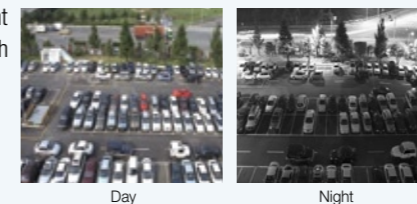
#### Powerful integrated management of up to 128 channels

The Exclusive "Network Manager" software(SNM-64S/P) offers a powerful function that enables the integrated management of up to 128 network and DVR units at a time. The Network Manager allows an enhanced alarm/event notification, a Map function, Max. 3 monitor connection, etc. The SNP-3300A also supports a Web Viewer that enable users to check the surveillance area at any-time, anywhere via internet without an application software.



#### Operating at an ultra low light of 0.003Lux and supporting an ICR Day & Night function

The SNP-3300A has a superb ultra low light level surveillance function that enables the user to observe a surveillance subject clearly, using the smallest amount of light, and also has an ICR Day & Night function that provides high quality images even at night.



**iPOLiS**  
 Low Light 30X PTZ Network Camera  
**SNP-3300A**