

# High Resolution Day & Night IR LED Dome Camera

## SIR-60

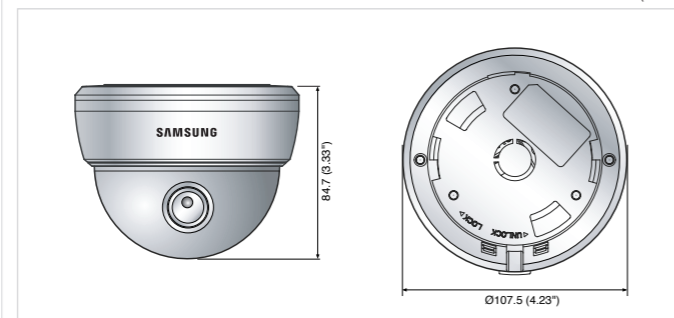


### Specifications

	SIR-60N	SIR-60P
<b>ELECTRICAL</b>		
Input Voltage	12V DC	
Power Consumption	Max. 3.5W (LED On)	
<b>VIDEO</b>		
Imaging Device	1/3" Super HAD CCD	
Total Pixels	811(H) x 508(V)	795(H) x 596(V)
Effective Pixels	768(H) x 494(V)	752(H) x 582(V)
Scanning System	2 : 1 Interlace	
Synchronization	Internal / Line lock	
Frequency	H : 15.734KHz / V : 59.94Hz	H : 15.625KHz / V : 50Hz
Horizontal Resolution	Color : 580TV lines (Min.) / B/W : 700TV lines (Min.)	
Min. Illumination	Color : 0.15Lux (50 IRE@F1.2), 0.0003Lux (Sens-up, 512X) B/W : 0Lux (LED on)	
S / N (Y signal)	52dB	
Video Output	CVBS : 1.0Vp-p / 75	
<b>LENS</b>		
Zoom Ratio	Fixed	
Focal Length	3.6mm	
Max. Aperture Ratio	F2.0	
Min. Object Distance	0.4m (1.31ft)	
Angular Field of View	H : 71°, V : 52°	
<b>PAN / TILT / ROTATE</b>		
Pan Range	0° ~ 352°	
Tilt Range	0° ~ 75°	
Rotate Range	0° ~ 348°	
<b>OPERATIONAL</b>		
On Screen Display	Built-In (Currently supported language : English, Spanish, French, German, Italian, Japanese, Chinese)	
Camera Title	On / Off	
Day & Night	Auto (ICR) / Color / B/W	
Backlight Compensation	BLC / HLC / Off	
Motion Detection	On / Off	
Privacy Masking	On / Off (8 Programmable zones)	
3D Noise Filter (SSNR II)	Low / Medium / High / Off	
Sens-up (Frame Integration)	On / Off (Selectable limit ~ 512X)	
Gain Control	Low / High / Off	
White Balance	ATW / AWC / Manual / Indoor / Outdoor	
Electronic Shutter Speed	Auto (NTSC : 1/60 ~ 1/120,000sec, PAL : 1/50 ~ 1/120,000) / Manual / A.FLK	
Flip	On / Off	
Mirror	On / Off	
<b>ENVIRONMENTAL</b>		
Operating Temperature / Humidity	-10°C ~ +50°C / 20% ~ 80% RH	
Storage Temperature / Humidity	-20°C ~ +60°C / 20% ~ 90% RH	
<b>MECHANICAL</b>		
Dimension (WxHxD)	Ø107.6 x 83.7mm (Ø4.23" x 3.30")	
Weight	280g (0.61 lb)	
IR LED	8ea	
IR Distance	7m (23ft)	
Certification	FCC (Class A), cUL/UL listed	CE (Class A)

### Dimensions

Unit : mm (inch)



Design and specifications are subject to change without notice.



The Eco mark represents Samsung Techwin's will to create environment-friendly products, and indicates that the product satisfies the EU RoHS Directive.



**SAMSUNG TECHWIN CO., LTD.**  
145-3, Sangdaewon 1-dong, Jungwon-gu, Seongnam-si, Gyeonggi-do Korea 462-703  
Tel : +82-31-740-8151-8 Fax : +82-31-740-8145  
www.samsungcctv.com

**SAMSUNG TECHWIN AMERICA Inc.**  
1480 Charles Willard St, Carson, CA 90746, UNITED STATES  
Tel Free : +1-877-213-1222 Fax : +1-310-632-2195  
www.samsungcctvusa.com

**SAMSUNG TECHWIN EUROPE CO., LTD.**  
Samsung House, 1000 Hillwood Drive, Hillwood Business Park  
Chertsey, Surrey, UNITED KINGDOM KT16 OPS  
Tel : +44-1932-45-5300 Fax : +44-1932-45-5325

**TIANJIN SAMSUNG TECHWIN OPTO-ELECTRONICS CO., LTD.**  
No. 11 Wei 6 Street, Micro-Electronic Industrial Park  
Jingang Road, Tianjin, P.R. CHINA 300385  
Tel : +86-22-23887788 Fax : +86-22-23887788

DISTRIBUTED BY



I.E-0910



SAMSUNG TECHWIN



## See in the Dark

High Performance IR LED Indoor Dome Camera

## SIR-60

High Resolution Day & Night IR LED Dome Camera

- ICR Day & Night Technology
- IR Mode for Short-Distance Images with No Color Smearing
- 580TV lines High Resolution in Color, Ultra Low Light Level of 0 Lux
- Built-in IR Lens for Nighttime Auto Focusing
- Power-Saving, High Performance IR LED Lamp



REVISED 9-2009

www.samsungcctv.com

# Equipped with High Performance IR LED

Indoor Dome Camera

# SIR-60

## For Complete Darkness : Ultra Low Light Level of 0 Lux



With built-in high performance Infra Red LEDs, the SIR-60 will illuminate all objects in the immediate area of up to 7m from the camera giving clear images in what would seem to be complete darkness of 0 Lux.



Conventional Camera

SIR-60

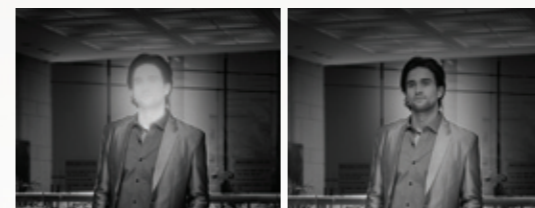
# Compact Size Perfect for Anywhere Inside Premises

With its built-in high-performance LED illuminators, the SIR-60 Infra Red LED dome camera captures images in total darkness of 0 Lux. Compared to same-class cameras, the SIR-60 delivers superior nighttime pictures with its automatic IR intensity adjustment of objects at short distances, ICR Day & Night technology and an IR corrected lens. Its 3.6mm lens is perfect to monitor compact areas such as small stores, storage areas and hallways.

## Automatic IR intensity adjustment



The SIR-60 clear and sharp monochrome images when the Infra Red LEDs are illuminated irrespective of how close the object is to the camera as the LED intensity automatically adjusts.



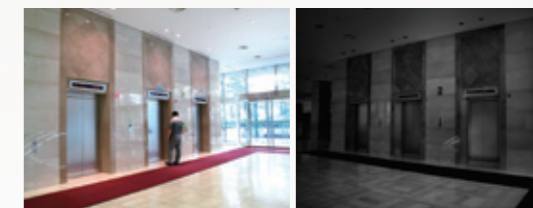
Conventional Camera

SIR-60

## ICR Day & Night and IR Lens



With the ICR Day & Night technology, the SIR-60 automatically adjusts its IR filter to achieve clear imaging 24/7. During nighttime, the IR corrected lens automatically adjusts to deliver pictures of superior quality compared to cameras in the same class.



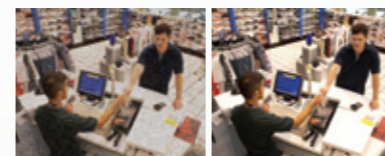
Day

Night

## Clear Horizontal Resolution of 580TV lines



The SIR-60 provides a resolution of 580TV lines or higher in color and 700TV lines in black & white by utilizing a high-performance Super HAD CCD image sensor and the high-efficiency W-IV DSP chipset.



Conventional Camera

SIR-60

## Power-Saving, High-Performance IR LED



The SIR-60's long lasting high-performance Infra Red LEDs generate less heat and consume less power than their rivals consume, in fact they are 4 times brighter than other domes consuming the same amount of power.



## SSNR II for Perfect Noise Reduction



Embedded with the SSNR II 3D noise filtering technology, the SIR-60 effectively removes noise and afterimages in night time pictures, reducing DVR storage by up to 70%.



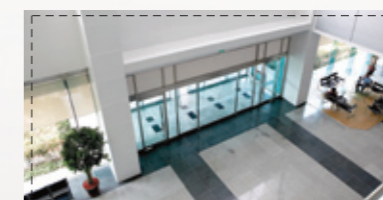
Conventional Camera

SIR-60

## 3.6mm Built-in Lens



Its built-in 3.6mm high-performance lens is capable of viewing a wide area inside the premises.



SIR-60

