



## SV-PRO

### Network Security Appliance

The SV-PRO is a true hybrid solution that offers unified video surveillance and access control in a single appliance. Powered by Genetec's unified security platform, the Security Center, the SV-PRO can just as easily be deployed as an access-control-only or video-only solution. As part of Genetec's series of SV network security appliances, this security appliance is ideal for mid-size and stand-alone hybrid applications requiring up to 12TB of storage. The SV-PRO delivers an advanced feature set, supports industry-standard cameras and door controllers and is simple to install, deploy, and maintain.

#### Benefits

**Install Video, Access Control or Both** – As a true hybrid solution, the SV-PRO unifies video and access control within a single appliance. Video-only or access-control-only options are available as well. With up to 12TB of storage, the SV-PRO can accommodate up to 100 cameras, or up to 256 readers, or in the case of a unified solution, up to 50 cameras and 128 readers.

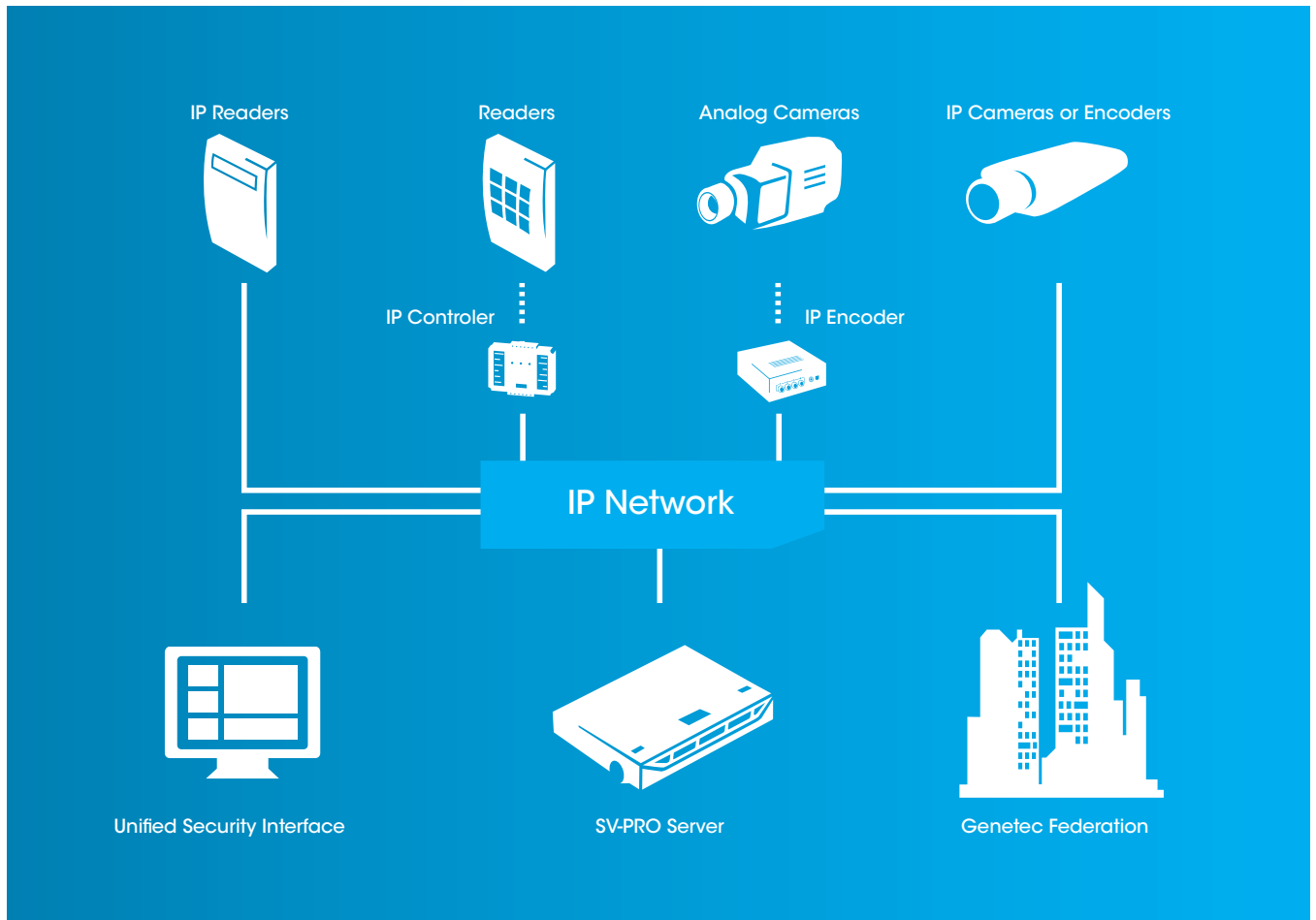
**Pick Your Package and Deploy In No Time** – With Security Center pre-loaded on the SV-PRO, you can quickly and easily deploy your unified or standalone video surveillance and access control systems. You can also choose from a selection of Genetec's software packages; smaller installations will benefit from Genetec's Standard packages with just the right feature set while customers with mid-size deployments can take advantage of the more advanced features in Genetec's Pro packages.

**Choose Best-of-Breed Hardware** – At its core, the SV-PRO is engineered as an open device. This means that you can choose your preferred hardware or re-use existing hardware to cut down initial deployment costs. You can get the latest IP cameras or keep analog cameras with IP encoders, and select best-of-breed access control hardware from an extensive list of supported devices.

**Get A Future-Proof Solution** – As like other Genetec SV appliances, camera and door licenses are obtained one at time with the SV-PRO. Therefore, adding devices to your system is simple. New releases and latest features of Security Center including both Omnicast and Synergis are also easily obtained with software upgrades. And if the system grows beyond the maximum camera and door count, you simply transition your systems to larger storage devices by trading-up your licenses.

**Deploy A Powerful and Reliable Appliance** – The SV-PRO network security appliance features hot swappable hard drives, a redundant power supply option and dual-port network card, offering you more power and reliability than other devices on the market. The appliance also comes with a 3-year hardware warranty ensuring additional protection on your investment. The dedicated server can also be mounted on racks with other corporate servers for ease of maintenance.





## Architecture Overview

The SV-PRO accommodates different deployment scenarios. This network security appliance can be installed as a stand-alone security solution in a single location, managing cameras and door readers from a wide variety of brands. With Genetec's Federation feature, the SV-PRO can also be deployed in a remote site, acting as an extension to a larger federated system. This scenario provides local autonomy of the system at the remote site while facilitating central monitoring capabilities at operational headquarters.

## Key Features

Hybrid device for video and access control applications

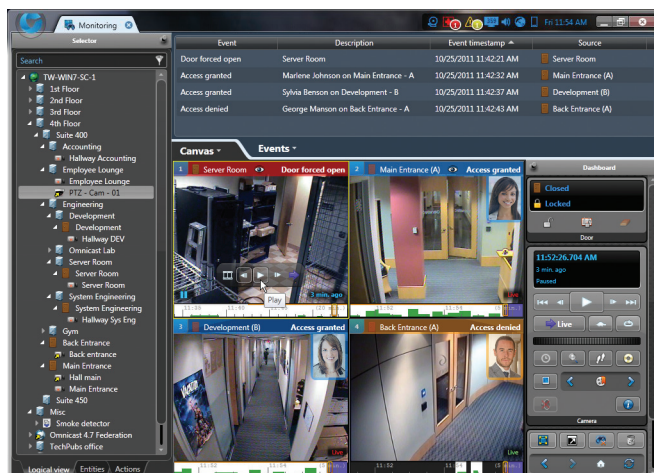
Powered by Genetec's Security Center

Straightforward deployment

Rack-mountable appliance

Easy upgrades and updates

Options for 4TB, 8TB or 12TB of internal hot-swappable storage



## Security Center Base Specifications

Overview	<ul style="list-style-type: none"> <li>Fully configurable and task-oriented user interface</li> <li>Full-screen mode option</li> <li>Multi-monitor support</li> <li>Up to 10 user connections</li> <li>User configurable event list and display tile views</li> <li>Advanced search tool for tasks, cameras, doors and other entities</li> <li>Event to action mechanism</li> <li>Macros</li> <li>Web Clients (may require an additional server)</li> <li>Advanced Mapping with Plan Manager (may require an additional server)</li> </ul>
Alarm Management	<ul style="list-style-type: none"> <li>Full range of alarm management controls</li> <li>Pre/post- alarm recording</li> <li>Live and playback alarms</li> <li>Alarm recipient and escalation mechanism</li> <li>Support for hundreds of alarm priority levels</li> <li>Acknowledgement, snooze, forward</li> <li>User defined procedure</li> <li>Mandatory incident entry upon alarm acknowledgement</li> </ul>
Reporting	<ul style="list-style-type: none"> <li>Configuration, activity, audit trail, incident, alarm, event, bookmark, video and access control reports</li> <li>Comprehensive event filtering</li> <li>Print and email actions</li> <li>PDF, Microsoft Excel, and CSV export options</li> <li>Automatically email schedules of pre-configured report templates</li> </ul>
System Configuration	<ul style="list-style-type: none"> <li>Copy Configuration</li> <li>Auto-discovery of video and access control units</li> <li>Unit swap utility for camera or door controller replacement</li> <li>Maintenance mode</li> <li>Import tool to import large amounts of cardholder and card data</li> <li>Silent installation for mass deployment and upgrades</li> </ul>
Security	<ul style="list-style-type: none"> <li>Encrypted communications between client and server applications</li> <li>Configurable user and user group permissions and privileges</li> <li>Authenticated user logins</li> <li>Supervised login procedures</li> <li>Support for Windows Active Directory</li> <li>User activity logs and audit trails</li> <li>Digitally signed video recording (watermarking)</li> <li>Password-protected export</li> <li>HTTPS support</li> </ul>
Database	<ul style="list-style-type: none"> <li>SQL Express</li> </ul>

## Omnicast Specifications

Overview	<ul style="list-style-type: none"> <li>Side-by-side live and playback video</li> <li>Up to 64 live or playback cameras per monitor</li> <li>Instant replay of any camera on display</li> <li>Support for multicast and multistreaming</li> <li>Dynamic stream switching</li> <li>PTZ control including PTZ-in-tile controls</li> <li>Digital zoom for clear identification</li> <li>Bidirectional audio</li> <li>Motion detection</li> <li>Camera sequences</li> <li>Guard tour</li> <li>Bookmark capabilities for archive search and retrieval</li> <li>Save, print and email snapshots</li> <li>Video image cropping</li> <li>Video setting options including compression format, frame rate, resolution, quality, bitrate, key frame interval</li> </ul>
Recording	<ul style="list-style-type: none"> <li>Up to 100 cameras or 200 Mbps</li> <li>H.264 / MPEG-4 / MJPEG / MPEG-2 / Wavelet</li> <li>Recording mode: continuous, on motion, on events, on alarms, manual</li> <li>Pre/post recording up to 300 seconds</li> <li>Video downsampling</li> <li>Export video sequence in proprietary (G64) or public (ASF) formats</li> </ul>

## Synergis Specifications

Overview	<ul style="list-style-type: none"> <li>Up to 256 readers</li> <li>View access control events and associated video within each tile</li> <li>Verification of cardholder picture IDs against live or recorded video</li> <li>Unified task for configuring and managing credentials, cardholders, and access rights</li> <li>Custom door unlocking schedules</li> <li>Zone monitoring (input points)</li> <li>Support for hundreds of custom fields</li> <li>Area antipassback</li> <li>Elevator Control and Floor Tracking</li> <li>Area Interlock and Lockdown</li> <li>Time and Attendance Reports</li> <li>Visitor Management</li> <li>Badge Design</li> <li>Custom Card Formats</li> <li>Multiple Card Formats per Door Controller</li> <li>Multiple Credentials per Cardholder</li> <li>Card and Keypad (PIN)</li> </ul>
----------	---

# SV-PRO

## Network Security Appliance

### Technical Specifications

OS	• Windows Standard Embedded 7
CPU	• Intel Xeon L3406 2.26 GHz
Memory	• 4GB
Ethernet	• On-Board Dual Gigabit Network Adapter
Storage	• 4TB option (7.2K RPM SATA Hard Drives) • 8TB option (7.2K RPM SATA Hard Drives) • 12TB option (7.2K RPM SAS Hard Drives)

### Mechanical and Environmental Specifications

Form Factor	• 1U Rack
Power	• Non-redundant 350W power supply (4TB option) • Redundant 400W power supply (8TB and 12TB options)
Dimensions (WxDxH)	• 1.67" H x 17.10" W x 24.00" D (42.4 x 434.0 x 610.0 mm)
Rack Support	• 2/4 -Static Post Rails

### Warranty

Hardware	• 3-year ProSupport and Next Business Day On-site Service from DELL
Software	• 1-year standard warranty

### Ordering information\*

Part number	Product Description
SVPRO-4TB	• SV-PRO with 4TB including Genetec software (license sold separately)
SVPRO-8TB	• SV-PRO with 8TB including Genetec software (license sold separately)
SVPRO-12TB	• SV-PRO with 12TB including Genetec software (license sold separately)

\* The SV-PRO can be ordered with Omnicast or Security Center Standard or Professional licenses.

\* Only available in North America.



### About Genetec

Genetec is a pioneer in the physical security and public safety industry and a global provider of world-class IP license plate recognition (LPR), video surveillance and access control solutions to markets such as transportation, education, retail, gaming, government and more. With sales offices and partnerships around the world, Genetec has established itself as the leader in innovative networked solutions by employing a high level of flexibility and forward-thinking principles into the development of its core technology and business solutions. Genetec's corporate culture is an extension of these very same principles, encouraging a dynamic and innovative workforce that is dedicated to the development of cutting-edge solutions and to exceptional customer care. For more information, visit [genetec.com](http://genetec.com).

2280 Alfred-Nobel Blvd., Suite 400, Montreal, QC, Canada H4S 2A4 | T 514.332.4000, F 514.332.1692 | [genetec.com](http://genetec.com) | [info@genetec.com](mailto:info@genetec.com)