

2/W COLOUR DUOX VIDEO VEO KIT



Reference: 9422

Now with Photocaller, the new DUOX function. It captures up to 150 images of visitors, indicating the date and time.

FERMAX is presenting its **new VEO Kits** for single family homes, offices and busi...

DESCRIPTION

Now with Photocaller, the new DUOX function. It captures up to 150 images of visitors, indicating the date and time.

FERMAX is presenting its **new VEO Kits** for single family homes, offices and businesses.

These Kits include the new **VEO monitor**.

The VEO kits include all the necessary materials for a complete installation: Cityline panel, a safe choice, resulting from combining a classic aesthetic, robustness and reliability; the VEO monitor and power supply.

TECHNICAL SPECIFICATIONS

Includes:

- 70008 City Panel DUOX Colour. S1 130x128
- 8948 Flush box. S1: 115x114x45
- 9405 Colour DUOX VEO Monitor (2uds)
- 9406 DUOX VEO Monitor Connector (2uds)
- 4810 Power Supply DIN10 230Vac/12Vac 18Vdc/1.5A
- 3244 DUOX Filter
- 3255 DUOX LINE ADAPTOR

Video

- Resolution: QVGA(320x240 pixels).
- Sensor: 1/3" color CMOS.
- Effective pixels: 1M.
- Minimum external illumination: 0,5 lux.
- SNR >40dB.
- Frame rate 25 fps.
- Auto iris.
- Auto BLC.
- View angle 90° H, 72°V.
- Color night vision through white led.

Weight: 3,7402546 kg

Size of product when packed: 23x23,7x18,2 cm

FERMAX

EAN 13: 8,4243E+12

Included products

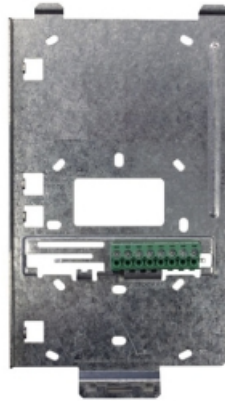


**COLOUR DUOX VEO
MONITOR 4,3"**

Ref: 9405

The VEO monitor is made of high-impact ABS plastic. Texturised finish for easy cleaning and ultraviolet protection to get more resistance to the light...

[+ INFO](#)



**DUOX VEO MONITOR
CONNECTOR**

Ref: 9406

Installation connector. For VEO monitors. For DUOX system. One per monitor is required.

[+ INFO](#)

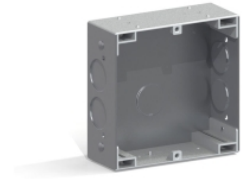


**CITY PANEL DUOX S1 CP
201 COLOUR**

Ref: 70008

New Cityline Panel: CityLine is the "continuous profile" outdoor panel line for buildings. This new panel model is more robust, more luxurious and...

[+ INFO](#)



**CITY FLUSH BOX FOR KIT
(S1)**

Ref: 8948

In order to install a panel it is necessary to place a box in the wall where we will subsequently fix the panel. The flushboxes are manufactured in...

[+ INFO](#)



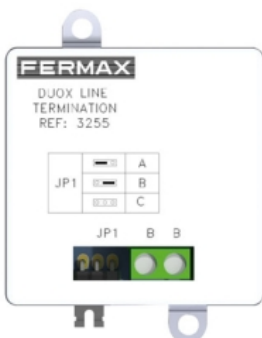
**P.S.U. DIN10
230VAC/12VAC+18VDC-
1.5A**

Ref: 4810

Used to power the different equipment in a Fermax installation.

Constructed in self-extinguishing VO material. Includes a set of covers to protect the...

[+ INFO](#)



DUOX LINE ADAPTOR

Ref: 3255

For DUOX systems it will be



DUOX FILTER

Ref: 3244

DIN-4 rail format for easy installation inside an electrical equipment box, or can be screwed directly onto the wall.

[+ INFO](#)

necessary to install a line adapter device. Its function is to adapt the transmission line and it includes a jumper to...

+ INFO

+ INFO
