

1/W DUOX MEMOPHONE CITY KIT LOFT

**Reference:** 4913

Electronic door entry equipment with built-in Memokey keypad.

- Allows audio-video communication between outdoor panel and home telephone.
- Remote door opening from the telephone.
- Door opening...

DESCRIPTION

Electronic door entry equipment with built-in Memokey keypad.

- Allows audio-video communication between outdoor panel and home telephone.
- Remote door opening from the telephone.
- Door opening from the keypad by entering a PIN code.

TECHNICAL SPECIFICATIONS

Includes:

- 4904. Memophone City Panel DUOX. S5: 130x246.
- 8855. Series 5 flush box. S5. 115x233x45.
- 3422. LOFT DUOX EXTRA HANDSET
- 4810. Power supply 230VAC/12Vac+18Vdc 1,5A DIN10
- 3244. DUOX Filter

Weight: 2,7106214 kg

Size of product when packed: 41x26,7x7,5 cm

EAN 13: 8424299049137

Included products

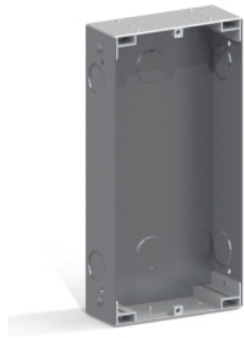


DUOX EXTRA LOFT TELEPHONE

Ref: 3422

Audio terminal. Installed in homes, enables communication with outdoor panel and door opening.

[+ INFO](#)



CITY FLUSH BOX S5

Ref: 8855

In order to install a panel it is necessary to place a box in the wall where we will subsequently fix the panel.

The flushboxes are manufactured in...

[+ INFO](#)



P.S.U. DIN10 230VAC/12VAC+18VDC- 1.5A

Ref: 4810

Used to power the different equipment in a Ferman installation.

Constructed in self-extinguishing VO material. Includes a set of covers to protect the...

[+ INFO](#)



DUOX FILTER

Ref: 3244

DIN-4 rail format for easy installation inside an electrical equipment box, or can be screwed directly onto the wall.

[+ INFO](#)