

## 1/W COLOUR DUOX VIDEO VEO-XS KIT



**Reference:** 9431

**Now with Photocaller, the new DUOX function. It captures up to 150 images of visitors, indicating the date and time.**

FERMAX is presenting its **new VEO-XS Kits** for single family homes, offices and b...

### DESCRIPTION

**Now with Photocaller, the new DUOX function. It captures up to 150 images of visitors, indicating the date and time.**

FERMAX is presenting its **new VEO-XS Kits** for single family homes, offices and businesses.

These Kits include the new **VEO-XS monitor**.

The VEO-XS kits include all the necessary materials for a complete installation: Cityline panel, a safe choice, resulting from combining a classic aesthetic, robustness and reliability; the VEO-XS monitor and power supply.

### TECHNICAL SPECIFICATIONS

Includes:

- 70708 City Panel DUOX Colour S1 CP 101. S1 130x128
- 8948 Flush box. S1: 115x114x45
- 9408 VEO-XS DUOX Colour Monitor
- 9407 VEO-XS DUOX monitor connector
- 4810 Power Supply DIN10 230Vac/12Vac 18Vdc/1.5A
- 3244 DUOX filter.

Video

- Resolution: QVGA(320x240 pixels).
- Sensor: 1/3" color CMOS.
- Effective pixels: 1M.
- Minimum external illumination: 0,5 lux.
- SNR >40dB.
- Frame rate 25 fps.
- Auto iris.
- Auto BLC.
- View angle 90° H, 72°V.
- Color night vision through white led.

**Weight:** 2,2104546 kg

**Size of product when packed:** 22x20x14 cm



EAN 13: 8424299094311

## Included products



### COLOUR DUOX VEO-XS MONITOR 4,3"

Ref: 9408

Hands-free VEO-XS monitor. Characterised by its small size and extra-flat thickness. Thanks to its OSD menu and the layout of the buttons, interaction...

[+ INFO](#)



### CITY PANEL DUOX COLOUR S1 CP 101

Ref: 70708

New Cityline Panel: CityLine is the "continuous profile" outdoor panel line for buildings. This new panel model is more robust, more luxurious and...

[+ INFO](#)

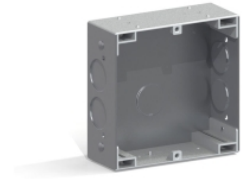


### DUOX VEO-XS MONITOR CONNECTOR

Ref: 9407

Installation's connector. For VEO-XS monitors. For DUOX technology.

[+ INFO](#)



### CITY FLUSH BOX FOR KIT (S1)

Ref: 8948

In order to install a panel it is necessary to place a box in the wall where we will subsequently fix the panel. The flushboxes are manufactured in...

[+ INFO](#)



### P.S.U. DIN10 230VAC/12VAC+18VDC-1.5A

Ref: 4810

Used to power the different equipment in a Fermax installation.

Constructed in self-extinguishing VO material. Includes a set of covers to protect the...

[+ INFO](#)



### DUOX FILTER

Ref: 3244

DIN-4 rail format for easy installation inside an electrical equipment box, or can be screwed directly onto the wall.

[+ INFO](#)

**FERMAX**

FINO

