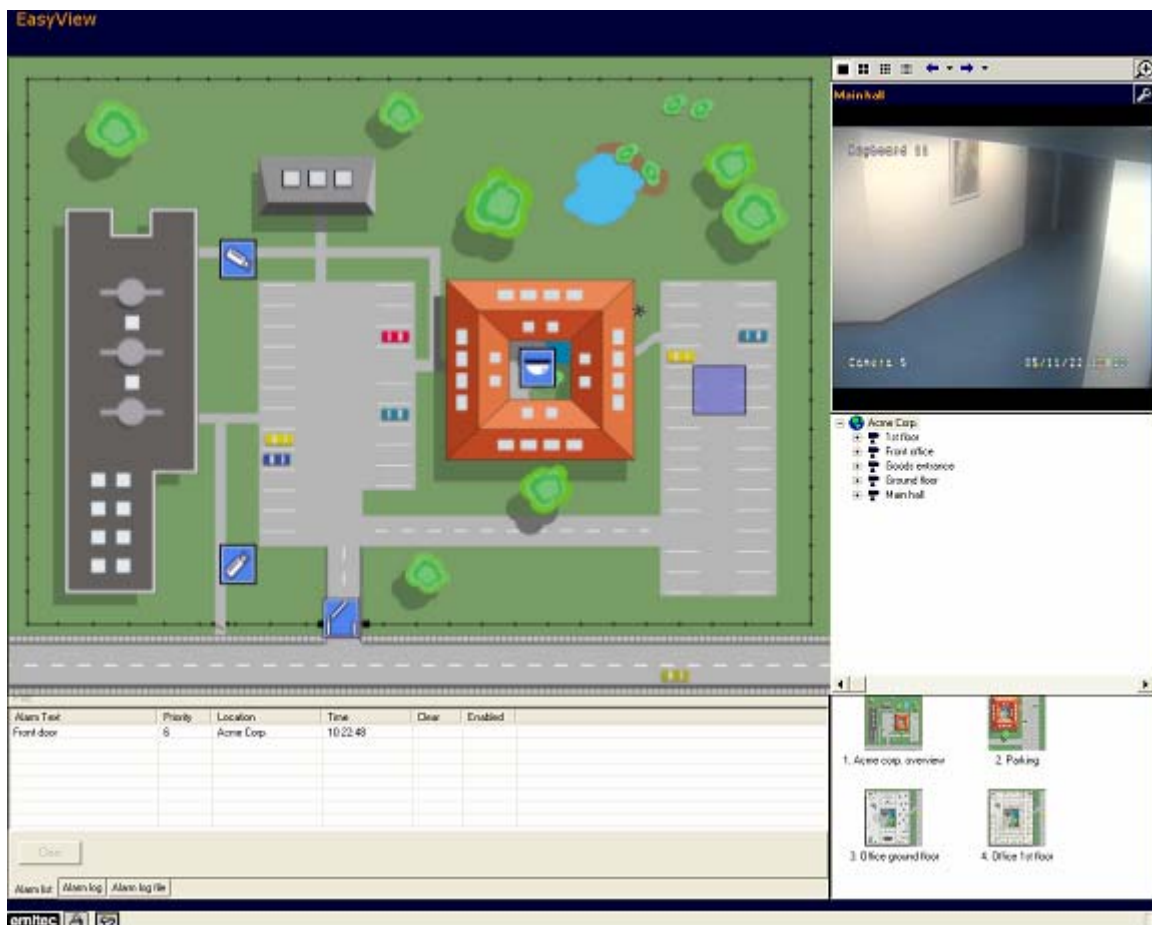


EasyView™ Video Integration Platform

ernitec

Description

EasyView™ is an advanced Graphical User Interface that provides not only control over a selected range of the Ernitec IP based products such as the EDNS DVR series and the VB8000 IP Video Transmission system, but also integration between these products.



Key features

- Integration with Ernitec 2000, 4000, 6000 and 7000 EDNS series DVR's
- Integration with Ernitec VB8000 IP Transmission and NVR
- Integration with Ernitec System-X via RS-232 and/or VSX-704 IP Interface
- Advanced Alarm handling
- Import of maps (as seen above). All standard graphic formats are supported
- Drag-and-drop camera selection
- Link hierarchical sets of maps
- Easy to configure and operate
- PTZ Control
- Sequences and macros
- Selectable screen layout
- Operator log

Integration possibilities

The EasyView™ software can be used with most of the Ernitec IP-based products. This makes it the ideal platform for remote monitoring of multiple sites with different products.

Video viewing

The video signals from the attached devices are viewed in a video window. The video window can be set to show either a single camera or a 4, 9 or 16-split.

Alarm handling

The alarm handling is designed to provide the operator with a fast and easy-to-understand overview of the alarm status.

All incoming alarms can be prioritised so that the most important alarms automatically override the less important alarms. At the same time, the alarm list constantly shows the operator which alarms still needs to be responded to and he can thereby easily switch between the various alarms in order to provide the fastest alarm response.

The alarm handling includes selection of up to 9 cameras which can come from any source, i.e. they need not come from the same equipment that raised the alarm. PTZ presets as well as output relays can also be activated automatically upon an alarm.

The alarm clearing can be set to follow the alarm input or be forced to be cleared by the operator. All alarms are logged in a file with information such as time/date, alarm source, when and how the alarm was cleared etc.

Time zones (days, hours) can be defined in which certain alarms can be disabled.

Alarms can be assigned to a to-do-list. When an assigned alarm is activated, a pop-up-window will be displayed on the screen and the operator is asked to do something, e.g. call a certain number, before manually disabling the alarm and continue other alarm handling operations.

Macros

EasyView™ offers programmable macros which can automate the operation of a system. The macros can be programmed with functions such as camera selection, call of presets and activation of contact outputs.

Operator Log

This log can keep track of the operations of each operator logged into the system. This feature is very suitable for alarm handling centres where e.g. a customer can be charged according to the actual workload.

Languages

EasyView™ is available in English, German, French and Danish.

Configuration

EasyView™ is designed to be easy to configure. Most of the configuration can be done by wizards which guides the installer through the configuration. In connection with the System-X video matrixes, it is also possible to import the whole matrix configuration from the System-X configuration software, such as camera texts, I/O connections, etc. This means that once the matrix has been installed all the relevant information can be imported directly into EasyView™ thereby reducing the time spent on configuring it.

The PC

EasyView™ comes pre-installed on a PC. The PC is by default provided with a 19" TFT monitor. The graphics card can either operate in "single screen" or "dual screen", i.e. by adding a second monitor it is possible to e.g. view the maps, alarms lists etc. on one monitor and have all the video signals displayed on the second monitor. The PC can display up to 16 video streams simultaneously. Please refer to the specifications table on next page.

Supported Products

EasyView™ is available in four different versions depending on the number of cameras supported. Please contact Ernitec if you require support for more than 1000 cameras.

EasyView support the following products:	EasyView™			
	No. of Cameras			
	Max. 16	Max. 64	Max. 256	Max. 999
System-X via I151SX-PCIF	√	√	√	√
System-X via VSX-704	√	√	√	√
EDNS 2000 Series DVR	√	√	√	√
EDNS 4000 Series DVR	√	√	√	√
EDNS 6000 Series DVR	√	√	√	√
EDNS 7000 Series DVR	√	√	√	√
VB 8000 IP Solution	√	√	√	√

Specifications

Software specifications	
Maximum number of maps	1000
Map formats	BMP, GIF, JPG (all standard graphic formats)
Maximum number of cameras	1000
Maximum number of alarms	1000
Maximum number of control outputs	1000
Hardware specifications	
Monitor	
Size / type	19" TFT
Resolution	1280 x 1024
Response time	20 ms
Contrast ratio	800:1
Horizontal viewing angle	±85°
Dimensions (H x W x D)	
- Non-extended	420 x 415 x 217 mm
- Extended	530 x 415 x 217 mm
Power consumption	75 W (max)
Net weight	7 kg
Computer/Network Requirements	
Processor	Intel Pentium 4, 3.0 GHz
Operating System	Windows 2000/XP*) (only tested with English versions)
Graphics Card	Matrox P650, 128 MB PCIe or 100% compatible
RAM	1024 MB RAM
Free Hard Disk space required	200MB free space
CD or DVD Drive	CD-ROM Drive
USB Ports	One free USB Port
Pointing Device	Windows compatible Pointing Device
Network connection	100 MBit Ethernet IP Network
*)Always install latest upgrades/service packs from www.windowsupdate.com	



THE ONE TO WATCH

Denmark Head Office

Ernitec A/S
Hørkær 24
2730 Herlev
Denmark
Phone: +45 44 50 33 00
Fax: +45 44 50 33 33
info@ernitec.dk
www.ernitec.com

French Branch Office

Ernitec France
N° 29 Parc Club du
Millenaire
1025 Rue Henri Becquerel
34036 Montpellier cedex 1
France
Phone: 04 67 15 10 15
Fax: 04 67 64 01 81
info@ernitec.fr
www.ernitec.com

German Branch Office

Ernitec GmbH
Stormarnring 28
22145 Stapelfeld
Germany
Phone: 040 67 56 25 0
Fax: 040 67 56 25 25
info@ernitec.de
www.ernitec.com

UK Branch Office

Ernitec UK
Columbia House
Columbia Drive
Worthing
West Sussex BN13 3HD
England
Phone: 01903 26 31 25
Fax: 01903 26 31 26
info@ernitec.uk
www.ernitec.com

Middle East Office

Ernitec ME
Hamra - Makdesi Street
Younis Center - 5th floor
Office no. 503
P.O.Box: 113/5721
Beirut
Lebanon
Phone: +961 1 751 796
Fax: +961 1 751 795
info@ernitecme.com
www.ernitecme.com

Order Codes

Model Name	Order No.	Description
EASYVIEW w/PC UK-16	0087-01001	EasyView SW with PC for a maximum of 16 cameras
EASYVIEW w/PC DK-16	0087-01002	EasyView SW with PC for a maximum of 16 cameras
EASYVIEW w/PC DE-16	0087-01003	EasyView SW with PC for a maximum of 16 cameras
EASYVIEW w/PC FR-16	0087-01004	EasyView SW with PC for a maximum of 16 cameras
EASYVIEW w/PC UK-64	0087-02001	EasyView SW with PC for a maximum of 64 cameras
EASYVIEW w/PC DK-64	0087-02002	EasyView SW with PC for a maximum of 64 cameras
EASYVIEW w/PC DE-64	0087-02003	EasyView SW with PC for a maximum of 64 cameras
EASYVIEW w/PC FR-64	0087-02004	EasyView SW with PC for a maximum of 64 cameras
EASYVIEW w/PC UK-256	0087-03001	EasyView SW with PC for a maximum of 256 cameras
EASYVIEW w/PC DK-256	0087-03002	EasyView SW with PC for a maximum of 256 cameras
EASYVIEW w/PC DE-256	0087-03003	EasyView SW with PC for a maximum of 256 cameras
EASYVIEW w/PC FR-256	0087-03004	EasyView SW with PC for a maximum of 256 cameras
EASYVIEW w/PC UK-999	0087-04001	EasyView SW with PC for a maximum of 999 cameras
EASYVIEW w/PC DK-999	0087-04002	EasyView SW with PC for a maximum of 999 cameras
EASYVIEW w/PC DE-999	0087-04003	EasyView SW with PC for a maximum of 999 cameras
EASYVIEW w/PC FR-999	0087-04004	EasyView SW with PC for a maximum of 999 cameras
EASYVIEW x16 SW on CD	0058-00120	EasyView SW with PC for a maximum of 16 cameras
EASYVIEW x64 SW on CD	0058-00121	EasyView SW with PC for a maximum of 64 cameras
EASYVIEW x256 SW on CD	0058-00122	EasyView SW with PC for a maximum of 256 cameras
EASYVIEW x999 SW on CD	0058-00123	EasyView SW with PC for a maximum of 999 cameras

All packages with PC are available with English, German, French and Danish PC.