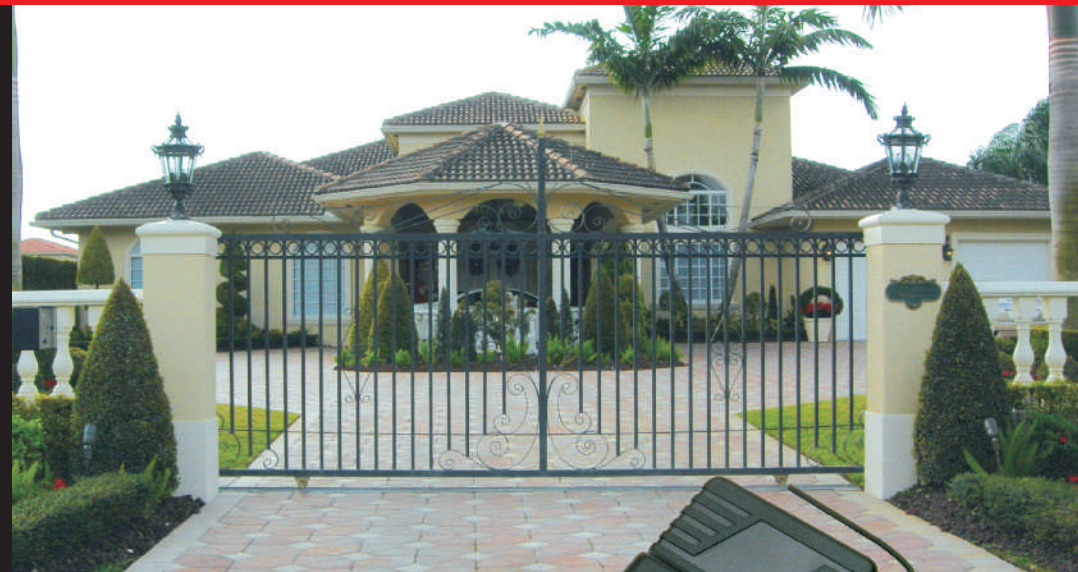


Make it wireless



A complete range of wireless products from SECO-LARM



1, 2 and 4 channel receivers for use in a wide range of applications.

SK-910RBQ

Key Features

- 1, 2 or 4 channels.
- Range up to 500ft (150m)¹.
- Frequency 315MHz (433.92MHz versions available).
- Programmable output modes:
 - Timed Momentary
 - Toggle (On/Off)
 - Latch (Output stays on until manually reset)².
 - Validity (Output for as long as signal is received)
- Compatible with all SECO-LARM Fixed-Code and CODEBUMP™ transmitters.
- Flexible operating voltage: 11-24 VAC/VDC³

Applications

Perfect for controlling garage and gate openers, home alarms, home automation, and much more.

¹Actual antenna range will vary greatly depending on the installation and operating environment.

²SK-910RBQ, SK-910RB2Q and SK-910R4Q only.

³Except SK-910RAV and SK-910RAV2: 3~13.8 VDC



SK-910RB2Q



SK-910R4Q



SK-910RAV2



SK-910RA
SK-910RAV



A unique combination of functions make our Central Receiver highly flexible and ideal for use in a variety of applications.

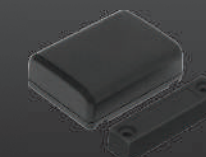


SK-910RC4Q

Key Features

- 4 channels, each with adjustable alert tone.
- Range up to 500ft (150m)¹.
- Frequency 315MHz (433.92MHz versions available).
- Four relays, one per channel, 10A@12VDC.
- Programmable output modes:
 - Timed Momentary
 - Toggle (On/Off)
 - Latch (Output stays on until manually reset).
 - Validity (Output for as long as signal is received)
- Compatible with all SECO-LARM Fixed-Code and CODEBUMP™ transmitters.
- Flexible operating voltage: 11-24 VAC/VDC.
- FCC Certified.

Accessories



SM-93T19Q



SK-919TPWFEUQ



SK-9908-1T19Q

Applications

Perfect for controlling garage and gate openers, home alarms, home automation, and much more.

¹Actual antenna range will vary greatly depending on the installation and operating environment.

Selection Chart

Transmitters

| Model No | Number of Buttons | Coded Channels | Operating Distance ¹ | Battery | RF Code |
|--------------|-------------------|----------------|---------------------------------|------------------------------|--------------------------|
| SK-919TD1S-P | 1 | 1 | 500 feet (150m) | 12VDC Alkaline | Fixed, Pre-Coded |
| SK-919TT1S-B | 1 | 1 | 500 feet (150m) | 12VDC Alkaline | Fixed, Dip Switch Coding |
| SK-919TDWS-B | 1 | 1 | 500 feet (150m) | 12VDC Alkaline | Fixed, Pre-Coded |
| SK-919TP1H-B | 1 | 1 | 500 feet (150m) | 3VDC lithium x2 CR 2016 | Fixed |
| SK-919TB1H-B | 1 | 1 | 500 feet (150m) | 3VDC lithium x2 CR 2016 | Fixed, Dip Switch Coding |
| SK-917T2A | 2 | 3 | 500 feet (150m) | 12VDC Alkaline | CODEBUMP |
| SK-919TD2A | 2 | 3 | 500 feet (150m) | 12VDC Alkaline | Fixed |
| SK-919TD2A-P | 2 | 3 | 500 feet (150m) | 12VDC Alkaline | Fixed, Pre-Coded |
| SK-919TP2H | 2 | 3 | 500 feet (150m) | 3VDC lithium x2 CR 2016 | Fixed |
| SK-919TB2H-N | 2 | 3 | 500 feet (150m) | 3VDC lithium x2 CR 2016 | Fixed, Dip Switch Coding |
| SK-919TP2D-P | 2 | 3 | 500 feet (150m) | 12VDC with 9V backup battery | Fixed, Pre-Coded |
| SK-919TP2D-F | 2 | 3 | 500 feet (150m) | 12VDC with 9V backup battery | Fixed, Pre-Coded |
| SK-917TP4J | 4 | 15 | 500 feet (150m) | 12VDC Alkaline | CODEBUMP |
| SK-919TP4J | 4 | 15 | 500 feet (150m) | 12VDC Alkaline | Fixed |
| SK-919TP4H | 4 | 15 | 500 feet (150m) | 3VDC lithium x2 CR 2016 | Fixed |
| SK-919TB4H-N | 4 | 15 | 500 feet (150m) | 3VDC lithium x2 CR 2016 | Fixed, Dip Switch Coding |
| SK-919TP4D-P | 4 | 15 | 500 feet (150m) | 3VDC lithium x2 CR 2016 | Fixed, Dip Switch Coding |

¹Actual antenna range will vary greatly depending on the installation and operating environment.

Receivers

| Model No | Output Channels | Frequency (MHz) | Operating Distance ¹ | Battery | Output Modes |
|------------|-----------------|-----------------|---------------------------------|---------------|---|
| SK-910RQ | 1 | 315 | 500 feet (150m) | 11~24 VAC/VDC | Programmable 4s momentary (default), 1s momentary, toggle, validity |
| SK-910RA | 1 | 315 | 500 feet (150m) | 11~24 VAC/VDC | 1 relay (NO/NC/COM) |
| SK-910RAV | 1 | 315 | 500 feet (150m) | 3~13.8 VDC | 5A Transistor Ground |
| SK-910RBQ | 1 | 315 | 500 feet (150m) | 11~24 VAC/VDC | Programmable 4s momentary (default), 1s momentary, toggle, latch, validity |
| SK-910R2Q | 2 | 315 | 500 feet (150m) | 11~24 VAC/VDC | Programmable 4s momentary (default), 1s momentary, toggle, validity |
| SK-910RB2Q | 2 | 315 | 500 feet (150m) | 11~24 VAC/VDC | Programmable 4s momentary (default), 1s momentary, toggle, latch, validity |
| SK-910RAV2 | 2 | 315 | 500 feet (150m) | 3~13.8 VDC | 3A Transistor Ground |
| SK-910R4Q | 4 | 315 | 500 feet (150m) | 11~24 VAC/VDC | Programmable independent outputs: timed momentary (1, 2, 3, 4, 5, 10, 30, 60 sec), toggle (ON/OFF), latched, validity |

¹Actual antenna range will vary greatly depending on the installation and operating environment.

Compatible Table

| Receiver Model No | Commonly Used Transmitters* |
|-------------------|---|
| SK-910RQ | SK-919TD1S-P, SK-919TT1S-B, SK-919TDWS-B, SK-919TP1H-B, SK-919TB1H-B |
| SK-910RA | SK-919TD1S-P, SK-919TT1S-B, SK-919TDWS-B, SK-919TP1H-B, SK-919TB1H-B |
| SK-910RAV | SK-919TD1S-P, SK-919TT1S-B, SK-919TDWS-B, SK-919TP1H-B, SK-919TB1H-B |
| SK-910RBQ | SK-919TD1S-P, SK-919TT1S-B, SK-919TDWS-B, SK-919TP1H-B, SK-919TB1H-B |
| SK-910R2Q | SK-917T2A, SK-919TD2A, SK-919TD2A-P, SK-919TP2H, SK-919TB2H-N, SK-919TP2D-P, SK-919TP2D-F |
| SK-910RB2Q | SK-917T2A, SK-919TD2A, SK-919TD2A-P, SK-919TP2H, SK-919TB2H-N, SK-919TP2D-P, SK-919TP2D-F |
| SK-910RAV2 | SK-917T2A, SK-919TD2A, SK-919TD2A-P, SK-919TP2H, SK-919TB2H-N, SK-919TP2D-P, SK-919TP2D-F |
| SK-910R4Q | SK-917TP4J-N, SK-917TP4J-N, SK-919TP4H, SK-919TP4H-N, SK-919TP4D-P |

*Note: The above chart matches the transmitter channel capacity to the receiver; however, all transmitters can be used with all the receivers.

Superior Electronics Corp.

Tel: 886-2-2378-6161 Fax: 886-2-2378-6163

e-mail: info@superior-elec.com Homepage: www.enforcer.com.tw



1, 2 and 4 channel transmitters for use in a wide range of applications.



Key Features

- 1, 2 or 4 channels.
- Range up to 500ft (150m)¹
- Frequency 315MHz (433.92MHz versions available).
- Compatible with all SECO-LARM receivers.
- Includes 12VDC alkaline battery.

Applications

Arm and disarm car and home security systems, remotely control lights and appliances, open gates and doors, and much more.

Wired Transmitter

Connect to the N.O. output of any device to add wireless capability.

Key Features

- Power by internal battery or external 12VDC Power source.
- LED transmission indicator
- Wiring:
 - Two 6" (15cm) wires for N.O. switch input
 - Two 6" (15cm) wires for 12VDC power input



SK-919TP4J



SK-919TD2A



SK-919TD1S



SK-919TDWS-B

Handheld

Durable, weatherproof and versatile 1, 2 and 4 channel transmitters for controlling a wide range of devices. Features easy to press rubber buttons and RF Anti-scan protection.

Key Features

- 1, 2 or 4 channels.
- Range up to 500ft (150m)¹.
- Frequency 315MHz (433.92MHz versions available).
- Compatible with all SECO-LARM receivers.

Desktop and Footswitch

Remotely unlock electromagnetic locks or perform other remote operations from a desktop or floor location. Use in offices, factories, institutions or residences.

Key Features

- 2 or 4 channels.
- Range up to 500ft (150m)¹.
- Frequency 315MHz (433.92MHz versions available).
- LED indicators for transmission, low battery, and battery charging.
- Includes rechargeable 9-volt battery and 500mA power adapter.
- Compatible with all SECO-LARM receivers.



SK-919TP2H-N



SK-919TP1H-B



SK-919TP2D-F