



Mounts for Pan & Tilt Units

FDP-No.: 73108

MK-2

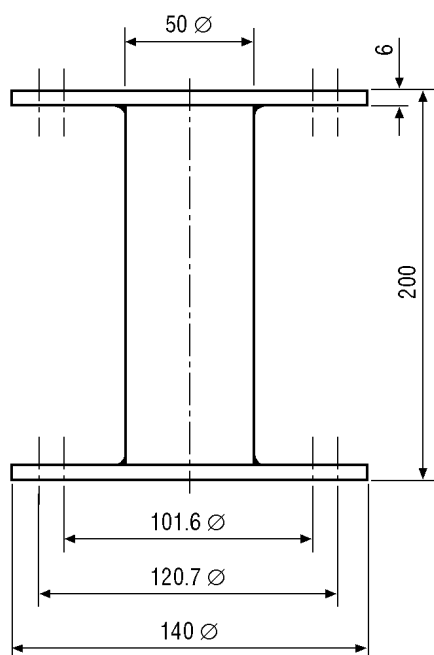
- For Pole Mounting
- For Pan- and Pan/Tilt Heads
- Rugged Construction
- Ready for Installation
- Option: Swivel Head GK-2N



Specifications:

Load capacity	20 kg
Height	200 mm
Material	Steel
Colour	RAL 7032
Dimensions (HxWxD)	See drawing
Weight	2.3 kg

Accessories	
EDP No. / Type	Description
73014 GK-2/I-N	Swivel head, light grey finish (RAL 7032)



Maße/Dimensions: mm

e-mail: info@eneo-security.com • www.eneo-security.com