



Temperature Monitoring Thermal Imaging System

Widely applied in large public areas such as airport; wharf; train & bus station and building.

Special offer

thermal imaging camera
for body temperature check

Thermal sensitivity
0.1°C



TE-W

Large Scale Population Scanning quickly

Thermal response time 0.04 seconds
Scanning large scale population in distance to detect the abnormal body temperature personnel.

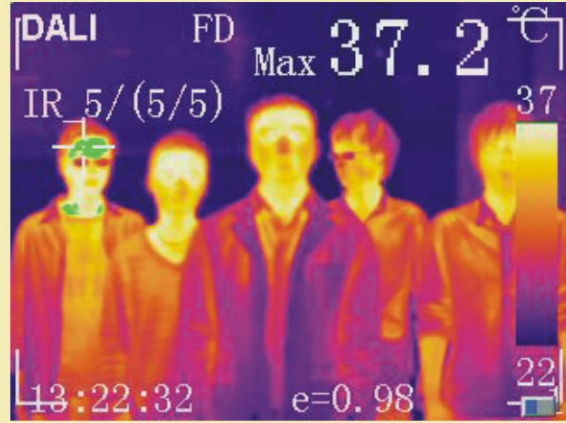
Non-contact detect

Non-contact temperature measurement to ensure own secure and safety to prevent the intercross infection for operators.

Auto alarm

Provide quick and easy way to scanning population without interfere the normal order.

Stock ready for delivery



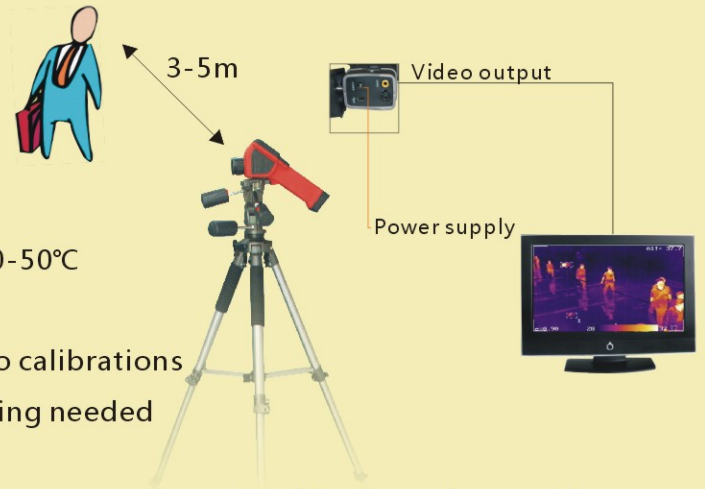
Temperature Monitoring Thermal images

For body temperature check



TE-W

- Temperature ranges : 20-50°C
- Portable, light
- internal black body, auto calibrations
- Easy operation, no training needed
- 50/60Hz realtime
- Cost effective



Multi-view observation

Professional



DL700E

- Picture in picture display
- Full screen(maximum, minimum temperature alarm(voice,color)
- 50/60Hz realtime
- Auto focus



Picture in Picture

Online mode



DM60

- LAN connection
- 50/60Hz realtime
- Auto focus
- 24hours working
- MPEG4 storage

