



Thermal Imaging Camera

Industry temperature measurement

DL700E+

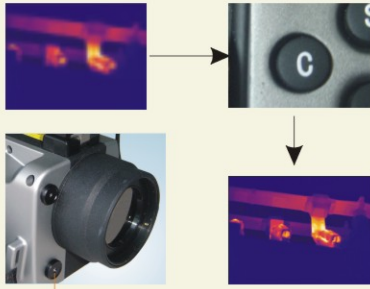
384x288 uncooled FPA detector

Auto focus, dual storage, full screen CCD



www.dali-tech.com

DL700E+ Thermal Imaging Camera



CCD Camera

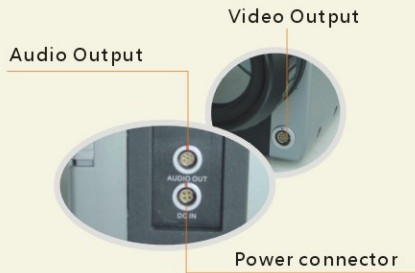
Auto focus



One button operation



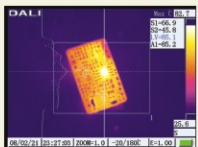
Optional LCD remote units



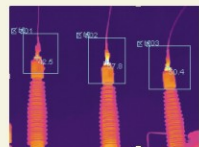
Audio Output

Video Output

Power connector



Line measurement



Area measurement



Optional Lenses

DL700E+ offers outstanding image quality and temperature measurement performance in an affordable, rugged and easy to use infrared camera. It works as a professional tool effective in different applications such as power plant, petro chemicals, scientific research, fire fighting, and building inspection, metallurgy, etc.



Parameter

Item	DL700E+	
Detector characteristics	Detector type	Uncooled FPA microbolometer
	Array size/format	384×288
Image characteristics	Field of view/min focus distance	16°×12°/0.5m
	Spatial resolution (IFOV)	0.88mrad
	Thermal sensitivity	≤0.06°C@30°C
	Framerate	50/60Hz
	Focus	Auto/electronic focus
	Electronic zoom	1-8X continuous
	Spectral range	8-14μm
Image display	Built-in visual camera	300,000 pixels, Pic. in Pic. or full
	Viewfinder	Built-in high-resolution color LCD
Measurement	LCD	High-resolution color LCD, 640×480
	Temperature ranges	-20°C- +600°C, optional up to +2000°C
	Accuracy	± 2 °C or ± 2% of reading, Whichever is greater
	Measurement correction	Automatic/manual
	Measurement mode	Up to 10 movable spots. Up to 5 movable areas (maximum, minimum and average temperatures). Line profile. Isotherm. Temperature difference. Alarm(voice, color)
	Color palette	9 palettes changeable (Iron, Rainbow, Grey and Grey inverted, etc.)
	Image adjustment	Auto/manual gain and brightness
	Setup functions	Date/time, temperature unit, language
	Emissivity correction	Variable from 0.01 to 1.0 or select from listings in pre-defined material list
	Ambient temperature correction	Automatic corrections according to user input
	Atmospheric transmission correction	Automatic correction according to user input object distance, relative humidity, ambient temperature
	Image storage	Storage card
Storage mode		Automatic/manual single image saving
File format-thermal		JPEG, 14 bit thermal image with measurement data
File format-visual		JPEG or linked with corresponding thermal image(Pic. in Pic.)
Voice annotation		Input via built-in microphone Up to 40 seconds of digital voice per image stored with image
Laser pointer	Image improvement	Averaging(S2, S4, S8, S16), Spatial filter
	Laser pointer	Class 2, 1mw/635nm(red)
Power supply	Battery type	Li-Ion, rechargeable
	Battery operating time	2 hours continuous operation
	Charging system	Intelligent charger or power supply adaptor(optional) online charge
	Power saving	YES
	External power	10-15V DC
Environment	Operating temperature	-15°C- +50°C
	Humidity	≤90%non-condensing
	Encapsulation	IP54
Physical characteristics	Weight	1.69Kg
	Dimensions	305mm×130mm×135mm
	External DC input	Yes
Interface	Audio output	Yes
	Video output	PAL/NTSC/ VGA
	USB	Image (thermal and visual), measurement data and voice transfer to PC

▲ The information contained in this document is subject to change without notice