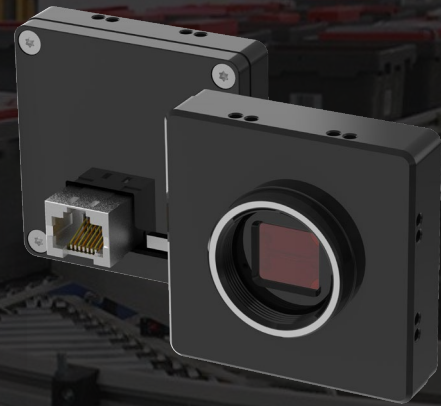


DH-MV-AB3A04MG000E

- 1Gbps Ethernet interface , max 100m transmission
- 128MB on-board frame buffer
- Support multiple image data formats
- Software trigger/Hardware trigger/Free run mode
- Compatible with GigE Vision V2.0 protocol and GenICam standard



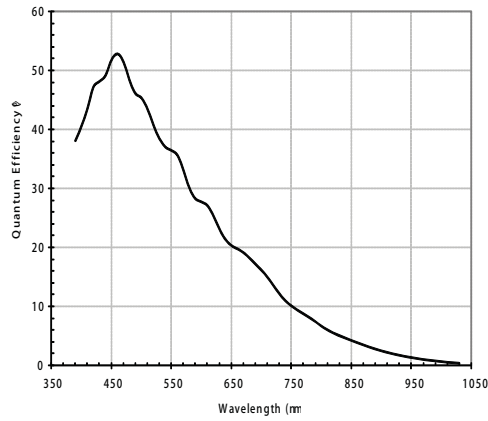
Specification

Model	Sensor	Sensor type	Shutter	Resolution	Frame rate (fps)	Bit depth	Interface	Mono/Color	Pixel size (μ m)	Sensor size
DH-MV-AB3A04MG000E	MT9J003	CMOS	Rolling	3840x2748	10	12	GigE	Mono	1.67x 1.67	1/2.3"

Model	DH-MV-AB3A04MG000E
Effective Pixels	10.6MP
SNR	>32dB
Dynamic Range	65dB
GPIO	8 pin socket interface: 1 Opto-isolated input, 1 Opto-isolated output, 1 output without opto isolation
Image Format	Mono8/10/10Packed/12/12Packed
Binning	Support
ROI	Support
Gain	X1~X32
Gamma	Range from 0 to 4, support LUT
Exposure Time	25 μ s~1s
Sync mode	Software trigger/Hardware trigger/Free run mode
Image Buffer	64MB
SPC	Support
FPN	Support
User Setting	Support two sets of user-defined configurations
Dimensions	55mmx55mmx14mm
Weight	80g
Power Supply	DC power supply by 8 pin Socket connector, with voltage range from 6V to 26V
Power Consumption	12V \approx 2.9W
Lens Mount	C
Temperature	Storage temperature:-30° C~ + 80° C; Operation temperature:-30° C~+50° C

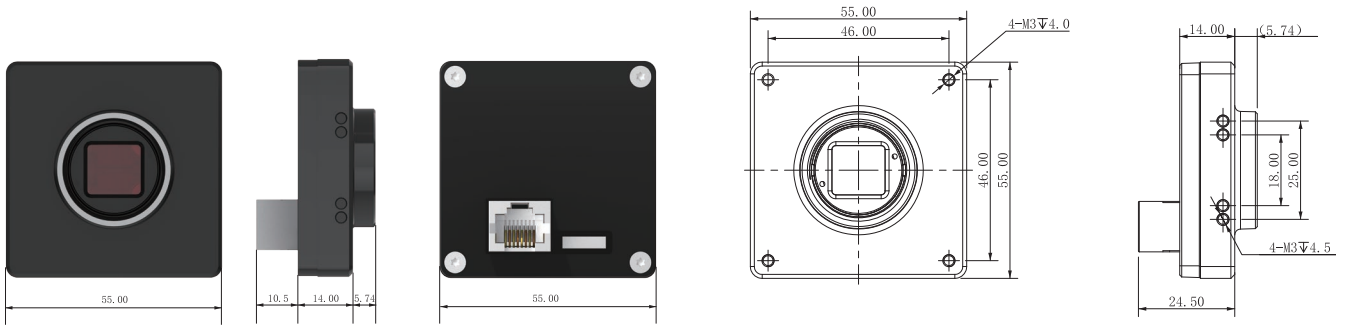
Spectrogram

AB3A04MG000E

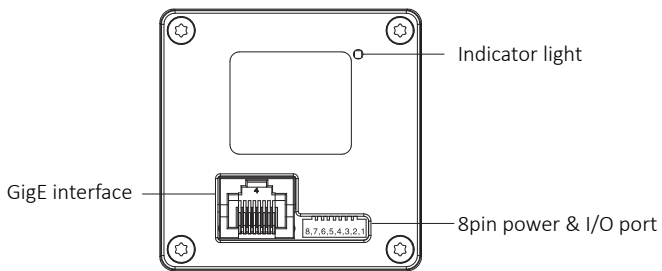


Quantum Efficiency Curve for Mono Sensor

Dimensions



IO Interface Instruction



Pin	Signal	Description
1	Power	DC 6V-26V input
2	GND	Ground
3	Line2	Output
4	Line1	Opto-isolated input
5	Line0	Opto-isolated output
6	IO GND	Opto-isolated ground
7	-	NC ¹
8	-	NC ²