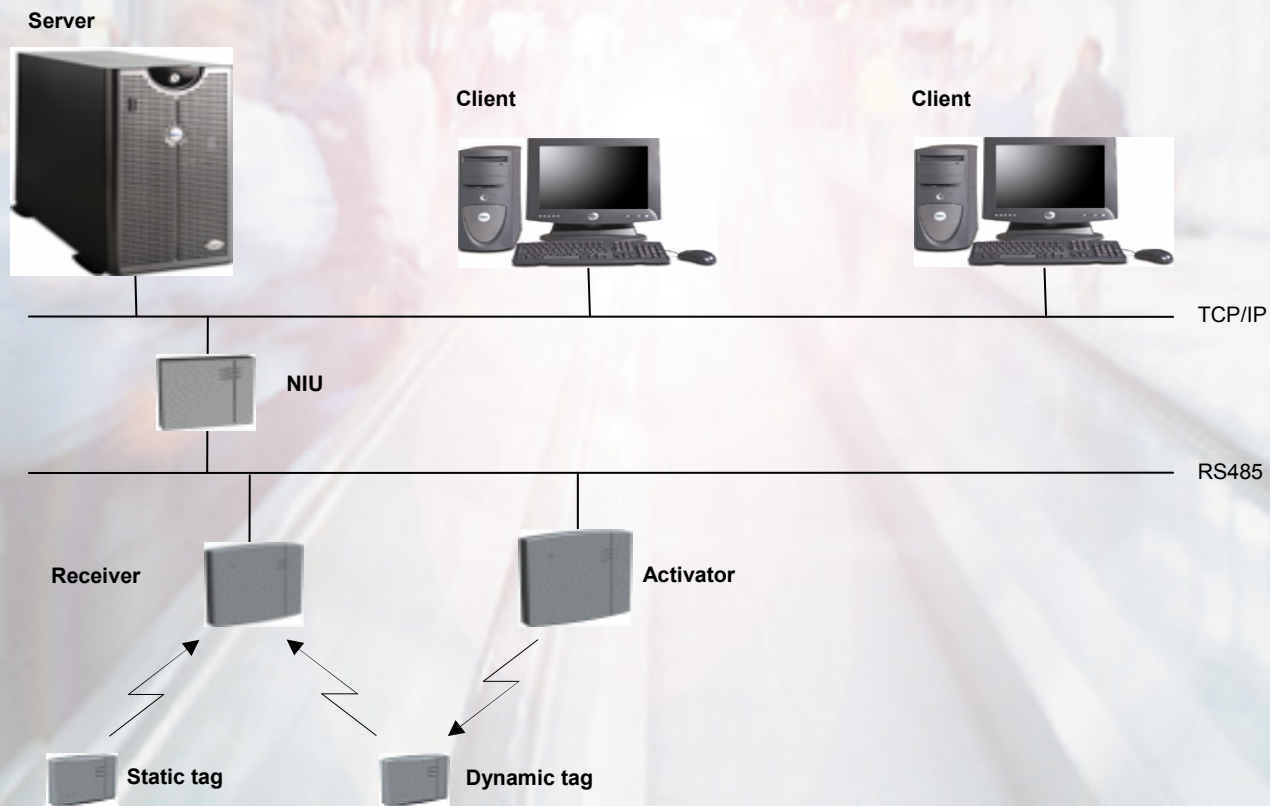
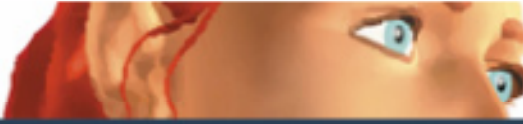


RFAPP System Configuration





Key Features and System Components

Asset Tag

- Auto-registering
- Tamper switch
- Anti-tamper contacts
- Movement sensor
- Buzzer Alarm
- Battery Management System
- Replaceable battery
- On/Off switch
- Easy mounting
- Longe Range RF Transmission (30 meter)
- Anti-Collision

Activator

- Plug-and-play
- Adjustable short range RF transmission
- Buzzer
- Power-On indicator
- Relay
- Also available in stand-alone version

Receiver

- Plug-and-Play
- Buzzer
- Power-On indicator
- Relay

Network Interface unit (NIU)

- Plug-and-Play
- TCP/IP –RS485 interface
- Tamper detection

Software

- Real-time event logging and alarm notifications
- Multi-user event handling
- User authorization levels
- Extended XML based reporting functionality
- Online and context sensitive help
- Intuitive user interface (Windows 2000 and Windows XP)
- Microsoft COM+-based API for 3rd party SW integration; requires Windows 2000 Server with SQL Server