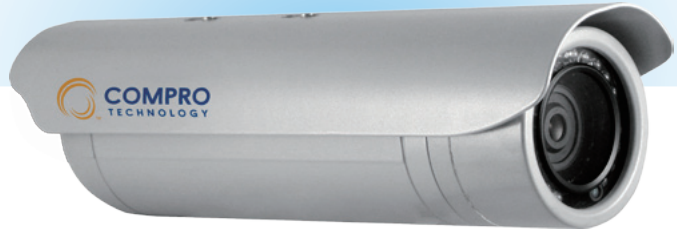


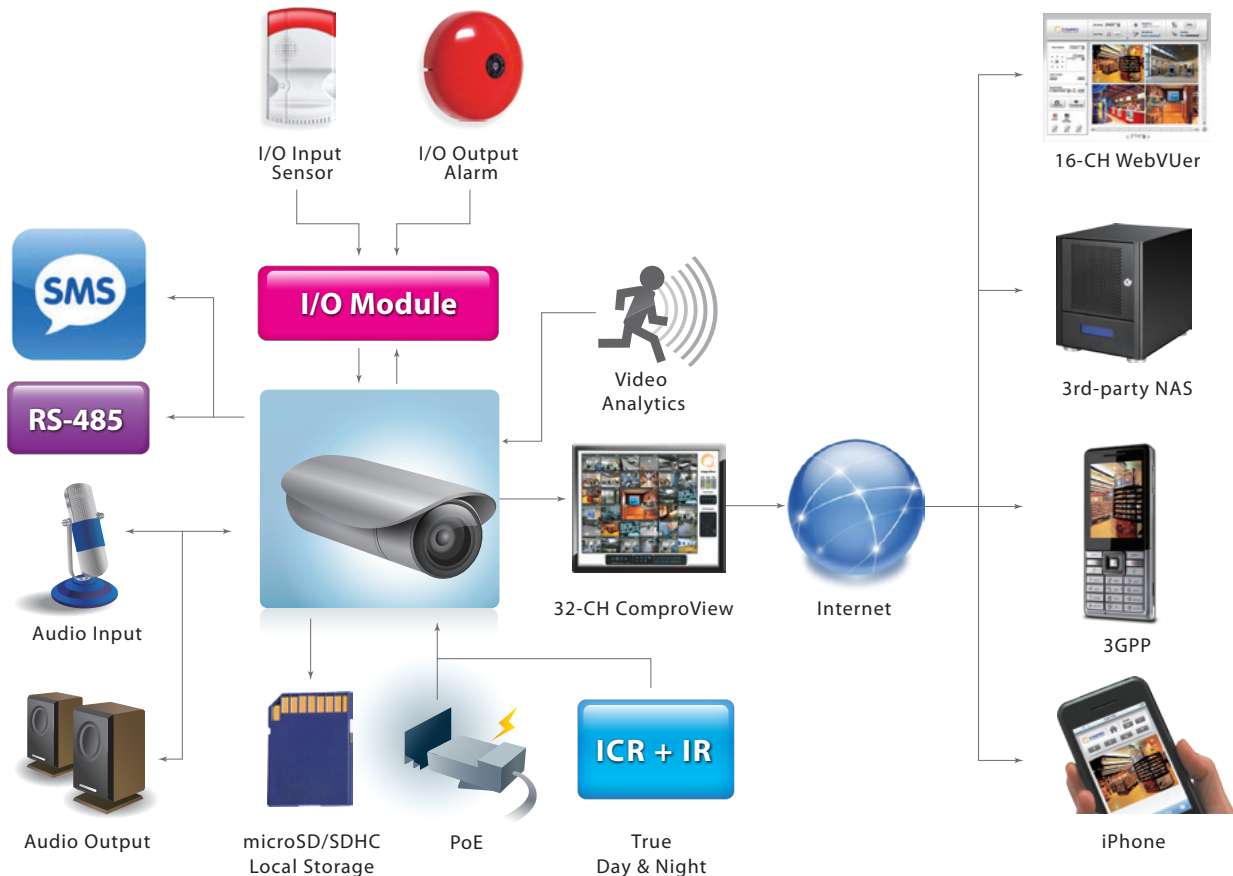
Outdoor Bullet Camera
NC450

HDTV 720P • 1.3M HD • AOI • H.264
Day/Night • PoE • IP66 • 2GB Storage

- 1/3" progressive scan CMOS image sensor
- AOI (area of interest) cropped from native 1600 by 1200 HD sensor image at max 15 FPS
- HDTV 720p resolution up to 20 FPS
- H.264, MPEG-4 and M-JPEG compressions
- Dynamic dual streaming, active bandwidth management, activity-adaptive streaming & Quality-of-Service (QoS)
- Two-way audio communication
- True Day & Night by ICR, IR LED
- HD vari-focal lens, f 3~9 mm, F1.2~2.1
- Intelligent video analytics
- Digital I/O and system integration by RS-485
- Power-over-Ethernet (PoE)
- IP66 weather resistance for outdoor applications
- 2GB local microSD storage & remote NAS storage
- 3GPP and M-JPEG mobile surveillance
- 16-CH WebVuer remote surveillance on major web browsers
- Free 32-CH ComproView video management system



Application Diagram



VIDEO

Sensor	1/3" progressive scan CMOS
Video Standard	Tri-codec: M-JPEG, MPEG-4, H.264
Secondary Channel	Dual streaming supported
Data Rate	Stream 1/2/3GPP, multi-level configurability
Dynamic Control	Active bandwidth management, activity adaptive streaming
Sensor Matrix	1600x1200
Resolution & Frame Rate	
Area of Interest (AOI)	1280x1024 cropped from native 1600x1200 up to 15 fps
Turbo Picture	1280x1024 up to 15 fps
Motion Adaptive	HDTV 720p (1280x720) up to 20 fps
Day / Night Illumination	ICR, IR LED x 18, effective 20 m
Minimum Illumination	0 Lux when IR on
Channel Division	1, 4CH; 16CH per WebVUer, sequential
Imaging	
Color Contour	Brightness, saturation, sharpness, multi-level configurable
Backlight	BLC, multi-level configurability
White Balance	Multi-scenario configurability
Electronic Shutter	Auto, manual (16 configurable levels)
Flickerless	50/60 Hz
Low-Light Behavior	Advanced configurations
Iris Level	Auto (DC iris)

AUDIO

Compression Format	G.711 PCM 64 Kbit/sec, bi-directional audio streaming
Audio Input / Output	Mic-in x 1, line-out x 1, 3.5 mm phone jack line out

PAN / TILT / ZOOM

Zooming	10x digital; fits web browser; 100%
Control	Pelco D scanner supported (via RS-485)

SYSTEM INTEGRATION

Sensor In / Alarm Out	In x 1, relay out x 1, terminal block line out
Device Integration	RS-485 x 1, terminal block line out
Intelligent Analytics	Video motion detection, tampering detection, loitering detection, audio detection, multi-zone/sensitivity
Triggering Event	Analytics, schedule, I/O, network failure
Triggering Reaction	SMS, snapshot, local/remote recording, e-mail, FTP, alarm output, PTZ preset go-to, ComproView notification
SDK	Yes

LOCAL STORAGE

Local Storage	Built-in 2GB microSD storage (upgradable)
Format	AVI (audio incl.), by events or schedule; JPEG, file name format customizable
Playback	Playback by event type (motion, I/O, schedule, audio), auto overwriting; never erase

NETWORK

Protocols	3GPP, ARP, DDNS, DHCP, DNS, FTP, HTTP, ICMP/IPv4, IGP, NTP, PPPoE, QoS, RSP, RTSP, SMTP, SSL, TCP/IP, UDP, UPnP
Ethernet	10/100 Base-T, autosensing, RJ-45
User Group	2 levels, unlimited users, ID/password protected, max 10 simultaneous users
Encryption	WEP, WPA-PSK, WPA2-PSK (via WiFi connection)
Diagnostics	Auto connectivity diagnosis, auto bandwidth detection, iWizard

REMOTE SURVEILLANCE

Mobile Surveillance	M-JPEG, 3GPP over Android, BlackBerry, iPhone, Windows Mobile (features vary)
Web Surveillance	WebVUer 16CH over Internet Explorer, Chrome, Firefox, Safari (features vary)
Advanced Surveillance	ComproView 32CH surveillance system

GENERAL

Unit Configuration	Rebooting, factory default, date/time synchronization, user profile management, firmware upgrade, OSD, date/time stamp, multilingual UI
User Authentication	ID, password
Firmware	HTTP mode, remote update
OSD	Text or image overlay, 4 locations
Language	Chinese Traditional, Chinese Simplified, German, Spanish, English, Japanese, Portuguese, Russian, Turkish, Ukrainian, Bulgarian
Regulatory	CE, FCC

MECHANICAL

Lens Type	HD vari-focal, f 3~9 mm, F1.2~2.1, auto iris
Weather Resistance	IP66
Casing	Bullet, silver grey
Dimensions	264 x 77 x 74 mm (L x W x H, including sun shroud and connector)
Weight (Net)	800 g (1.76 lb.)

ELECTRICAL

Input Voltage	DC 12V, AC 24V or PoE, terminal block line out
Power-over-Ethernet	IEEE 802.3af Class 3

ENVIRONMENTAL

Operating Temperature	-20~55 °C / -4~131°F (with built-in heater)
Humidity	20~80% RH non-condensing

BROWSING REQUIREMENT

OS	Microsoft Windows XP SP3, Vista SP1, 7 (x86/x64)
Processor	Intel 1.7 GHz, 512 MB RAM
Web Browser	Microsoft Internet Explorer 6.0 or above, non-IE browsers require 3rd-party VLC codec

OPTIONAL

Accessories	Camera bracket
--------------------	----------------

* Specifications are subject to change without prior notice.

* For complete product information, please contact a Compro Authorized Security Professional near you or write to security@comprousa.com.



© Copyright 2010 Compro Technology, Inc.. All rights reserved.

4F. No. 12, Alley 6, Lane 45, Pao Shin Road, Hsin Tien City, Taipei, Taiwan Tel. +886 2 29180169 Fax. +886 2 29152389