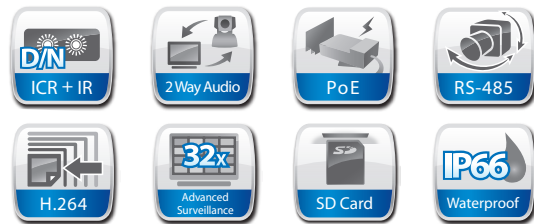
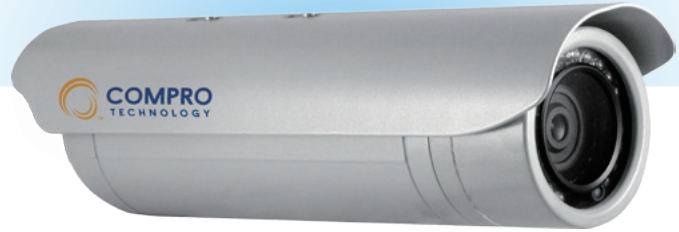


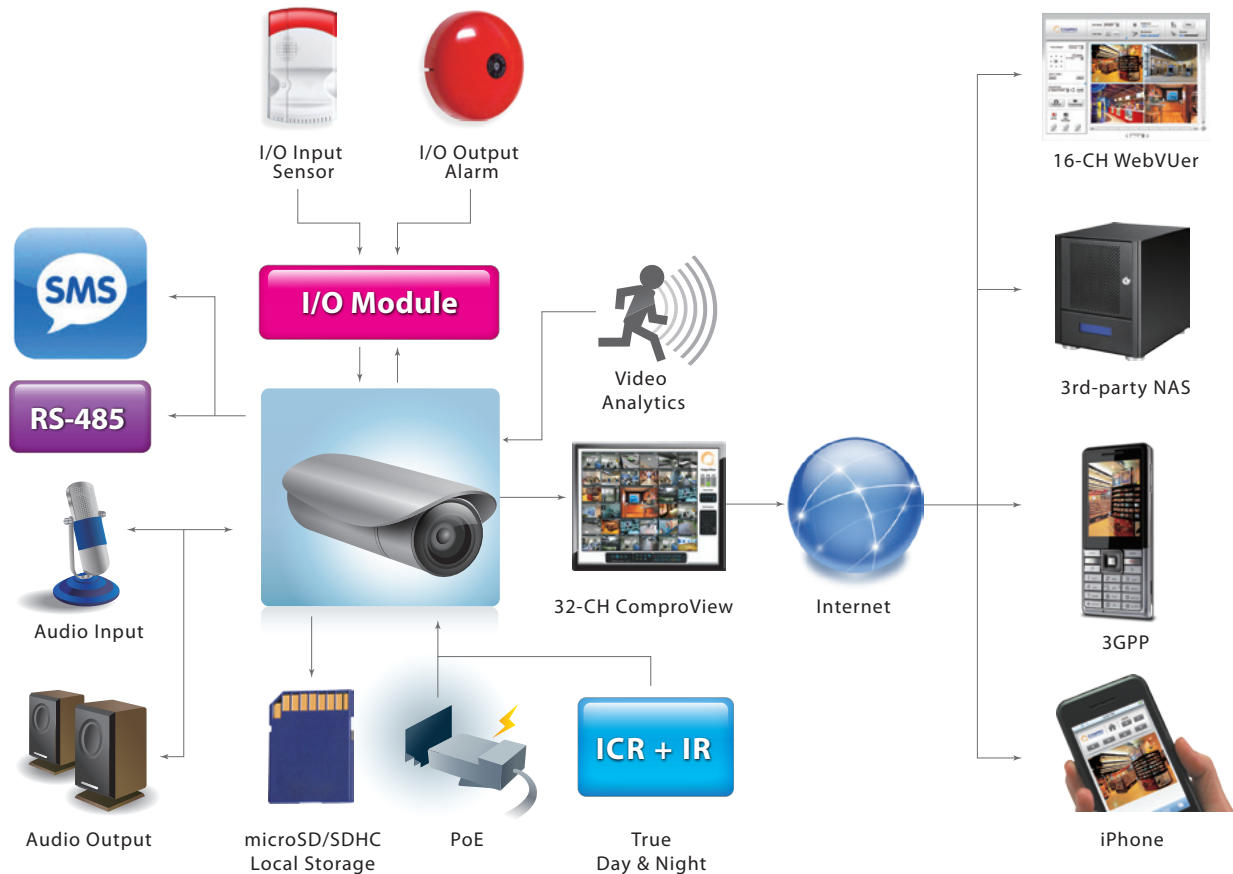
Outdoor Bullet Camera  
**NC420**

Superior Night Vision • 60 FPS • H.264  
Day/Night • PoE • IP66 • 2GB Storage

- 1/4" progressive scan CMOS sensor
- Superior low-light performance up to 60 FPS
- H.264, MPEG-4 and M-JPEG compression
- Dynamic dual streaming, active bandwidth management, activity-adaptive streaming, Quality-of-Service (QoS)
- Two-way audio communication
- True Day & Night by ICR, IR LED
- Megapixel 4.0 mm lens, large F1.5 aperture
- Intelligent video analytics
- Digital I/O & System integration by RS-485
- Power-over-Ethernet (PoE)
- IP66 weather resistance for outdoor applications
- 2GB on-board local storage (upgradable)
- 3GPP and M-JPEG mobile surveillance
- 16-CH WebVuer remote surveillance on major web browsers
- Free 32-CH ComproView advanced video management system



### Application Diagram



## VIDEO

<b>Sensor</b>	1/4" progressive scan CMOS
<b>Video Standard</b>	Tri-codec: M-JPEG, MPEG-4, H.264
<b>Secondary Channel</b>	Dual streaming supported
<b>Data Rate</b>	Stream 1/2/3GPP, multi-level configurability
<b>Dynamic Control</b>	Active bandwidth management, activity adaptive streaming
<b>Sensor Matrix</b>	640x480
<b>Resolution &amp; Frame Rate</b>	
<b>Turbo Picture</b>	640x480 up to 60 FPS
<b>Motion Adaptive</b>	640x480 up to 30 fps
<b>Day / Night Illumination</b>	ICR, IR LED X 18, effective 20 m
<b>Minimum Illumination</b>	0 Lux when IR on
<b>Channel Division</b>	1, 4CH; 16CH per WebVUer, sequential
<b>Imaging</b>	
<b>Color Contour</b>	Brightness, saturation, sharpness, multi-level configurable
<b>Backlight</b>	BLC, multi-level configurability
<b>White Balance</b>	Multi-scenario configurability
<b>Electronic Shutter</b>	Auto, manual (16 configurable levels)
<b>Flickerless</b>	50/60 Hz
<b>Low-Light Behavior</b>	Advanced configurations
<b>Iris Level</b>	Auto (DC iris)

## AUDIO

<b>Compression Format</b>	G.711 PCM 64 Kbit/sec, bi-directional audio streaming
<b>Audio Input / Output</b>	Mic-in x 1, line-out x 1, 3.5 mm phone jack line out

## PAN / TILT / ZOOM

<b>Zooming</b>	10x digital; fits web browser; 100%
<b>Control</b>	Pelco D scanner supported (via RS-485)

## SYSTEM INTEGRATION

<b>Sensor In / Alarm Out</b>	In x 1, relay out x 1, terminal block line out
<b>Device Integration</b>	RS-485 x 1, terminal block line out
<b>Intelligent Analytics</b>	Video motion detection, tampering detection, loitering detection, audio detection, multi-zone/sensitivity
<b>Triggering Event</b>	Analytics, schedule, I/O, network failure
<b>Triggering Reaction</b>	SMS, snapshot, local/remote recording, e-mail, FTP, alarm output, PTZ preset go-to, ComproView notification
<b>SDK</b>	Yes

## LOCAL STORAGE

<b>Local Storage</b>	2GB on-board storage (upgradable microSD)
<b>Format</b>	AVI (audio incl.), by events or schedule; JPEG, file name format customizable
<b>Playback</b>	Playback by event type (motion, I/O, schedule, audio), auto overwriting; never erase

## NETWORK

<b>Protocols</b>	3GPP, ARP, DDNS, DHCP, DNS, FTP, HTTP, ICMP/IPv4, IGP, NTP, PPPoE, QoS, RSP, RTSP, SMTP, SSL, TCP/IP, UDP, UPnP
<b>Ethernet</b>	10/100 Base-T, autosensing, RJ-45
<b>User Group</b>	2 levels, unlimited users, ID/password protected, max 10 simultaneous users
<b>Encryption</b>	WEP, WPA-PSK, WPA2-PSK (via WiFi connection)
<b>Diagnostics</b>	Auto connectivity diagnosis, auto bandwidth detection, iWizard

## REMOTE SURVEILLANCE

<b>Mobile Surveillance</b>	M-JPEG, 3GPP over Android, BlackBerry, iPhone, Windows Mobile (features vary)
<b>Web Surveillance</b>	WebVUer 16CH over Internet Explorer, Chrome, Firefox, Safari (features vary)
<b>Advanced Surveillance</b>	ComproView 32CH surveillance system

## GENERAL

<b>Unit Configuration</b>	Rebooting, factory default, date/time synchronization, user profile management, firmware upgrade, OSD, date/time stamp, multilingual UI
<b>User Authentication</b>	ID, password
<b>Firmware</b>	HTTP mode, remote update
<b>OSD</b>	Text or image overlay; 4 locations
<b>Language</b>	Chinese Traditional, Chinese Simplified, German, Spanish, English, Japanese, Portuguese, Russian, Turkish, Ukrainian, Bulgarian
<b>Regulatory</b>	CE, FCC

## MECHANICAL

<b>Lens Type</b>	HD, f 4.0 mm, F1.5, fixed iris, FOV 60° (H)
<b>Weather Resistance</b>	IP66
<b>Casing</b>	Bullet, silver grey
<b>Dimensions</b>	264 x 77 x 74 mm (L x W x H, including sun shroud and connector)
<b>Weight (Net)</b>	800 g (1.76 lb.)

## ELECTRICAL

<b>Input Voltage</b>	DC 12V, AC 24V or PoE, terminal block line out
<b>Power-over-Ethernet</b>	IEEE 802.3af Class 3

## ENVIRONMENTAL

<b>Operating Temperature</b>	-20~55 °C / -4~131°F (with built-in heater)
<b>Humidity</b>	20~80% RH non-condensing

## BROWSING REQUIREMENT

<b>OS</b>	Microsoft Windows XP SP3, Vista SP1, 7 (x86/x64)
<b>Processor</b>	Intel 1.7 GHz, 512 MB RAM
<b>Web Browser</b>	Microsoft Internet Explorer 6.0 or above, non-IE browsers require 3rd-party VLC codec

## OPTIONAL

<b>Accessories</b>	Camera bracket
--------------------	----------------

\* Specifications are subject to change without prior notice.

\* For complete product information, please contact a Compro Authorized Security Professional near you or write to security@comprousa.com.



© Copyright 2010 Compro Technology, Inc.. All rights reserved.

4F. No. 12, Alley 6, Lane 45, Pao Shin Road, Hsin Tien City, Taipei, Taiwan Tel. +886 2 29180169 Fax. +886 2 29152389