



Cloudvue

Creating smart, secure and healthy workplaces with elegantly simple cloud video surveillance, access control and intelligent security solutions.



Discover what Cloudvue can do for you

We invented cloud video surveillance in 1999. We have been continuously innovating and pushing the boundaries of cloud technology ever since we started. This makes us the leading experts in cloud video surveillance and gives Cloudvue a proven track-record for reliability.

Today, thousands of businesses and organizations trust Cloudvue to simplify surveillance, streamline access control, and provide powerful intelligence that improves security operations and helps with organizational efficiency.

Learn more about Cloudvue's 20 years of cloud video surveillance and security technology innovation at www.Cloudvue.io today.

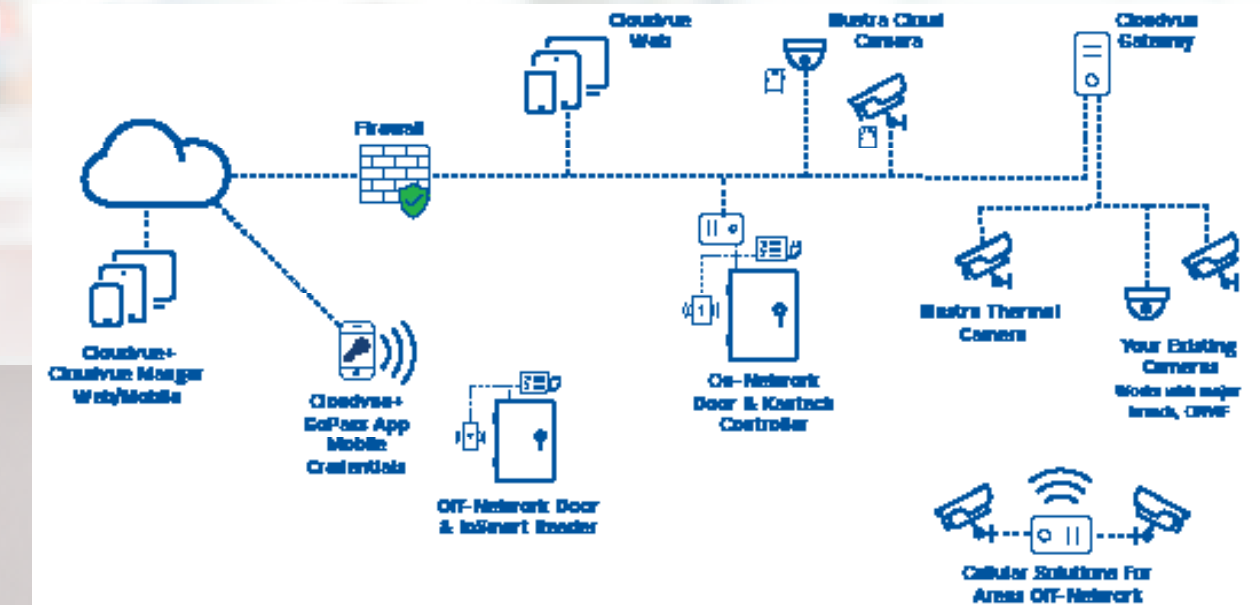
Security as a Service.
Cloud Video Surveillance.
Cloud Access Control.



Cloudvue Architecture

Today's physical security solutions live in the cloud and they bring all the typical benefits associated with any digital transformation

- **Centralized Management** Control cameras, doors, alerts and permissions across all your buildings from one browser or mobile device, around the world.
- **Faster Intelligence** With the cloud, sharing information has never been faster. This increase in speed and accessibility transforms video surveillance footage from forensic data into actionable information that can be quickly distributed across entire organizations.
- **Scalable Operations** An unlimited number of cameras and access control points can be added to a single instance. Custom floor plan views, map views, and powerful dashboards help keep data organized for one or thousands of locations.
- **Streamlined Costs** Organizations typically see a reduction in the total cost of security by 20% to 30% by moving expensive on premises security infrastructure to the cloud.



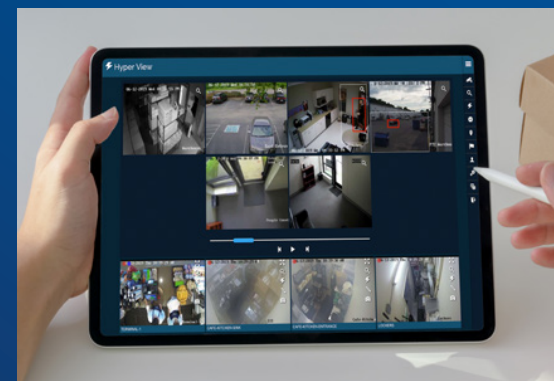
Modern microservices architecture, an open RESTful API with 500+ End Points and advanced integrated cyber security and privacy.

Smarter

Focus on moments that matter the most with smarter technology

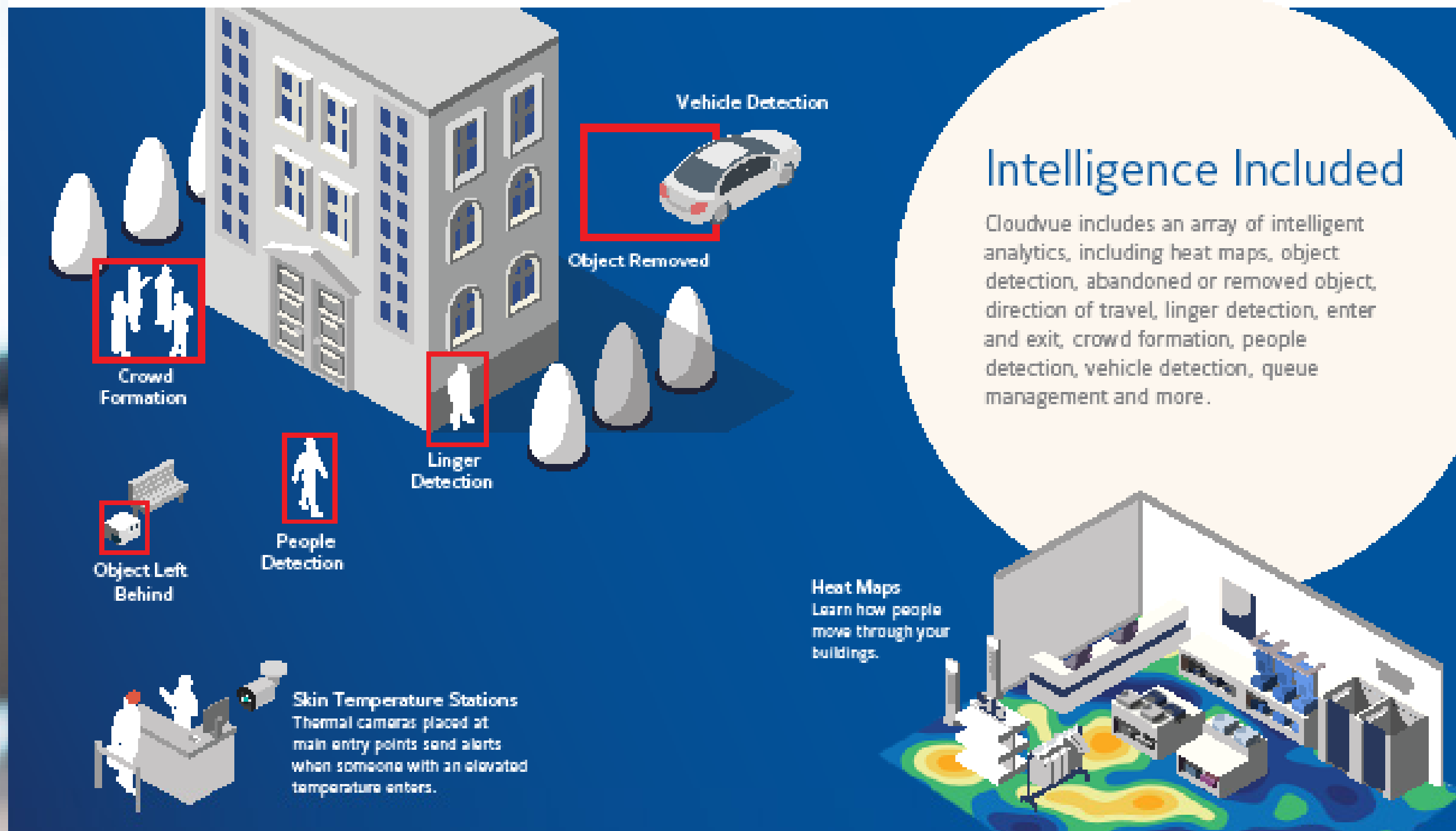
The processing power of the cloud increases accessibility to an array of intelligent, industry-focused tools designed to help organizations improve security operations and drive operational efficiency beyond physical security.

- **Smarter Security Watch** over more in less time by leveraging powerful analytics with alerts and custom views. Run motion analytics and heat map reports to see how people move through your buildings. Receive alerts when objects are removed or left behind. Leverage intelligent tools that know the difference between someone walking by or suspiciously lingering around and much more.
- **Healthier Operations** The benefits of smarter technology extend beyond security. Keeping watch over business operations and being able to remotely grant access can increase operational efficiency. Tools like skin temperature alerts can help provide healthier work environments for employees, clients and customers.



Find it fast

Scan through 24 hours of recorded video on up to 100 cameras at a time in just 60 seconds with Hyper View.



Security as a Service

Intelligent cloud technologies and elegant security solutions now delivered as a service

Cloudvue makes video surveillance and access control affordable. Access cameras, gateway devices, and control access across an entire operation with centrally managed software and secure cloud connected hardware.

- **SaaS Benefits** Software is automatically updated. New intelligence, upgrades and features are included in software subscriptions with no extra costs.
- **Flexible Purchasing** Organizations can choose to purchase new hardware up-front or through subscription options.



Security as a Service sets us apart. We are not just selling something once and we don't sell hardware that locks you into our solutions, making it too expensive to leave. We offer a true relationship that we have to earn every day. Our amazing support, customer service, and continuous innovation is how we prove value to our clients and it's why they choose to work with us year after year.

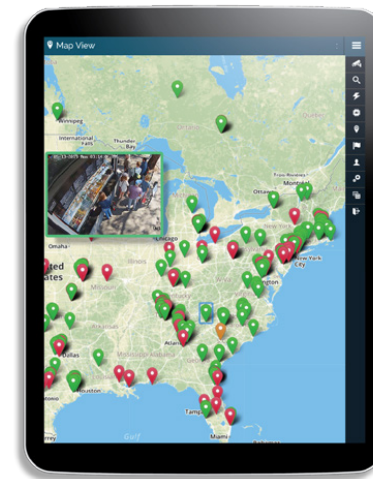
– Martin Renkis, VP Innovation and OpenBlue Security at Johnson Controls, Cloudvue Founder



Video Surveillance

Leveraging the cloud to eliminate cost and simplify surveillance

- **Use Your Existing Cameras** Cloudvue Gateways can connect almost every camera on the market today. Use your current cameras or buy the brands you like the most and have them all connected under one centrally managed platform.
- **Add New Cloud Cameras** Choose from a variety of cloud cameras up to 8MP and PTZ with built-in storage and smarts - no need to purchase NVRs, backup servers, or bridges. Every camera includes integrated intelligence and supports recording in camera, in cloud or both.
- **No Network, No Problem** Cellular solutions plug into a standard power outlet and connect two cameras directly to the cloud using 3G, 4G and 5G networks. These are commonly used for gates, parking lots, remote properties, construction sites and other areas without typical network access.
- **Video Storage Your Way** Store data locally using cloud cameras or choose from a variety of cloud gateways to meet any storage challenge. Cloud storage is available with 4K resolution for up to 5 years. Hybrid storage options are also available.



Centralized surveillance management for your entire organization



Connect existing cameras with Cloud Gateways

Connect Cloud Cameras directly to the cloud in seconds

Simple to use live video

Powerful technology makes searching and sharing video faster

Use your existing cameras

Replace your current NVR with a Cloudvue Gateway and turn your existing camera system into an intelligent cloud platform. ONVIF compliant and designed to work with thousands of the most popular camera models from dozens of the leading manufacturers, Cloudvue Gateways let you move your current cameras into the cloud effortlessly and cost effectively. Secure and cost-effective video archiving available from 7 days to 5 years. 60 second plug and play setup with the Cloudvue service.



Supports up to 16 cameras



Supports up to 40 cameras



Supports up to 100 cameras



Supports up to 4 cameras



TCG16K

SUPPORT UP TO 16 CAMERAS
 Compact, cost effective gateway with integrated local storage. High performance surveillance hard drive. ONVIF compliant to support most existing camera. Two ethernet ports. Local cloud web interfaces. 60 second cloud registration without port forwarding or opening ports. Seamless cloud based system and video management service as well as unlimited cloud video storage options. Linux OS. 3 Year Warranty.

System	
Operating System	Ubuntu Linux
Chassis	IP51 Embedded Fanless
CPU	ATOM E3940
Memory	4GB
Max Hard Drives	1
Max Storage	2TB



TCG100R

SUPPORT UP TO 100 CAMERAS
 High capacity 2U rack cloud gateway with with RAID5 integrated local storage. High performance Western Digital Purple surveillance hard drives. ONVIF compliant to support most existing camera. Four ethernet ports. Local and cloud web interfaces. 60 second cloud registration without port forwarding or opening ports. Seamless cloud based system and video management service as well as unlimited cloud video storage options. Linux OS. 3 Year Warranty.

System	
Maximum Hard Drives	12
Maximum Storage	120TB, RAID5
Operating System	Ubuntu Linux
CPU	Intel® Xeon® processor E5-2600 v4† v3, E5-1600 v4†/v3
Memory	Up to 32GB DDR4 SDRAM
NIC	4 x 1 Gbps
USB	2 USB 3.0 ports (rear), 2 USB 2.0 ports (rear)
Serial	
Monitor Output	1 VGA
Audio Output	
Power supply	920W, 94 PLUS Platinum Certified, redundant
Max power consumption	0.957 kWh
Dimensions (D x W x H)	25.6" x 17.2" x 3.5" 648 x 437 x 89 mm
Weight	34 lbs (15.4 kg)



TCG4D1

SUPPORT UP TO 16 CAMERAS
 Compact, cost effective gateway with integrated local storage. High performance surveillance hard drive. ONVIF compliant to support most existing camera. Two ethernet ports. Local cloud web interfaces. 60 second cloud registration without port forwarding or opening ports. Seamless cloud based system and video management service as well as unlimited cloud video storage options. Linux OS. 3 Year Warranty.

System	
Operating System	Ubuntu Linux
Chassis	IP51 Embedded Fanless
CPU	ATOM E3940
Memory	4GB
Max Hard Drives	1
Max Storage	1TB



TCG24T



TCG32P



TCG40S

SUPPORT UP TO 24 CAMERAS	SUPPORT UP TO 32 CAMERAS	SUPPORT UP TO 40 CAMERAS
4 bay cloud gateway with integrated local storage. High performance Western Digital Purple surveillance hard drives. ONVIF compliant to support most existing camera. Two ethernet ports. Local and cloud web interfaces. 60 second cloud registration without port forwarding or opening ports. Seamless cloud based system and video management service as well as unlimited cloud video storage options. Linux OS. 3 Year Warranty.		

System	
Maximum Hard Drives	4
Maximum Storage	40TB
Operating System	Ubuntu Linux
CPU	Intel® 7th/6th Gen Core i7/i5/i3 series, Intel® Celeron®
Memory	Up to 32GB DDR4 SDRAM
NIC	2 x 1 Gbps
USB	USB 4 USB 3.0 ports (rear), 2 USB 2.0 ports (front), 1 USB 2.0 Type A
Serial	2 COM ports (2 rear)
Monitor Output	1 HDMI, 1 DP (Display Port), 1 DVI-I
Audio Output	1
Power supply	250W, 80 PLUS Bronze Certified
Max power consumption	0.3 kWh
Dimensions (D x W x H)	11" x 8.27" x 9.45" 279 x 210 x 240 mm
Weight	15 lbs (6.8 kg)

Cloud Cameras

Cost effective Cloudvue cloud cameras have built-in storage and smarts - no need to purchase NVRs, backup servers, or bridges. Every camera includes integrated intelligence and supports recording in camera, in cloud or both - all at up to super high 4K resolution for up to 5 years.





3MP Compact Mini-Dome 2.8mm

Product Number	TCCF303C12
	Illustra Flex Gen3 Compact Mini-Dome camera is designed to offer a high-image quality, and feature rich surveillance option for a wide range of applications. Also, the Compact Mini-Dome features built-in IR illuminators to produce clear images at an effective distance in a variety of low light conditions.
Resolution	2048x1536/ 1920x1080/ 1664x936/ 1280x720/ 1024x576/ 640x480/ 640x360/ 480x360/ 384x288
Dimensions	112 x 72mm (4.41 x 2.83 in)
Max Frame Rate	H.265/H.264: Max. 60fps MJPEG: Max. 20fps
Video Compression	MJPEG, H.264, H.264 IntelliZip, H.265 and H.265 IntelliZip
Smart Codec	IntelliZip
Imaging Device	1/2.8" 3.21MP CMOS
Effective Pixels	2065(H) x 1553(V)
Min Illumination	Color: min 0.05 lux (1/30sec, 30IRE) BW: 0.005Lux
Focal Length	2.8mm fixed focal
Max. Aperture Ratio	F2.0
Angular Field of View	H: 100.13° V: 73.79° D: 128°
Focus Control	Fixed (peak focus at 5m)
Lens Type	Fixed
IR Viewable Length	15m (49.21ft) including smart IR control
Day & Night	Auto Low/ Auto Mid(Default)/ Auto High/ Manual/ Forced Color/ Force B&W
Backlight Compensation	Exposure Weighting: Top, Bottom, Left, Right, Full, Centre, Spot
Wide Dynamic Range	True WDR 140db Technologies
Digital Noise Reduction	2D&3DNR
Signal to Noise Ratio (SNR)	50db
Digital Image Stabilization	No
Motion Detection	3ea, polygonal zones
Privacy Masking	9ea, rectangular zones
Gain Control	Automatic & Manual (3dB increments)
White Balance	Automatic Wide, Automatic Normal (Default), Manual
Lens Distortion Correction	Support
Electronic Shutter Speed	Minimum 1/4s, Maximum 1/10,000s
Video Rotation	Corridor Mode, Mirror & Flip

Alarm I/O	No
Alarm Triggers	Motion detection, Tampering detection, Defocus detection
Alarm Events	Onboard recording, Snapshot, Notification via e-mail, FTP upload, CIFS upload
Micro USB	WiFi Installation Support via Illustra Mobile Toolkit
Pan/Tilt/Rotate	
Pan/Tilt/Rotate Range	0°~350° / 0°~67° / 0°~355°
Video Intelligence Analytics	
Standard	Tampering, Defocus/Motion Detection
Network	
Ethernet	RJ-45(10/100BASE-T)
Bitrate Control	H.264/H.265: CBR or VBR or CVBR
Streaming	Multiple streaming (up to 3 profiles)
Audio Compression	G.711 alaw and ulaw selectable G.711 8KHz
Protocol	TCP/IP, IPv4, IPv6, TCP, UDP, HTTP, FTP, DHCP, WS-Discovery, DNS, DDNS, RTP, RTCP, RTSP, TLS, Unicast, Multicast, NTP, ICMP, IGMP, SMTP, WS-Security, IEEE 802.1x, PEAP, EAP-TLS, EAPoL, SSH, HTTPS, SOAP, WSAddressing, CIFS, SNMP, UPNP, RTSP, LLDP
Security	TLS - RFC5246 v1.2, HTTPS (HTTP over TLS) - RFC2818, WS-Security, Certificate Management, Multi-Level Password Protection, IP Address/Filtering, HTTPS Encryption, One-Click Security Hardening, User Access Log, Validate Complex Credentials, Disabling Unused Protocols, IEEE/802.1x Including: PEAP EAP-TLS, EAPoL
Storage	Micro SD/SDHC/SDXC 1slot 512GB
Application Programming Interface	iAPI-3
ONVIF-Compliant	Profile S
Memory	512MB RAM, 512MB Flash
Environmental	
Operating Temperature/Humidity	-40°C ~ +50°C* (-40°F ~ +122°F) Up to 5 concurrent hours at 60°C / Less than 90% RH.
Storage Temperature/Humidity	-40°C ~ +55°C (-40°F ~ +131°F)/ Less than 90% RH
Environmental	IP66/ IP67
Vandal Resistance	IK10
Electrical	
Input Voltage	PoE 802.3af (802.3at Type 1)
Power Consumption	PoE: Max 8.1W
Mechanical/Regulatory	
Color/Material	White/Aluminum
Safety	UL62368-1; CAN/CSA-C22.2 No. 62368-1, BIS IS13252 Part 1:2010
Emissions	FCC Part 15 Class A; EN55032 Class A; AS/NZS CISPR 32 Class A; ICES-003/NMB-003 Class A
Immunity	EN50130-4
Environment	RoHS/WEEE, REACH
NDAA Compliant	Yes



8MP Compact Mini-Dome 4.27mm

*Advanced analytics and face detection subject to future firmware release

Product Number	TCCF308C15
	Illustra Flex Gen3 Compact Mini-Dome camera is designed to offer a high-image quality, and feature rich surveillance option for a wide range of applications. Also, the Compact Mini-Dome features built-in IR illuminators to produce clear images at an effective distance in a variety of low light conditions.
Resolution	3840x2160/ 3264x1840/ 2688x1520/ 1920x1080/ 1664x936/ 1280x720/ 1024x576/ 960x544/ 816x464/ 640x360/ 480x272
Dimensions	112 x 72mm (4.41 x 2.83 in)
Max Frame Rate	H.265/H.264: Max. 60fps MJPEG: Max. 20fps
Video Compression	MJPEG, H.264, H.264 IntelliZip, H.265 and H.265 IntelliZip
Smart Codec	IntelliZip
Imaging Device	1/1.8" 8.3MP CMOS
Effective Pixels	3840(H) x 2160(V)
Min Illumination	Color: min 0.27 lux (1/30sec, 30IRE) BW: 0.027Lux
Focal Length	4.27mm fixed focal
Max. Aperture Ratio	F1.6
Angular Field of View	H: 107.97° V: 58.02° D: 126.87°
Focus Control	Fixed (peak focus at 5m)
Lens Type	Fixed
IR Viewable Length	15m (49.21ft) including smart IR control
Day & Night	Auto Low/ Auto Mid(Default)/ Auto High/ Manual/ Forced Color/ Force B&W
Backlight Compensation	Exposure Weighting: Top, Bottom, Left, Right, Full, Centre, Spot
Wide Dynamic Range	True WDR 120db Technologies
Digital Noise Reduction	2D&3DNR
Signal to Noise Ratio (SNR)	50db
Digital Image Stabilization	No
Motion Detection	3ea, polygonal zones
Privacy Masking	9ea, rectangular zones
Gain Control	Automatic & Manual (3dB increments)
White Balance	Automatic Wide, Automatic Normal (Default), Manual
Lens Distortion Correction	Support
Electronic Shutter Speed	Minimum 1/4s, Maximum 1/10,000s

Video Rotation	Corridor Mode, Mirror & Flip
Alarm I/O	No
Alarm Triggers	Motion detection, Tampering detection, Defocus detection
Alarm Events	Onboard recording, Snapshot, Notification via e-mail, FTP upload, CIFS upload
Micro USB	WiFi Installation Support via Illustra Mobile Toolkit
Pan/Tilt/Rotate	
Pan/Tilt/Rotate Range	0°~350° / 0°~67° / 0°~355°
Video Intelligence Analytics	
Standard	Tampering, Defocus/Motion Detection
Advanced	Linger, Exit, Direction, Abandoned/Removed Objects, Dwell, Enter, Object Detection, Perimeter, Queue, Crowd
Face	Yes
Network	
Ethernet	RJ-45(10/100/1000BASE-T)
Bitrate Control	H.264/H.265: CBR or VBR or CVBR
Streaming	Multiple streaming (up to 3 profiles)
Audio Compression	G.711 alaw and ulaw selectable G.711 8KHz
Protocol	TCP/IP, IPv4, IPv6, TCP, UDP, HTTP, FTP, DHCP, WS-Discovery, DNS, DDNS, RTP, RTCP, RTSP, TLS, Unicast, Multicast, NTP, ICMP, IGMP, SMTP, WS-Security, IEEE 802.1x, PEAP, EAP-TLS, EAPoL, SSH, HTTPS, SOAP, WSAddressing, CIFS, SNMP, UPNP, RTSP, LLDP
Security	TLS - RFC5246 v1.2, HTTPS (HTTP over TLS) - RFC2818, WS-Security, Certificate Management, Multi-Level Password Protection, IP Address/Filtering, HTTPS Encryption, One-Click Security Hardening, User Access Log, Validate Complex Credentials, Disabling Unused Protocols, IEEE/802.1x Including: PEAP EAP-TLS, EAPoL
Storage	Micro SD/SDHC/SDXC 1slot 512GB
Application Programming Interface	iAPI-3
ONVIF-Compliant	Profile S
Memory	1GB RAM, 512MB Flash
Environmental	
Operating Temperature/Humidity	-40°C ~ +50°C* (-40°F ~ +122°F) Up to 5 concurrent hours at 60°C / Less than 90% RH.
Storage Temperature/Humidity	-40°C ~ +55°C (-40°F ~ +131°F)/ Less than 90% RH
Environmental	IP66/ IP67
Vandal Resistance	IK10
Electrical	
Input Voltage	PoE 802.3af (802.3at Type 1)
Power Consumption	PoE: Max 8.1W
Mechanical/Regulatory	
Color/Material	White/Aluminum
Safety	UL62368-1; CAN/CSA-C22.2 No. 62368-1, BIS IS13252 Part 1:2010
Emissions	FCC Part 15 Class A; EN55032 Class A; AS/NZS CISPR 32 Class A; ICES-003/NMB-003 Class A
Immunity	EN50130-4
Environment	RoHS/WEEE, REACH
NDAA Compliant	Yes



3MP Outdoor Mini-Dome 3.2-10mm Varifocal

Product Number	TCCF303D13
	Illustra Flex Gen3 Outdoor Mini-Dome camera is designed to offer a high-image quality, and feature rich surveillance option for a wide range of applications. Also, the Compact Mini-Dome features built-in IR illuminators to produce clear images at an effective distance in a variety of low light conditions.
Resolution	2048x1536/ 1920x1080/ 1664x936/ 1280x720/ 1024x576/ 640x480/ 640x360/ 480x360/ 384x288
Dimensions	145 x 106.5mm (5.70 x 4.19 in)
Max Frame Rate	H.265/H.264: Max. 60fps MJPEG: Max. 20fps
Video Compression	MJPEG, H.264, H.264 IntelliZip, H.265 and H.265 IntelliZip
Smart Codec	IntelliZip
Imaging Device	1/2.8" 3.21MP CMOS
Effective Pixels	2065(H) x 1553(V)
Min Illumination	Color: min 0.05 lux (1/30sec, 30IRE) BW: 0.005Lux
Focal Length	3.2-10mm
Max. Aperture Ratio	F1.6(W) ~F2.9(T) H: 94.7°(W)~29.34°(T) V: 68.7°(W)~22°(T) D: 125.21°(W)~36.45°(T)
Angular Field of View	
Focus Control	Simple focus, (software controls: one-touch AF and manual control)
Lens Type	Motorized varifocal, P-Iris
IR Viewable Length	40m (131.23ft) Adaptive IR
Day & Night	Auto Low/ Auto Mid(Default)/ Auto High/ Manual/ Forced Color/ Force B&W
Backlight Compensation	Exposure Weighting: Top, Bottom, Left, Right, Full, Centre, Spot
Wide Dynamic Range	True WDR 140db Technologies
Digital Noise Reduction	2D&3DNR
Signal to Noise Ratio (SNR)	50db
Digital Image Stabilization	No
Motion Detection	3ea, polygonal zones
Privacy Masking	9ea, rectangular zones
Gain Control	Automatic & Manual (3dB increments)
White Balance	Automatic Wide, Automatic Normal (Default), Manual
Lens Distortion Correction	Support

Electronic Shutter Speed	Minimum 1/4s, Maximum 1/10,000s
Video Rotation	Corridor Mode, Mirror & Flip
Alarm I/O	Input 1ea (digit) / Output 1ea, IO Cable (IA-CBL-IO-F30) required
Alarm Triggers	Motion detection, Tampering detection, Defocus detection
Alarm Events	Alarm output, Onboard recording, Snapshot, Notification via e-mail, FTP upload, CIFS upload
Audio In (w/IO Cable)	Line in, IO Cable (IA-CBL-IO-F30) required
Audio Out (w/IO Cable)	Line out, IO Cable (IA-CBL-IO-F30) required
Micro USB	WiFi Installation Support via Illustra Mobile Toolkit
Pan/Tilt/Rotate	
Pan/Tilt/Rotate Range	0°~350° / 0°~67° / 0°~355°

Video Intelligence Analytics	
Standard	Tampering, Defocus/Motion Detection
Network	
Ethernet	RJ-45(10/100BASE-T)
Bitrate Control	H.264/H.265: CBR or VBR or CVBR
Streaming	Multiple streaming (up to 3 profiles)
Audio Compression	G.711 alaw and ulaw selectable G.711 8KHz
Protocol	TCP/IP, IPv4, IPv6, TCP, UDP, HTTP, FTP, DHCP, WS-Discovery, DNS, DDNS, RTP, RTCP, RTSP, TLS, Unicast, Multicast, NTP, ICMP, IGMP, SMTP, WS-Security, IEEE 802.1x, PEAP, EAP-TLS, EAPoL, SSH, HTTPS, SOAP, WSAddressing, CIFS, SNMP, UPNP, RTSP, LLDP
Security	TLS - RFC5246 v1.2, HTTPS (HTTP over TLS) - RFC2818, WS-Security, Certificate Management, Multi-Level Password Protection, IP Address/Filtering, HTTPS Encryption, One-Click Security Hardening, User Access Log, Validate Complex Credentials, Disabling Unused Protocols, IEEE/802.1x Including: PEAP EAP-TLS, EAPoL
Storage	Micro SD/SDHC/SDXC 1slot 512GB
Application Programming Interface	iAPI-3
ONVIF-Compliant	Profile S
Memory	512MB RAM, 512MB Flash

Environmental	
Operating Temperature/Humidity	-40°C ~ +50°C* (-40°F ~ +122°F) Up to 5 concurrent hours at 60°C / Less than 90% RH.
Storage Temperature/Humidity	-40°C ~ +55°C (-40°F ~ +131°F)/ Less than 90% RH
Environmental	IP66/ IP67
Vandal Resistance	IK10

Electrical	
Input Voltage	24 VAC (-20% ~ +30%, 47 ~ 63 Hz), PoE 802.3af (802.3at Type 1)
Power Consumption	24 VAC: Max 12.6W PoE: Max 12.3W

Mechanical/Regulatory	
Color/Material	White/Aluminum
Safety	UL62368-1; CAN/CSA-C22.2 No. 62368-1, BIS IS13252 Part 1:2010
Emissions	FCC Part 15 Class A; EN55032 Class A; AS/NZS CISPR 32 Class A; ICES-003/NMB-003 Class A
Immunity	EN50130-4
Environment	RoHS/WEEE, REACH
NDAA Compliant	Yes



8MP Outdoor Mini-Dome 4.17-9.48mm Varifocal

*Advanced analytics and face detection subject to future firmware release

Product Number	TCCF308D16
	Illustra Flex Gen3 Outdoor Mini-Dome camera is designed to offer a high-image quality, and feature rich surveillance option for a wide range of applications. Also, the Compact Mini-Dome features built-in IR illuminators to produce clear images at an effective distance in a variety of low light conditions.
Resolution	3840x2160/ 3264x1840/ 2688x1520/ 1920x1080/ 1664x936/ 1280x720/ 1024x576/ 960x544/ 816x464/ 640x360/ 480x272
Dimensions	145 x 106.5mm (5.70 x 4.19 in)
Max Frame Rate	H.265/H.264: Max. 60fps MJPEG: Max. 20fps
Video Compression	MJPEG, H.264, H.264 IntelliZip, H.265 and H.265 IntelliZip
Smart Codec	IntelliZip
Imaging Device	1/1.8" 8.3MP CMOS
Effective Pixels	3840(H) x 2160(V)
Min Illumination	Color: min 0.27 lux (1/30sec, 30IRE) BW: 0.027Lux
Focal Length	4.17-9.48mm
Max. Aperture Ratio	F1.9(W) ~F2.8(T) H: 111.66°(W)~ 46.69°(T) V: 62.53°(W)~26.36°(T) D: 131.91°(W)~53.21°(T)
Angular Field of View	
Focus Control	Simple focus, (software controls: one-touch AF and manual control)
Lens Type	Motorized varifocal, P-Iris
IR Viewable Length	40m (131.23ft) Adaptive IR
Day & Night	Auto Low/ Auto Mid(Default)/ Auto High/ Manual/ Forced Color/ Force B&W
Backlight Compensation	Exposure Weighting: Top, Bottom, Left, Right, Full, Centre, Spot
Wide Dynamic Range	True WDR 120db Technologies
Digital Noise Reduction	2D&3DNR
Signal to Noise Ratio (SNR)	50db
Digital Image Stabilization	No
Motion Detection	3ea, polygonal zones
Privacy Masking	9ea, rectangular zones
Gain Control	Automatic & Manual (3dB increments)
White Balance	Automatic Wide, Automatic Normal (Default), Manual

Lens Distortion Correction	Support
Electronic Shutter Speed	Minimum 1/4s, Maximum 1/10,000s
Video Rotation	Corridor Mode, Mirror & Flip
Alarm I/O	Input 1ea (digit) / Output 1ea, IO Cable (IA-CBL-IO-F30) required
Alarm Triggers	Motion detection, Tampering detection, Defocus detection
Pan/Tilt/Rotate	
Pan/Tilt/Rotate Range	0°~350° / 0°~67° / 0°~355°

Video Intelligence Analytics	
Standard	Tampering, Defocus/Motion Detection
Advanced	Linger, Exit, Direction, Abandoned/Removed Objects, Dwell, Enter, Object Detection, Perimeter, Queue, Crowd
Face Detection	Yes
Network	
Ethernet	RJ-45(10/100BASE-T)
Bitrate Control	H.264/H.265: CBR or VBR or CVBR
Streaming	Multiple streaming (up to 3 profiles)
Audio Compression	G.711 alaw and ulaw selectable G.711 8KHz
Protocol	TCP/IP, IPv4, IPv6, TCP, UDP, HTTP, FTP, DHCP, WS-Discovery, DNS, DDNS, RTP, RTCP, RTSP, TLS, Unicast, Multicast, NTP, ICMP, IGMP, SMTP, WS-Security, IEEE 802.1x, PEAP, EAP-TLS, EAPoL, SSH, HTTPS, SOAP, WSAddressing, CIFS, SNMP, UPNP, RTSP, LLDP
Security	TLS - RFC5246 v1.2, HTTPS (HTTP over TLS) - RFC2818, WS-Security, Certificate Management, Multi-Level Password Protection, IP Address/Filtering, HTTPS Encryption, One-Click Security Hardening, User Access Log, Validate Complex Credentials, Disabling Unused Protocols, IEEE/802.1x Including: PEAP EAP-TLS, EAPoL
Storage	Micro SD/SDHC/SDXC 1slot 512GB
Application Programming Interface	iAPI-3
ONVIF-Compliant	Profile S
Memory	512MB RAM, 512MB Flash

Environmental	
Operating Temperature/Humidity	-40°C ~ +50°C* (-40°F ~ +122°F) Up to 5 concurrent hours at 60°C / Less than 90% RH.
Storage Temperature/Humidity	-40°C ~ +55°C (-40°F ~ +131°F)/ Less than 90% RH
Environmental	IP66/ IP67
Vandal Resistance	IK10

Electrical	
Input Voltage	24 VAC (-20% ~ +30%, 47 ~ 63 Hz), PoE 802.3af (802.3at Type 1)
Power Consumption	24 VAC: Max 14.0W PoE: Max 12.95W

Mechanical/Regulatory	
Color/Material	White/Aluminum
Safety	UL62368-1; CAN/CSA-C22.2 No. 62368-1, BIS IS13252 Part 1:2010
Emissions	FCC Part 15 Class A; EN55032 Class A; AS/NZS CISPR 32 Class A; ICES-003/NMB-003 Class A
Immunity	EN50130-4
Environment	RoHS/WEEE, REACH
NDAA Compliant	Yes



3MP Outdoor Bullet 3.2-10mm Varifocal

Product Number	TCCF303B11
	Illustra Flex Gen3 Bullet camera has optimal image clarity with a tough exterior. Solid yet affordable, the camera is ideal for both interior and exterior applications that require a vandal and weather-resistant option. It comes complete with built-in IR illuminators for clear video images in extreme low light or zero illumination conditions providing crisp, clear video quality both day and night.
Resolution	2048x1536/ 1920x1080/ 1664x936/ 1280x720/ 1024x576/ 640x480/ 640x360/ 480x360/ 384x288
Dimensions	91 x 325mm (3.58 x 13.88 in)
Max Frame Rate	H.265/H.264: Max. 60fps MJPEG: Max. 20fps
Video Compression	MJPEG, H.264, H.264 IntelliZip, H.265 and H.265 IntelliZip
Smart Codec	IntelliZip
Imaging Device	1/2.8" 3.21MP CMOS
Effective Pixels	2065(H) x 1553(V)
Min Illumination	Color: min 0.05 lux (1/30sec, 30IRE) BW: 0.005Lux
Focal Length	3.2-10mm
Max. Aperture Ratio	F1.6(W) ~F2.9(T)
Angular Field of View	H: 94.7°(W)~29.34°(T) V: 68.7°(W)~22°(T) D: 125.21°(W)~36.45°(T)
Focus Control	Simple focus, (software controls: one-touch AF and manual control)
Lens Type	Motorized varifocal, P-Iris
IR Viewable Length	40m (131.23ft) Adaptive IR
Day & Night	Auto Low/ Auto Mid(Default)/ Auto High/ Manual/ Forced Color/ Force B&W
Backlight Compensation	Exposure Weighting: Top, Bottom, Left, Right, Full, Centre, Spot
Wide Dynamic Range	True WDR 140db Technologies
Digital Noise Reduction	2D&3DNR
Signal to Noise Ratio (SNR)	50db
Digital Image Stabilization	No
Motion Detection	3ea, polygonal zones
Privacy Masking	9ea, rectangular zones
Gain Control	Automatic & Manual (3dB increments)

White Balance	Automatic Wide, Automatic Normal (Default), Manual
Lens Distortion Correction	Support
Electronic Shutter Speed	Minimum 1/4s, Maximum 1/10,000s
Video Rotation	Corridor Mode, Mirror & Flip
Alarm I/O	Input 1ea (digit) / Output 1ea, IO Cable (IA-CBL-IO-F30) required
Alarm Triggers	Motion detection, Tampering detection, Alarm Input, Defocus detection
Alarm Events	Alarm output, Onboard recording, Snapshot, Notification via e-mail, FTP upload, CIFS upload
Audio In	Line in, IO Cable (IA-CBL-IO-F30) required
Audio Out	Line out, IO Cable (IA-CBL-IO-F30) required
Micro USB	WiFi Installation Support via Illustra Mobile Toolkit
Video Intelligence Analytics	
Standard	Tampering, Defocus/Motion Detection
Network	
Ethernet	RJ-45(10/100BASE-T)
Bitrate Control	H.264/H.265: CBR or VBR or CVBR
Streaming	Multiple streaming (up to 3 profiles)
Audio Compression	G.711 alaw and ulaw selectable G.711 8KHz
Protocol	TCP/IP, IPv4, IPv6, TCP, UDP, HTTP, FTP, DHCP, WS-Discovery, DNS, DDNS, RTP, RTCP, RTSP, TLS, Unicast, Multicast, NTP, ICMP, IGMP, SMTP, WS-Security, IEEE 802.1x, PEAP, EAP-TLS, EAPoL, SSH, HTTPS, SOAP, WSAddressing, CIFS, SNMP, UPNP, RTSP, LLDP
Security	TLS - RFC5246 v1.2, HTTPS (HTTP over TLS) - RFC2818, WS-Security, Certificate Management, Multi-Level Password Protection, IP Address/Filtering, HTTPS Encryption, One-Click Security Hardening, User Access Log, Validate Complex Credentials, Disabling Unused Protocols, IEEE/802.1x Including: PEAP EAP-TLS, EAPoL
Storage	Micro SD/SDHC/SDXC 1slot 512GB
Application Programming Interface	iAPI-3
ONVIF-Compliant	Profile S
Memory	512MB RAM, 512MB Flash
Environmental	
Operating Temperature/Humidity	-40°C ~ +50°C* (-40°F ~ +122°F) Up to 5 concurrent hours at 60°C / Less than 90% RH.
Storage Temperature/Humidity	-40°C ~ +55°C (-40°F ~ +131°F)/ Less than 90% RH
Environmental	IP66/ IP67
Vandal Resistance	IK10
Electrical	
Input Voltage	24 VAC (-20% ~ +30%, 47 ~ 63 Hz), PoE 802.3af (802.3at Type 1)
Power Consumption	24 VAC: Max 14.0W PoE: Max 12.95W
Mechanical/Regulatory	
Color/Material	White/Aluminum
Safety	UL62368-1; CAN/CSA-C22.2 No. 62368-1, BIS IS13252 Part 1:2010
Emissions	FCC Part 15 Class A; EN55032 Class A; AS/NZS CISPR 32 Class A; ICES-003/NMB-003 Class A
Immunity	EN50130-4
Environment	RoHS/WEEE, REACH
NDAA Compliant	Yes



8MP Outdoor Bullet 4.17-9.48mm Varifocal

**Advanced analytics and face detection subject to future firmware release*

Product Number	TCCF308B14
	Illustra Flex Gen3 Bullet camera has optimal image clarity with a tough exterior. Solid yet affordable, the camera is ideal for both interior and exterior applications that require a vandal and weather-resistant option. It comes complete with built-in IR illuminators for clear video images in extreme low light or zero illumination conditions providing crisp, clear video quality both day and night.
Resolution	3840x2160/ 3264x1840/ 2688x1520/ 1920x1080/ 1664x936/ 1280x720/ 1024x576/ 960x544/ 816x464/ 640x360/ 480x272
Dimensions	91 x 325mm (3.58 x 13.88 in)
Max Frame Rate	H.265/H.264: Max. 60fps MJPEG: Max. 20fps
Video Compression	MJPEG, H.264, H.264 IntelliZip, H.265 and H.265 IntelliZip
Smart Codec	IntelliZip
Imaging Device	1/1.8" 8.3MP CMOS
Effective Pixels	3840(H) x 2160(V)
Min Illumination	Color: min 0.27 lux (1/30sec, 30IRE) BW: 0.027Lux
Focal Length	4.17-9.48mm
Max. Aperture Ratio	F1.9(W) ~F2.8(T)
Angular Field of View	H: 111.66°(W)~ 46.69°(T) V: 62.53°(W)~26.36°(T) D: 131.91°(W)~53.21°(T)
Focus Control	Simple focus, (software controls: one-touch AF and manual control)
Lens Type	Motorized varifocal, P-Iris
IR Viewable Length	40m (131.23ft) Adaptive IR
Day & Night	Auto Low/ Auto Mid(Default)/ Auto High/ Manual/ Forced Color/ Force B&W
Backlight Compensation	Exposure Weighting: Top, Bottom, Left, Right, Full, Centre, Spot
Wide Dynamic Range	True WDR 120db Technologies
Digital Noise Reduction	2D&3DNR
Signal to Noise Ratio (SNR)	50db
Digital Image Stabilization	No
Motion Detection	3ea, polygonal zones
Privacy Masking	9ea, rectangular zones
Gain Control	Automatic & Manual (3dB increments)
White Balance	Automatic Wide, Automatic Normal (Default), Manual

Lens Distortion Correction	Support
Electronic Shutter Speed	Minimum 1/4s, Maximum 1/10,000s
Video Rotation	Corridor Mode, Mirror & Flip
Alarm I/O	Input 1ea (digit) / Output 1ea, IO Cable (IA-CBL-IO-F30) required
Alarm Triggers	Motion detection, Tampering detection, Alarm Input, Defocus detection
Video Intelligence Analytics	
Standard	Tampering, Defocus/Motion Detection
Advanced	Linger, Exit, Direction, Abandoned/Removed Objects, Dwell, Enter, Object Detection, Perimeter, Queue, Crowd
Face Detection	Yes
Network	
Ethernet	RJ-45(10/100/1000BASE-T)
Bitrate Control	H.264/H.265: CBR or VBR or CVBR
Streaming	Multiple streaming (up to 3 profiles)
Audio Compression	G.711 alaw and ulaw selectable G.711 8KHz
Protocol	TCP/IP, IPv4, IPv6, TCP, UDP, HTTP, FTP, DHCP, WS-Discovery, DNS, DDNS, RTP, RTCP, RTSP, TLS, Unicast, Multicast, NTP, ICMP, IGMP, SMTP, WS-Security, IEEE 802.1x, PEAP, EAP-TLS, EAPoL, SSH, HTTPS, SOAP, WSAddressing, CIFS, SNMP, UPNP, RTSP, LLDP
Security	TLS - RFC5246 v1.2, HTTPS (HTTP over TLS) - RFC2818, WS-Security, Certificate Management, Multi-Level Password Protection, IP Address/Filtering, HTTPS Encryption, One-Click Security Hardening, User Access Log, Validate Complex Credentials, Disabling Unused Protocols, IEEE/802.1x Including: PEAP EAP-TLS, EAPoL
Storage	Micro SD/SDHC/SDXC 1slot 512GB
Application Programming Interface	iAPI-3
ONVIF-Compliant	Profile S
Memory	1GB RAM, 512MB Flash
Environmental	
Operating Temperature/Humidity	-40°C ~ +50°C* (-40°F ~ +122°F) Up to 5 concurrent hours at 60°C / Less than 90% RH.
Storage Temperature/Humidity	-40°C ~ +55°C (-40°F ~ +131°F)/ Less than 90% RH
Environmental	IP66/ IP67
Vandal Resistance	IK10
Electrical	
Input Voltage	24 VAC (-20% ~ +30%, 47 ~ 63 Hz), PoE 802.3af (802.3at Type 1)
Power Consumption	24 VAC: Max 15.0W PoE: Max 12.95W
Mechanical/Regulatory	
Color/Material	White/Aluminum
Safety	UL62368-1; CAN/CSA-C22.2 No. 62368-1, BIS IS13252 Part 1:2010
Emissions	FCC Part 15 Class A; EN55032 Class A; AS/NZS CISPR 32 Class A; ICES-003/NMB-003 Class A
Immunity	EN50130-4
Environment	RoHS/WEEE, REACH
NDAA Compliant	Yes



2MP Indoor/Outdoor Dome 2.8mm

Product Number	TCCE502D07
	Essentials Mini-Dome camera provides up to 1080p resolution with IR illumination to manage low light scenes. The affordable cameras capture video in a variety of lighting conditions with features such as True Day/ Night and Wide Dynamic Range. Supports both H.265 and H.264 codecs and one-touch auto-focus. Rated IP67. The Essential Mini-Dome also features corridor mode which allows cameras to maximize video surveillance in narrow vertical situations.
Resolution & Aspect Ratio	1920 x 1080 (1080p) 16:9
Max Frame Rate	30fps
Video Compression	H.264, H.265, MJPEG
Video Streams	Dual Stream with both streams at a maximum of 1080p @ 30ips
Imager	1/2.8", Sony CMOS
S/N Ratio	More than 50dB
Image Orientation Settings	Off, flip, mirror, both
Lens Type	Fixed 2.8mm focal length
Focus Control	Factory Focused
Aperture	F/1.8
Focal Length	2.8mm
Field of View (H/V)	
Wide Angle	110°/60°
Telephoto	
Shutter Speed	1/2~1/10,000s (Manual:default NTSC=1/30s, PAL=1/25s) / (Shutter-priority:default NTSC=1/60s, PAL=1/50s)
Minimum Illumination	
Color	0.08 Lux (50IRE) 0.03 Lux (30IRE)
B/W	0.05 Lux (50IRE) 0.02 Lux (30IRE)
With IR	0.0 Lux
IR LEDs	Yes
IR Distance	25m
Noise Reduction	3D
Wide Dynamic Range	True WDR 120dB
Day/Night	True Day/Night with ICR
ONVIF-Compliant	Profile S/G/Q
Motion Detection Zones	3
Blur Detection Zones	Yes
Privacy Zones	8
Image Rotation	Corridor

Analog Video Output	No
Audio	No
Simultaneous Users	5
Network	
Ethernet Interface	IEEE 802.3, 10/100 Base-T/TX, auto sensing, 1 x RJ45
Supported Protocols	TCP/IP, IPv4, IPv6, TCP, UDP, HTTP, FTP, DHCP, WS-Discovery, DNS, DDNS, RTP, TLS, Unicast, NTP, SMTP, WSSecurity, IEEE 802.1x, PEAP, SSH, HTTPS, SSL, SOAP, WSAddressing, SNMP, UPnP, RTSP, LLDP
Configuration Management	
Web Browser	IE 11 or above, Firefox, Chrome, Safari, Microsoft Edge
Security	IEEE 802.1X, HTTPS, Digest authentication, IP address filtering
Onboard Storage	
Card Support	SDXC up to 256GB
Pre-Alarm Recording	1-10 sec
Recording Format	AVI
Playback	Via Web Browser
Recording Trigger	Blur Detection, Motion Detection
VideoEdge TrickleStor	No
Electrical	
Power Input	DC12V; PoE IEEE 802.3af Class 3
Maximum Power Draw	7.3W
Physical	
Dimensions (WxH)	Ø110mm x 82mm (Ø4.33in x 3.29in)
Weight	0.53kg (1.16 lbs)
Housing Color	White, RAL 9003
Operating Temperature	Cold Start Temperature: -20°C to 60°C (-4°F to 140°F) Operating Temperature: -30°C to 60°C (-22°F to 140°F)
Storage Temperature	-40°C to 60°C (-40°F to 140°F)
Humidity	Desiccant pack provided
Vandal Resistant	IK10
Outdoor Rating	IP67
Regulatory	
Safety	UL 62368-1, IEC 62368-1, EN 62338-1, IEC 62471
Emissions	FCC CFR 47, Part 15 Class A, EN 55032
Immunity	EN 50130-4, EN 61000-3-2, EN 61000-3-3
Environment	RoHS, Reach, WEEE
NDAA Compliant	Yes



2MP Indoor/Outdoor Bullet 2.8mm

Product Number	TCCE502B08
	Essentials Bullet camera provides up to 1080p resolution with IR illumination to manage low light scenes. The affordable cameras capture video in a variety of lighting conditions with features such as True Day/ Night and Wide Dynamic Range. Supports both H.265 and H.264 codecs and one-touch auto-focus. Rated IP67. The Essential Mini-Dome also features corridor mode which allows cameras to maximize video surveillance in narrow vertical situations.
Resolution & Aspect Ratio	1920 x 1080 (1080p) 16:9
Max Frame Rate	30fps
Video Compression	H.264, H.265, MJPEG
Video Streams	Dual Stream with both streams at a maximum of 1080p @ 30ips
Imager	1/2.8", Sony CMOS
S/N Ratio	More than 50dB
Image Orientation Settings	Off, flip, mirror, both
Lens Type	Fixed 2.8mm focal length
Focus Control	Factory Focused
Aperture	F/1.8
Focal Length	2.8mm
Field of View (H/V)	
Wide Angle	110°/60°
Telephoto	
Shutter Speed	1/2~1/10,000s (Manual:default NTSC=1/30s, PAL=1/25s) / (Shutter-priority:default NTSC=1/60s, PAL=1/50s)
Minimum Illumination	
Color	0.08 Lux (50IRE) 0.03 Lux (30IRE)
B/W	0.05 Lux (50IRE) 0.02 Lux (30IRE)
With IR	0.0 Lux
IR LEDs	Yes
IR Distance	30m
Noise Reduction	3D
Wide Dynamic Range	True WDR 120dB
Day/Night	True Day/Night with ICR
ONVIF-Compliant	Profile S/G/Q
Motion Detection Zones	3
Blur Detection Zones	Yes
Privacy Zones	8
Image Rotation	Corridor
Analog Video Output	No

Audio	No
Simultaneous Users	5
Network	
Ethernet Interface	IEEE 802.3, 10/100 Base-T/TX, auto sensing, 1 x RJ45
Supported Protocols	TCP/IP, IPv4, IPv6, TCP, UDP, HTTP, FTP, DHCP, WS-Discovery, DNS, DDNS, RTP, TLS, Unicast, NTP, SMTP, WSSecurity, IEEE 802.1x, PEAP, SSH, HTTPS, SSL, SOAP, WSAddressing, SNMP, UPnP, RTSP, LLDP
Configuration Management	
Web Browser	IE 11 or above, Firefox, Chrome, Safari, Microsoft Edge
Security	Enhanced Security
Onboard Storage	
Card Support	SDXC up to 256GB
Pre-Alarm Recording	1-10 sec
Recording Format	AVI
Recording Trigger	Blur Detection, Motion Detection
VideoEdge TrickleStor	No
Electrical	
Power Input	DC12V; PoE IEEE 802.3af Class 3
Maximum Power Draw	8.3W
Physical	
Dimensions (WxH)	77mm x 84mm x 147mm (3.03in x 3.3in x 5.78in)
Weight	0.49kg (1.08 lbs)
Housing Color	White, RAL 9003
Operating Temperature	Cold Start Temperature: -20°C to 60°C (-4°F to 140°F) Operating Temperature: -30°C to 60°C (-22°F to 140°F)
Storage Temperature	-40°C to 60°C (-40°F to 140°F)
Humidity	10% to 90% (non-condensing)
Vandal Resistant	IK07
Outdoor Rating	IP67
Regulatory	
Safety	UL 62368-1, IEC 62368-1, EN 62338-1, IEC 62471
Emissions	FCC CFR 47, Part 15 Class A, EN 55032
Immunity	EN 50130-4, EN 61000-3-2, EN 61000-3-3
Environment	RoHS, Reach, WEEE
NDAA Compliant	Yes



2MP Indoor/Outdoor Dome 2.7-13.5mm Varifocal

Product Number	TCCE502D09
	The Essentials Varifocal Mini-Dome camera offers resolutions up to 1080p with IR illumination to manage low light scenes. Features True Day/Night and Wide Dynamic Range. Supports both H.265 and H.264 codecs resulting in reduced bandwidth and storage requirements. Supports one-touch auto-focus and motorized zoom. Rated IP67 for an additional degree of environmental protection. Features corridor mode which maximizes video surveillance in narrow vertical situations. Ideal for hallways, retail aisles, and tunnels this mode creates a unique high quality, vertical video.
Resolution & Aspect Ratio	1920 x 1080 (1080p) 16:9
Max Frame Rate	30fps
Video Compression	H.264, H.265, MJPEG
Video Streams	Dual Stream with both streams at a maximum of 1080p @ 30ips
Imager	1/2.8" Sony CMOS
S/N Ratio	More than 50dB
Image Orientation Settings	Off, flip, mirror, both
Lens Type	f2.7mm~13.5mm, Motorised Varifocal
Focus Control	Remote On-Push Focus and Remote Manual Adjustment
Aperture	F/1.7 (W) ~ F/2.8 (T)
Field of View (H/V)	
Wide Angle	100°/53°
Telephoto	34°/20°
Shutter Speed	1/2~1/10,000s (Manual:default NTSC=1/30s, PAL=1/25s) / (Shutter-priority:default NTSC=1/60s, PAL=1/50s)
Minimum Illumination	
Color	0.08 Lux (50IRE) 0.03 Lux (30IRE)
B/W	0.05 Lux (50IRE) 0.02 Lux (30IRE)
With IR	0.0 Lux
IR LEDs	Yes
IR Distance	30m
Noise Reduction	3D
Wide Dynamic Range	True WDR 120dB
Day/Night	True Day/Night with ICR
ONVIF-Compliant	Profile S/G/Q
Motion Detection Zones	3
Blur Detection Zones	Yes
Privacy Zones	8
Image Rotation	Corridor

Analog Video Output	No
Audio	No
Simultaneous Users	5
Network	
Ethernet Interface	IEEE 802.3, 10/100 Base-T/TX, auto sensing, 1 x RJ45
Supported Protocols	TCP/IP, IPv4, IPv6, TCP, UDP, HTTP, FTP, DHCP, WS-Discovery, DNS, DDNS, RTP, TLS, Unicast, NTP, SMTP, WSSecurity, IEEE 802.1x, PEAP, SSH, HTTPS, SSL, SOAP, WSAddressing, SNMP, UPnP, RTSP, LLDP
Configuration Management	
Web Browser	IE 11 or above, Firefox, Chrome, Safari, Microsoft Edge
Security	IEEE 802.1X, HTTPS, Digest authentication, IP address filtering
Onboard Storage	
Card Support	SDXC up to 256GB
Pre-Alarm Recording	1-10 sec
Recording Format	AVI
Playback	Via Web Browser
Recording Trigger	Blur Detection, Motion Detection
VideoEdge TrickleStor	No
Electrical	
Power Input	DC12V; PoE IEEE 802.3af Class 3
Maximum Power Draw	9.9W
Physical	
Dimensions (WxH)	Ø124mm x 113mm (Ø4.88in x 4.45in)
Weight	0.65kg (1.43 lbs)
Housing Color	White, RAL 9003
Operating Temperature	Cold Start Temperature: -20°C to 60°C (-4°F to 140°F) Operating Temperature: -30°C to 60°C (-22°F to 140°F)
Storage Temperature	-40°C to 55°C (-40°F to 131°F)
Humidity	Desiccant pack provided
Vandal Resistant	IK10
Outdoor Rating	IP67
Regulatory	
Safety	UL 62368-1, IEC 62368-1, EN 62338-1, IEC 62471
Emissions	FCC CFR 47, Part 15 Class A, EN 55032
Immunity	EN 50130-4, EN 61000-3-2, EN 61000-3-3
Environment	RoHS, Reach, WEEE
NDAA Compliant	Yes



2MP Indoor/Outdoor Bullet 2.7-13.5mm Varifocal

Product Number	TCCE502B10
	The Essentials Varifocal Bullet camera offers resolutions up to 1080p with IR illumination to manage low light scenes. Features True Day/Night and Wide Dynamic Range. Supports both H.265 and H.264 codecs resulting in reduced bandwidth and storage requirements. Supports one-touch auto-focus and motorized zoom. Rated IP67 for an additional degree of environmental protection. Features corridor mode which maximizes video surveillance in narrow vertical situations. Ideal for hallways, retail aisles, and tunnels this mode creates a unique high quality, vertical video.
Resolution & Aspect Ratio	1920 x 1080 (1080p) 16:9
Max Frame Rate	30fps
Video Compression	H.264, H.265, MJPEG
Video Streams	Dual Stream with both streams at a maximum of 1080p @ 30ips
Imager	1/2.8" Sony CMOS
S/N Ratio	More than 50dB
Image Orientation Settings	Off, flip, mirror, both
Lens Type	f2.7mm~13.5mm
Focus Control	Remote On-Push Focus and Remote Manual Adjustment
Aperture	F1.4~2.8
Focal Length	2.7 - 13.5mm
Field of View (H/V)	
Wide Angle	100°/53°
Telephoto	34°/20°
Shutter Speed	1/2~1/10,000s (Manual:default NTSC=1/30s, PAL=1/25s) / (Shutter-priority:default NTSC=1/60s, PAL=1/50s)
Minimum Illumination	
Color	0.08 Lux (50IRE) 0.03 Lux (30IRE)
B/W	0.05 Lux (50IRE) 0.02 Lux (30IRE)
With IR	0.0 Lux
IR LEDs	Yes
IR Distance	30m
Noise Reduction	3D
Wide Dynamic Range	True WDR 120dB
Day/Night	True Day/Night with ICR
ONVIF-Compliant	Profile S/G/Q
Motion Detection Zones	3
Blur Detection Zones	Yes
Privacy Zones	8

Image Rotation	Corridor
Analog Video Output	No
Audio	No
Simultaneous Users	5
Network	
Ethernet Interface	IEEE 802.3, 10/100 Base-T/TX, auto sensing, 1 x RJ45
Supported Protocols	TCP/IP, IPv4, IPv6, TCP, UDP, HTTP, FTP, DHCP, WS-Discovery, DNS, DDNS, RTP, TLS, Unicast, NTP, SMTP, WSSecurity, IEEE 802.1x, PEAP, SSH, HTTPS, SSL, SOAP, WSAddressing, SNMP, UPnP, RTSP, LLDP
Configuration Management	
Web Browser	IE 11 or above, Firefox, Chrome, Safari, Microsoft Edge
Security	Enhanced Security
Onboard Storage	
Card Support	SDXC up to 256GB
Pre-Alarm Recording	1-10 sec
Recording Format	AVI
Recording Trigger	Blur Detection, Motion Detection
VideoEdge TrickleStor	No
Electrical	
Power Input	DC12V; PoE IEEE 802.3af Class 3
Maximum Power Draw	9.9W
Physical	
Dimensions (WxH)	77mm x 84mm x 176mm (3.03in x 3.3in x 6.92in)
Weight	0.58kg (1.28 lbs)
Housing Color	White, RAL 9003
Operating Temperature	Cold Start Temperature: -20°C to 60°C (-4°F to 140°F) Operating Temperature: -30°C to 60°C (-22°F to 140°F)
Storage Temperature	-40°C to 60°C (-40°F to 140°F)
Humidity	10% to 90% (non-condensing)
Vandal Resistant	IK07
Outdoor Rating	IP67
Regulatory	
Safety	UL 62368-1, IEC 62368-1, EN 62338-1, IEC 62471
Emissions	FCC CFR 47, Part 15 Class A, EN 55032
Immunity	EN 50130-4, EN 61000-3-2, EN 61000-3-3
Environment	RoHS, Reach, WEEE



2MP Indoor/Outdoor PTZ 30x Optical Zoom

Product Number	TCCFS02P05
	The ability to capture high quality images is significantly enhanced by adaptive IR illumination which adjusts the intensity of the IR in line with the operator controlled zoom setting of the camera. The IR illumination built into the camera, enables it to capture high clear images in night time conditions at a distance of up to 150 meters. Packaged in a bubble-free, IP66 environmentally sealed and IK10 vandal-resistant housing, instead of a transparent dome cover usually fitted to PTZ cameras. This negates the potential problem of IR diffused reflection and maximizes image quality, regardless of the camera tilt angle. It also features true Day/Night functionality and Wide Dynamic Range (WDR).
Resolution & Aspect Ratio	1920x1080 (1080p) 16:9, 1600x900 (HD+) 16:9, 1280x720 (720p) 16:9, 1024x576 (PAL+) 16:9, 960x540 (qHD) 16:9, 800x450 16:9, 640x360 (nHD) 16:9, 480x270 16:9, 320x180 16:9, 160x90 16:9
Max Frame Rate	60ips @ 2MP
Video Compression	H.264 / H.264+ IntelliZip / H.265 / MJPEG
Video Streams	Triple Streaming with a Maximum of 5 Concurrent Shared Streams
Imager	Progress Scan RGB CMOS 1/3"
Image Orientation Settings	Auto Flip
Lens Type	IR Optical Corrective (Flex IR PTZ models only), Motorized Varifocal
Focus Control	Motorized, Auto Focus
Aperture	F/1.6(W) - F/4.7(T)
Focal Length	4.3 - 129mm
Field of View (H/V)	
Wide Angle	65°/38°
Telephoto	2.4°/1.4°
Shutter Speed	1/30(25) - 1/30,000 sec
Minimum Illumination	
Color	0.2 Lux at 1/30s; 0.03 Lux at 1/4s
B/W	0.001 Lux at 1/4s
With IR	0.0 Lux
IR Distance	Indoor Model 80ft (25m), Outdoor Model 500ft (150m)
Noise Reduction	Digital Noise Reduction 2D & 3D
Wide Dynamic Range	Dual Exposure, True WDR 93 dB Technologies
Day/Night	True Day/Night with ICR
ONVIF-Compliant	Profile S
Motion Detection Zones	1
Blur Detection Zones	1
Privacy Zones	8

Analog Video Output	NTSC/PAL Composite Video
Audio	Bi-Directional 1/1
Simultaneous Users	10
Network	
Ethernet Interface	IEEE 802.3, 10/100 Base-T Ethernet, Female RJ45, Auto-Negotiation
Supported Protocols	IE9 and above, Firefox, Chrome, Safar
Configuration Management	
Web Browser	IE9 and above, Firefox, Chrome, Safar
Security	One-Click Security Hardening, User Access Log, Validate Complex Credentials, Disabling Unused Protocols, IEEE 802.1x including: PEAP, EAP-TLS, EAPoL
Onboard Storage	
Card Support	SDXC up to 512GB
Pre-Alarm Recording	10 seconds
Recording Format	AVI
Playback	Via Web Browser
Recording Trigger	Alarm Input, Motion Detection, Blur Detection, Network Loss, Temperature
VideoEdge TrickleStor	Yes
Electrical	
Power Input	PoE+ 802.3at Class 4, 24VAC UPoE 802.3bt Class 6, 24VAC
Maximum Power Draw	25W, 51W
Physical	
Dimensions (WxH)	Ø 8.3in (212mm) Height: 13.56in (344mm)
Weight	14.9lbs (5.9kg)
Housing Color	Signal White Pantone RAL 9003
Operating Temperature	-4°F to 122°F (-20°C to 50°C)
Storage Temperature	-40°F to 140°F (-40°C to 60°C)
Humidity	Up to 90% Non-Condensing
Vandal Resistant	IK10
Outdoor Rating	IP66
Regulatory	
Safety	UL 60950-1; CAN/CSA-C22.2 No. 60950-1; EN 60950-1
Emissions	FCC Part 15 Class A; EN55032 Class A; AS/NZS CISPR 32 Class A; ICES-003/NMB-003 Class A
Immunity	EN55024; EN50130-4
Environment	RoHS; WEEE



No Network, No Problem

VBOX – Portable, plug and play video surveillance that works over a cellular network

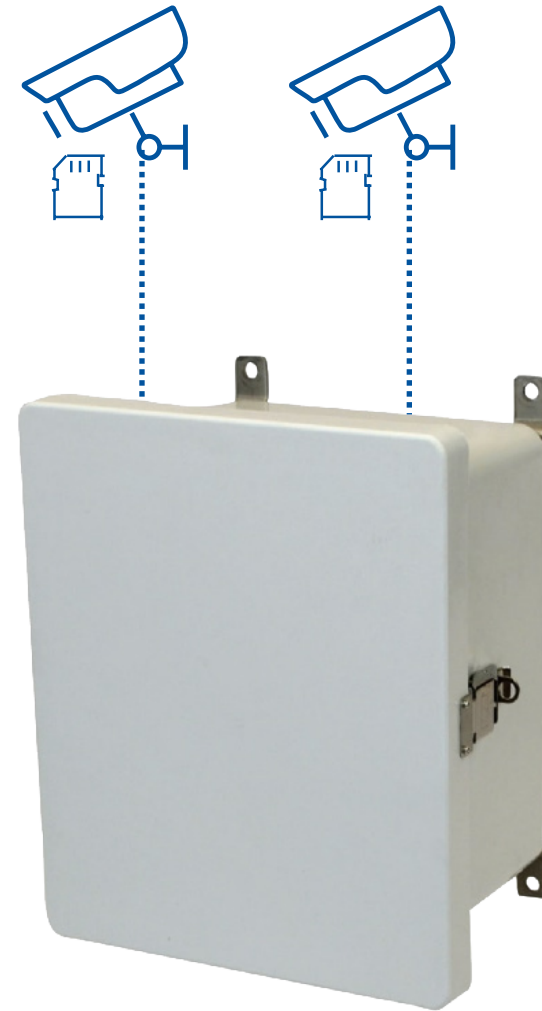
VBOX is the perfect surveillance solution for remote gates, construction sites, remote industrial operations, parking lots, parks, and temporary structures such as seasonal event venues. With a built-in, 4G cellular router, simply plug VBOX into a standard power outlet, connect cameras, and unlock access to powerful video surveillance tools.

How it works

Plug VBOX into any standard power outlet, insert your own sim card, connect cameras, and start your surveillance! Each VBOX allows you to connect two Cloudvue cloud cameras. Scale your surveillance network and add an unlimited number of VBOX devices and cameras.

Product Number	TCGVBOX400
Enclosures Protection Rating	IP66, NEMA 4X
Protective Enclosure	Fiberglass Weatherproof Enclosure, Corrosion resistant fiberglass reinforced polyester (FRP), Stainless steel continuous hinge and lockable quick release latches
Flame Rating	UL94-5V
Dimensions	Height – 10" (25.4cm), Width – 8" (20.3cm), Depth 6" (15.3cm)
Mount Kit Options	Pole Mount / Flange
Temperature Rating	-20°C to 60°C
Wireless Support	Industrial Grade LTE
Network	PTCRB (US) and GCF (global)
Network Support	North America, Europe, Africa, Middle East, and Asia Pacific, Certified AT&T, Sprint, Verizon
Camera Power Supply	Integrated Industrial PoE
Supported Cameras	Support for up to 2 Illustra Cloud Cameras
VBOX Power Supply	AC Input – 120VAC

Connect up to two Cloudvue cameras to each VBOX



Plug into any standard wall outlet



Uses 3G, 4G, 5G cellular networks



See your entire surveillance network on one screen

WD Purple™ HDD and MicroSD™

Cloudvue cameras and gateways use **Western Digital.**



- Optimized for 24/7 continuous operation of mainstream surveillance recorders
- AllFrame™ Technology helps reduce frame loss, improves overall playback, and increases the number of hard drive bays supported within an NVR
- Endurance is key. Fine-tuned specifically for surveillance cameras
- Endure temperatures from -25C to 85C to help capture uninterrupted surveillance footage



WD Purple™ Pro

Cloudvue cameras and gateways use **Western Digital.**



- Designed for high-end AI-enabled recorders, video analytics appliances, deep learning servers, and cloud solutions that can benefit from high-capacity storage
- Features include reliable operation in advanced high-performance smart video solutions with an MTBF of up to 2.5 million hours (12TB, 14TB and 18TB)
- Supports multiple cameras, multiple streams with drives optimized to support up to 64 HD single stream cameras, and can support many of the latest smart cameras that transmit multiple streams.

Make Your Smart Video Smarter

Pro Performance for Advanced Analytics



WD Purple™ Pro
3.5" Surveillance HDD

HARD DISK DRIVE



Western Digital.

Access Control

Control access to doors, gates or anything with a lock, across an entire organization

Cloudvue works with or without controllers and makes central management of access control more affordable, more secure, and available in locations where it was once impossible.

- **More Affordable** Cloudvue moves expensive hardware and door controllers to the cloud, so even a small business with just a couple doors can afford remote access control.
- **More Secure** Remove the security risk of lost or stolen key cards, fobs and physical keys. Securely, grant and revoke access. Set schedules to assign when and where people can unlock doors. Keep a searchable record that details when people access your buildings and properties.
- **More Scalable** Cloudvue access control can work in places without traditional network access such as remote gates, trailers, worksites, or sub stations. By leveraging the cloud, Bluetooth and mobile technology, people can simply use an App on their mobile device to unlock doors.
- **More Options** Leverage existing investments and upgrade overtime. Cloudvue supports legacy key cards and fobs and offers on-network access control solutions.



Permissions are centrally managed.

With video surveillance and access control managed together, Cloudvue keeps a linked-record of the credentials used to unlock a door along with the surveillance footage of when it happened.

Keys and cards are optional. Simply use an App to gain access.

Cloud Access Control opens more than doors

Cloud access control technology can help you manage a lot more than just access to buildings. With cloud-enabled access control solutions you can easily restrict personnel access to all sensitive areas of your business including spaces, products and equipment.



Medicine cabinets at hospitals



Gun storage doors at sporting goods stores



Luxury goods display units in shops



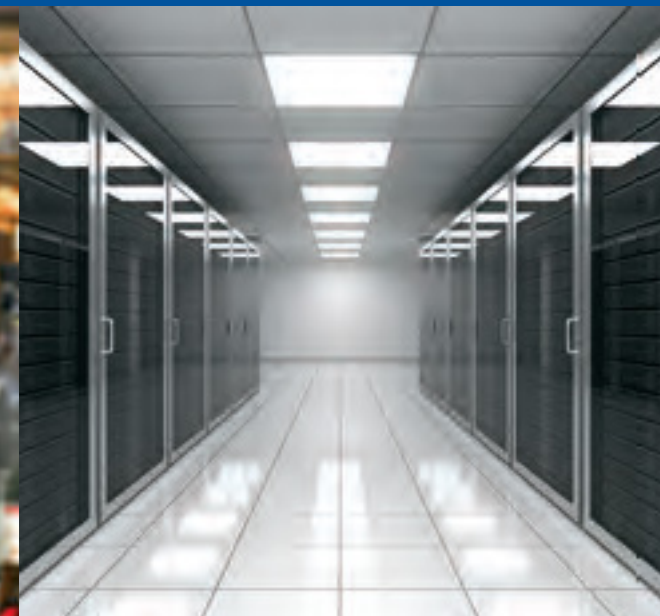
Cabinets with classified documents



Pharmacy doors at assisted living facilities



Alcohol, tobacco and cigarette cabinets at supermarkets



Server cabinets at data centers



Safe boxes/closets

ioSmart Mobile Credentials

Simple and Cost Effective Cloud Based Mobile Access Control - No Panels or Network Connection Required

Take advantage of the convenience and cost effectiveness of cloud powered access control with the new ioSmart mobile credentials solutions. Manage access any time and unlock doors from anywhere using the Cloudvue mobile app. View live door activity and surveillance video from any access to your buildings. Quickly and securely assign and revoke credentials which are immediately sent directly to the user's smartphone. Integrated two-factor authentication insures the security of your valuable premises.

ioSmart mobile technology for simplified access control

Allow personnel to conveniently access facilities using their smartphones with securely issued mobile credentials or smart keys.

Eliminate cost and reduce security risk of legacy cards, fobs, tags and physical key management.



Easily issue and revoke mobile credentials and smart keys to remote personnel securely and on-demand



ioSmart Mobile Smart Keys
For panel-less managed access to offline doors, gates, or other powered lock controlled openings. No panel or local network required.

ioSmart Mobile Credentials
For panel-based system installations needing to compliment or replace physical card access strategies.

ioSmart multi-technology readers for access control



All in one designs with increased security and convenience

- Bluetooth mobile credentials and smart keys.
- Proximity and contactless smart cards.



Simple and Cost Effective Cloud Based Mobile Access Control - No Door Controllers or Network Connection Required

	Mullion			Single-Gang		
Model Number	KT-MUL-MT-KP	KT-MUL-MT	KT-MUL-SC	KT-SG-MT-KP	KT-SG-MT	KT-SG-SC
RF Technologies	13.56 MHz 125 kHz	13.56 MHz 125 kHz	13.56 MHz	13.56 MHz 125 kHz	13.56 MHz 125 kHz	13.56 MHz
Power Consumption (mA) @ 12 VDC Peak / Average	200 mA / 80 mA	100 mA / 70 mA	100 mA / 70 mA	200 mA/ 80 mA	100 mA / 70 mA	100 mA / 70 mA
Weight	110 g (0.24 lbs)	110 g (0.24 lbs)	105 g (0.23 lbs)	175 g (0.4 lbs)	170 g (0.37 lbs)	165 g (0.36 lbs)
Capacitive Touch Keypad with Backlighting	Yes	No	No	Yes	No	No
Typical Read Range 125 kHz ioProx ID-1 Credentials (Cards)	Up to 5.1 cm (2.0 in)		n/a	Up to 6.8 cm (2.7 in)		n/a
Typical Read Range 13.56 MHz MIFARE Plus EV1, encrypted sector, ID-1 Credentials (Cards)	Up to 3.8 cm (1.5 in)			Up to 4.3 cm (1.7 in)		
Mounting	Mullion			Single-Gang (North America / Europe)		
Dimensions (H x W x D)	115.8 x 44.6 x 24.7 mm 4.56 x 1.75 x 0.97 in			115.8 x 71.5 x 24.7 mm 4.56 x 2.81 x 0.97 in		
Supported Credentials 125 kHz	ioProx and HID	n/a	ioProx and HID	n/a		
Supported Credentials 13.56MHz	MIFARE Plus EV1 and ISO/IEC 14443A and 14443B					
Supported Credentials BLE (Bluetooth Low Energy) 2.4 GHz	ioSmart mobile credentials and smart keys					
Wiring Terminal	6 screwless poles					
Tamper	Optical					
Wiegand Communication Formats	Kantech SSF, Kantech XSF, 26-bit, 34-bit					
Sounder	Integrated					
AES-128 Security	From the ioSmart card to the reader. From the reader to the access control unit over RS-485. From the smartphone application to the reader					
Output	RS-485 or BLE panel-less: 1 supervised open-drain, up to 750 mA					
Operating Temperature	Non-UL listed product: -40°C to +70°C (-40°F to +158°F) UL listed product: -35°C to +66°C (-31°F to +151°F)					
Operating Humidity	0 to 95% non-condensing					
LED Indicator	Multi-color bar: Red, Green, Yellow, Blue, Configurable					
Inputs in Wiegand mode	LED and Buzzer					

Inputs in RS-485	2 to 4, configurable
Inputs in BLE panel-less	2 configurable
Input Voltage	8.5 VDC to 16 VDC (provided by UL 294 or UL 603 listed, power limited power source)
Housing	Polycarbonate, smoked black
Flammability Rating	UL94 V-2
Firmware	Fully upgradable using RS-485
Ingress Protection Rating	IP55 (not verified by UL)
Communication	RS-485 (AES 128-bit), Wiegand or BLE (AES 128-bit)
Cabling	3 twisted pairs AWG 22 unshielded or CAT5, up to 150 m (500 ft)
Warranty	Limited Lifetime
Certifications	FCC, IC, CE, UL 294, FIPS 197, RoHS, WEEE. For RS-485, NIST CAVP validation number AES 3667, key length 128
Compatible RS-485 Access Control Units	KT-400 and KT-1 (see ioSmart install manual for cable distances between reader and controller)

Door Controllers

Elegantly simple and cost effective door controllers for access control

Take advantage of the convenience and cost effectiveness of cloud powered access control. Remotely lock and unlock doors from any computer or smart phone. Monitor real-time door activity with integrated video surveillance and intelligent alerts. Manage doors, users and schedules across your entire organization – all from one browser.





KT-1 Ethernet-Ready One-Door Controller

Physical	
KT-1	
Plastic Housing Dimensions (H x W x D)	12.9 x 8.6 x 4.6 cm (5.1 x 3.4 x 1.8 in)
Weight	305 g (10.8 oz)
KT-1-PCB	
Dimensions (H x W x D)	13.8 x 12.1 x 4.8 cm (5.4 x 4.8 x 1.9 in)
Weight	395 g (13.9 oz)
Environmental	
Operating Temperature	2° to 40°C (35° to 104°F)
Operating Humidity	0% to 95% non-condensing
Electrical	
KT-1/KT-1-PCB Power Input	12 VDC / PoE / PoE+, 2.2 A
Reader Power Output	Maximum 0.5 A @ 12 VDC, typical 250mA per reader, protected and supervised
Lock Device Power	12 VDC, typical 750mA supervised (PoE+ & 12vdc power input) & 12 VDC, typical 250mA supervised (PoE)
Operational	
One Button Enrollment	Capacitive touch-sensitive button (EntraPass Security Management Software)
Reader Types	Wiegand, proximity, ABA clock and data, bar code, magnetic, integrated keypad, smart card, RS-485 (Kantech Protocol)
# of Cards when disconnected from EntraPass (Offline Mode)	100,000 (KT-1 and KT-1- PCB)
Monitored Points (Inputs)	4 monitored points, single EOL, double EOL (Independently programmable)
Reader Outputs	LED and buzzer (25 mA maximum each, open collector outputs)
Auxiliary Outputs	OUT3 and OUT4 (25 mA each, open collector outputs)
KT-1 Controlled Output Relay	2 controlled output relays, 12 VDC, 25 mA each, open collector (optional relay KT-RM1 available)
KT-1-PCB Controlled Output Relay (R1, R2)	2 onboard form C controlled outputs relays, 30 VDC, 3 A max each
Communication Ports	RS-485, Ethernet 10/100Base-T with RJ-45
Expansion Port	RS-485
Auxiliary Port	Auxiliary 12 VDC, 500 mA maximum

Communication Speed	Up to 115,200 baud (automatic detection over RS-485); 10/100Base-T over Ethernet
Flash Memory	256 MB for application and data storage (configuration and events can reside for a minimum of 10 years without power)
RAM	128 MB for application loading and running
Network Autonomy	Distributed data and processing
Regulatory	
EN60839-11-1 Grade 1, EN50130-4:2011, AS-NZS, EN55032, EN60950, FCC, UL, UL-294, UL-1076, IC, NMB-003, RCM, CE	
Warranty	5 years

Cloudvue works with a non-proprietary door controller that supports existing door hardware and card readers.

Cloudvue works seamlessly with Kantech KT-1 Controllers. Since Cloudvue and Kantech are both Tyco brands you get a fully integrated experience. KT-1 is an Ethernet-ready single-door controller, supporting two readers – IN/OUT and configurable in two modes providing advanced access control features.

Key Features

- One Door IP Controller - Supports 2 readers (entry and exit)
- Single touch button for fast & automatic controller enrollment
- Plug & Play installation
- Power over Ethernet (PoE) – Flexible power input
- Highly secure 128-bit AES encryption



20 Years of Experience

Sleep well at night. Cloudvue solutions operate worldwide every day and have been delivering versatile and scalable security services for customers from retail, manufacturing and finance to hospitals, restaurants and smart cities since 1999.

From the initial contact with customers to ongoing service and continuing resource development, the Cloudvue Team is committed to your success.

Learn more about Cloudvue's 20 years of cloud video surveillance and security technology innovation at www.Cloudvue.io



In terms of cost-effectiveness, ease of use, and reliability on our low-bandwidth networks, Cloudvue's surveillance solutions are above and beyond anything else on the market. The system is intuitive, easy to navigate, and allows us quickly login and manage HD surveillance from all our commercial properties on one screen. I would recommend Cloudvue to anyone who needs surveillance for multiple, large-scale commercial properties.

– Duane Dietz, Metro Fright Liner

Cloudvue helps reduce shrink and other theft in our chain of retail stores. Most recently, we were able to recover thousands of dollars in stolen inventory and convict another criminal. Cloudvue is an important part of our loss prevention efforts.

– Steve Avery, Ace Hardware

We reviewed several cloud-based video surveillance manufacturers, but we chose Cloudvue. We feel like our campuses, students and faculty are better protected with the Cloudvue solution.

– Dianne Anderson, Ph.D.,
McKenzie Special School District





Discover what Cloudvue can do for you

USA: (888) 754-4543

Worldwide: +1 (615) 988-9766

www.Cloudvue.io

© 2021 Johnson Controls.