



Now Compatible With
amazon alexa



Home Security Gateway Series

Transforming Your Life

HSGW-MAX Home Security Gateway

Secure Your Peace of Mind



The HSGW-MAX is an IP-based multi-functional RF, ZigBee, and Z-Wave smart home security gateway with optional add-on of Wi-Fi or 3G/LTE capabilities. The system supports VoLTE (voice over LTE), offering better quality of voice communication and calling experience. The gateway provides comprehensive solutions, including remote management, home security, live visual monitoring, home automation, energy management and emergency monitoring, designed to bring all-around convenience, comfort and safety.

Multiple
Communication Paths



Easy Management

Multiple Communication Paths

- 3G/LTE, IP (Ethernet), or WiFi Communication Paths
- Supports Voice Over LTE (VoLTE)
- Supports RF, ZigBee, or Z-Wave devices
- Optional expansion via USB dongle

Remote Management

- 160 zones
- Smartphone App (iOS & Android) and Web browser

Smart Home Services

Climax's HSGW-MAX Series provides comprehensive smart home services, including remote control, home security, live visual monitoring, home automation, energy management and emergency monitoring.



Smart Home
Services



World-Leading
2-Km RF Range

World-Leading 2-Km RF Range

The HSGW-MAX adopts Climax's groundbreaking Security@2km Wireless Technology that delivers RF communication range of 2 kilometers (1.5 miles), fast signal transmission, and relentless reliability.

Home Security

The Best Safety Lies in Smart Living



Live Visual Monitoring

The HSGW-MAX can be compatible with IP cameras and PIR cameras/PIR video cameras for visual verification and real-time monitoring. PIR Motion Cameras/IP Cameras captures images and record video clips when unauthorized motions are detected and sent to users and monitoring centers for immediate action.



Alarm Reporting

The IP-based HSGW-MAX can send alarm reporting in multiple formats, including alarm events in CID/SIA, SMS, Email, Push reporting via 3G/LTE/IP, and send videos and images over Email via IP.

Built-in Siren

The HSGW-MAX features a loud built-in siren to blare out immediate warning when emergencies occur. It can also incorporate additional indoor and outdoor sirens to establish a powerful early warning system.

Backup Battery

The HSGW-MAX have rechargeable battery backup, which means that the gateways will keep working even when the power is out, or if it was purposefully sabotaged. When it comes to your security system, there is no room for error.



VST-1818 R3
IP Camera



VST-892
Camera PIR
Motion Detector



EIR-32
Outdoor Pet-Immune
PIR Motion Detector

The VST-1818 R3 IP camera, the VST-892 Camera PIR detector, and the EIR-32 outdoor pet-immune PIR motion detector deliver live video and alarm videos/images for visual verification.

Home Automation

Greater Comfort and Convenience



SCM-5 & SCS-1
Shutter Controller & Switch



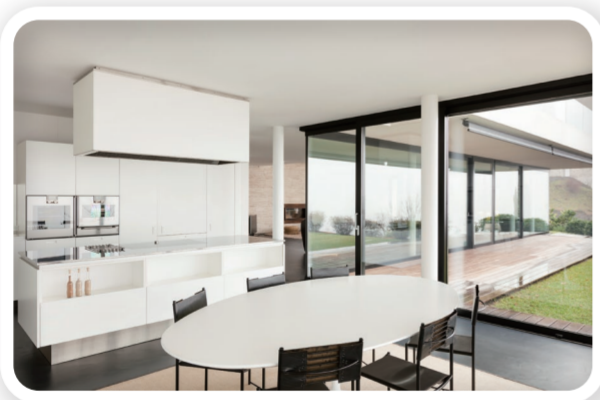
WSS-4E
4-Scenario Switch



TMST-2ZW
Thermostat



AQS-1
Air Quality Sensor



Home Automation

The HSGW-MAX incorporates ZigBee and/or Z-Wave accessories to automate your home and enhance your life quality. You can easily tailor the HSGW-MAX's services to meet your family's needs anytime, anywhere via smartphone app and web browser.

The HSGW-MAX automates lights and appliances



Temperature Settings



Custom Scenes & Schedules



Security Status



Group/Zone Settings

- *One button press to execute movie mode scene to turn on TV, dim the lights, and close the shades*
- *Set your lawn sprinklers on a weekly schedule*
- *Set living room lights on at different intervals to appear the house is occupied even when it's not*



Energy Management

Live Greener with Lower Costs



Emergency Monitoring

Protect Your Home from Fire, Flooding and Air Toxins



PSM-29ZBS
Power Meter
Switch



EMD-1ZW
Energy
Meter



PRM5-ZBS
Power Meter &
Relay Switch



POVS-1ZBS
PIR Occupancy/
Vacancy Sensor

Energy Management

The HSGW-MAX can integrate whole-house energy meters to report how much electricity the entire household uses and ZigBee/Z-Wave power meter switches to monitor the power consumption of individual home appliances. With this power-saving system you can develop a useful strategy to reduce energy consumption.

24-Hour Emergency Monitoring

The HSGW-MAX can incorporate smoke/heat detectors, water sensors, air quality sensors, panic buttons, light and humidity sensors to protect user's family and property from damage cause by fire, heat, water, or air toxins. This round the clock monitoring ensures comprehensive prevention of disasters and quick response during emergencies.



SD-29
Smoke Detector
with motion,
temperature
sensor &
Emergency light



Mini-SD
Mini Smoke &
Heat Detector



SDCO-1
Carbon Monoxide
Detector



WLS-23
Water Leakage
Sensor

Be in Control Wherever You Are



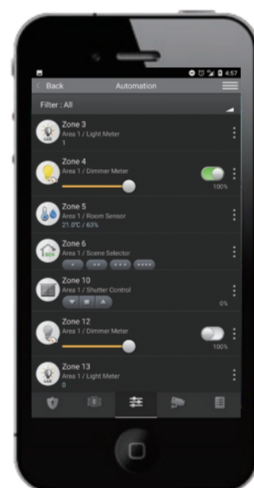
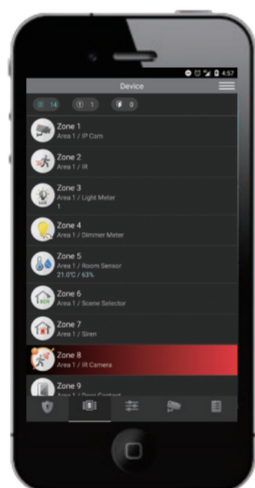
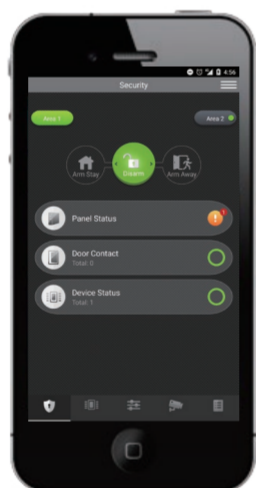
Remote and Mobile Control

Vesta Home App

The end user can download the Vesta Home App from the App Store or the Google Play Store to manage the HSGW-MAX, receive event reports and view alarm videos/images on a smartphone.

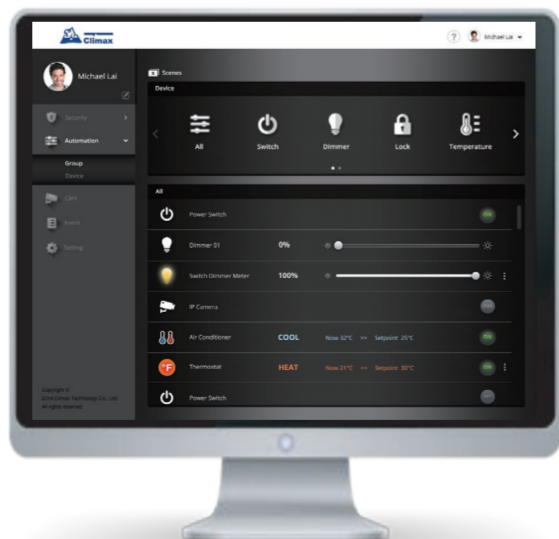
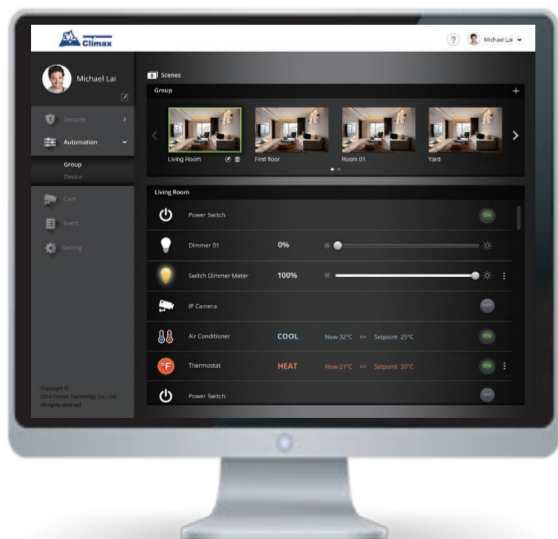
Available on the
App Store

ANDROID APP ON
Google play



Home Portal Server

Home Portal Server, Climax's high-capacity IP/GPRS platform, enables the CMS to remotely manage the HSGW-MAX and serve customers.



The HSGW-MAX Series Comparison



	HSGW-MAX1	HSGW-MAX3	HSGW-MAX5	HSGW-MAX8	HSGW-MAX15
Communication Path	IP (Ethernet) and/or WiFi				
Built-in Module	RF, ZigBee, or Z-Wave	RF and ZigBee or Z-Wave	ZigBee and Z-Wave	3G/LTE, RF, and ZigBee or Z-Wave	RF, ZigBee, and Z-Wave
Optional Expansion Via USB Dongle	WiFi, Z-Wave or 3G/LTE (requires 6B battery pack)				
Wireless Zones	160 zones				
Reporting Method	CID/SIA, Email, SMS, Push Notification				
Programming Method	Web and App				
Features					
Live Visual Verification	✓	✓	✓	✓	✓
Advance Home Automation	✓	✓	✓	✓	✓
Energy Management	✓	✓	✓	✓	✓
24/7 Emergency Monitoring	✓	✓	✓	✓	✓
VoLTE		✓		✓	
Remote Management Via Mobile App & Web	✓	✓	✓	✓	✓
RF Devices Support	✓	✓		✓	✓
Built-in Siren	✓	✓	✓	✓	✓
Specifications					
ZigBee Protocol	ZigBee Pro HA 1.2, 2.4GHz				
Z-Wave Protocol	Z-Wave Plus 500 Series, 868.40MHz (EU) / 908.40MHz (US)				
RF Frequencies	433MHz / 868MHz				
3G Frequencies	EU: B1 (2100 MHz) / B5 (850 MHz) / B8 (900 MHz) US: B2 (1900 MHz) / B4 (1700MHz) / B5 (850 MHz)				
LTE Frequencies	EU: B1 (2100 MHz) / B3 (1800 MHz) / B5 (850 MHz) / B7 (2600 MHz) / B8 (900 MHz) / B20 (800 MHz) US: B2 (1900 MHz) / B4 (1700MHz) / B12 (700MHz)				
Optional Add-on (HSGW-MAX8)	External antenna (MMCX connector)				
WiFi Module	802.11 b/g/n				
Power Supply	12V, 1A				
Backup Battery	7.2V, 600mAh, Ni-mH rechargeable battery pack (for 3G/LTE option); or 7.2V, 1100mAh Ni-mH rechargeable battery pack (for 3G/LTE option)				
Backup Battery Life	14hrs* (600mAh), or 28hrs* (1100mAh)				

Operating Temperature	-10°C to 45°C (14°F to 113°F)
Operating Humidity	Up to 85% non-condensing
Dimensions	150 mm x 140 mm x 42 mm

* Note: The actual battery life may vary with product settings, usage patterns and operating environment.

Ordering Information

HSGW-MAX1-F1 433/868	IP Gateway with built-in RF module
HSGW-MAX1-F1 433/868-WIFI	IP Gateway with built-in RF and WIFI connections
HSGW-MAX1-ZBS	IP Gateway with built-in ZigBee module
HSGW-MAX1-ZBS-WIFI	IP Gateway with built-in ZigBee and WIFI connections
HSGW-MAX1-ZW	IP Gateway with built-in Z-Wave module
HSGW-MAX1-ZW-WIFI	IP Gateway with built-in Z-Wave and WIFI connections
HSGW-MAX3-F1 433/868-ZBS	IP Gateway with built-in RF and ZigBee module
HSGW-MAX3-F1 433/868-ZBS-WIFI	IP Gateway with built-in RF, ZigBee module and WiFi connections
HSGW-MAX3-F1 433/868-ZW	IP Gateway with built-in RF, and Z-Wave module
HSGW-MAX3-F1 433/868-ZW-WIFI	IP Gateway with built-in RF, Z-Wave module and WiFi connections
HSGW-MAX5-ZBS-ZW	IP Gateway with built-in ZigBee, and Z-Wave module
HSGW-MAX5-ZBS-ZW-WIFI	IP Gateway with built-in ZigBee, Z-Wave module, and WiFi connections
HSGW-MAX8-3G/LTE-ZBS-F1 433/868	IP Gateway with built-in RF, 3G/LTE, and ZigBee module
HSGW-MAX8-EX-3G/LTE-ZBS-F1 433/868	IP Gateway with built-in RF, 3G/LTE, and ZigBee module, external antenna supported (antenna not included)
HSGW-MAX8-3G/LTE-ZW-F1 433/868	IP Gateway with built-in RF, 3G/LTE, and Z-Wave module
HSGW-MAX8-EX-3G/LTE-ZW-F1 433/868	IP Gateway with built-in RF, 3G/LTE, and Z-Wave module, external antenna supported (antenna not included)
HSGW-MAX15-ZBS-ZW-F1 433/868	IP Gateway with built-in RF, ZigBee, and Z-Wave modules
HSGW-MAX15-ZBS-ZW-F1 433/868-WIFI	IP Gateway with built-in RF, ZigBee, Z-Wave modules and WiFi connections