

CV64X0 - Fingerprint / Smart card Read / Write Desktop Reader

CV64X0-X is multifunction fingerprint desktop reader, it's a perfect device to support combination of biometric and contactless smart card technology such as ISO15693, ISO14443A/B. It's easy to use via USB interface communicated with PC. TCP/IP network version is available as option. It can be placed on metal surface.

The desktop reader can be used for fingerprint and smart card application, such as smart card issuing and programming, collecting and verifying fingerprint, personal identification or e-payment etc.

Development Kit including API, DLL or source code is provided to embed into existing system, and compatible to Comprehensive Operation System as WinCE, Windows and Linux.

It can be used for issuing and programming card in Access Control System Solution, like CV8600, CV8460, CV9600 series.

➤ The family member are:

- [CV6410-X](#) Fingerprint + ISO15693, ISO14443A and ISO14443B
- [CV6420-X](#) Fingerprint + ISO14443A and ISO14443B
- [CV6460-X](#) Fingerprint + ISO14443A, MIFARE®
- [CV6400-X](#) Fingerprint

Advantages

- ✚ Multifunction: fingerprint, fingerprint + smart card technology
- ✚ Supporting multi block transfer
- ✚ Built-in memory to enhance security in transaction
- ✚ CVReader Finger SDK, CVReader DES & Finger SDK is available for customer's further application development
- ✚ Professional card programming software, CVReader Card Programmer is provided for programming fingerprint, card ID, increment/decrement for MIFARE® Classic 1K, 4K Secure Sector and read/write application file of MIFARE® DESFire® card
- ✚ Support high security Encryption MIFARE Plus®, MIFARE® DESFire® EV1 (DES/3DES, 3k3DES, AES) through CVReader DES & Finger SDK, collect and verify fingerprint, etc.
- ✚ Built-in anti-collision (at least one card is detected when several cards are presented)
- ✚ Selective card polling capability (useful when several cards are presented)
- ✚ Auto answer mode: permanent reading and sending the ID number
- ✚ Excellent and compact design, can be placed on metal surface
- ✚ Auto PPS (PICC)
- ✚ High speed transaction

Application

- ✚ Personal Identification
- ✚ E-payment
- ✚ Electronic ticketing for public transportation
- ✚ Encoding,
- ✚ Time attendance
- ✚ Physical access control
- ✚ Logical access control
- ✚ Toll collection and parking
- ✚ Vending machines
- ✚ Loyalty

Order code

CV64X0-X

Interface

U - USB

T - TCP/IP (optional)

Technology

6410 - Fingerprint, ISO15693, ISO14443A/B

6420 - Fingerprint, ISO14443A/B

6460 - Fingerprint, ISO14443A, Mifare

6400 - Fingerprint

Product Images



CV64X0-X
129x68x33mm

Specifications

Model	CV6410-X	CV6420-X	CV6460-X	CV6400-X
Technology	Fingerprint + Smart Card, ISO15693, ISO14443A/B	Fingerprint + Smart Card, ISO14443A/B	Fingerprint + Smart Card, ISO14443A Mifare	Fingerprint
Contactless Card Interface	ISO15693, TagIt, I-Code, MY-D, I-Code, MIFARE® Standard, MIFARE Ultralight®, MIFARE® Classic 4k, MIFARE® Pro(X), MIFARE® DESFire®, SLE 55Rxx, SLE66CL160S, MIFARE® DESFire® EV1, MIFARE Plus®, JCOP, Other ISO14443A/B Compatible cards	MIFARE® Standard, MIFARE Ultralight®, MIFARE® Classic 4k, MIFARE® Pro(X), MIFARE® DESFire®, SLE 55Rxx, SLE66CL160S, MIFARE® DESFire® EV1, MIFARE Plus®, JCOP, Other ISO14443A/B compatible cards	MIFARE® Standard, MIFARE Ultralight®, MIFARE® Classic 4k, MIFARE® Pro/Prox, MIFARE® DESFire®, SLE 55Rxx, SLE66CL160S, MIFARE® DESFire® EV1, MIFARE Plus®, JCOP, Other ISO14443A compatible cards	N/A
Operation Frequency	13.56MHz			
Current Consumption	<100 mA			
Communication Rate	424Kbit/s			
Interface	USB, TCP/IP available as option (external converter module)			
Indicators	Three LEDs, one buzzer			
Communication Cable	1.5 meter long USB communication cable			
Power Supply	Power supplied from USB			
Fingerprint Feature	Sensor	UPEK		
	Resolution	508 dpi		
	Match time	<300ms		
	Template size	<512 bytes		
	FAR / FRR	0.000233 / 0.000217		
	ESD tolerance	IEC61000 ±12kV air discharge		
Reading Distance	Typical 60mm (depending on transponders)			
Operating System	Windows 98/2000/XP/7/8; Vista; Server2003&2008, ME98; Linux; WinCE 6.0 above / CE.net			
Operating Temperature	0°C ~ +65°C / +32°F ~ +149°F			
Operating Humidity	0 ~ 95% relative humidity non-condensing			
Special Feature	Easy update design. The Customized firmware could be implemented to meet the user's special requirement.			

Specifications are subject to change without notice.

Software Development Kit

SDK is available with some special benefits for customers' further development.

Features

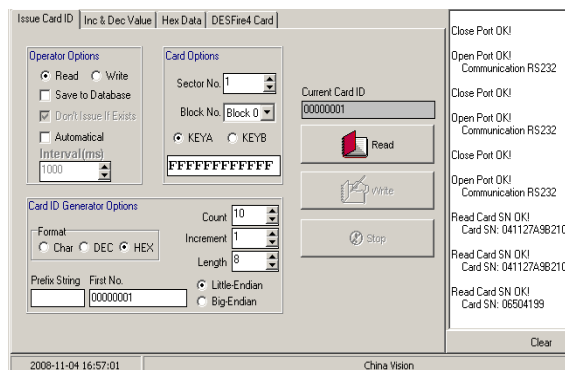
- SDK includes API, Host Demo, user manual, USB driver and program example. It's developed by C++-builder developing tool, compatible to VC, VB/VB.NET, JAVA, C++, C#.NET, DELPHI etc.
- Stronger and powerful informative API to save your time and cost for development (See "CVReader API reference directory" in Appendix for details)
- Examples for good reference and understanding, using developing tools like Delphi, C++ Builder, C#.NET, VC,VB/VB.NET etc.
- Offer special Host Demo and API for Mifare Plus, DESFire EV1 to collect and verify fingerprint, etc.
- Comprehensive platform to provide flexibility by customer side:
Operating System: Linux and Windows. Support Win 98, Win ME, Win 2000, Win 2003, Win 2003 x64, Win XP, Win XP x64, Win Vista, Win Vista x64, Win 2008, Win 2008 x64, Win 2008 R2 x64, Win 7, Win 7 x64, Win8
- Provide DLL compatible to Win CE 6.0 above
- Host Demo, a software testing tool to ease and simply development
- One SDK for all our readers (CV3XXX, CV5XXX, CV6XXX) to avoid development cost for product upgrade

Software

Professional card programming software,

CVReader Card Programmer is provided for programming card ID, increment/decrement for MIFARE® Classic 1K, 4K, read/write MIFARE® DESFire® card.

- Programming card ID for Mifare Secure Sector of MIFARE® Classic 1K, 4K, batching card programming is available for fast programming
- Inc&Dec Value for Mifare Secure Sector of MIFARE® Classic 1K, 4K, batching card programming is available for fast process
- Read/write Mifare Plus, and application file of MIFARE® DESFire® EV1 card, 28 applications and 16 files can be created for high security
- Collect and Verify Fingerprint



CVReader Card Programmer