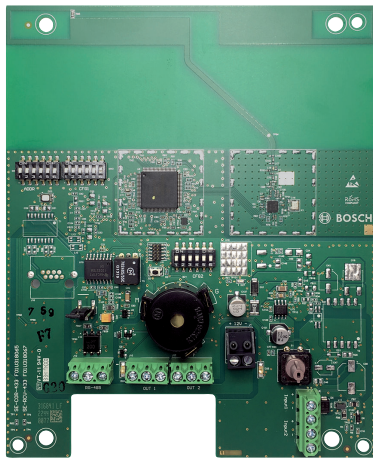


SE-RCV-433 Receiver, 433MHz w/o encl.

www.boschsecurity.com



BOSCH
Invented for life



- ▶ Fixed frequency of 433.42 MHz
- ▶ Wired (RS-485) to coordinator
- ▶ Wireless communication between receiver and transmitter
- ▶ Built-in 2 inputs and 2 relay outputs
- ▶ Remote firmware upgradable via wired RS-485

Use the Security Escort receiver throughout a protected area, including building interiors. It relays transmitter alarm and test information by wire (RS-485) to the coordinator.

System overview

During an alarm, the Security Escort receiver detects an alarm signal from a transmitter (signal strength measured in 255 steps), and sends the signal to the coordinator. The coordinator forwards this information from all the receivers that detected the signal to the central console software. The central console software shows the location of the transmission on the alarm map.

Functions

Indoor Enclosure

Receivers with AE100 Indoor Enclosures have 1 red and 1 green light emitting diode (LED). Green light indicates a successful transmitter test. Red light indicates alarms or specific system tests are in progress. The AE100 Indoor Enclosures are vandal resistant and sound locally during alarms.

Outdoor Enclosure

Receivers with AE101 Outdoor Enclosures indicate a successful transmitter test through the device connected to the receivers output relay. The AE101 Outdoor Enclosures are weather-resistant.

Buddy Check

Each receiver contains a transmitter that is functionally similar to the hand-held transmitters. The central console software can command this transmitter to send a test message to other nearby receivers.

The central console software issues this command, called buddy check, at regular intervals to verify that the receivers function correctly. The central console software compares the results of the buddy check with previous buddy checks, and stores information about sensitivity changes in the system database.

Sounder

Each receiver contains an internal self-contained 85 dB sounder. The sounder of the receiver that is closest to the alarm will be activated.

Certifications and approvals

Region	Regulatory compliance/quality marks	
Australia	RCM	
Europe	CE	EN 55032:2015, EN 61000-6-3:2007 +A1:2011, EN 61000-3-2:2014, EN 61000-3-3:2013, EN 55024:2010 +A1:2015, EN 61000-6-1:2007, ETSI EN 301 489-1 V2.1.1, Final Draft ETSI EN 301 489-3 V2.1.1, ETSI EN 300 220-1 V3.1.1, ETSI EN 300 220-2 V3.1.1, EN 62479:2010, EN 62368:2014
USA	FCC	
Canada	IC	
Singapore	IMDA	

Installation/configuration notes

Installation Information

When estimating the number of receivers for an installation, apply the following criteria:

- **Indoor Receivers:** Assume a spacing of no more than 24 m (80 ft) between receivers for standard construction. In multi-floor applications, the receivers on each floor must be placed directly above the receivers on the floor below them.
- **Outdoor Receivers:** Assume a receiver spacing of no more than 91 m (300 ft) between receivers.

Mounting Considerations

You will need a Security Hex Driver to mount the receiver.

- **Indoor Enclosure:** Mount on inside walls.
- **Outdoor Enclosure:** Mount on the sides of buildings and on light posts.

Compatibility Information

Central Console Software	SE3000 Series
Security Escort coordinator	SE-COR-433
Security Escort transmitter *	SE-TRM-433T01

* Refer to Bosch website for the updated list of supported transmitters.

Parts included

Quantity	Component
1	Security Escort Receiver
1	Security Escort Coordinator & Receiver Installation Manual
4	2.2 kΩ Axial Lead Resistors

Technical specifications

Transmission

Transmission Frequency:	433.42 MHz
Trouble Output:	Signal sent through the central console

Antenna Type:	Internal
Sensitivity Adjustments:	-100 dB minimum

Electrical

Power Consumption:	1.8 VA (max)
Primary Power Source:	24 VDC in

Environmental

Operating Temperature:	-30°C to +65°C (-22°F to +149°F)
------------------------	-------------------------------------

Hardware

Input:	2 analog inputs (4 state supervised monitoring)
Output:	2 relay outputs (Relay dry contact, 1A @ 30 VDC)
Communication Interface:	RS-485
Housing Tamper:	Normally closed (NC)

Reliability

Mean Time Between Failures (MTBF):	10 years
------------------------------------	----------

Ordering information

SE-RCV-433 Receiver, 433MHz w/o encl.

Detects the radio transmissions from transmitters (w/o enclosure). Receives alarm information and relays it to the coordinator. Frequency is 433.42 MHz. Order number **SE-RCV-433**

Accessories

AE_100 Indoor enclosure kit

The AE100 Indoor Enclosure is for indoor installations and is vandal resistant. Order number **AE_100**

AE_101 Outdoor enclosure kit

The AE101 Outdoor Enclosure is for outdoor installations and is weather resistant. Order number **AE_101**

Represented by:

Europe, Middle East, Africa:
Bosch Security Systems B.V.
P.O. Box 80002
5600 JB Eindhoven, The Netherlands
Phone: + 31 40 2577 284
emea.securitysystems@bosch.com
emea.boschsecurity.com

Germany:
Bosch Sicherheitssysteme GmbH
Robert-Bosch-Ring 5
85630 Grasbrunn
Germany
www.boschsecurity.com

North America:
Bosch Security Systems, Inc.
130 Perinton Parkway
Fairport, New York, 14450, USA
Phone: +1 800 289 0096
Fax: +1 585 223 9180
onlinehelp@us.bosch.com
www.boschsecurity.us

Asia-Pacific:
Robert Bosch (SEA) Pte Ltd, Security Systems
11 Bishan Street 21
Singapore 573943
Phone: +65 6571 2808
Fax: +65 6571 2699
apr.securitysystems@bosch.com
www.boschsecurity.asia